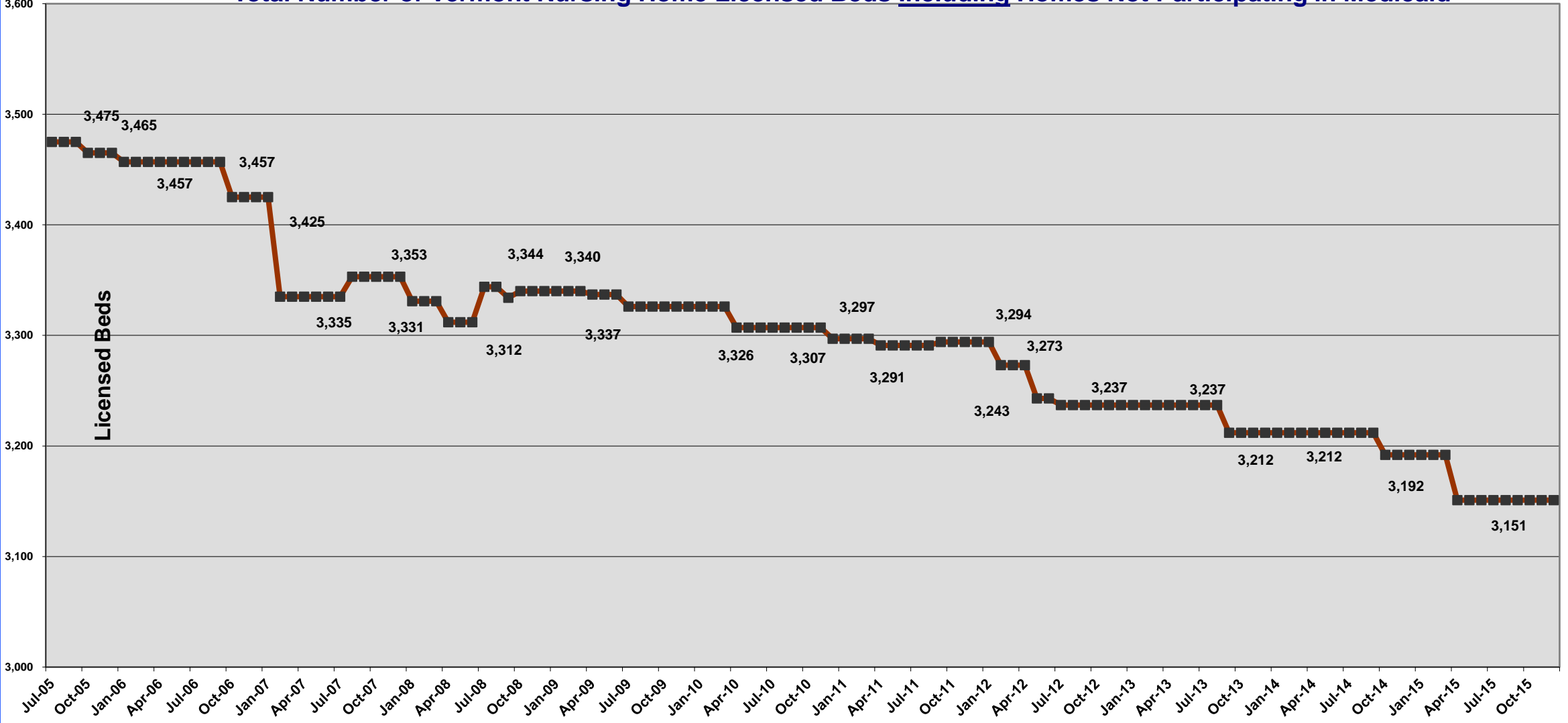
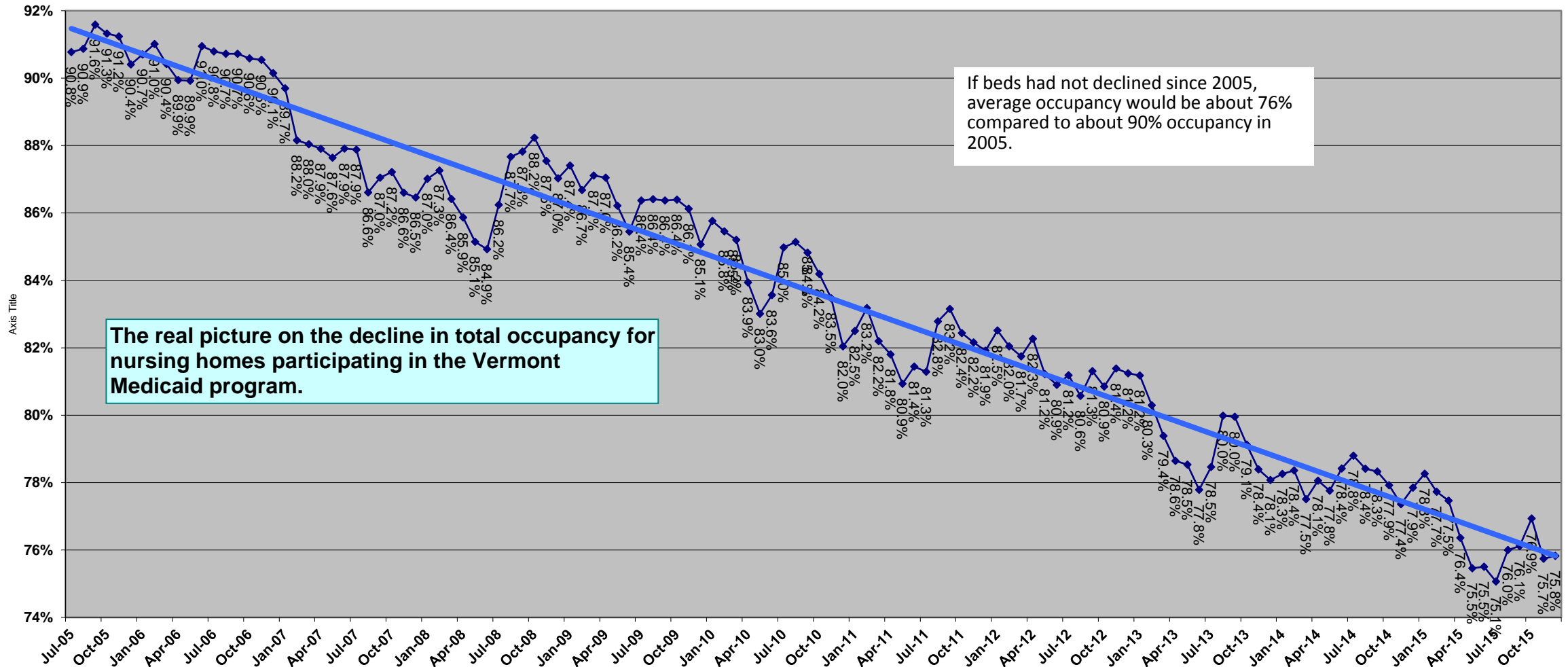


Total Number of Vermont Nursing Home Licensed Beds Including Homes Not Participating in Medicaid

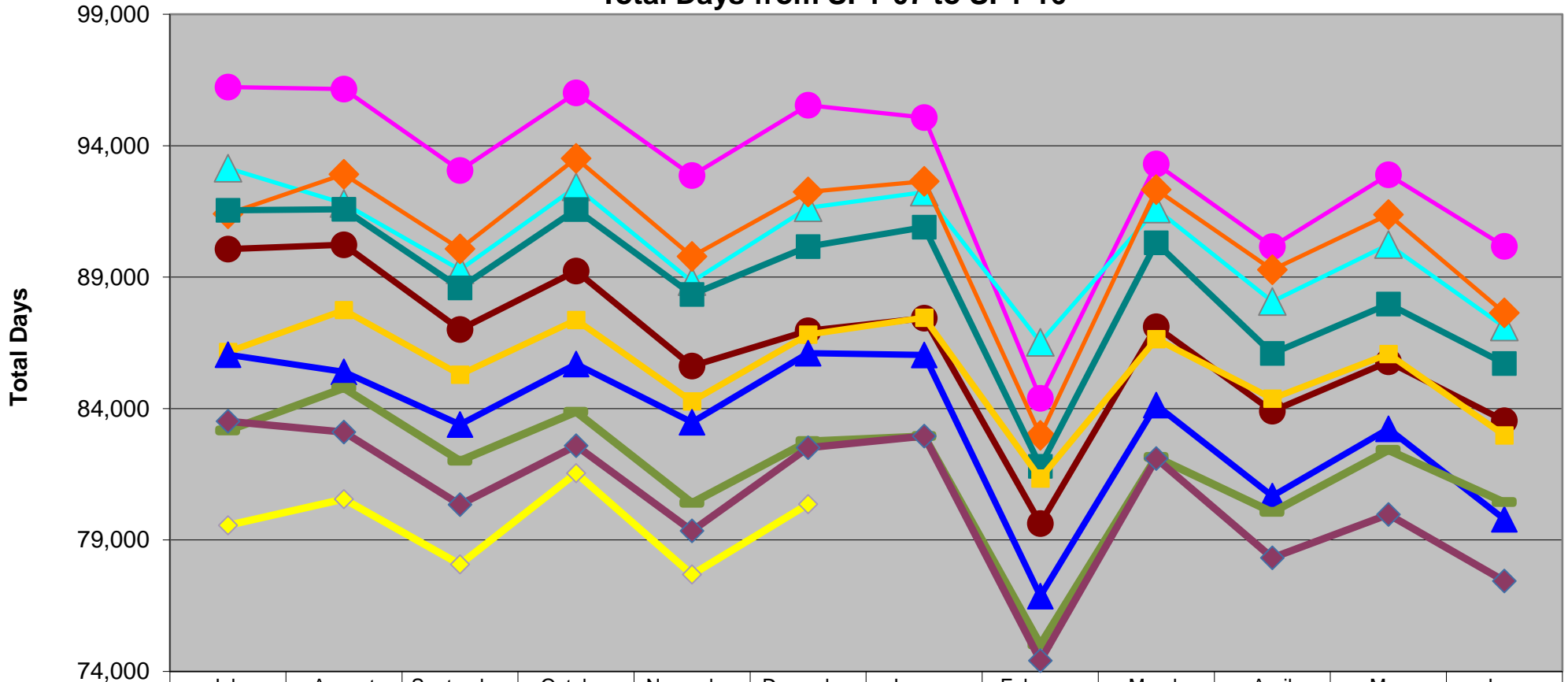


**Absolute Decrease in Total Occupancy - Unaffected by Decline in Beds
With Occupancy Calculated as if Number of Beds Held Steady at 3,419 from July 1, 2005 to Present**

(Occupancy Percentages Based on a Changing Number of Beds Are Not Comparable)



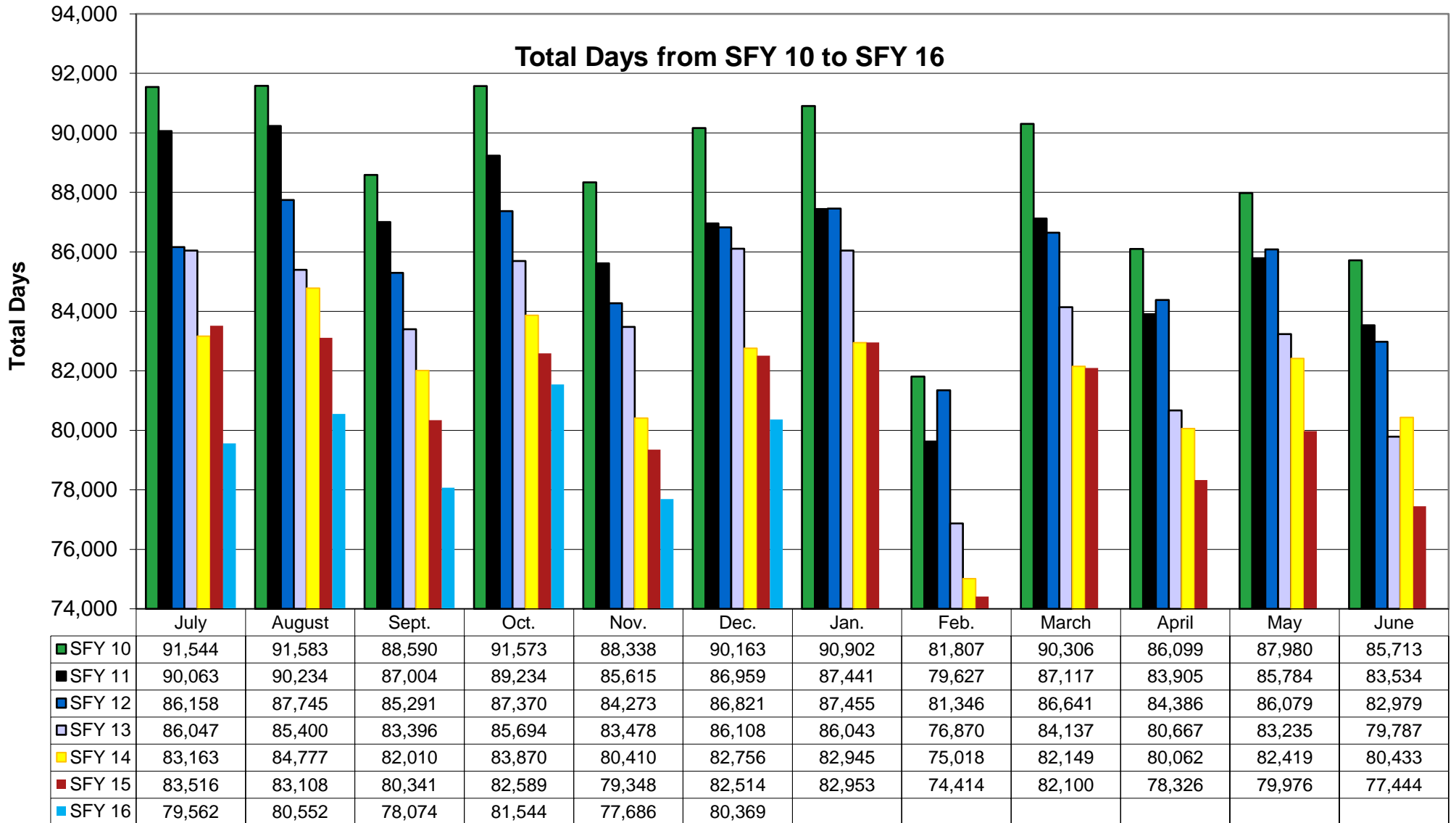
Total Days from SFY 07 to SFY 16



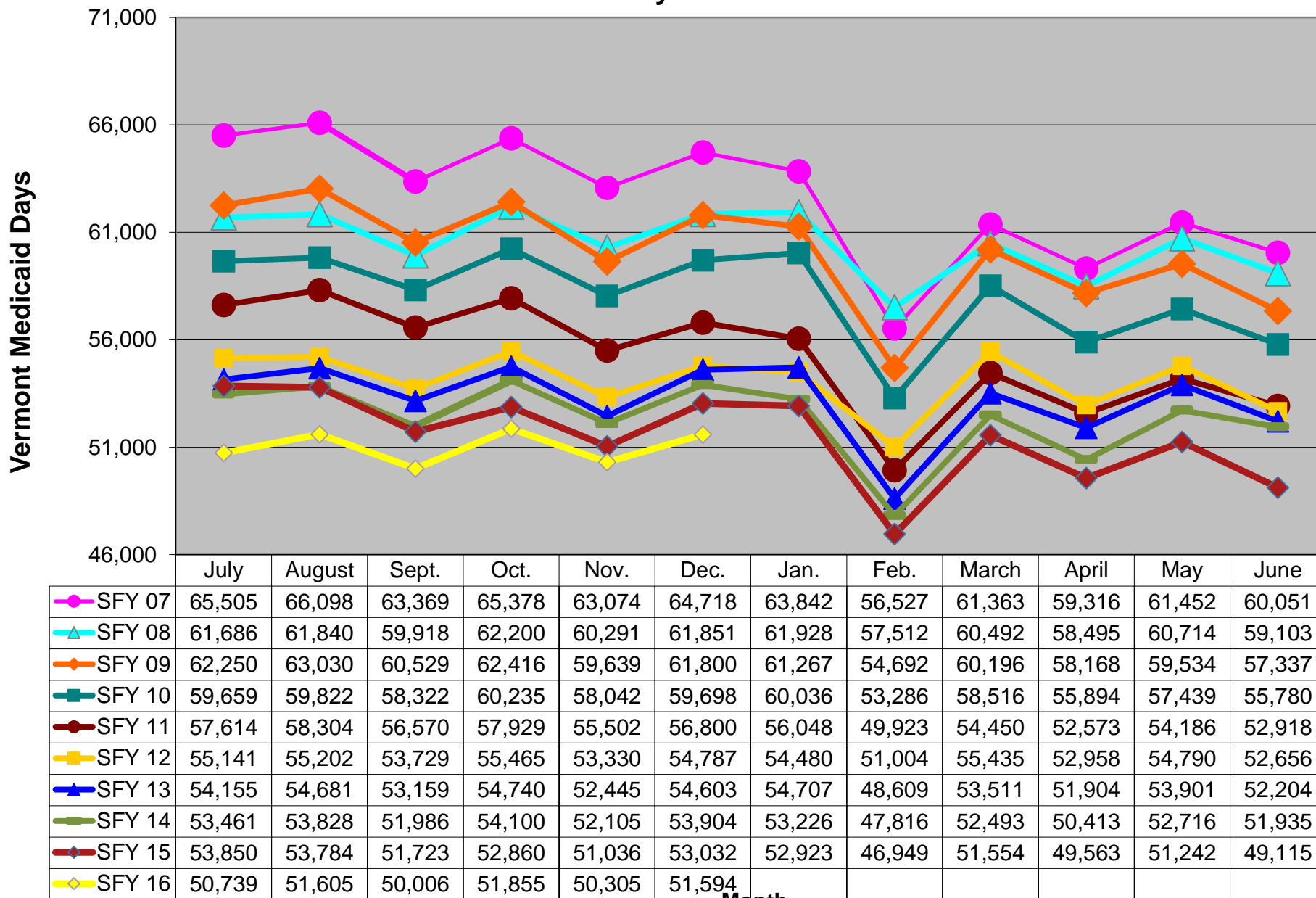
	July	August	September	October	November	December	January	February	March	April	May	June
SFY 07	96,231	96,153	93,055	96,011	92,867	95,545	95,072	84,392	93,311	90,162	92,890	90,169
SFY 08	93,145	91,798	89,282	92,439	88,830	91,636	92,229	86,521	91,591	88,072	90,243	87,106
SFY 09	91,408	92,915	90,077	93,520	89,793	92,241	92,641	82,979	92,327	89,282	91,380	87,641
SFY 10	91,544	91,583	88,590	91,573	88,338	90,163	90,902	81,807	90,306	86,099	87,980	85,713
SFY 11	90,063	90,234	87,004	89,234	85,615	86,959	87,441	79,627	87,117	83,905	85,784	83,534
SFY 12	86,158	87,745	85,291	87,370	84,273	86,821	87,455	81,346	86,641	84,386	86,079	82,979
SFY 13	86,047	85,400	83,396	85,694	83,478	86,108	86,043	76,870	84,137	80,667	83,235	79,787
SFY 14	83,163	84,777	82,010	83,870	80,410	82,756	82,945	75,018	82,149	80,062	82,419	80,433
SFY 15	83,516	83,108	80,341	82,589	79,348	82,514	82,953	74,414	82,100	78,326	79,976	77,444
SFY 16	79,562	80,552	78,074	81,544	77,686	80,369						

Month

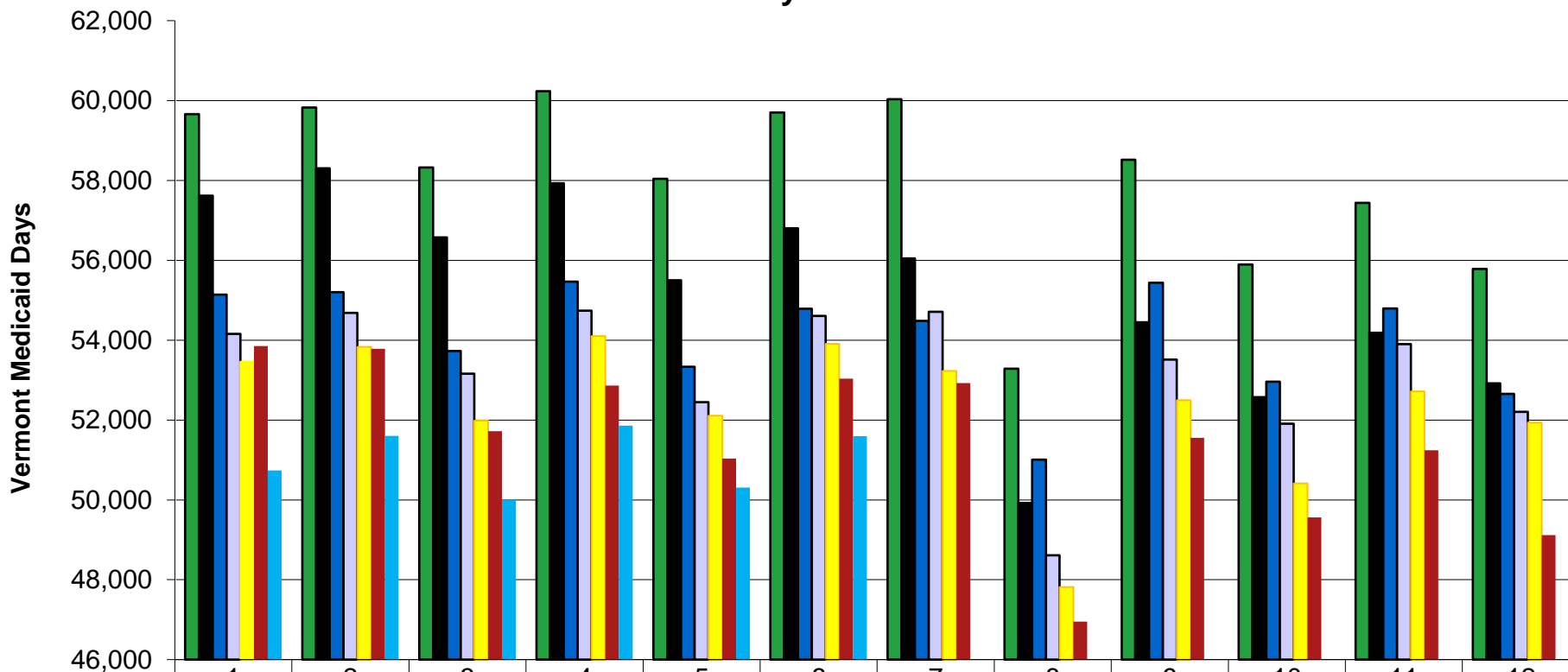
Total Days from SFY 10 to SFY 16



Vermont Medicaid Days from SFY 07 to SFY 16



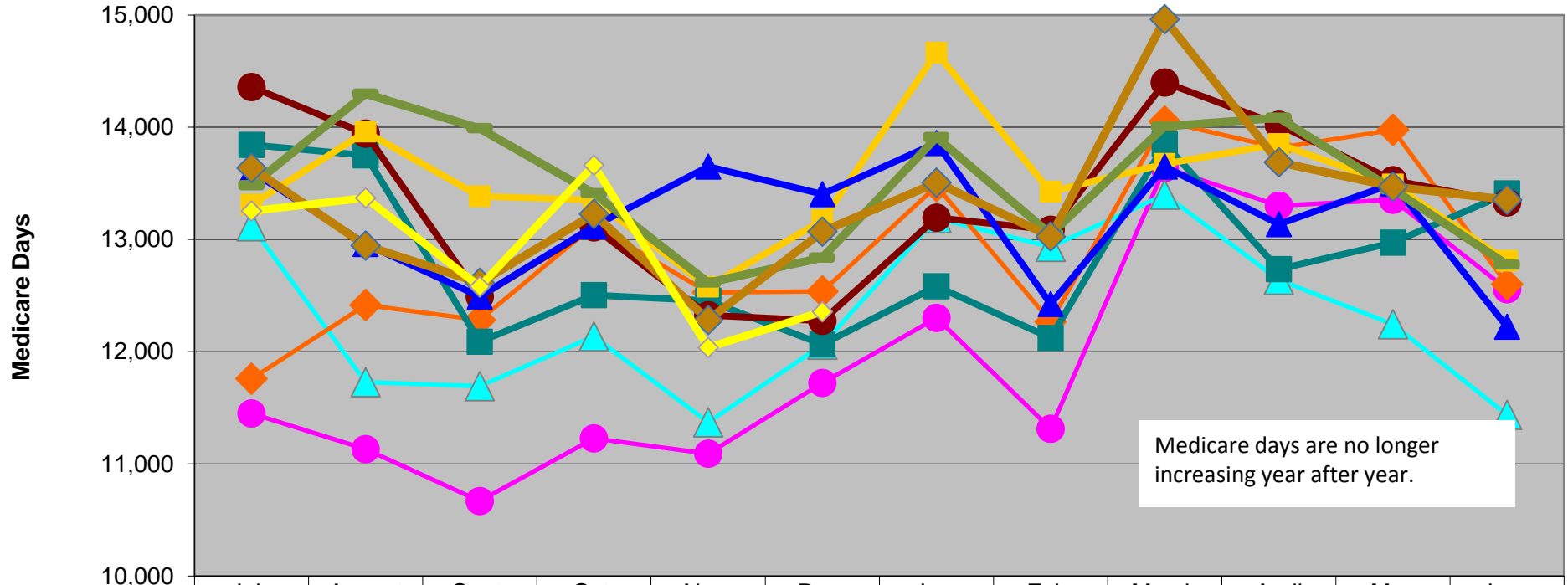
Vermont Medicaid Days from SFY 10 to SFY 16



	1	2	3	4	5	6	7	8	9	10	11	12
■ SFY 10	59,659	59,822	58,322	60,235	58,042	59,698	60,036	53,286	58,516	55,894	57,439	55,780
■ SFY 11	57,614	58,304	56,570	57,929	55,502	56,800	56,048	49,923	54,450	52,573	54,186	52,918
■ SFY 12	55,141	55,202	53,729	55,465	53,330	54,787	54,480	51,004	55,435	52,958	54,790	52,656
■ SFY 13	54,155	54,681	53,159	54,740	52,445	54,603	54,707	48,609	53,511	51,904	53,901	52,204
■ SFY 14	53,461	53,828	51,986	54,100	52,105	53,904	53,226	47,816	52,493	50,413	52,716	51,935
■ SFY 15	53,850	53,784	51,723	52,860	51,036	53,032	52,923	46,949	51,554	49,563	51,242	49,115
■ SFY 16	50,739	51,605	50,006	51,855	50,305	51,594						

Month

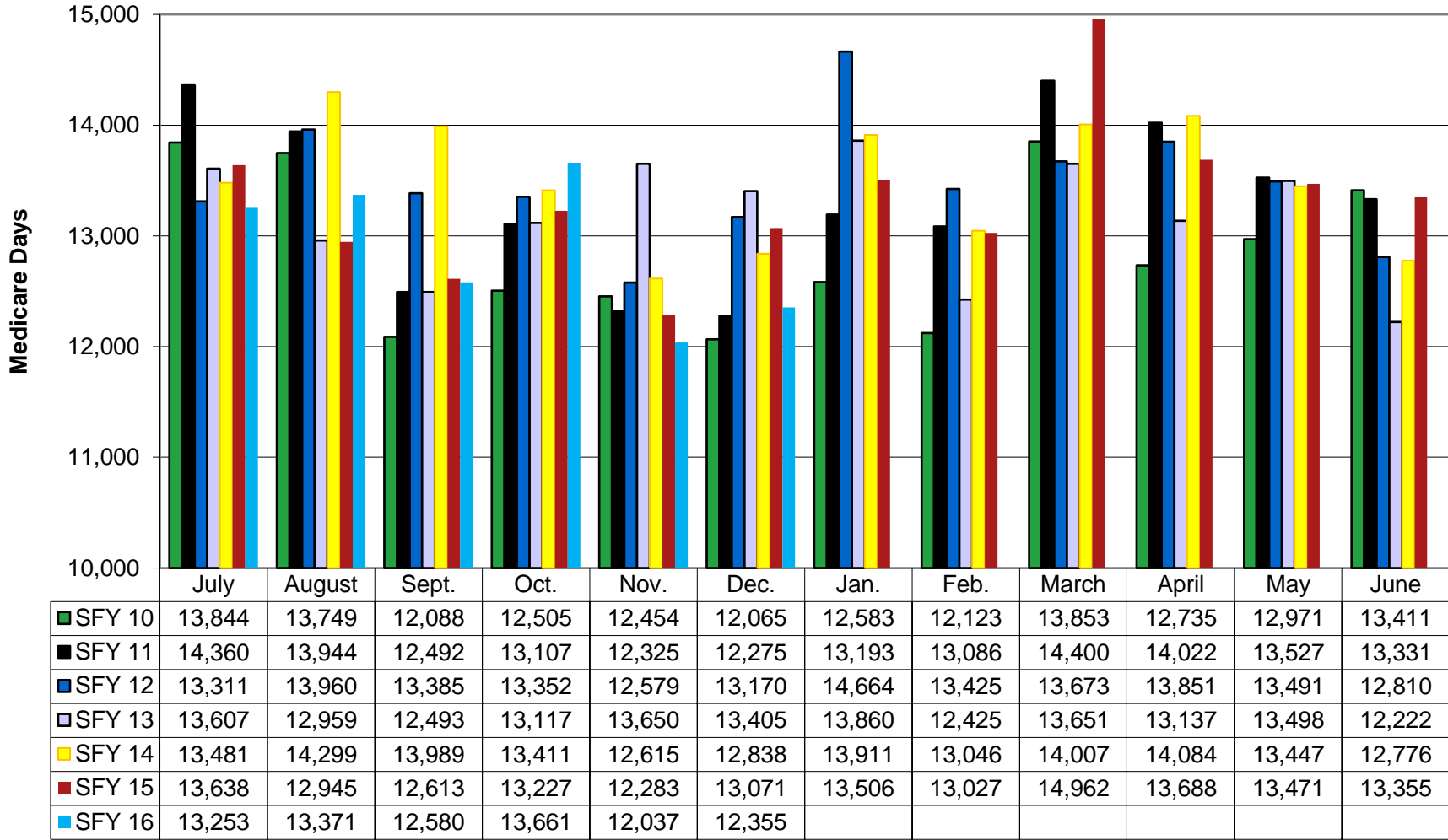
Medicare Days from SFY 07 to SFY 16



	July	August	Sept.	Oct.	Nov.	Dec.	Jan.	Feb.	March	April	May	June
● SFY 07	11,449	11,132	10,669	11,227	11,091	11,722	12,301	11,314	13,638	13,302	13,353	12,557
▲ SFY 08	13,117	11,728	11,693	12,136	11,370	12,062	13,190	12,934	13,400	12,641	12,245	11,436
◆ SFY 09	11,759	12,415	12,282	13,126	12,528	12,537	13,476	12,268	14,052	13,817	13,976	12,602
■ SFY 10	13,844	13,749	12,088	12,505	12,454	12,065	12,583	12,123	13,853	12,735	12,971	13,411
● SFY 11	14,360	13,944	12,492	13,107	12,325	12,275	13,193	13,086	14,400	14,022	13,527	13,331
■ SFY 12	13,311	13,960	13,385	13,352	12,579	13,170	14,664	13,425	13,673	13,851	13,491	12,810
▲ SFY 13	13,607	12,959	12,493	13,117	13,650	13,405	13,860	12,425	13,651	13,137	13,498	12,222
■ SFY 14	13,481	14,299	13,989	13,411	12,615	12,838	13,911	13,046	14,007	14,084	13,447	12,776
◆ SFY 15	13,638	12,945	12,613	13,227	12,283	13,071	13,506	13,027	14,962	13,688	13,471	13,355
◆ SFY 16	13,253	13,371	12,580	13,661	12,037	12,355						

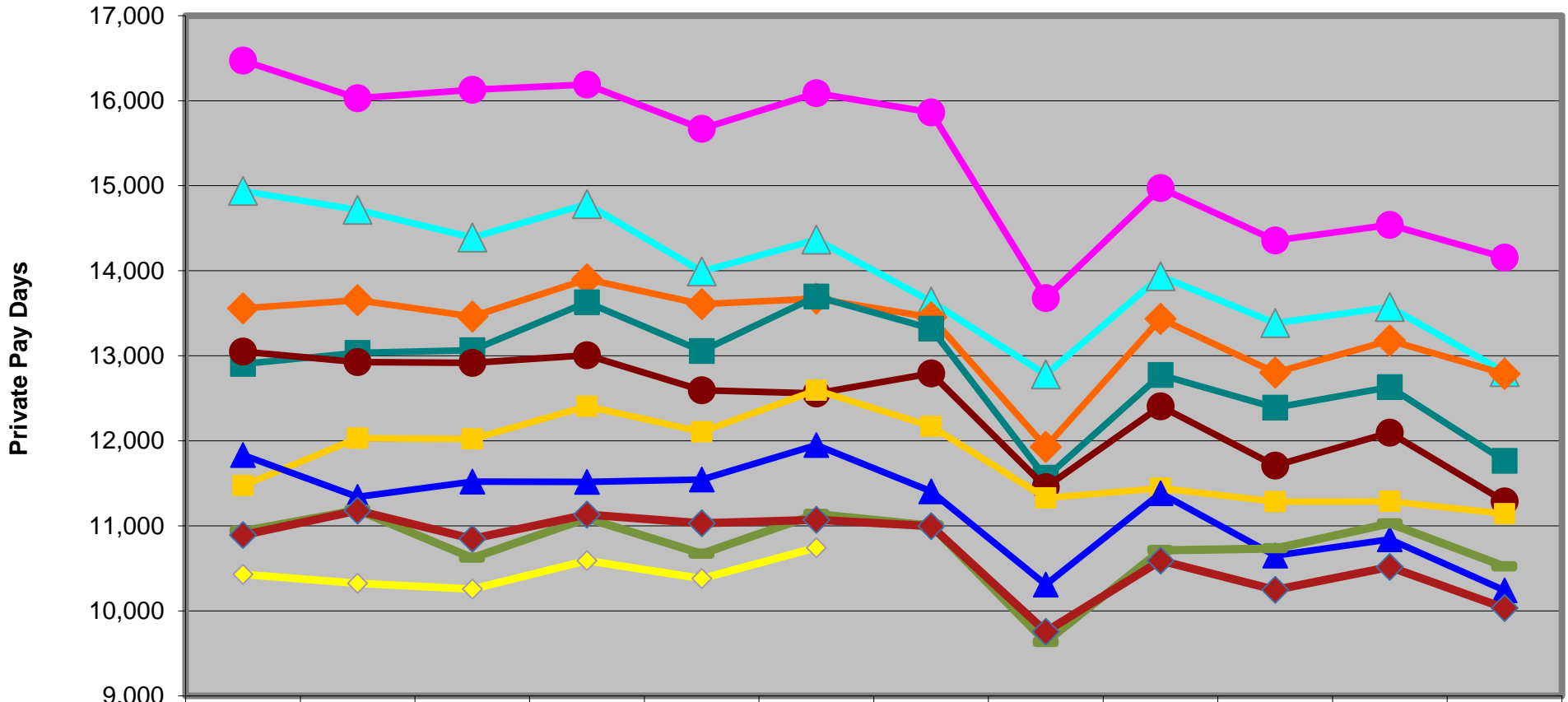
Month

Medicare Days from SFY 10 to SFY 16



Month

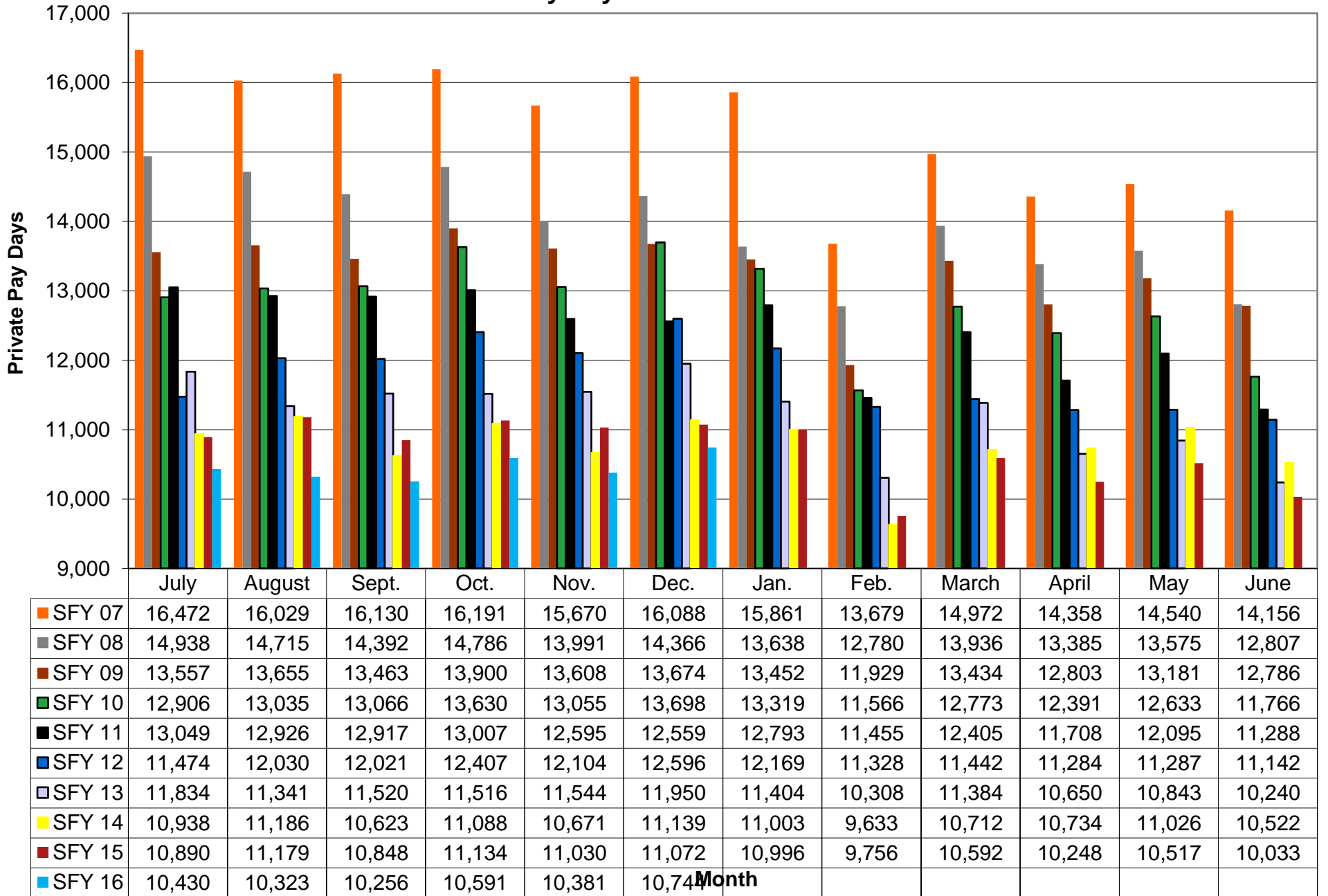
Private Pay Days from SFY 07 to SFY 16



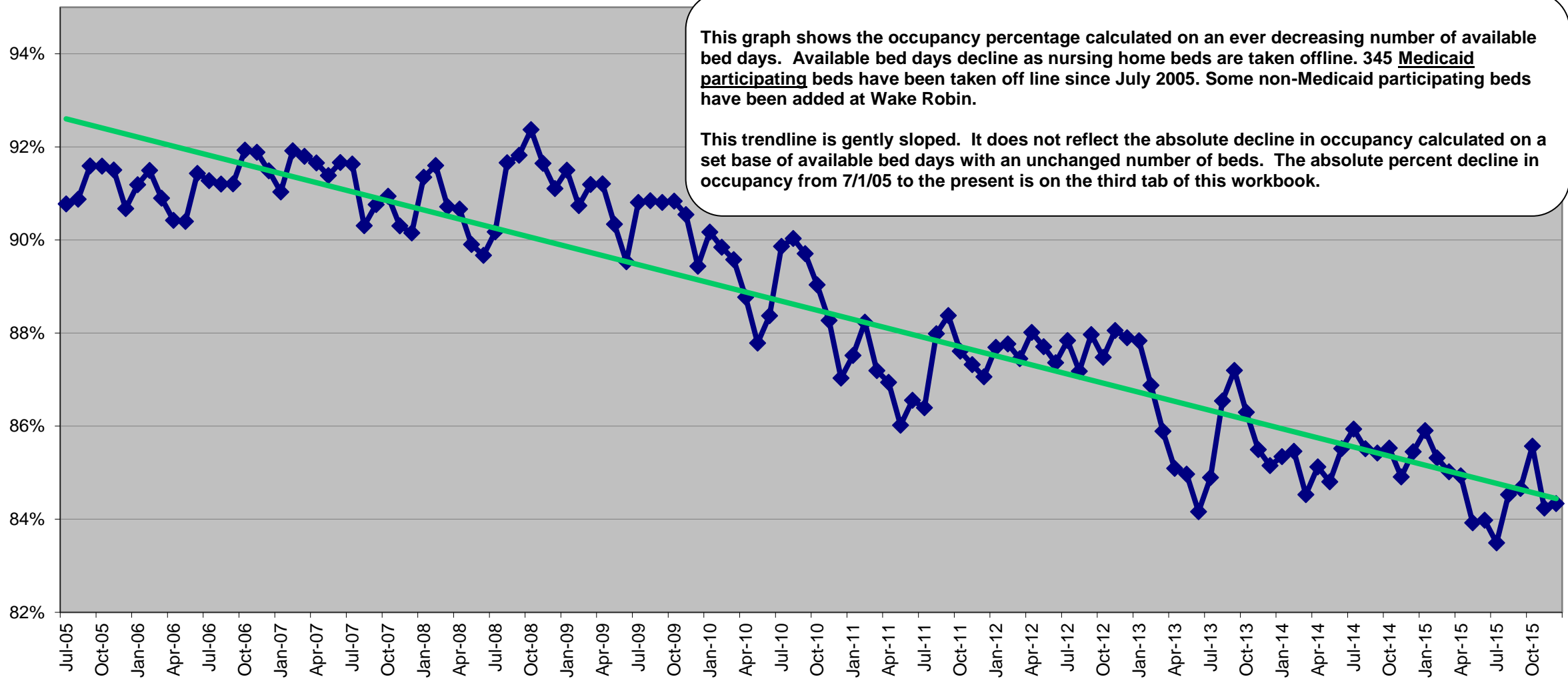
	July	August	Sept.	Oct.	Nov.	Dec.	Jan.	Feb.	March	April	May	June
SFY 07	16,472	16,029	16,130	16,191	15,670	16,088	15,861	13,679	14,972	14,358	14,540	14,156
SFY 08	14,938	14,715	14,392	14,786	13,991	14,366	13,638	12,780	13,936	13,385	13,575	12,807
SFY 09	13,557	13,655	13,463	13,900	13,608	13,674	13,452	11,929	13,434	12,803	13,181	12,786
SFY 10	12,906	13,035	13,066	13,630	13,055	13,698	13,319	11,566	12,773	12,391	12,633	11,766
SFY 11	13,049	12,926	12,917	13,007	12,595	12,559	12,793	11,455	12,405	11,708	12,095	11,288
SFY 12	11,474	12,030	12,021	12,407	12,104	12,596	12,169	11,328	11,442	11,284	11,287	11,142
SFY 13	11,834	11,341	11,520	11,516	11,544	11,950	11,404	10,308	11,384	10,650	10,843	10,240
SFY 14	10,938	11,186	10,623	11,088	10,671	11,139	11,003	9,633	10,712	10,734	11,026	10,522
SFY 15	10,890	11,179	10,848	11,134	11,030	11,072	10,996	9,756	10,592	10,248	10,517	10,033
SFY 16	10,430	10,323	10,256	10,591	10,381	10,744						

Month

Private Pay Days from SFY 07 to SFY 16

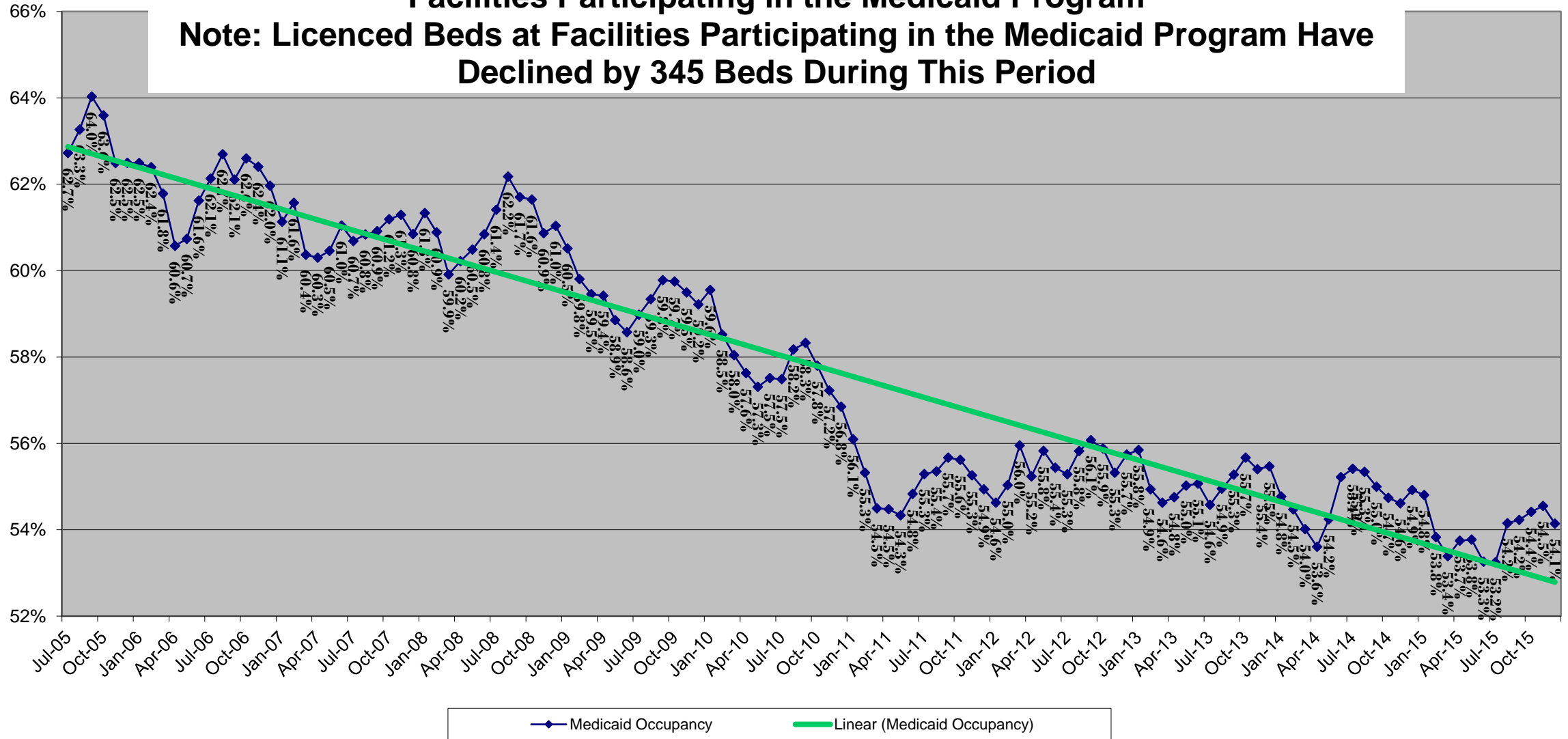


Total Occupancy as a Percent of Actual Available Bed Days



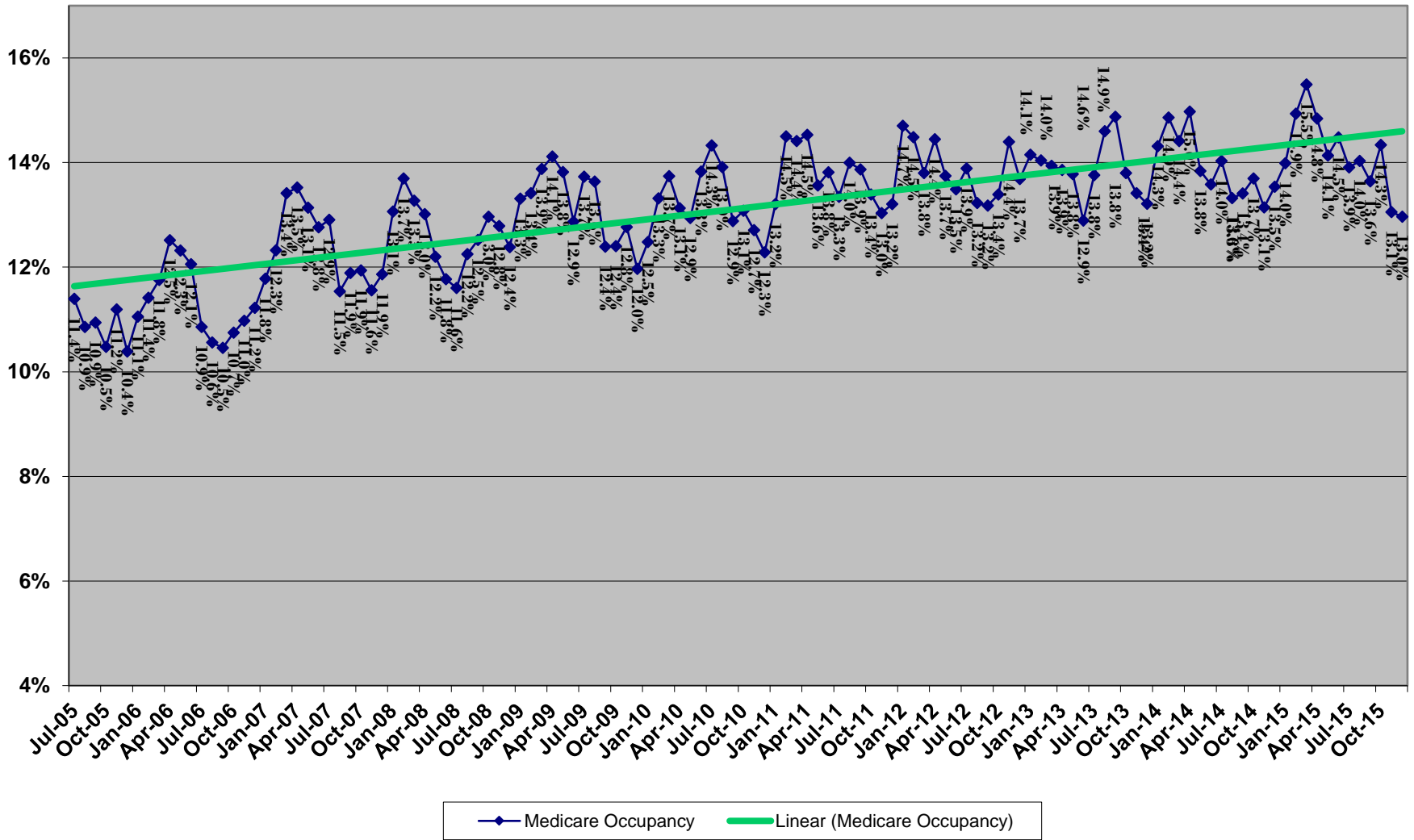
Medicaid Occupancy as a Percentage of Available Bed Days at Vermont Nursing Facilities Participating in the Medicaid Program

Note: Licenced Beds at Facilities Participating in the Medicaid Program Have Declined by 345 Beds During This Period



Medicare Occupancy as a Percentage of Available Bed Days at Vermont Nursing Facilities Participating in the Medicaid Program

Note: Licenced Beds at Facilities Participating in the Medicaid Program Have Declined by 345 Beds During This Period



Private Payor Occupancy as a Percentage of Available Bed Days at Vermont Nursing Facilities Participating in the Medicaid Program

Note: Licenced Beds at Facilities Participating in the Medicaid Program Have Declined by 345 Beds During This Period

