

YTD Utilization- Based on Capacity

Division of Rate Setting Schedule of Reported Resident Days by the Month

Nursing Home	Capacity as of Jan 98	1 Jan-04	2 Feb-04	3 Mar-04	4 Apr-04	5 May-04	6 Jun-04	7 Jul-04	8 Aug-04	9 Sep-04	10 Oct-04	11 Nov-04	12 Dec-04	1 Jan-05	2 Feb-05
Bel-Aire	44	96.85%	97.02%	93.40%	93.11%	97.80%	99.47%	97.73%	98.83%	99.62%	97.73%	95.83%	93.40%	94.50%	94.32%
Bennington	100	89.06%	87.72%	88.32%	89.03%	89.23%	89.70%	90.10%	91.32%	89.80%	84.13%	84.77%	89.10%	91.45%	92.11%
Berlin	152	87.73%	83.98%	76.19%	80.79%	84.91%	86.14%	84.72%	81.47%	77.57%	82.81%	85.18%	84.57%	85.57%	87.50%
Birchwood Terrace	160	91.79%	91.14%	91.75%	94.58%	97.08%	96.83%	97.04%	98.23%	98.02%	94.78%	95.40%	94.80%	96.09%	93.62%
Brookside-WRJ	67	94.22%	96.35%	97.35%	96.22%	94.03%	95.42%	93.93%	94.46%	94.48%	91.24%	87.86%	89.60%	89.74%	92.75%
Burlington	168	91.30%	88.96%	88.00%	91.47%	92.53%	92.60%	87.42%	76.67%	71.69%	74.39%	79.15%	78.09%	82.10%	86.61%
Cedar Hill	39	97.93%	93.02%	96.20%	95.73%	98.84%	99.74%	99.92%	99.26%	98.55%	96.53%	91.11%	97.77%	94.21%	98.08%
Centers for Living & Rehab	150	89.51%	92.92%	92.43%	91.24%	92.67%	89.96%	95.31%	95.18%	94.47%	92.97%	94.07%	94.32%	92.22%	92.64%
Crescent Manor	90	87.67%	85.67%	87.60%	89.85%	88.10%	87.48%	90.97%	91.86%	89.15%	90.79%	88.70%	87.99%	94.55%	97.18%
Derby Green	23	94.25%	92.05%	97.90%	100.00%	100.00%	99.57%	97.19%	97.48%	96.38%	95.79%	98.84%	98.32%	92.57%	93.01%
Franklin County Rehab	64	96.37%	98.28%	98.69%	96.61%	91.63%	96.04%	93.60%	97.43%	97.92%	94.15%	97.81%	94.20%	97.73%	97.66%
Gifford	20	100.00%	100.00%	97.42%	100.00%	100.00%	99.50%	100.00%	95.81%	98.00%	97.90%	100.00%	98.55%	99.35%	98.57%
Gill Odd Fellows	56	95.74%	93.60%	87.38%	84.94%	82.09%	80.83%	88.13%	88.13%	89.35%	89.80%	77.44%	81.74%	84.74%	92.60%
Green Mountain	73	87.49%	88.71%	85.73%	88.58%	94.21%	91.74%	81.93%	84.67%	88.68%	86.70%	90.32%	89.84%	93.50%	92.95%
Greensboro	30	93.33%	96.67%	96.67%	96.67%	95.70%	91.78%	93.44%	94.52%	95.33%	92.37%	93.33%	92.80%	93.33%	92.74%
Helen Porter	118	91.21%	90.44%	92.60%	95.49%	96.59%	98.32%	94.90%	96.71%	95.43%	95.88%	94.35%	94.81%	96.47%	95.10%
Maple Lane	71	96.46%	94.51%	95.00%	97.23%	93.91%	93.33%	93.14%	97.55%	96.95%	96.27%	96.20%	93.64%	95.55%	95.77%
Mayo	50	98.13%	99.10%	95.55%	95.80%	96.58%	98.67%	93.74%	98.19%	97.40%	98.00%	100.00%	99.42%	99.03%	99.00%
McGirr	30	98.49%	97.93%	94.84%	96.33%	90.75%	92.33%	89.35%	97.74%	92.89%	93.12%	91.11%	91.83%	92.37%	85.71%
Mountain View	166	97.28%	97.40%	97.10%	97.03%	95.55%	96.49%	97.05%	95.84%	96.14%	95.30%	96.08%	94.44%	92.83%	93.33%
Mt. Ascutney	66	94.77%	92.33%	93.05%	89.37%	90.27%	93.45%	94.44%	95.49%	94.37%	98.55%	96.72%	98.44%	97.11%	92.73%
Newport	60	74.84%	78.51%	83.87%	77.94%	74.89%	75.89%	73.71%	75.43%	75.06%	77.85%	77.89%	74.03%	68.49%	67.44%
Pine Heights at Brattleboro	124	98.67%	97.76%	96.81%	99.04%	98.95%	98.67%	95.36%	95.89%	94.92%	99.19%	97.04%	98.43%	93.99%	95.13%
Pine Knoll	60	92.85%	84.66%	86.67%	90.72%	93.71%	93.50%	91.99%	91.72%	95.61%	93.17%	97.39%	100.32%	98.87%	98.87%
Pines at Rutland	125	97.32%	96.74%	94.43%	92.88%	92.28%	95.47%	95.17%	95.12%	96.77%	97.50%	94.80%	91.74%	94.92%	98.06%
Prospect	21	98.46%	97.21%	95.24%	95.24%	95.24%	95.24%	95.24%	94.78%	95.56%	96.77%	89.52%	85.87%	85.71%	92.52%
Redstone Villa	30	99.57%	98.16%	96.77%	99.78%	93.76%	90.56%	93.98%	97.85%	99.11%	99.03%	95.33%	94.19%	92.37%	95.95%
Rowan Court	104	95.29%	95.95%	95.32%	97.56%	94.08%	94.36%	90.07%	88.46%	86.28%	90.04%	90.93%	90.11%	88.49%	88.67%
Rutland Healthcare	127	91.01%	88.95%	90.09%	89.79%	93.50%	91.60%	91.19%	91.08%	91.34%	91.97%	90.89%	92.13%	91.36%	90.02%
Springfield	102	95.79%	94.22%	96.24%	96.70%	96.96%	96.18%	95.79%	97.72%	95.03%	93.77%	92.65%	91.33%	84.57%	83.58%
St. Albans Healthcare	120	89.65%	90.09%	95.08%	93.53%	91.21%	88.42%	92.04%	95.05%	95.75%	95.83%	96.31%	94.33%	95.86%	95.21%
St. Johnsbury	110	94.19%	96.65%	97.89%	97.24%	93.43%	96.94%	96.01%	95.48%	94.85%	93.90%	94.15%	93.43%	94.60%	92.99%
Starr Farm	150	84.84%	86.09%	93.46%	94.00%	96.09%	95.44%	96.30%	96.58%	98.60%	95.42%	96.60%	94.80%	97.01%	96.07%
The Manor	40	90.32%	92.59%	93.95%	96.08%	98.15%	99.25%	97.18%	95.89%	96.50%	88.87%	97.42%	95.56%	97.98%	96.88%
Thompson House	43	96.70%	95.83%	98.05%	97.98%	98.42%	99.53%	97.00%	95.57%	98.14%	98.72%	98.29%	99.10%	99.47%	98.59%
Union House	44	87.83%	86.44%	90.18%	85.76%	91.06%	87.35%	89.66%	93.62%	98.26%	96.48%	94.62%	94.35%	93.04%	92.21%
Vernon Green	60	97.80%	102.70%	101.18%	101.94%	96.51%	98.39%	99.62%	99.89%	99.44%	97.37%	100.11%	97.37%	99.14%	98.21%
Veterans Home	184	87.54%	90.27%	91.41%	92.79%	92.74%	91.36%	91.64%	90.92%	90.07%	88.59%	89.73%	84.84%	83.03%	82.07%
Woodridge	153	95.95%	94.88%	96.18%	96.80%	95.57%	97.67%	96.46%	97.32%	95.86%	98.25%	98.00%	97.20%	97.11%	96.92%
Totals	3749	90.80%	90.02%	92.36%	93.22%	93.34%	93.54%	93.03%	93.02%	92.51%	92.21%	92.44%	91.78%	92.05%	92.33%

YTD Utilization- Based on Capacity

Division of Rate Setting Schedule of Reported Resident

Nursing Home	<div style="display: flex; justify-content: space-between;"> Between 90% and 85% Between 90% and 85% </div> <div style="display: flex; justify-content: space-between;"> Between 85% and 80% Between 85% and 80% </div> <div style="display: flex; justify-content: space-between;"> Between 80% and 50% Between 80% and 50% </div>															
	3	4	5	6	7	8	9	10	11	12	1	2	3	4	5	6
	Mar-05	Apr-05	May-05	Jun-05	Jul-05	Aug-05	Sep-05	Oct-05	Nov-05	Dec-05	Jan-06	Feb-06	Mar-06	Apr-06	May-06	Jun-06
Bel-Aire	94.43%	84.09%	91.06%	95.15%	94.43%	90.32%	83.79%	87.68%	89.47%	87.76%	89.96%	94.81%	96.70%	94.32%	85.78%	89.92%
Bennington	87.29%	87.23%	89.39%	88.53%	90.90%	89.52%	92.60%	91.87%	91.13%	90.29%	93.90%	91.36%	90.48%	90.57%	89.32%	91.47%
Berlin	83.51%	82.39%	85.72%	82.17%	81.07%	81.43%	84.41%	85.29%	85.39%	82.45%	77.46%	84.07%	81.81%	82.50%	78.37%	77.79%
Birchwood Terrace	93.08%	88.85%	89.86%	88.92%	92.84%	92.50%	93.52%	92.80%	94.63%	94.15%	94.92%	94.20%	94.01%	94.81%	96.59%	96.33%
Brookside-WRJ	89.31%	92.89%	93.02%	94.93%	95.33%	94.22%	95.87%	97.11%	93.53%	96.44%	92.01%	90.67%	92.01%	89.15%	82.52%	89.00%
Burlington	82.85%	75.75%	72.66%	73.02%	76.61%	79.13%	79.76%	80.55%	82.46%	85.08%	83.29%	80.93%	73.18%	75.06%	74.12%	78.97%
Cedar Hill	99.01%	94.62%	95.62%	94.02%	92.39%	101.24%	100.34%	99.34%	97.78%	97.11%	94.71%	92.58%	94.13%	95.73%	101.82%	102.56%
Centers for Living & Rehab	90.11%	89.89%	91.55%	93.84%	93.94%	93.46%	91.82%	89.31%	90.13%	89.16%	92.32%	95.24%	93.51%	94.20%	90.65%	94.40%
Crescent Manor	93.76%	93.11%	90.97%	93.89%	95.27%	95.66%	96.56%	95.41%	95.78%	92.26%	91.76%	92.86%	91.65%	94.56%	98.10%	97.11%
Derby Green	94.53%	92.75%	97.19%	97.97%	97.05%	99.30%	97.68%	94.67%	94.49%	93.83%	92.29%	93.01%	98.60%	97.68%	99.86%	100.00%
Franklin County Rehab	97.08%	96.09%	88.36%	96.56%	95.97%	95.92%	94.84%	96.52%	96.41%	90.32%	94.81%	96.09%	94.76%	92.34%	94.76%	95.78%
Gifford	100.00%	100.00%	100.00%	100.00%	100.00%	100.00%	100.00%	98.06%	99.67%	100.00%	100.00%	100.00%	98.87%	99.17%	99.35%	100.00%
Gill Odd Fellows	92.80%	91.73%	96.14%	97.56%	96.31%	98.85%	98.39%	96.49%	87.62%	80.82%	86.58%	85.33%	83.01%	87.14%	88.71%	91.07%
Green Mountain	86.39%	78.72%	75.87%	73.65%	81.66%	84.84%	90.46%	94.12%	92.60%	92.18%	91.25%	87.72%	90.85%	87.63%	91.29%	88.72%
Greensboro	93.66%	96.67%	96.67%	96.67%	96.67%	96.67%	95.56%	93.12%	92.67%	91.94%	92.47%	95.36%	90.00%	91.56%	92.58%	92.78%
Helen Porter	96.53%	92.79%	90.48%	89.87%	94.78%	90.60%	91.81%	91.06%	94.44%	95.88%	96.13%	95.20%	96.87%	96.73%	97.45%	97.02%
Maple Lane	94.05%	94.41%	95.46%	96.15%	98.05%	95.37%	95.40%	94.23%	95.45%	96.14%	94.78%	96.93%	95.59%	93.19%	92.78%	95.87%
Mayo	98.58%	97.33%	96.52%	96.80%	97.55%	99.61%	99.47%	99.40%	99.42%	98.47%	99.94%	99.68%	99.93%	99.68%	99.20%	99.29%
McGirr	83.01%	82.22%	84.41%	80.22%	80.00%	83.23%	79.56%	80.22%	81.56%	82.37%	87.31%	92.86%	90.11%	87.89%	88.28%	83.56%
Mountain View	96.68%	94.54%	92.15%	95.18%	92.27%	90.98%	92.29%	94.75%	94.30%	92.38%	91.43%	89.54%	87.95%	90.24%	88.87%	92.55%
Mt. Ascutney	84.20%	85.46%	87.82%	86.32%	86.93%	84.04%	82.36%	85.43%	85.57%	82.04%	94.52%	95.00%	94.19%	96.53%	95.16%	95.20%
Newport	65.65%	63.06%	64.68%	71.44%	69.25%	68.87%	67.28%	75.03%	71.47%	71.23%	71.61%	72.29%	72.58%	69.20%	68.77%	71.93%
Pine Heights at Brattleboro	96.25%	94.63%	94.11%	91.88%	93.71%	91.94%	94.25%	90.44%	86.08%	89.60%	98.67%	95.31%	97.50%	97.63%	93.39%	95.42%
Pine Knoll	100.32%	99.39%	98.12%	97.72%	93.92%	96.83%	98.11%	98.28%	97.28%	99.30%	100.65%	98.81%	99.03%	97.61%	97.74%	99.67%
Pines at Rutland	92.88%	91.23%	90.94%	90.88%	92.67%	94.17%	94.32%	94.04%	96.48%	91.35%	93.65%	95.91%	95.95%	94.43%	93.96%	94.21%
Prospect	87.86%	81.59%	85.71%	90.16%	96.01%	95.24%	92.06%	94.01%	95.08%	86.64%	90.48%	93.71%	95.24%	93.65%	98.62%	100.00%
Redstone Villa	92.58%	95.67%	94.95%	92.44%	95.59%	96.88%	92.44%	89.57%	95.11%	94.52%	93.87%	89.52%	94.62%	92.11%	94.84%	97.11%
Rowan Court	80.77%	76.60%	79.03%	83.69%	79.90%	79.71%	85.93%	86.88%	84.46%	86.01%	86.41%	86.16%	86.14%	80.54%	79.22%	82.60%
Rutland Healthcare	89.81%	89.11%	89.28%	89.97%	89.89%	89.28%	91.94%	94.39%	93.62%	95.45%	95.58%	93.87%	93.68%	93.86%	93.78%	94.70%
Springfield	88.30%	85.92%	86.40%	92.94%	91.90%	95.29%	94.74%	90.42%	87.35%	91.62%	87.89%	90.90%	91.08%	87.03%	87.73%	88.89%
St. Albans Healthcare	95.62%	94.22%	88.84%	87.00%	93.04%	92.12%	93.06%	92.42%	95.58%	94.57%	96.40%	95.80%	98.06%	97.19%	95.00%	96.92%
St. Johnsbury	95.43%	93.55%	94.84%	92.15%	91.52%	93.64%	95.21%	93.17%	94.88%	87.30%	93.37%	94.06%	96.07%	93.61%	94.87%	93.94%
Starr Farm	97.70%	96.96%	95.72%	97.62%	97.59%	95.18%	94.98%	96.62%	96.56%	93.87%	94.34%	93.83%	92.84%	93.91%	93.53%	92.91%
The Manor	97.58%	94.08%	94.19%	93.50%	96.05%	96.85%	97.00%	98.39%	97.75%	98.31%	98.47%	96.34%	95.48%	85.92%	96.77%	97.58%
Thompson House	98.20%	96.74%	99.40%	99.38%	97.75%	95.20%	92.17%	94.22%	97.13%	97.00%	94.45%	93.27%	91.22%	93.41%	91.82%	90.85%
Union House	93.62%	94.62%	96.26%	93.33%	95.09%	90.03%	94.55%	92.60%	88.79%	90.98%	89.66%	93.43%	95.31%	94.70%	93.99%	91.59%
Vernon Green	95.70%	93.56%	95.48%	101.00%	99.09%	96.56%	96.83%	99.03%	100.17%	100.00%	99.35%	99.05%	98.23%	98.94%	98.33%	97.61%
Veterans Home	82.91%	82.19%	85.05%	86.85%	86.85%	86.47%	86.34%	82.59%	81.99%	82.07%	81.59%	84.76%	83.78%	83.84%	84.85%	85.58%
Woodridge	97.34%	94.90%	95.93%	95.32%	94.56%	97.05%	97.47%	96.58%	97.76%	95.34%	93.86%	94.77%	93.00%	90.74%	96.23%	96.23%
Totals	91.20%	89.23%	89.49%	90.22%	90.78%	90.87%	91.59%	91.59%	91.50%	90.67%	91.19%	91.50%	90.90%	90.42%	90.40%	91.43%

YTD Utilization- Based on Capacity

Division of Rate Setting Schedule of Reported Resident

Low Occupancy Indicators

6	Between 90% and 85%
	Between 85% and 80%
	Between 80% and 50%

Nursing Home	7 Jul-06	8 Aug-06	9 Sep-06	10 Oct-06	11 Nov-06	12 Dec-06	1 Jan-07	2 Feb-07	3 Mar-07	4 Apr-07	5 May-07	6 Jun-07	7 Jul-07	8 Aug-07	9 Sep-07	10 Oct-07
Bel-Aire	91.20%	95.75%	93.41%	94.65%	96.59%	95.09%	95.38%	93.59%	93.62%	96.06%	94.94%	96.21%	93.99%	90.03%	96.21%	94.87%
Bennington	90.74%	89.81%	86.63%	85.97%	89.30%	87.16%	92.45%	90.54%	92.77%	91.10%	91.13%	92.07%	90.32%	90.42%	90.43%	94.06%
Berlin	79.82%	78.71%	81.49%	84.68%	82.85%	83.96%	84.38%	84.96%	85.12%	84.82%	83.21%	83.20%	83.49%	84.00%	85.68%	83.28%
Birchwood Terrace	96.27%	96.61%	95.79%	96.27%	97.17%	93.23%	93.69%	93.79%	90.93%	93.15%	93.81%	95.98%	95.04%	93.95%	94.46%	92.58%
Brookside-WRJ	88.06%	90.85%	88.91%	82.91%	93.58%	90.32%	94.75%	95.36%	93.07%	93.93%	92.39%	91.99%	92.83%	92.39%	92.49%	87.29%
Burlington	80.80%	74.14%	72.72%	95.08%	93.57%	93.86%	93.16%	92.15%	91.83%	92.51%	89.14%	89.97%	91.07%	89.12%	94.66%	91.30%
Cedar Hill	100.08%	99.83%	101.62%	98.59%	95.04%	96.11%	98.59%	102.29%	101.49%	98.46%	99.17%	98.97%	97.44%	95.53%	99.15%	100.00%
Centers for Living & Rehab	94.60%	94.54%	92.11%	91.61%	90.82%	87.83%	90.88%	88.50%	92.73%	91.47%	92.37%	89.62%	90.90%	89.78%	88.73%	92.19%
Crescent Manor	96.31%	96.06%	96.96%	93.41%	93.63%	92.65%	92.26%	93.25%	94.91%	94.85%	94.62%	96.48%	98.82%	96.38%	96.85%	97.35%
Derby Green	100.00%	98.32%	98.99%	100.00%	98.41%	100.00%	100.00%	100.00%	100.00%	100.00%	99.86%	99.86%	99.02%	97.76%	100.00%	99.44%
Franklin County Rehab	96.32%	96.22%	94.32%	93.90%	92.03%	91.08%	89.82%	87.83%	90.37%	95.05%	95.56%	93.85%	95.21%	93.09%	95.16%	89.62%
Gifford	98.39%	100.00%	80.14%	91.94%	99.00%	99.68%	99.78%	98.45%	99.57%	100.00%	100.00%	100.00%	96.67%	97.42%	100.00%	98.92%
Gill Odd Fellows	90.96%	97.58%	98.57%	95.16%	86.61%	81.39%	80.76%	81.38%	82.60%	79.82%	77.71%	75.77%	77.88%	71.43%	73.21%	78.92%
Green Mountain	92.84%	95.58%	98.81%	96.20%	91.69%	94.26%	93.99%	91.49%	92.27%	88.63%	95.45%	95.21%	97.75%	96.29%	96.76%	96.20%
Greensboro	92.47%	91.29%	91.44%	94.09%	96.44%	91.72%	95.16%	96.31%	99.14%	93.22%	93.33%	93.67%	92.04%	93.76%	96.00%	91.61%
Helen Porter	99.17%	96.99%	99.02%	95.98%	97.87%	97.02%	96.59%	96.94%	94.65%	95.68%	96.62%	95.30%	98.68%	95.76%	94.73%	93.46%
Maple Lane	94.59%	94.64%	98.08%	99.23%	97.65%	98.05%	98.23%	97.74%	97.00%	99.39%	96.41%	98.17%	97.55%	95.87%	96.43%	100.00%
Mayo	96.26%	98.90%	98.13%	99.23%	96.47%	98.45%	97.03%	97.86%	99.29%	99.13%	99.23%	99.13%	97.68%	91.94%	91.40%	98.71%
McGirr	88.92%	94.30%	89.22%	98.49%	97.56%	98.06%	97.42%	93.57%	96.88%	92.78%	97.53%	100.00%	97.74%	99.03%	94.33%	93.01%
Mountain View	90.54%	91.18%	92.09%	91.84%	90.32%	89.80%	91.55%	92.04%	90.28%	90.06%	89.68%	90.84%	89.39%	81.83%	80.06%	85.78%
Mt. Ascutney	93.35%	96.00%	91.53%	91.23%	93.73%	92.90%	93.68%	92.86%	92.84%	92.33%	92.13%	91.80%	88.19%	88.00%	83.27%	78.84%
Newport	74.26%	72.06%	78.67%	84.06%	89.47%	85.42%	87.48%	90.64%	92.32%	86.67%	86.19%	85.33%	80.71%	77.87%	86.33%	89.10%
Pine Heights at Brattleboro	96.21%	98.15%	99.17%	93.27%	89.75%	92.18%	97.10%	92.10%	97.34%	95.71%	95.24%	93.75%	89.88%	93.10%	97.88%	96.09%
Pine Knoll	99.52%	99.09%	100.06%	99.41%	99.78%	96.88%	98.55%	97.62%	93.33%	94.39%	95.54%	94.72%	98.06%	99.84%	93.17%	96.51%
Pines at Rutland	96.52%	95.02%	95.39%	95.56%	93.57%	91.74%	92.98%	94.57%	91.97%	90.56%	87.79%	85.28%	83.95%	82.76%	80.19%	79.56%
Prospect	100.00%	100.00%	98.41%	100.00%	98.10%	98.46%	94.01%	90.48%	92.01%	99.21%	96.62%	93.97%	90.48%	95.24%	95.24%	95.24%
Redstone Villa	90.11%	98.60%	98.00%	95.48%	97.11%	97.10%	96.02%	89.52%	91.51%	93.11%	95.70%	95.56%	95.05%	90.54%	96.89%	93.33%
Rowan Court	82.35%	85.67%	78.78%	72.83%	79.13%	86.10%	90.01%	88.12%	82.17%	84.29%	81.58%	83.69%	86.07%	86.66%	82.53%	85.42%
Rutland Healthcare	93.27%	93.01%	94.93%	93.85%	92.36%	93.88%	93.35%	93.17%	91.85%	86.93%	88.65%	93.20%	91.03%	91.57%	92.47%	91.97%
Springfield	89.34%	83.05%	83.66%	85.07%	84.44%	89.12%	84.25%	85.15%	83.78%	86.93%	83.90%	83.76%	83.87%	86.78%	86.44%	84.16%
St. Albans Healthcare	96.08%	96.42%	96.97%	98.33%	97.81%	96.85%	95.56%	94.08%	93.06%	92.94%	93.82%	96.94%	95.24%	95.05%	94.50%	95.30%
St. Johnsbury	90.41%	84.69%	81.24%	87.07%	92.79%	93.84%	93.31%	90.26%	88.18%	88.91%	89.09%	81.52%	82.08%	82.52%	88.03%	86.69%
Starr Farm	93.33%	95.31%	96.51%	97.40%	98.02%	94.84%	94.00%	94.64%	96.00%	95.58%	94.45%	98.22%	97.10%	95.59%	95.49%	95.81%
The Manor	97.50%	94.44%	93.83%	95.65%	95.08%	97.10%	97.10%	96.88%	97.90%	99.00%	95.73%	98.17%	99.52%	97.34%	99.50%	97.90%
Thompson House	96.02%	97.67%	96.12%	99.25%	97.36%	97.00%	97.97%	98.01%	96.40%	93.41%	96.25%	96.28%	98.35%	97.60%	98.29%	96.85%
Union House	90.62%	95.23%	91.59%	97.58%	95.68%	96.85%	95.01%	99.92%	99.27%	98.64%	98.75%	98.26%	97.51%	96.33%	98.03%	97.29%
Vernon Green	97.74%	99.30%	100.06%	95.22%	95.56%	97.42%	98.39%	94.40%	94.84%	96.06%	98.71%	97.61%	98.06%	91.88%	95.11%	96.18%
Veterans Home	84.69%	86.69%	86.14%	86.43%	87.25%	86.13%	85.97%	86.06%	86.41%	87.75%	87.34%	87.30%	88.80%	85.83%	85.20%	85.08%
Woodridge	95.40%	94.50%	96.38%	95.66%	92.75%	92.66%	93.34%	89.31%	91.19%	90.26%	89.96%	91.81%	93.67%	93.49%	91.74%	93.74%
Totals	91.27%	91.20%	91.20%	91.93%	91.88%	91.48%	91.03%	91.92%	91.80%	91.66%	91.38%	91.66%	91.63%	90.31%	90.76%	90.94%

YTD Utilization- Based on Capacity

Division of Rate Setting Schedule of Reported Resident

Nursing Home	Between 90% and 85%						Between 90% and 85%					
	Between 85% and 80%						Between 85% and 80%					
	Between 80% and 50%						Between 80% and 50%					
	11 Nov-07	12 Dec-07	1 Jan-08	2 Feb-08	3 Mar-08	4 Apr-08	5 May-08	6 Jun-08	7 Jul-08	8 Aug-08	9 Sep-08	10 Oct-08
Bel-Aire	97.27%	97.36%	95.89%	96.16%	97.95%	96.67%	94.79%	91.89%	91.57%	87.46%	90.00%	90.18%
Bennington	90.70%	88.45%	89.39%	90.41%	87.10%	81.90%	80.74%	88.30%	88.68%	86.61%	90.73%	90.16%
Berlin	82.21%	82.28%	84.70%	82.49%	80.01%	84.21%	86.09%	78.20%	86.09%	86.09%	81.94%	84.49%
Birchwood Terrace	92.19%	93.51%	94.82%	96.88%	95.38%	95.63%	96.88%	95.52%	92.68%	97.14%	97.29%	97.26%
Brookside-WRJ	90.85%	90.71%	93.16%	97.27%	94.46%	86.92%	83.15%	87.66%	87.96%	90.66%	91.34%	93.84%
Burlington	90.13%	86.89%	87.89%	86.23%	87.74%	87.22%	89.63%	90.03%	91.53%	91.30%	88.76%	92.83%
Cedar Hill	101.28%	100.25%	100.08%	99.03%	97.60%	98.38%	98.43%	98.89%	98.76%	97.68%	99.15%	99.01%
Centers for Living & Rehab	93.20%	92.84%	92.15%	90.74%	91.51%	86.27%	89.81%	89.69%	93.87%	94.52%	94.53%	93.59%
Crescent Manor	94.11%	93.73%	95.41%	97.51%	96.56%	93.00%	90.68%	89.85%	91.58%	95.45%	94.70%	96.09%
Derby Green	100.00%	100.00%	100.00%	100.00%	100.00%	100.00%	100.00%	100.00%	99.58%	99.58%	100.00%	100.00%
Franklin County Rehab	92.71%	91.83%	94.81%	93.00%	93.85%	93.96%	90.73%	91.51%	93.90%	89.36%	91.20%	94.00%
Gifford	98.56%	100.00%	100.00%	99.43%	100.00%	100.00%	100.00%	100.00%	100.00%	96.77%	98.67%	97.20%
Gill Odd Fellows	76.13%	93.03%	79.78%	82.82%	79.55%	73.81%	72.87%	72.74%	73.27%	74.88%	76.43%	79.38%
Green Mountain	95.98%	92.27%	95.93%	93.34%	94.61%	87.44%	92.62%	91.96%	87.36%	94.56%	95.84%	97.17%
Greensboro	93.89%	95.38%	91.94%	92.87%	97.53%	98.00%	92.69%	96.44%	94.62%	94.73%	98.67%	99.78%
Helen Porter	91.05%	93.52%	95.94%	93.10%	91.06%	96.41%	95.24%	93.21%	97.20%	97.94%	97.90%	96.80%
Maple Lane	99.53%	98.36%	97.59%	98.49%	97.64%	96.76%	92.55%	90.80%	86.64%	88.91%	89.53%	93.91%
Mayo	98.73%	98.26%	99.68%	99.45%	97.03%	96.93%	98.26%	98.53%	98.19%	99.10%	100.00%	98.90%
McGirr	89.44%	90.11%	88.71%	91.49%	85.81%	87.11%	85.48%	91.78%	93.55%	95.16%	96.44%	94.41%
Mountain View	86.51%	85.06%	89.29%	88.95%	87.27%	85.84%	84.98%	83.96%	85.85%	89.53%	89.52%	87.25%
Mt. Ascutney	78.00%	72.52%	100.00%	95.17%	91.43%	91.43%	91.43%	91.43%	91.43%	91.43%	89.05%	98.65%
Newport	90.93%	96.58%	93.29%	92.83%	92.77%	93.40%	88.90%	90.87%	86.97%	82.97%	86.40%	80.06%
Pine Heights at Brattleboro	94.46%	97.78%	97.90%	94.35%	93.55%	94.63%	91.05%	89.21%	92.22%	96.57%	92.50%	93.67%
Pine Knoll	92.22%	90.81%	92.10%	89.02%	94.03%	95.56%	96.40%	96.67%	88.92%	87.63%	86.67%	96.61%
Pines at Rutland	81.36%	79.10%	80.26%	81.30%	79.07%	82.08%	78.22%	79.57%	81.32%	85.06%	84.19%	81.99%
Prospect	99.05%	100.00%	96.01%	95.24%	93.86%	95.08%	95.55%	94.29%	98.00%	98.00%	96.67%	94.93%
Redstone Villa	94.00%	97.10%	96.67%	97.47%	93.01%	95.00%	93.23%	95.67%	96.67%	92.80%	92.00%	93.98%
Rowan Court	85.06%	86.20%	85.05%	85.08%	84.21%	92.50%	94.05%	92.47%	91.43%	94.22%	98.19%	97.45%
Rutland Healthcare	92.49%	91.82%	92.58%	94.33%	91.41%	93.99%	87.38%	90.68%	90.98%	93.62%	95.64%	93.40%
Springfield	82.12%	85.20%	84.57%	80.43%	79.89%	83.07%	89.25%	88.17%	80.55%	83.78%	83.20%	89.78%
St. Albans Healthcare	96.31%	92.72%	91.40%	91.75%	91.32%	86.28%	82.07%	83.22%	87.50%	89.54%	86.08%	83.84%
St. Johnsbury	81.45%	83.49%	84.57%	89.78%	90.53%	91.67%	87.21%	83.24%	84.28%	84.13%	84.52%	87.80%
Starr Farm	95.62%	97.85%	97.42%	98.39%	95.57%	96.02%	97.38%	92.87%	92.41%	94.77%	96.87%	95.29%
The Manor	97.58%	98.71%	98.23%	98.97%	98.79%	98.00%	98.87%	97.25%	98.48%	98.21%	96.85%	99.10%
Thompson House	99.38%	90.92%	96.02%	96.79%	97.15%	93.80%	94.67%	93.41%	93.25%	98.35%	97.98%	98.20%
Union House	95.98%	97.21%	96.55%	96.16%	95.16%	99.77%	99.71%	97.27%	95.45%	93.77%	94.62%	97.07%
Vernon Green	98.39%	99.68%	98.98%	99.94%	97.74%	96.22%	97.85%	96.78%	96.29%	99.57%	99.56%	99.46%
Veterans Home	82.32%	79.56%	83.58%	87.12%	87.41%	88.59%	86.08%	89.19%	89.87%	91.31%	90.94%	91.29%
Woodridge	90.78%	88.24%	91.44%	93.40%	93.97%	93.57%	90.93%	92.51%	90.89%	92.79%	94.90%	93.30%
Totals	90.30%	90.15%	91.35%	91.60%	90.71%	90.67%	89.90%	89.67%	90.17%	91.66%	91.82%	92.37%

YTD Utilization- Based on Capacity

Division of Rate Setting Schedule of Reported Resident

Between 90% and 85%

Between 90% and 85%

Between 85% and 80%

Between 85% and 80%

Between 80% and 50%

Between 80% and 50%

Nursing Home	11	12	1	2	3	4	5	6	7	8	9
	Nov-08	Dec-08	Jan-09	Feb-09	Mar-09	Apr-09	May-09	Jun-09	Jul-09	Aug-09	Sep-09
Bel-Aire	94.32%	88.20%	88.42%	87.50%	94.35%	94.70%	95.67%	97.73%	94.57%	94.21%	96.89%
Bennington	87.57%	87.87%	90.81%	92.89%	90.35%	89.07%	87.52%	90.23%	88.58%	86.10%	88.37%
Berlin	84.40%	84.15%	82.66%	79.46%	77.17%	80.00%	83.07%	81.99%	78.61%	81.42%	79.98%
Birchwood Terrace	96.58%	95.54%	95.91%	94.84%	94.88%	97.67%	96.47%	95.56%	97.24%	96.37%	97.48%
Brookside-WRJ	97.26%	97.21%	97.06%	93.18%	93.31%	89.15%	91.04%	92.69%	93.93%	95.09%	94.78%
Burlington	91.24%	89.61%	91.78%	89.43%	86.30%	88.36%	84.13%	81.77%	84.10%	86.30%	85.03%
Cedar Hill	98.03%	98.26%	98.35%	98.81%	99.09%	97.18%	98.10%	94.27%	97.35%	95.62%	102.56%
Centers for Living & Rehab	89.56%	90.30%	95.16%	88.71%	90.62%	86.49%	86.52%	85.24%	81.20%	79.94%	80.22%
Crescent Manor	95.74%	92.44%	93.41%	94.92%	93.44%	91.78%	90.90%	91.30%	96.09%	98.28%	96.44%
Derby Green	100.00%	98.18%	99.30%	97.83%	100.00%	100.00%	99.86%	98.99%	100.00%	100.00%	100.00%
Franklin County Rehab	91.82%	93.95%	96.52%	95.93%	96.57%	93.18%	93.40%	94.32%	90.88%	93.65%	87.50%
Gifford	96.78%	93.66%	96.67%	99.29%	98.71%	99.67%	100.00%	99.78%	98.92%	99.46%	99.78%
Gill Odd Fellows	71.61%	75.69%	76.56%	78.76%	80.24%	84.94%	91.36%	81.49%	86.35%	85.37%	79.82%
Green Mountain	94.34%	91.52%	92.05%	91.59%	94.92%	96.30%	93.11%	92.37%	95.58%	91.87%	91.87%
Greensboro	98.44%	97.96%	97.42%	93.45%	94.09%	95.89%	97.63%	100.00%	99.25%	97.20%	94.44%
Helen Porter	96.70%	94.29%	91.86%	91.60%	94.90%	94.44%	91.27%	92.57%	96.62%	96.68%	95.59%
Maple Lane	95.45%	94.09%	95.05%	97.59%	95.37%	88.69%	88.19%	83.52%	86.05%	92.87%	96.90%
Mayo	99.60%	99.35%	99.48%	98.57%	98.58%	99.47%	98.19%	99.87%	99.23%	98.77%	99.27%
McGirr	94.11%	94.30%	96.02%	97.14%	98.82%	89.33%	92.80%	91.22%	88.28%	74.41%	74.33%
Mountain View	89.70%	88.67%	88.50%	88.51%	90.56%	89.46%	88.50%	86.97%	93.73%	95.59%	97.00%
Mt. Ascutney	96.77%	94.48%	91.47%	90.32%	90.32%	98.45%	92.74%	88.45%	97.81%	97.42%	100.00%
Newport	85.67%	81.68%	77.48%	78.93%	78.58%	81.00%	80.13%	83.67%	82.65%	82.97%	84.13%
Pine Heights at Brattleboro	93.88%	91.09%	89.11%	89.64%	88.79%	90.29%	91.33%	90.21%	88.75%	86.65%	87.71%
Pine Knoll	90.83%	92.90%	97.69%	90.95%	87.74%	84.06%	86.61%	85.39%	89.09%	88.49%	88.67%
Pines at Rutland	84.43%	88.62%	89.26%	88.89%	91.17%	90.08%	87.25%	86.35%	92.08%	93.26%	96.91%
Prospect	96.35%	98.46%	100.00%	91.50%	89.55%	84.76%	90.63%	87.14%	96.93%	94.78%	89.68%
Redstone Villa	98.00%	87.20%	92.47%	91.67%	89.89%	93.11%	99.35%	95.33%	95.81%	94.62%	83.78%
Rowan Court	94.44%	92.81%	96.30%	95.09%	96.30%	96.81%	93.68%	95.31%	93.45%	93.01%	93.37%
Rutland Healthcare	87.80%	86.44%	88.06%	88.25%	92.23%	91.92%	92.53%	88.24%	91.24%	88.62%	91.21%
Springfield	89.71%	88.93%	88.24%	85.22%	89.94%	91.18%	89.78%	85.78%	83.08%	81.56%	85.07%
St. Albans Healthcare	80.36%	81.21%	82.77%	86.28%	84.60%	81.06%	75.38%	78.97%	87.18%	87.82%	85.97%
St. Johnsbury	89.91%	87.27%	81.06%	87.53%	91.32%	91.76%	88.15%	90.18%	88.33%	82.61%	80.58%
Starr Farm	94.67%	95.85%	97.10%	95.48%	94.09%	96.56%	94.60%	94.38%	94.80%	95.83%	94.80%
The Manor	99.07%	99.73%	98.79%	99.21%	99.01%	97.82%	98.84%	98.19%	99.28%	97.72%	99.63%
Thompson House	98.22%	98.12%	97.37%	96.76%	96.62%	97.36%	96.77%	92.09%	94.67%	98.27%	97.91%
Union House	94.24%	97.51%	96.26%	96.02%	92.89%	95.83%	92.23%	93.11%	92.30%	93.04%	94.17%
Vernon Green	96.94%	99.68%	97.58%	97.26%	98.49%	98.72%	97.10%	92.28%	94.73%	97.80%	99.50%
Veterans Home	90.73%	89.30%	88.34%	86.60%	88.30%	87.80%	86.73%	86.21%	87.52%	87.63%	86.42%
Woodridge	93.92%	94.14%	94.50%	92.09%	90.30%	94.62%	94.05%	93.29%	93.15%	96.18%	93.07%
Totals	91.64%	91.11%	91.50%	90.74%	91.19%	91.21%	90.34%	89.53%	90.50%	90.54%	90.81%

YTD Utilization- Based on Capacity

Division of Rate Setting Schedule of Reported Resident

Between 90% and 85%

Between 85% and 80%

Between 80% and 50%

Nursing Home	10 Oct-09	11 Nov-09	12 Dec-09	1 Jan-10	2 Feb-10	3 Mar-10	4 Apr-10	5 May-10	6 Jun-10	7 Jul-10
Bel-Aire	97.43%	96.44%	95.53%	92.82%	96.19%	94.72%	90.23%	92.30%	93.86%	94.21%
Bennington	88.39%	90.13%	89.55%	89.10%	84.82%	89.87%	88.40%	85.13%	85.83%	87.87%
Berlin	79.84%	80.38%	75.82%	84.49%	80.55%	84.15%	80.52%	78.79%	80.69%	82.52%
Birchwood Terrace	95.93%	96.92%	90.89%	90.44%	90.20%	86.83%	91.20%	87.51%	93.04%	92.30%
Brookside-WRJ	90.03%	90.50%	89.65%	89.65%	92.00%	87.77%	86.07%	81.51%	81.59%	86.23%
Burlington	86.71%	82.14%	80.82%	84.23%	84.58%	85.23%	87.57%	89.89%	94.52%	89.94%
Cedar Hill	98.35%	99.74%	98.68%	93.22%	92.12%	95.62%	95.47%	94.79%	95.30%	95.12%
Centers for Living & Rehab	81.53%	84.38%	87.89%	92.47%	89.26%	87.66%	80.78%	79.66%	79.20%	82.39%
Crescent Manor	95.09%	95.52%	94.30%	95.16%	95.36%	92.72%	94.78%	90.22%	93.48%	94.70%
Derby Green	100.00%	100.00%	99.86%	100.00%	100.00%	100.00%	99.86%	99.44%	100.00%	100.00%
Franklin County Rehab	89.77%	91.15%	87.75%	94.30%	91.52%	85.84%	88.33%	87.85%	92.71%	96.22%
Gifford	100.00%	103.33%	99.25%	87.31%	100.00%	99.14%	99.22%	99.14%	98.00%	100.00%
Gill Odd Fellows	78.63%	71.67%	77.94%	82.20%	84.57%	79.61%	77.38%	74.31%	77.44%	77.71%
Green Mountain	88.73%	95.71%	95.63%	94.30%	93.00%	94.03%	93.29%	90.99%	88.49%	87.63%
Greensboro	90.32%	94.00%	91.61%	93.33%	90.60%	90.75%	92.56%	93.44%	92.22%	91.51%
Helen Porter	91.71%	90.54%	91.34%	92.75%	96.05%	91.03%	90.25%	89.43%	88.10%	88.60%
Maple Lane	97.18%	96.57%	95.68%	92.69%	94.57%	95.09%	91.60%	91.64%	94.13%	97.36%
Mayo	99.61%	98.93%	99.74%	98.19%	96.57%	98.71%	97.20%	92.97%	97.60%	98.13%
McGirr	85.27%	88.44%	85.16%	96.99%	93.10%	91.40%	90.44%	85.91%	87.33%	78.71%
Mountain View	96.61%	93.35%	93.51%	94.32%	93.04%	91.26%	89.77%	89.85%	89.43%	90.57%
Mt. Ascutney	100.00%	98.53%	99.61%	98.32%	98.71%	100.00%	98.00%	99.10%	95.73%	98.58%
Newport	86.71%	91.07%	90.58%	87.94%	91.07%	92.06%	92.47%	88.77%	89.07%	89.35%
Pine Heights at Brattleboro	88.95%	86.71%	88.39%	88.55%	91.83%	89.44%	90.50%	92.18%	94.38%	86.98%
Pine Knoll	88.49%	86.67%	87.15%	88.76%	82.32%	90.43%	87.67%	88.12%	78.61%	84.03%
Pines at Rutland	96.44%	92.24%	92.10%	92.65%	91.40%	92.72%	91.39%	90.66%	89.36%	94.19%
Prospect	93.70%	100.00%	100.00%	97.24%	99.49%	97.54%	96.67%	98.31%	100.00%	96.47%
Redstone Villa	85.38%	91.44%	93.55%	91.08%	91.79%	94.62%	84.56%	86.24%	88.78%	88.60%
Rowan Court	93.95%	95.35%	94.02%	93.48%	91.93%	95.60%	96.39%	97.61%	95.52%	97.55%
Rutland Healthcare	90.45%	90.03%	90.50%	86.13%	86.14%	86.97%	83.31%	83.95%	86.04%	89.06%
Springfield	83.62%	81.14%	76.63%	77.32%	81.69%	85.83%	81.27%	75.33%	72.39%	78.87%
St. Albans Healthcare	84.25%	84.22%	81.85%	84.27%	80.27%	76.05%	75.91%	75.99%	82.52%	86.51%
St. Johnsbury	88.12%	86.42%	84.19%	82.38%	89.06%	89.77%	88.94%	88.33%	85.48%	88.48%
Starr Farm	94.58%	95.64%	91.70%	93.66%	92.02%	88.28%	88.11%	88.62%	87.27%	90.09%
The Manor	98.52%	97.82%	96.51%	98.12%	98.46%	99.33%	98.66%	98.84%	98.80%	98.97%
Thompson House	95.27%	94.19%	95.12%	94.82%	95.68%	92.95%	91.86%	99.55%	99.84%	97.90%
Union House	94.06%	96.67%	99.12%	95.82%	96.59%	97.07%	98.03%	95.89%	94.47%	97.58%
Vernon Green	97.74%	95.44%	93.66%	98.12%	91.31%	94.41%	94.72%	90.27%	90.67%	99.95%
Veterans Home	86.97%	86.93%	85.26%	84.02%	81.64%	81.61%	83.69%	83.80%	81.98%	83.11%
Woodridge	95.80%	93.01%	91.78%	92.30%	94.58%	94.29%	94.47%	92.03%	93.44%	94.01%
Totals	90.84%	90.55%	89.44%	90.17%	89.84%	89.58%	88.77%	87.78%	88.37%	89.86%

YTD Utilization- Based on Capacity

Division of Rate Setting Schedule of Reported Resident

Between 90% and 85%	Between 90% and 85%	Between 90% and 85%
Between 85% and 80%	Between 85% and 80%	Between 85% and 80%
Between 80% and 50%	Between 80% and 50%	Between 80% and 50%

Nursing Home	8 Aug-10	9 Sep-10	10 Oct-10	11 Nov-10	12 Dec-10	1 Jan-11	2 Feb-11	3 Mar-11	4 Apr-11	5 May-11
Bel-Aire	95.75%	95.83%	93.55%	91.52%	88.86%	88.49%	86.77%	84.75%	84.02%	89.44%
Bennington	85.29%	80.60%	86.42%	87.43%	85.61%	83.32%	85.07%	83.23%	84.13%	83.06%
Berlin	84.33%	86.41%	83.12%	84.00%	73.03%	73.16%	77.81%	79.18%	75.74%	73.16%
Birchwood Terrace	89.40%	93.69%	92.58%	90.02%	91.74%	91.35%	95.69%	92.86%	96.30%	93.50%
Brookside-WRJ	84.26%	89.25%	90.80%	87.81%	87.96%	89.26%	87.05%	84.30%	83.23%	75.40%
Burlington	90.66%	91.67%	89.53%	86.59%	79.57%	87.33%	90.84%	89.71%	88.31%	84.25%
Cedar Hill	92.06%	92.74%	97.19%	98.63%	92.89%	87.26%	97.07%	96.36%	95.47%	91.73%
Centers for Living & Rehab	82.58%	86.00%	79.68%	77.98%	82.65%	85.48%	82.57%	84.82%	83.67%	80.58%
Crescent Manor	95.09%	94.85%	93.66%	92.56%	88.28%	86.88%	85.91%	85.20%	84.70%	85.09%
Derby Green	99.58%	100.00%	99.58%	100.00%	100.00%	99.58%	100.00%	100.00%	100.00%	99.86%
Franklin County Rehab	95.31%	92.29%	92.89%	91.15%	89.31%	91.94%	90.57%	87.45%	91.25%	92.19%
Gifford	99.68%	99.22%	100.00%	100.00%	98.71%	100.00%	100.00%	98.06%	99.22%	100.00%
Gill Odd Fellows	80.47%	83.15%	81.05%	78.45%	82.26%	89.97%	75.70%	72.09%	74.71%	73.21%
Green Mountain	85.06%	83.06%	83.83%	89.36%	91.47%	88.91%	93.69%	91.25%	88.31%	87.01%
Greensboro	94.62%	92.22%	88.49%	92.56%	95.27%	93.76%	87.14%	90.65%	90.67%	96.88%
Helen Porter	92.72%	94.92%	88.57%	85.75%	89.06%	90.08%	96.46%	93.64%	87.97%	87.53%
Maple Lane	97.68%	95.54%	94.68%	93.10%	92.64%	89.91%	94.11%	90.60%	87.84%	88.01%
Mayo	98.45%	99.07%	99.29%	100.00%	97.68%	99.10%	99.43%	96.97%	96.73%	97.74%
McGirr	77.20%	76.22%	76.77%	78.56%	82.69%	86.88%	89.29%	88.71%	83.78%	79.03%
Mountain View	90.98%	89.83%	90.49%	88.38%	90.91%	90.67%	91.23%	90.02%	89.92%	86.32%
Mt. Ascutney	100.00%	99.47%	99.10%	98.80%	100.00%	98.84%	95.86%	97.81%	98.53%	100.00%
Newport	84.71%	84.60%	86.13%	90.80%	90.39%	90.65%	88.57%	89.03%	83.07%	83.48%
Pine Heights at Brattleboro	86.41%	85.46%	87.74%	81.79%	75.24%	73.99%	81.61%	87.90%	82.71%	86.29%
Pine Knoll	86.56%	89.11%	88.06%	83.50%	81.29%	78.71%	80.18%	74.68%	74.78%	64.57%
Pines at Rutland	90.81%	87.92%	87.54%	90.00%	96.05%	96.18%	92.03%	94.19%	93.17%	92.28%
Prospect	95.24%	95.56%	90.48%	90.63%	90.48%	94.78%	94.73%	95.85%	92.22%	92.01%
Redstone Villa	89.14%	93.11%	91.51%	91.89%	87.10%	84.30%	89.52%	93.55%	90.56%	93.01%
Rowan Court	95.60%	97.19%	95.50%	93.26%	94.49%	92.64%	94.42%	91.80%	92.29%	90.46%
Rutland Healthcare	90.35%	86.04%	88.80%	87.32%	85.63%	88.72%	87.37%	84.87%	85.99%	86.83%
Springfield	83.30%	83.89%	83.59%	87.39%	84.47%	84.03%	83.51%	87.13%	88.50%	86.46%
St. Albans Healthcare	85.81%	82.29%	80.39%	75.97%	70.66%	70.15%	73.48%	62.86%	63.97%	71.16%
St. Johnsbury	89.94%	91.21%	91.55%	88.45%	84.96%	87.42%	81.46%	82.58%	81.24%	78.86%
Starr Farm	92.15%	90.64%	92.45%	91.13%	88.77%	88.77%	90.79%	87.94%	90.98%	90.11%
The Manor	99.28%	94.63%	98.25%	96.39%	94.62%	98.21%	96.43%	98.34%	98.84%	96.73%
Thompson House	99.02%	96.67%	94.75%	96.67%	95.12%	94.52%	97.26%	94.37%	94.34%	95.65%
Union House	98.31%	96.29%	96.48%	96.97%	95.60%	93.48%	92.21%	90.18%	93.56%	92.08%
Vernon Green	99.57%	92.06%	87.31%	87.39%	85.38%	87.85%	89.76%	87.96%	92.44%	95.54%
Veterans Home	83.76%	81.15%	81.30%	82.98%	81.98%	82.19%	83.11%	83.14%	85.42%	86.86%
Woodridge	94.39%	96.19%	93.59%	93.66%	91.25%	90.30%	89.31%	88.24%	86.91%	85.28%
Totals	90.03%	89.70%	89.04%	88.27%	87.03%	87.52%	88.24%	87.19%	86.94%	86.02%

YTD Utilization- Based on Capacity

Division of Rate Setting Schedule of Reported Resident

Between 90% and 85%

Between 85% and 80%

Between 80% and 50%

Nursing Home	6 Jun-11	7 Jul-11	8 Aug-11	9 Sep-11	10 Oct-11	11 Nov-11	12 Dec-11	1 Jan-12	2 Feb-12	3 Mar-12
Bel-Aire	92.58%	88.42%	82.77%	92.50%	85.70%	79.09%	88.12%	88.49%	92.01%	84.46%
Bennington	84.27%	84.68%	84.90%	88.93%	84.94%	84.90%	80.06%	84.94%	86.93%	83.65%
Berlin	77.16%	77.12%	79.30%	79.36%	78.52%	79.55%	78.56%	80.39%	80.56%	80.99%
Birchwood Terrace	94.47%	96.42%	96.73%	96.27%	93.21%	93.54%	94.22%	94.22%	99.43%	93.79%
Brookside-WRJ	80.15%	74.29%	79.97%	85.72%	83.63%	80.60%	89.31%	90.27%	81.78%	80.50%
Burlington	86.48%	85.43%	89.61%	91.85%	88.27%	82.51%	87.25%	87.86%	91.60%	86.25%
Cedar Hill	87.35%	89.41%	92.14%	90.26%	91.48%	91.62%	95.78%	90.41%	89.39%	90.32%
Centers for Living & Rehab	80.24%	78.15%	74.22%	77.13%	73.63%	73.49%	69.94%	75.33%	77.15%	77.61%
Crescent Manor	86.85%	88.82%	88.78%	88.48%	86.99%	87.56%	85.84%	86.31%	91.34%	93.01%
Derby Green	98.12%	100.00%	99.16%	98.55%	98.60%	96.23%	98.04%	98.32%	97.30%	99.72%
Franklin County Rehab	89.58%	84.17%	89.72%	90.10%	88.31%	89.43%	93.40%	91.78%	91.49%	90.98%
Gifford	98.67%	100.00%	100.00%	100.00%	98.39%	99.89%	100.00%	93.55%	100.00%	93.55%
Gill Odd Fellows	79.06%	80.58%	81.35%	85.36%	80.01%	77.90%	77.21%	80.08%	71.81%	68.30%
Green Mountain	88.77%	89.39%	90.72%	88.77%	87.05%	86.21%	85.29%	90.63%	90.08%	86.35%
Greensboro	96.22%	97.42%	98.49%	100.00%	96.34%	97.22%	98.06%	95.05%	94.94%	91.29%
Helen Porter	88.98%	86.08%	92.69%	89.78%	92.14%	93.97%	91.21%	92.75%	88.54%	94.90%
Maple Lane	89.20%	85.19%	92.82%	96.01%	95.18%	94.60%	95.82%	95.00%	97.33%	98.55%
Mayo	99.07%	94.58%	95.87%	98.00%	93.68%	93.87%	91.35%	84.39%	80.83%	82.32%
McGirr	77.11%	76.88%	81.72%	87.78%	91.72%	96.11%	98.28%	93.76%	83.79%	70.11%
Mountain View	86.24%	87.91%	88.95%	89.16%	93.57%	93.65%	91.81%	95.12%	93.89%	93.18%
Mt. Ascutney	100.00%	100.00%	97.68%	99.20%	98.84%	98.80%	99.35%	97.29%	98.34%	99.23%
Newport	85.60%	86.26%	89.48%	85.80%	88.97%	85.67%	85.94%	82.77%	77.10%	83.61%
Pine Heights at Brattleboro	85.42%	92.22%	92.58%	96.29%	93.39%	94.29%	98.10%	95.48%	96.64%	99.48%
Pine Knoll	68.06%	73.06%	72.53%	79.67%	77.90%	78.22%	83.92%	80.70%	87.07%	88.71%
Pines at Rutland	91.63%	88.95%	91.56%	91.23%	91.85%	96.21%	96.10%	93.39%	91.23%	91.12%
Prospect	84.76%	83.41%	92.47%	90.63%	90.48%	87.94%	69.43%	30.26%	0.00%	0.00%
Redstone Villa	85.44%	91.29%	89.35%	90.33%	89.35%	90.78%	85.91%	79.25%	78.28%	84.30%
Rowan Court	91.88%	92.78%	96.44%	98.13%	96.37%	93.89%	87.57%	92.34%	92.60%	94.02%
Rutland Healthcare	82.68%	83.32%	81.04%	84.85%	82.22%	84.07%	81.41%	82.66%	81.61%	79.39%
Springfield	84.02%	82.07%	82.54%	82.19%	87.73%	83.40%	81.97%	84.38%	79.68%	80.93%
St. Albans Healthcare	71.13%	72.59%	75.57%	74.06%	76.38%	76.93%	74.81%	73.49%	70.64%	75.43%
St. Johnsbury	81.79%	81.85%	82.87%	84.61%	78.24%	75.30%	80.00%	80.53%	76.99%	75.87%
Starr Farm	87.62%	84.37%	92.49%	89.87%	87.53%	91.07%	87.57%	91.57%	95.52%	94.09%
The Manor	97.69%	99.10%	97.98%	98.01%	97.80%	96.53%	95.74%	97.54%	98.52%	98.52%
Thompson House	96.90%	98.87%	99.25%	97.21%	99.10%	94.11%	92.42%	96.10%	95.99%	98.65%
Union House	93.86%	96.26%	98.39%	88.03%	91.64%	95.15%	96.33%	97.36%	96.94%	98.46%
Vernon Green	95.22%	99.25%	100.05%	98.17%	99.95%	98.44%	98.39%	99.30%	98.05%	97.96%
Veterans Home	88.27%	87.77%	87.15%	85.35%	84.11%	83.24%	81.85%	80.81%	79.52%	80.34%
Woodridge	87.41%	86.17%	87.12%	82.96%	86.84%	86.51%	89.71%	93.78%	91.03%	90.66%
Totals	86.55%	86.39%	87.99%	88.38%	87.61%	87.32%	87.06%	87.69%	87.77%	87.45%

YTD Utilization- Based on Capacity

Division of Rate Setting Schedule of Reported Resident

	Between 90% and 85%									
	Between 85% and 80%					Between 80% and 50%				
	4	5	6	7	8	9	10	11	12	1
Nursing Home	Apr-12	May-12	Jun-12	Jul-12	Aug-12	Sep-12	Oct-12	Nov-12	Dec-12	Jan-13
Bel-Aire	86.97%	92.08%	88.41%	87.24%	77.71%	81.89%	88.86%	84.77%	84.09%	85.19%
Bennington	83.83%	88.32%	85.00%	85.16%	85.55%	82.70%	82.03%	81.93%	80.00%	87.32%
Berlin	83.52%	79.98%	81.32%	79.41%	80.00%	80.73%	80.14%	83.57%	85.15%	82.09%
Birchwood Terrace	94.05%	93.23%	94.75%	95.03%	96.42%	96.62%	94.80%	96.20%	97.89%	96.71%
Brookside-WRJ	93.78%	94.17%	93.08%	95.86%	91.82%	95.07%	95.04%	94.48%	91.57%	91.53%
Burlington	84.84%	89.32%	88.44%	89.99%	92.60%	92.12%	90.12%	92.22%	91.76%	91.99%
Cedar Hill	102.05%	89.25%	86.07%	94.46%	93.88%	90.34%	87.43%	94.96%	89.58%	96.44%
Centers for Living & Rehab	75.18%	73.59%	69.67%	69.18%	68.69%	73.53%	72.80%	71.93%	73.44%	71.57%
Crescent Manor	91.52%	87.49%	87.11%	90.18%	95.20%	89.81%	90.14%	89.04%	87.92%	88.35%
Derby Green	99.71%	99.16%	95.36%	97.19%	97.76%	96.52%	99.02%	100.00%	96.21%	93.55%
Franklin County Rehab	90.52%	88.36%	87.76%	84.98%	84.22%	83.33%	91.68%	91.56%	94.91%	90.47%
Gifford	96.89%	93.55%	98.56%	99.46%	96.77%	100.00%	99.03%	98.67%	98.49%	97.96%
Gill Odd Fellows	64.42%	73.84%	75.22%	74.05%	78.89%	80.58%	84.15%	86.30%	89.97%	86.12%
Green Mountain	86.94%	84.93%	83.97%	89.53%	88.11%	89.27%	89.66%	92.05%	90.46%	92.00%
Greensboro	90.22%	87.42%	86.11%	98.39%	93.33%	90.44%	91.18%	97.33%	96.67%	96.34%
Helen Porter	95.46%	95.27%	95.27%	96.71%	97.08%	92.00%	92.84%	94.63%	89.68%	88.76%
Maple Lane	97.18%	97.73%	99.06%	94.78%	94.96%	95.07%	93.91%	92.54%	95.32%	97.32%
Mayo	82.47%	85.81%	86.40%	87.23%	88.58%	90.00%	87.10%	87.93%	85.55%	96.39%
McGirr	55.33%	0.00%	0.00%	0.00%	0.00%	0.00%	0.00%	0.00%	0.00%	0.00%
Mountain View	96.86%	95.86%	92.53%	94.77%	88.89%	90.89%	95.43%	92.41%	91.53%	89.49%
Mt. Ascutney	99.73%	96.90%	99.07%	98.06%	98.97%	99.33%	97.03%	97.33%	98.84%	101.29%
Newport	88.87%	93.42%	89.73%	95.55%	94.39%	91.00%	88.45%	90.93%	93.03%	91.42%
Pine Heights at Brattleboro	95.54%	90.52%	86.50%	83.83%	87.58%	88.25%	85.44%	91.50%	88.39%	93.10%
Pine Knoll	90.56%	85.91%	85.06%	81.51%	84.62%	91.72%	87.58%	82.22%	88.44%	88.44%
Pines at Rutland	92.51%	91.77%	96.85%	96.95%	94.94%	94.53%	93.14%	93.57%	95.69%	91.51%
Prospect	0.00%	0.00%	0.00%	0.00%	0.00%	0.00%	0.00%	0.00%	0.00%	0.00%
Redstone Villa	76.22%	80.00%	82.89%	79.14%	79.25%	76.89%	81.61%	87.56%	89.35%	79.57%
Rowan Court	93.82%	96.67%	95.66%	91.70%	90.22%	97.26%	96.77%	95.45%	93.85%	96.24%
Rutland Healthcare	82.95%	82.61%	79.59%	79.60%	79.46%	81.79%	79.94%	80.68%	77.58%	79.33%
Springfield	84.97%	87.13%	85.23%	83.08%	82.54%	80.78%	79.95%	86.76%	87.63%	87.44%
St. Albans Healthcare	76.67%	77.25%	77.51%	73.13%	71.89%	76.49%	71.53%	73.19%	72.48%	71.61%
St. Johnsbury	77.00%	71.61%	75.45%	82.84%	84.05%	87.30%	86.63%	85.36%	88.65%	89.35%
Starr Farm	93.71%	92.95%	95.16%	93.20%	93.87%	94.87%	90.84%	92.78%	92.52%	93.16%
The Manor	98.61%	97.09%	99.49%	99.10%	98.88%	97.08%	98.03%	97.04%	99.24%	97.98%
Thompson House	95.35%	95.27%	98.60%	101.58%	95.35%	101.94%	96.70%	97.21%	95.87%	96.17%
Union House	96.14%	96.55%	91.74%	96.26%	97.21%	96.89%	99.41%	96.59%	95.23%	96.11%
Vernon Green	93.78%	91.18%	89.39%	89.46%	86.88%	93.94%	92.42%	96.83%	96.51%	92.74%
Veterans Home	80.94%	79.46%	78.74%	83.68%	80.12%	79.06%	75.91%	74.52%	72.31%	69.87%
Woodridge	90.22%	88.40%	89.41%	87.05%	83.66%	82.77%	86.82%	83.81%	83.85%	86.27%
Totals	88.01%	87.71%	87.36%	87.84%	87.18%	87.97%	87.48%	88.06%	87.90%	87.83%

YTD Utilization- Based on Capacity

Division of Rate Setting Schedule of Reported Resident

	Between 90% and 85%					Between 90% and 85%				
	Between 85% and 80%					Between 85% and 80%				
	Between 80% and 50%					Between 80% and 50%				
Nursing Home	2 Feb-13	3 Mar-13	4 Apr-13	5 May-13	6 Jun-13	7 Jul-13	8 Aug-13	9 Sep-13	10 Oct-13	11 Nov-13
Bel-Aire	84.50%	76.98%	88.64%	89.59%	88.94%	95.38%	94.50%	94.77%	97.51%	97.27%
Bennington	87.36%	88.29%	86.57%	83.23%	82.33%	80.29%	84.74%	85.40%	82.90%	78.90%
Berlin	80.83%	82.50%	79.67%	78.04%	76.88%	81.26%	79.64%	81.80%	77.56%	73.22%
Birchwood Terrace	96.88%	94.96%	97.66%	95.16%	96.16%	92.76%	96.01%	94.42%	92.72%	95.42%
Brookside-WRJ	89.02%	88.83%	90.00%	81.08%	81.84%	87.24%	88.25%	91.89%	95.19%	91.49%
Burlington	91.47%	92.29%	89.95%	86.71%	86.22%	90.91%	90.89%	90.58%	92.40%	90.93%
Cedar Hill	94.41%	98.18%	91.71%	99.92%	100.09%	93.88%	95.12%	95.30%	97.02%	93.42%
Centers for Living & Rehab	73.00%	71.81%	67.84%	63.94%	63.04%	63.78%	66.19%	65.60%	64.09%	62.36%
Crescent Manor	86.75%	83.51%	84.74%	84.73%	84.07%	86.77%	84.01%	88.67%	87.42%	86.48%
Derby Green	94.72%	92.29%	98.84%	96.77%	99.28%	98.46%	99.86%	99.57%	99.02%	99.28%
Franklin County Rehab	90.74%	90.68%	89.22%	92.24%	89.64%	93.60%	95.11%	93.59%	95.61%	92.55%
Gifford	98.45%	96.02%	99.67%	99.14%	99.44%	98.92%	99.25%	98.89%	97.42%	99.11%
Gill Odd Fellows	89.29%	87.10%	83.62%	90.04%	89.64%	88.78%	87.31%	91.88%	89.20%	86.96%
Green Mountain	92.03%	91.91%	92.15%	91.74%	89.13%	88.86%	93.06%	89.27%	92.13%	93.33%
Greensboro	99.17%	90.43%	93.33%	94.84%	93.56%	96.02%	96.34%	95.89%	89.46%	85.00%
Helen Porter	92.72%	91.92%	91.24%	89.55%	88.83%	94.78%	90.14%	90.67%	90.54%	89.65%
Maple Lane	94.22%	93.78%	93.00%	90.10%	91.27%	90.00%	94.64%	92.58%	86.10%	90.89%
Mayo	98.50%	97.74%	98.13%	96.52%	97.40%	97.68%	96.77%	97.00%	98.39%	99.27%
McGirr	0.00%	0.00%	0.00%	0.00%	0.00%	0.00%	0.00%	0.00%	0.00%	0.00%
Mountain View	88.90%	85.50%	84.22%	85.79%	79.18%	83.28%	87.73%	90.59%	88.46%	86.84%
Mt. Ascutney	103.57%	94.06%	68.40%	29.16%	23.33%	17.81%	10.97%	0.00%	0.00%	0.00%
Newport	93.57%	86.13%	81.27%	81.94%	77.87%	82.90%	82.39%	88.27%	86.45%	86.27%
Pine Heights at Brattleboro	91.38%	87.26%	86.33%	89.64%	85.50%	80.00%	91.17%	85.54%	81.69%	83.88%
Pine Knoll	88.81%	88.39%	87.44%	91.83%	86.44%	86.51%	88.71%	86.06%	88.44%	92.72%
Pines at Rutland	88.31%	86.66%	85.17%	91.43%	95.25%	95.10%	97.29%	95.68%	96.67%	96.88%
Prospect	0.00%	0.00%	0.00%	0.00%	0.00%	0.00%	0.00%	0.00%	0.00%	0.00%
Redstone Villa	84.29%	80.00%	80.00%	74.73%	88.89%	90.32%	88.17%	92.00%	93.87%	81.78%
Rowan Court	86.35%	88.94%	89.69%	88.68%	79.83%	75.34%	83.80%	85.97%	78.53%	78.33%
Rutland Healthcare	72.71%	73.14%	74.15%	76.16%	75.37%	73.75%	73.91%	74.36%	73.62%	72.30%
Springfield	86.27%	84.69%	83.14%	79.82%	80.98%	83.11%	88.01%	84.54%	78.37%	80.33%
St. Albans Healthcare	65.47%	66.00%	68.61%	69.09%	69.71%	67.71%	72.54%	73.36%	74.39%	72.87%
St. Johnsbury	83.12%	81.67%	81.21%	84.05%	82.94%	84.55%	87.16%	82.76%	84.63%	82.30%
Starr Farm	93.38%	92.34%	92.56%	94.28%	93.67%	92.99%	93.55%	93.69%	91.83%	92.36%
The Manor	99.55%	98.43%	96.90%	98.84%	99.07%	97.04%	98.07%	98.15%	97.49%	98.80%
Thompson House	96.59%	94.75%	100.78%	96.70%	94.73%	91.30%	93.32%	87.21%	89.87%	96.20%
Union House	95.78%	98.53%	98.86%	100.00%	98.48%	94.35%	93.99%	94.85%	98.24%	96.74%
Vernon Green	93.33%	93.98%	91.67%	95.54%	93.61%	92.85%	94.73%	93.72%	96.34%	94.39%
Veterans Home	71.41%	69.42%	67.95%	68.44%	69.43%	73.08%	74.04%	76.12%	76.93%	76.02%
Woodridge	85.88%	88.02%	84.18%	87.90%	89.76%	92.18%	90.41%	90.92%	88.99%	85.80%
Totals	86.88%	85.89%	85.09%	84.97%	84.16%	84.89%	86.54%	87.20%	86.30%	85.50%

YTD Utilization- Based on Capacity

Division of Rate Setting Schedule of Reported Resident

Nursing Home	12 Dec-13	1 Jan-14	2 Feb-14	3 Mar-14	4 Apr-14	5 May-14	6 Jun-14	7 Jul-14	8 Aug-14	9 Sep-14
Bel-Aire	88.93%	89.59%	95.62%	94.72%	95.15%	95.60%	93.86%	93.11%	93.77%	93.18%
Bennington	80.90%	81.61%	81.21%	81.29%	85.57%	87.10%	84.53%	84.61%	85.03%	85.47%
Berlin	72.32%	72.20%	74.37%	74.90%	72.79%	78.52%	77.21%	78.79%	70.46%	72.29%
Birchwood Terrace	93.73%	97.33%	94.97%	90.48%	96.34%	95.18%	94.58%	92.05%	93.08%	93.45%
Brookside-WRJ	89.50%	91.48%	92.86%	85.99%	89.15%	83.39%	85.37%	84.88%	88.54%	90.05%
Burlington	89.91%	90.09%	91.35%	86.79%	90.19%	88.43%	90.11%	89.09%	87.79%	90.13%
Cedar Hill	97.44%	94.87%	95.24%	96.61%	102.56%	94.29%	94.02%	95.70%	94.04%	90.26%
Centers for Living & Rehab	59.59%	60.32%	64.79%	63.40%	66.69%	70.67%	67.53%	65.94%	67.29%	66.60%
Crescent Manor	84.19%	81.76%	82.86%	80.22%	80.63%	80.29%	82.56%	81.65%	77.99%	81.89%
Derby Green	99.02%	99.58%	99.38%	99.72%	100.00%	100.00%	100.00%	99.72%	99.72%	100.00%
Franklin County Rehab	92.94%	92.24%	92.69%	93.50%	92.03%	92.49%	95.63%	94.46%	92.69%	90.57%
Gifford	96.67%	98.92%	99.05%	97.85%	97.11%	97.85%	99.67%	100.00%	96.67%	103.33%
Gill Odd Fellows	88.43%	88.99%	85.64%	91.30%	93.41%	96.56%	87.61%	86.54%	82.61%	83.91%
Green Mountain	92.49%	91.74%	90.31%	89.70%	86.44%	83.52%	88.36%	91.43%	93.15%	92.15%
Greensboro	83.55%	90.32%	93.81%	94.09%	88.00%	85.59%	84.67%	81.40%	90.75%	87.44%
Helen Porter	93.30%	94.96%	93.23%	85.50%	89.27%	91.61%	92.83%	92.26%	93.95%	91.17%
Maple Lane	92.50%	94.18%	93.61%	94.68%	97.23%	93.50%	93.99%	95.23%	97.27%	94.79%
Mayo	98.26%	98.39%	98.50%	97.87%	96.40%	97.29%	98.27%	99.94%	98.13%	96.07%
McGirr	0.00%	0.00%	0.00%	0.00%	0.00%	0.00%	0.00%	0.00%	0.00%	0.00%
Mountain View	88.30%	91.08%	89.40%	90.12%	86.94%	82.79%	89.18%	92.28%	89.10%	91.29%
Mt. Ascutney	0.00%	0.00%	0.00%	0.00%	0.00%	0.00%	0.00%	0.00%	0.00%	0.00%
Newport	83.81%	79.35%	75.07%	77.29%	82.53%	76.32%	78.20%	79.35%	84.84%	80.53%
Pine Heights at Brattleboro	79.19%	81.98%	83.57%	86.25%	85.42%	89.80%	93.04%	95.81%	94.56%	94.33%
Pine Knoll	94.25%	92.58%	96.13%	91.88%	91.39%	92.74%	87.50%	84.03%	82.74%	86.00%
Pines at Rutland	98.04%	97.88%	94.37%	96.13%	92.99%	92.77%	93.71%	95.54%	97.37%	95.81%
Prospect	0.00%	0.00%	0.00%	0.00%	0.00%	0.00%	0.00%	0.00%	0.00%	0.00%
Redstone Villa	70.65%	74.62%	76.31%	77.96%	82.33%	71.08%	78.89%	85.59%	85.81%	82.33%
Rowan Court	72.24%	70.60%	73.14%	72.38%	71.08%	73.62%	71.22%	73.99%	77.52%	76.15%
Rutland Healthcare	77.89%	79.12%	74.59%	74.17%	74.50%	76.58%	73.74%	75.43%	75.95%	75.91%
Springfield	81.15%	81.69%	81.48%	81.53%	81.37%	79.79%	84.87%	87.98%	83.81%	83.66%
St. Albans Healthcare	66.23%	63.79%	67.70%	69.76%	68.93%	65.58%	68.72%	73.10%	74.42%	71.07%
St. Johnsbury	83.70%	86.19%	84.64%	86.60%	86.39%	85.51%	82.42%	85.60%	82.79%	82.24%
Starr Farm	90.54%	90.97%	91.29%	89.78%	91.67%	92.28%	92.07%	91.23%	88.92%	92.58%
The Manor	95.07%	95.83%	96.63%	97.22%	97.50%	97.45%	98.15%	97.72%	99.42%	97.96%
Thompson House	97.45%	98.87%	97.43%	97.90%	99.15%	94.30%	95.12%	98.50%	99.40%	98.29%
Union House	95.23%	98.09%	98.13%	95.31%	93.41%	94.43%	96.74%	94.57%	94.06%	92.95%
Vernon Green	95.32%	93.01%	93.51%	95.00%	99.11%	95.75%	97.72%	95.75%	98.23%	97.39%
Veterans Home	78.44%	76.70%	77.30%	75.14%	74.37%	73.84%	72.59%	70.23%	70.70%	71.35%
Woodridge	90.36%	85.14%	84.36%	80.48%	79.43%	79.55%	85.95%	84.36%	83.26%	81.18%
Totals	85.15%	85.35%	85.46%	84.53%	85.13%	84.81%	85.52%	85.94%	85.52%	85.42%

YTD Utilization- Based on Capacity

Division of Rate Setting Schedule of Reported Resident

Nursing Home	10 Oct-14	11 Nov-14	12 Dec-14	1 Jan-15	2 Feb-15	3 Mar-15	4 Apr-15	5 May-15	6 Jun-15	7 Jul-15
Bel-Aire	97.29%	96.29%	90.84%	89.59%	91.23%	91.42%	89.09%	87.46%	87.88%	96.92%
Bennington	86.90%	88.93%	88.00%	82.65%	77.46%	80.68%	78.10%	75.71%	76.17%	77.68%
Berlin	71.79%	73.22%	70.19%	73.30%	75.48%	71.77%	71.65%	70.46%	70.28%	72.43%
Birchwood Terrace	94.80%	96.34%	95.50%	98.16%	96.78%	96.84%	94.07%	91.33%	87.64%	89.09%
Brookside-WRJ	92.68%	92.24%	89.41%	89.31%	92.59%	87.24%	84.23%	82.72%	83.33%	84.69%
Burlington	88.56%	88.02%	94.27%	94.52%	92.77%	92.40%	90.85%	91.07%	89.71%	86.64%
Cedar Hill	86.77%	88.38%	92.80%	89.74%	87.09%	89.16%	92.99%	91.40%	88.63%	84.78%
Centers for Living & Rehab	78.66%	77.72%	75.46%	75.11%	77.01%	71.71%	69.87%	75.96%	77.21%	72.01%
Crescent Manor	84.37%	82.59%	82.62%	81.11%	84.37%	85.81%	80.96%	83.05%	78.81%	80.79%
Derby Green	99.30%	99.42%	100.00%	98.74%	97.98%	95.37%	98.41%	99.16%	98.84%	99.58%
Franklin County Rehab	91.99%	91.88%	93.50%	94.00%	93.75%	96.42%	91.46%	90.47%	95.00%	90.57%
Gifford	99.35%	98.33%	98.49%	96.24%	99.17%	94.95%	97.89%	96.24%	95.67%	100.00%
Gill Odd Fellows	81.42%	80.14%	83.17%	81.35%	81.13%	79.03%	75.58%	75.46%	79.13%	82.89%
Green Mountain	89.44%	87.95%	90.10%	94.21%	90.12%	88.20%	85.98%	85.64%	78.86%	76.58%
Greensboro	80.22%	79.67%	76.77%	83.23%	89.29%	86.67%	89.00%	88.39%	96.22%	91.72%
Helen Porter	89.89%	93.46%	93.95%	95.27%	89.83%	90.38%	85.87%	89.55%	87.81%	88.88%
Maple Lane	89.05%	91.22%	92.37%	92.00%	92.35%	89.10%	90.38%	96.41%	96.85%	96.37%
Mayo	97.61%	98.60%	96.06%	89.68%	87.57%	90.32%	97.40%	94.13%	96.60%	97.03%
McGirr	0.00%	0.00%	0.00%	0.00%	0.00%	0.00%	0.00%	0.00%	0.00%	0.00%
Mountain View	91.61%	86.31%	87.16%	90.08%	89.53%	92.16%	88.16%	89.63%	86.52%	86.08%
Mt. Ascutney	0.00%	0.00%	0.00%	0.00%	0.00%	0.00%	0.00%	0.00%	0.00%	0.00%
Newport	85.23%	80.60%	86.45%	90.45%	88.36%	85.48%	84.20%	86.97%	82.27%	86.26%
Pine Heights at Brattleboro	92.14%	88.29%	95.28%	96.17%	96.74%	93.71%	94.17%	84.48%	83.21%	80.44%
Pine Knoll	88.12%	81.06%	87.58%	91.45%	91.13%	93.87%	92.33%	91.02%	83.83%	86.02%
Pines at Rutland	93.75%	90.69%	91.95%	94.50%	95.37%	95.15%	93.20%	90.53%	92.56%	91.77%
Prospect	0.00%	0.00%	0.00%	0.00%	0.00%	0.00%	0.00%	0.00%	0.00%	0.00%
Redstone Villa	67.63%	73.22%	72.15%	74.09%	69.52%	66.45%	60.56%	60.00%	62.89%	63.98%
Rowan Court	74.53%	67.71%	71.40%	69.89%	68.08%	67.27%	69.31%	65.66%	67.01%	68.88%
Rutland Healthcare	77.50%	73.69%	76.58%	75.58%	79.73%	80.83%	78.48%	78.28%	78.81%	78.08%
Springfield	85.58%	85.49%	81.75%	81.40%	85.40%	86.56%	87.29%	82.86%	85.52%	78.37%
St. Albans Healthcare	70.66%	70.14%	68.27%	69.90%	72.20%	72.15%	71.62%	71.16%	70.78%	64.43%
St. Johnsbury	81.91%	79.09%	80.73%	81.03%	76.88%	82.82%	80.55%	82.82%	82.79%	83.61%
Starr Farm	91.81%	90.60%	93.78%	96.30%	94.67%	92.06%	87.80%	84.41%	86.91%	87.25%
The Manor	97.54%	98.61%	99.06%	97.22%	93.06%	98.03%	99.17%	96.86%	97.73%	98.12%
Thompson House	95.50%	99.77%	95.27%	98.35%	99.34%	96.62%	96.82%	95.95%	94.88%	86.27%
Union House	92.89%	88.86%	89.66%	93.26%	94.07%	93.11%	91.97%	75.81%	85.83%	90.76%
Vernon Green	93.92%	97.72%	94.95%	97.04%	96.73%	95.11%	95.56%	91.51%	91.33%	87.96%
Veterans Home	72.36%	70.94%	70.91%	69.42%	68.34%	68.70%	90.85%	90.62%	90.79%	89.13%
Woodridge	78.01%	85.10%	83.58%	81.32%	75.51%	74.47%	77.06%	74.34%	78.37%	78.58%
Totals	85.53%	84.91%	85.45%	85.90%	85.32%	85.02%	84.93%	83.93%	83.98%	83.39%

YTD Utilization- Based on Capacity

Division of Rate Setting Schedule of Reported Resider

	Between 90% and 85%					Between 90% and 85%			
	Between 85% and 80%					Between 85% and 80%			
	Between 80% and 50%					Between 80% and 50%			
	8	9	10	11	12	1	2	3	4
Nursing Home	Aug-15	Sep-15	Oct-15	Nov-15	Dec-15	Jan-16	Feb-16	Mar-16	Apr-16
Bel-Aire	89.30%	90.83%	90.69%	95.38%	94.94%	89.81%	92.48%	81.74%	86.67%
Bennington	82.74%	85.17%	86.42%	80.77%	80.52%	82.32%	78.93%	79.32%	78.93%
Berlin	71.84%	67.90%	72.29%	72.67%	70.33%	70.12%	68.75%	67.92%	65.93%
Birchwood Terrace	88.42%	91.13%	93.46%	91.55%	90.12%	92.88%	88.34%	94.33%	92.82%
Brookside-WRJ	85.46%	94.28%	89.26%	93.13%	89.99%	83.53%	78.23%	79.20%	81.59%
Burlington	88.56%	87.59%	89.91%	91.14%	91.78%	91.30%	86.37%	82.23%	85.71%
Cedar Hill	89.74%	88.97%	91.40%	94.44%	94.46%	95.37%	96.99%	95.04%	95.47%
Centers for Living & Rehab	72.70%	69.97%	68.19%	66.05%	73.80%	73.30%	72.52%	71.09%	75.64%
Crescent Manor	78.85%	77.59%	74.70%	77.00%	78.57%	78.14%	78.20%	80.65%	80.37%
Derby Green	100.00%	100.00%	99.44%	99.28%	98.88%	100.00%	100.00%	96.91%	99.42%
Franklin County Rehab	92.84%	90.68%	88.10%	94.43%	93.80%	93.85%	91.33%	92.44%	95.63%
Gifford	97.96%	100.00%	100.00%	98.00%	99.25%	98.06%	100.00%	97.42%	98.67%
Gill Odd Fellows	83.52%	87.17%	90.18%	87.25%	85.06%	90.25%	91.23%	88.43%	82.10%
Green Mountain	90.76%	84.52%	80.95%	80.55%	85.73%	79.45%	77.85%	80.78%	78.86%
Greensboro	90.54%	97.00%	98.49%	100.00%	96.34%	96.99%	93.45%	95.59%	95.44%
Helen Porter	89.95%	89.49%	92.66%	87.78%	87.77%	90.29%	88.28%	85.68%	84.67%
Maple Lane	97.86%	97.28%	94.37%	92.96%	91.87%	88.91%	87.13%	92.50%	91.03%
Mayo	96.06%	98.73%	99.03%	97.87%	98.13%	98.58%	97.66%	97.87%	98.40%
McGirr	0.00%	0.00%	0.00%	0.00%	0.00%	0.00%	0.00%	0.00%	0.00%
Mountain View	85.08%	82.30%	86.22%	77.47%	82.71%	83.73%	84.64%	86.97%	88.86%
Mt. Ascutney	0.00%	0.00%	0.00%	0.00%	0.00%	0.00%	0.00%	0.00%	0.00%
Newport	95.35%	94.20%	94.84%	96.00%	94.84%	94.84%	91.10%	90.84%	90.27%
Pine Heights at Brattleboro	84.07%	77.17%	82.34%	77.13%	81.13%	82.30%	79.57%	77.66%	69.96%
Pine Knoll	85.48%	91.28%	89.57%	89.50%	90.32%	85.48%	93.39%	92.58%	95.72%
Pines at Rutland	87.82%	88.13%	93.32%	91.25%	88.62%	89.47%	91.67%	91.07%	91.20%
Prospect	0.00%	0.00%	0.00%	0.00%	0.00%	0.00%	0.00%	0.00%	0.00%
Redstone Villa	64.62%	60.22%	57.85%	55.56%	60.54%	59.35%	56.44%	61.83%	57.78%
Rowan Court	70.50%	72.08%	70.40%	70.35%	69.62%	71.47%	71.91%	70.46%	70.59%
Rutland Healthcare	80.41%	79.89%	78.89%	76.72%	72.67%	72.31%	72.13%	73.91%	90.61%
Springfield	86.34%	88.27%	86.56%	85.75%	86.91%	86.37%	86.54%	85.71%	87.94%
St. Albans Healthcare	66.62%	65.33%	69.51%	71.16%	71.30%	69.31%	65.88%	66.09%	66.38%
St. Johnsbury	79.79%	83.85%	80.59%	80.33%	79.21%	77.16%	70.78%	74.63%	78.18%
Starr Farm	91.16%	89.67%	93.70%	90.60%	90.52%	92.43%	91.01%	94.58%	93.53%
The Manor	97.40%	99.63%	99.24%	99.35%	97.40%	97.49%	97.56%	96.68%	98.56%
Thompson House	83.57%	84.65%	88.15%	83.10%	89.12%	85.15%	90.38%	89.72%	86.67%
Union House	91.64%	90.61%	94.21%	93.79%	95.31%	95.09%	93.26%	93.91%	91.52%
Vernon Green	86.61%	87.50%	88.55%	90.00%	89.57%	93.12%	94.43%	95.81%	94.56%
Veterans Home	92.38%	93.36%	90.25%	90.85%	91.16%	91.24%	91.96%	93.13%	92.54%
Woodridge	77.67%	80.98%	84.48%	79.69%	73.50%	80.33%	80.48%	76.20%	76.14%
Totals	84.53%	84.66%	85.57%	84.24%	84.34%	84.51%	83.45%	83.69%	84.49%

YTD Utilization- Based on Capacity

Division of Rate Setting Schedule of Reported Resident

Between 90% and 85%

Between 85% and 80%

Between 80% and 50%

Nursing Home	5 May-16	6 Jun-16	7 Jul-16	8 Aug-16	9 Sep-16	10 Oct-16	11 Nov-16	12 Dec-16	1 Jan-17	2 Feb-17
Bel-Aire	86.95%	80.98%	81.67%	76.54%	75.08%	87.68%	89.32%	90.91%	88.64%	87.74%
Bennington	75.26%	75.23%	77.68%	80.52%	81.03%	82.74%	82.77%	80.87%	86.78%	88.23%
Berlin	64.97%	64.56%	64.81%	63.99%	64.07%	65.80%	67.23%	67.83%	82.72%	77.70%
Birchwood Terrace	91.69%	90.35%	88.31%	93.17%	94.40%	94.87%	92.48%	95.00%	96.42%	89.91%
Brookside-WRJ	80.36%	81.39%	82.04%	86.33%	83.18%	83.05%	79.40%	79.01%	78.19%	76.39%
Burlington	85.15%	85.08%	84.84%	83.90%	88.39%	90.07%	88.84%	88.40%	88.04%	90.05%
Cedar Hill	90.32%	92.91%	96.94%	90.82%	88.46%	93.13%	95.21%	89.41%	86.93%	87.36%
Centers for Living & Rehab	73.75%	72.05%	72.08%	76.65%	77.51%	72.78%	66.31%	71.99%	74.76%	73.05%
Crescent Manor	78.42%	78.74%	79.14%	79.71%	82.85%	82.08%	79.15%	77.38%	72.08%	72.90%
Derby Green	94.11%	97.97%	100.00%	99.02%	98.84%	98.60%	94.64%	97.62%	98.88%	99.84%
Franklin County Rehab	92.39%	91.30%	92.74%	94.05%	94.64%	93.04%	96.35%	90.83%	93.09%	89.56%
Gifford	99.14%	100.00%	100.00%	100.00%	99.22%	100.00%	100.00%	99.35%	94.84%	96.07%
Gill Odd Fellows	85.97%	85.94%	91.30%	87.38%	86.45%	94.53%	89.78%	91.80%	85.83%	84.78%
Green Mountain	79.67%	82.69%	81.18%	81.88%	79.91%	81.04%	81.37%	79.63%	76.18%	76.03%
Greensboro	97.42%	88.00%	87.96%	87.42%	90.44%	88.17%	90.89%	90.97%	90.43%	85.95%
Helen Porter	85.16%	87.21%	85.16%	87.96%	84.48%	86.64%	84.25%	85.44%	87.53%	88.84%
Maple Lane	91.50%	89.86%	88.28%	87.10%	86.10%	88.05%	88.45%	90.96%	95.09%	94.72%
Mayo	98.71%	94.53%	99.10%	97.16%	96.73%	92.52%	93.87%	95.94%	95.42%	90.00%
McGirr	0.00%	0.00%	0.00%	0.00%	0.00%	0.00%	0.00%	0.00%	0.00%	0.00%
Mountain View	88.04%	88.80%	89.47%	87.36%	86.10%	89.67%	88.76%	90.51%	89.32%	85.19%
Mt. Ascutney	0.00%	0.00%	0.00%	0.00%	0.00%	0.00%	0.00%	0.00%	0.00%	0.00%
Newport	91.61%	82.27%	78.71%	78.65%	79.33%	80.58%	82.40%	79.61%	78.84%	73.43%
Pine Heights at Brattleboro	73.15%	79.33%	76.33%	79.11%	81.29%	80.16%	82.25%	88.02%	92.94%	93.75%
Pine Knoll	99.73%	93.50%	92.47%	91.72%	84.11%	81.77%	83.50%	75.00%	73.01%	77.38%
Pines at Rutland	89.52%	92.08%	93.68%	93.14%	91.41%	93.91%	90.21%	91.05%	92.88%	92.23%
Prospect	0.00%	0.00%	0.00%	0.00%	0.00%	0.00%	0.00%	0.00%	0.00%	0.00%
Redstone Villa	52.04%	65.11%	59.78%	69.78%	66.67%	72.80%	73.00%	70.54%	73.87%	72.74%
Rowan Court	72.78%	70.66%	68.38%	67.41%	68.96%	66.47%	68.26%	68.35%	70.97%	71.84%
Rutland Healthcare	90.04%	90.23%	93.55%	88.73%	89.84%	96.43%	94.82%	91.20%	92.14%	94.35%
Springfield	81.47%	84.51%	89.47%	83.59%	84.18%	86.15%	86.31%	81.91%	81.18%	84.00%
St. Albans Healthcare	67.52%	66.87%	69.79%	69.00%	67.19%	67.69%	69.19%	69.12%	84.88%	81.91%
St. Johnsbury	74.46%	78.64%	75.13%	72.73%	75.76%	78.45%	78.82%	76.04%	82.21%	78.50%
Starr Farm	91.25%	88.29%	90.37%	90.00%	88.58%	91.08%	91.33%	90.30%	91.81%	91.19%
The Manor	97.67%	98.52%	96.68%	98.57%	99.86%	97.58%	95.88%	97.76%	95.65%	98.56%
Thompson House	84.92%	90.08%	91.15%	95.72%	91.09%	86.57%	86.12%	85.15%	81.40%	94.35%
Union House	92.45%	94.47%	96.70%	96.19%	97.42%	98.83%	98.86%	99.41%	97.58%	93.18%
Vernon Green	94.03%	85.83%	84.19%	84.84%	86.00%	85.81%	82.00%	82.85%	84.84%	86.67%
Veterans Home	92.38%	94.74%	93.47%	89.80%	90.62%	91.14%	92.74%	92.16%	90.12%	91.18%
Woodridge	73.67%	69.59%	76.05%	74.55%	76.17%	75.63%	81.53%	79.13%	82.46%	84.45%
Totals	83.52%	83.34%	83.90%	83.69%	83.73%	84.76%	84.48%	84.22%	86.19%	85.62%

YTD Utilization- Based on Capacity

Division of Rate Setting Schedule of Reported Resider

Between 90% and 85%

Between 85% and 80%

Between 80% and 50%

	3	4	5	6	7	8
Nursing Home	Mar-17	Apr-17	May-17	Jun-17	Jul-17	Aug-17
Bel-Aire	84.60%	79.85%	77.27%	80.30%	80.21%	82.18%
Bennington	84.51%	82.12%	77.95%	74.36%	73.24%	70.51%
Berlin	84.24%	80.84%	83.76%	83.16%	80.36%	77.39%
Birchwood Terrace	87.81%	86.48%	86.18%	88.08%	84.77%	86.85%
Brookside-WRJ	72.08%	74.33%	70.97%	64.13%	60.62%	57.68%
Burlington	88.97%	89.66%	87.38%	86.93%	87.89%	83.79%
Cedar Hill	87.84%	84.70%	87.51%	88.80%	95.78%	92.06%
Centers for Living & Rehab	72.26%	70.00%	72.06%	60.95%	64.99%	70.60%
Crescent Manor	70.22%	69.93%	70.86%	69.89%	68.75%	70.65%
Derby Green	97.90%	99.42%	93.13%	95.65%	98.46%	97.05%
Franklin County Rehab	94.00%	93.59%	93.55%	90.68%	92.84%	93.20%
Gifford	97.96%	99.78%	100.00%	97.22%	100.00%	100.00%
Gill Odd Fellows	84.43%	82.46%	84.01%	80.65%	77.70%	78.12%
Green Mountain	72.21%	75.21%	76.93%	71.55%	73.44%	71.45%
Greensboro	94.19%	91.67%	96.56%	96.67%	98.71%	97.53%
Helen Porter	87.53%	86.70%	87.16%	89.08%	88.66%	89.49%
Maple Lane	94.78%	92.02%	91.55%	89.01%	91.82%	95.73%
Mayo	88.19%	94.67%	93.55%	94.27%	88.90%	85.94%
McGirr	0.00%	0.00%	0.00%	0.00%	0.00%	0.00%
Mountain View	85.65%	84.24%	84.05%	83.57%	86.61%	81.03%
Mt. Ascutney	0.00%	0.00%	0.00%	0.00%	0.00%	0.00%
Newport	72.84%	62.80%	66.26%	64.13%	67.61%	75.35%
Pine Heights at Brattleboro	90.81%	82.21%	88.15%	91.00%	91.65%	86.73%
Pine Knoll	81.94%	85.78%	75.32%	77.06%	82.10%	81.67%
Pines at Rutland	90.92%	88.35%	87.07%	87.95%	91.77%	87.20%
Prospect	0.00%	0.00%	0.00%	0.00%	0.00%	0.00%
Redstone Villa	62.15%	63.44%	63.01%	64.22%	57.74%	65.59%
Rowan Court	74.90%	76.01%	76.48%	75.52%	76.48%	76.85%
Rutland Healthcare	92.64%	90.36%	91.79%	88.41%	87.47%	92.39%
Springfield	82.29%	83.33%	85.11%	81.46%	83.70%	80.95%
St. Albans Healthcare	84.01%	85.38%	84.81%	83.87%	85.22%	85.08%
St. Johnsbury	81.33%	84.85%	85.57%	88.05%	85.50%	85.17%
Starr Farm	87.40%	85.22%	81.78%	84.20%	85.20%	82.06%
The Manor	96.19%	95.00%	96.42%	96.48%	98.12%	98.25%
Thompson House	91.82%	91.09%	85.82%	94.19%	97.07%	93.77%
Union House	94.65%	92.12%	89.59%	90.53%	94.87%	97.95%
Vernon Green	78.44%	74.22%	79.19%	84.39%	82.90%	86.88%
Veterans Home	91.09%	91.21%	88.21%	88.46%	86.63%	87.79%
Woodridge	85.39%	80.78%	80.71%	81.05%	79.78%	75.86%
Totals	84.99%	83.80%	83.55%	82.92%	83.38%	82.77%

YTD Utilization- Based on Capacity

Division of Rate Setting Schedule of Reported Resider

	9
Nursing Home	Sep-17
Bel-Aire	80.68%
Bennington	72.23%
Berlin	74.35%
Birchwood Terrace	90.63%
Brookside-WRJ	54.53%
Burlington	82.88%
Cedar Hill	94.36%
Centers for Living & Rehab	68.44%
Crescent Manor	68.56%
Derby Green	96.09%
Franklin County Rehab	94.43%
Gifford	100.00%
Gill Odd Fellows	74.20%
Green Mountain	75.21%
Greensboro	98.11%
Helen Porter	89.43%
Maple Lane	97.09%
Mayo	98.13%
McGirr	0.00%
Mountain View	87.66%
Mt. Ascutney	0.00%
Newport	74.87%
Pine Heights at Brattleboro	86.25%
Pine Knoll	82.39%
Pines at Rutland	91.76%
Prospect	0.00%
Redstone Villa	53.00%
Rowan Court	75.07%
Rutland Healthcare	90.06%
Springfield	79.83%
St. Albans Healthcare	81.83%
St. Johnsbury	86.09%
Starr Farm	88.18%
The Manor	95.83%
Thompson House	91.32%
Union House	96.67%
Vernon Green	84.06%
Veterans Home	91.49%
Woodridge	72.77%
Totals	83.22%

YTD Utilization- Based on Capacity

Division of Rate Setting Schedule of Reported Resident

	10	11	12	1	2	3	4	5	6	7
Nursing Home	Oct-17	Nov-17	Dec-17	Jan-18	Feb-18	Mar-18	Apr-18	May-18	Jun-18	Jul-18
Bel-Aire	83.94%	85.00%	78.45%	85.48%	85.15%	81.67%	82.95%	92.30%	91.44%	93.48%
Bennington	73.24%	68.68%	69.48%	71.14%	72.76%	74.05%	75.02%	75.47%	73.70%	75.47%
Berlin	74.59%	81.54%	82.13%	81.88%	81.77%	79.86%	77.30%	82.95%	86.03%	85.69%
Birchwood Terrace	89.67%	88.94%	87.21%	86.87%	86.46%	83.33%	87.41%	84.90%	85.14%	87.52%
Brookside-WRJ	46.03%	11.94%	0.00%	0.00%	0.00%	0.00%	0.00%	0.00%	0.00%	0.00%
Burlington	77.88%	69.74%	77.70%	71.86%	70.01%	80.06%	79.74%	75.70%	75.19%	82.33%
Cedar Hill	87.76%	91.62%	92.14%	91.48%	94.23%	92.22%	86.67%	85.61%	91.28%	93.38%
Centers for Living & Rehab	71.59%	70.69%	72.56%	74.91%	75.63%	72.28%	75.82%	73.47%	74.21%	77.15%
Crescent Manor	62.29%	64.37%	64.09%	62.11%	60.99%	61.25%	61.11%	62.22%	62.26%	68.06%
Derby Green	96.63%	93.91%	89.34%	92.15%	94.41%	98.32%	98.41%	98.46%	100.00%	99.44%
Franklin County Rehab	93.50%	94.64%	93.80%	91.53%	93.58%	93.85%	96.09%	90.73%	93.49%	95.11%
Gifford	98.39%	98.67%	99.89%	97.42%	99.17%	99.89%	99.44%	99.35%	100.00%	99.14%
Gill Odd Fellows	70.27%	84.71%	89.55%	84.78%	88.59%	82.33%	82.54%	82.61%	83.41%	76.51%
Green Mountain	75.96%	71.83%	80.34%	81.57%	85.08%	82.15%	85.75%	80.29%	83.42%	81.93%
Greensboro	90.75%	92.00%	93.55%	93.23%	91.19%	89.14%	91.11%	93.33%	96.44%	92.80%
Helen Porter	86.08%	85.56%	84.36%	85.84%	83.54%	77.82%	79.97%	79.85%	80.35%	81.97%
Maple Lane	97.77%	95.92%	89.91%	88.14%	91.30%	89.96%	92.11%	91.82%	91.46%	89.82%
Mayo	97.35%	95.73%	98.90%	95.48%	92.00%	94.52%	95.93%	90.52%	93.13%	90.97%
McGirr	0.00%	0.00%	0.00%	0.00%	0.00%	0.00%	0.00%	0.00%	0.00%	0.00%
Mountain View	88.04%	88.21%	84.05%	83.83%	87.27%	89.49%	87.09%	87.93%	88.02%	86.04%
Mt. Ascutney	0.00%	0.00%	0.00%	0.00%	0.00%	0.00%	0.00%	0.00%	0.00%	0.00%
Newport	73.74%	74.13%	70.90%	75.03%	80.21%	81.94%	82.00%	84.00%	87.13%	88.58%
Pine Heights at Brattleboro	88.55%	90.88%	87.82%	91.65%	89.51%	82.58%	94.00%	89.19%	89.46%	95.12%
Pine Knoll	80.22%	75.89%	76.83%	77.37%	87.32%	81.18%	82.83%	80.86%	80.22%	83.12%
Pines at Rutland	94.89%	94.69%	91.77%	90.53%	94.31%	91.77%	90.59%	88.65%	84.40%	84.59%
Prospect	0.00%	0.00%	0.00%	0.00%	0.00%	0.00%	0.00%	0.00%	0.00%	0.00%
Redstone Villa	62.90%	66.33%	80.65%	80.32%	84.05%	78.71%	81.89%	74.09%	86.00%	82.26%
Rowan Court	72.08%	71.70%	76.08%	76.01%	80.92%	82.90%	81.18%	81.59%	84.93%	86.79%
Rutland Healthcare	91.54%	89.97%	82.93%	85.56%	88.59%	89.76%	84.56%	86.06%	86.02%	88.22%
Springfield	74.70%	80.35%	77.25%	80.14%	81.03%	80.07%	79.72%	72.85%	68.75%	75.47%
St. Albans Healthcare	80.89%	81.08%	79.92%	80.61%	85.22%	87.44%	86.95%	88.45%	82.26%	81.62%
St. Johnsbury	85.30%	81.99%	82.47%	83.61%	86.33%	86.31%	85.12%	87.75%	84.85%	84.95%
Starr Farm	85.12%	88.78%	80.90%	83.18%	86.62%	84.95%	83.13%	76.34%	73.87%	75.81%
The Manor	96.42%	97.22%	93.86%	93.01%	96.92%	92.07%	93.98%	95.25%	97.92%	95.92%
Thompson House	85.82%	91.63%	97.30%	97.07%	93.94%	96.10%	97.83%	96.40%	97.36%	98.50%
Union House	98.90%	99.32%	90.25%	93.04%	92.13%	95.16%	96.36%	94.72%	98.48%	97.87%
Vernon Green	82.15%	85.33%	89.68%	89.35%	87.74%	88.92%	85.56%	87.74%	86.39%	86.29%
Veterans Home	93.67%	93.44%	92.41%	94.42%	95.60%	93.00%	93.33%	91.34%	90.64%	91.19%
Woodridge	76.62%	75.77%	73.22%	77.19%	77.45%	78.54%	78.95%	80.12%	79.00%	76.47%
Totals	82.52%	81.97%	82.82%	83.37%	84.90%	84.23%	84.62%	83.65%	83.62%	84.67%

YTD Utilization- Based on Capacity

Division of Rate Setting Schedule of Reported Resident

	8	9	10	11	12	1
Nursing Home	Aug-18	Sep-18	Oct-18	Nov-18	Dec-18	Jan-19
Bel-Aire	90.10%	88.56%	86.07%	88.64%	88.78%	87.83%
Bennington	73.48%	72.31%	76.46%	74.98%	74.62%	77.06%
Berlin	84.60%	82.26%	82.27%	78.99%	81.04%	78.32%
Birchwood Terrace	86.42%	86.32%	83.27%	86.27%	87.30%	83.36%
Brookside-WRJ	0.00%	0.00%	0.00%	0.00%	0.00%	0.00%
Burlington	89.99%	87.59%	87.71%	85.29%	75.40%	78.26%
Cedar Hill	91.89%	94.36%	93.80%	87.52%	89.16%	84.20%
Centers for Living & Rehab	74.96%	73.31%	70.35%	71.92%	68.49%	71.51%
Crescent Manor	65.84%	63.33%	61.40%	63.15%	65.59%	67.60%
Derby Green	95.65%	97.83%	94.25%	93.91%	91.02%	93.55%
Franklin County Rehab	93.90%	95.68%	95.01%	93.54%	94.96%	92.64%
Gifford	98.82%	95.67%	97.42%	99.44%	98.82%	99.35%
Gill Odd Fellows	79.94%	78.04%	81.28%	77.68%	72.30%	81.98%
Green Mountain	84.31%	84.52%	85.51%	82.88%	79.58%	80.82%
Greensboro	97.20%	96.78%	93.87%	87.56%	85.59%	86.13%
Helen Porter	80.12%	75.59%	75.33%	79.84%	80.92%	83.84%
Maple Lane	90.82%	93.33%	91.46%	90.28%	93.59%	91.87%
Mayo	89.61%	88.80%	94.26%	91.60%	94.19%	92.71%
McGirr	0.00%	0.00%	0.00%	0.00%	0.00%	0.00%
Mountain View	85.95%	80.68%	83.26%	84.60%	80.79%	81.56%
Mt. Ascutney	0.00%	0.00%	0.00%	0.00%	0.00%	0.00%
Newport	91.61%	86.20%	89.42%	89.07%	90.13%	95.55%
Pine Heights at Brattleboro	94.80%	95.46%	93.47%	88.13%	93.51%	95.24%
Pine Knoll	82.42%	82.44%	85.97%	88.39%	83.76%	84.25%
Pines at Rutland	84.49%	83.81%	84.75%	83.01%	82.50%	81.88%
Prospect	0.00%	0.00%	0.00%	0.00%	0.00%	0.00%
Redstone Villa	76.77%	78.67%	78.71%	76.56%	71.72%	78.82%
Rowan Court	86.32%	85.69%	87.84%	89.76%	90.19%	92.24%
Rutland Healthcare	81.62%	82.69%	77.58%	79.26%	79.17%	79.24%
Springfield	77.59%	77.60%	82.90%	79.31%	81.22%	75.77%
St. Albans Healthcare	84.70%	85.48%	84.11%	82.51%	86.47%	83.52%
St. Johnsbury	85.76%	87.91%	89.80%	90.17%	91.98%	86.02%
Starr Farm	75.25%	82.11%	78.65%	79.16%	79.68%	73.83%
The Manor	96.28%	97.82%	95.97%	98.10%	97.76%	98.52%
Thompson House	97.97%	95.89%	96.40%	93.80%	95.65%	97.90%
Union House	99.34%	99.32%	99.34%	96.52%	95.89%	96.85%
Vernon Green	84.09%	81.89%	84.35%	85.28%	88.17%	88.44%
Veterans Home	91.79%	90.85%	91.86%	91.95%	92.28%	90.89%
Woodridge	76.47%	75.16%	78.35%	81.66%	83.13%	81.95%
Totals	84.53%	83.98%	84.17%	84.04%	83.90%	83.59%

New Order

<u>New Tab #</u>	<u>Old Tab #</u>	<u>Table of Contents</u>
1	1	Total occupancy percentage by month by facility
2	2	Monthly occupancy as a portion of available capacity
3	3	Most recent month's days by facility and by payor group
4	13	Line chart of trends in Private, Medicaid and Medicare Days
5	6-A	Average Number of Vermont Medicaid Residents in Vermont facilities by Month
6	8	Line chart showing trend of annual Medicaid days from SFY 05 to most current 12 month period
7	15	Monthly occupancy by payor group as a portion of actual resident days
8	16	Monthly occupancy showing highest to lowest Medicaid utilization
9	16-A	Monthly occupancy showing highest to lowest Self Pay utilization
10	16-B	Monthly occupancy showing highest to lowest Medicare utilization
11	10-A	Year to Year Comparison of Medicare Days
12	10-B	Cycles in Medicare Days
13	14	Current Number of Beds
14	17	Beds by County
15	5	Bar chart comparing monthly total days from July 05 to present
16	7	Bar chart comparing monthly Medicaid days from July 05 to present
17	10	Bar chart comparing monthly Medicare days from July 05 to present
18	12	Bar chart comparing monthly Private days from July 05 to present
19	12-A	Trend in Private Pay
20	4	Total days by month
21	6	Vermont Medicaid days by month
22	9	Medicare days by month
23	11	Private days by month
24	18	Historical Percentages Showing Each Payor Source as a Percent of Total Days

HOLD DOWN THE CONTROL KEY
TO GO FROM TAB TO TAB

TO BACK UP, HOLD DOWN THE C
UP KEY.

Utilization Statistics- Payor source as a % of Total Capacity

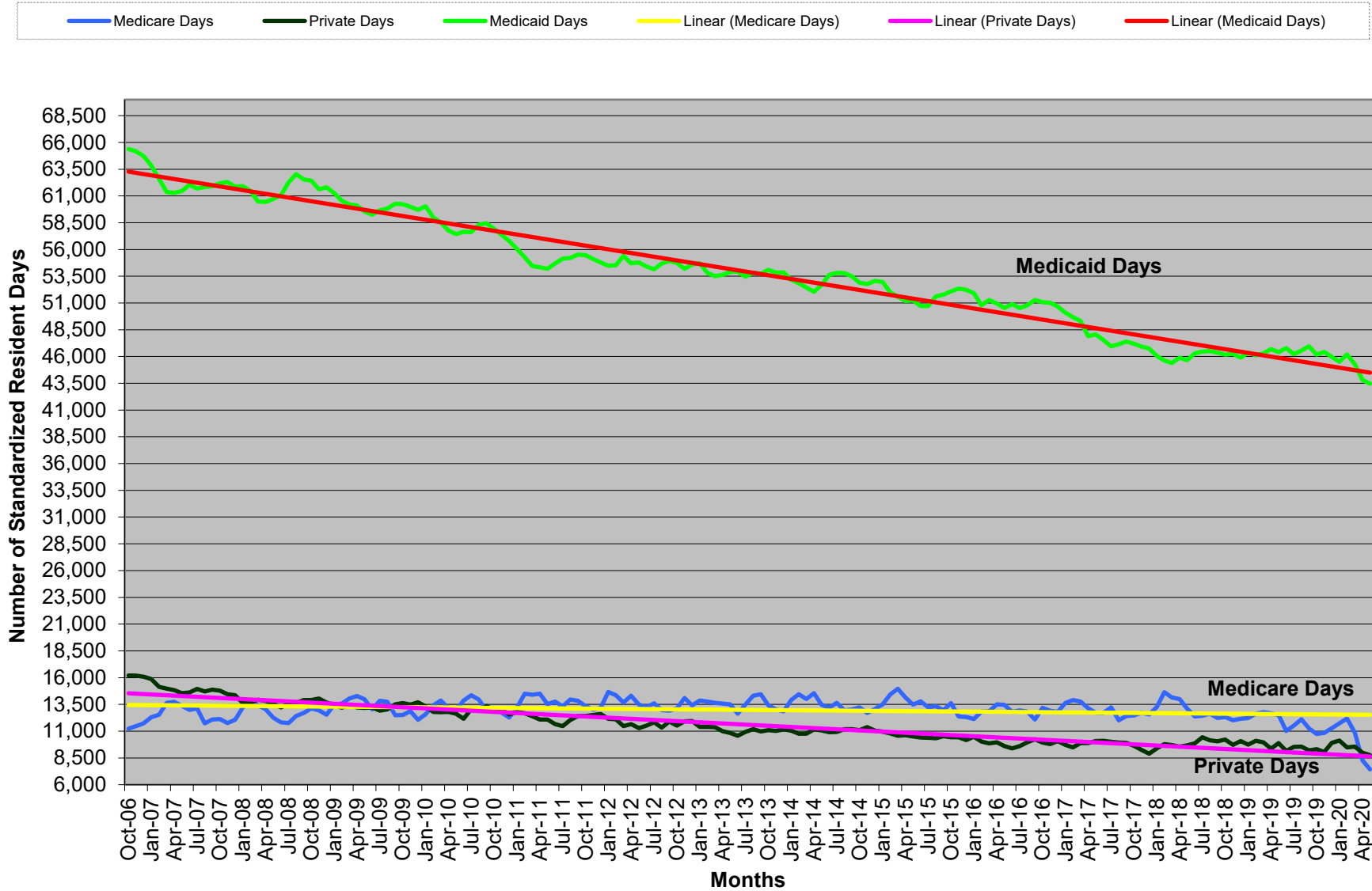
Division of Rate Setting Schedule of Reported Resident Days by the Month
 Month: May 2020

Between 90% and 85%
 Between 85% and 80%
 Between 80% and 50%

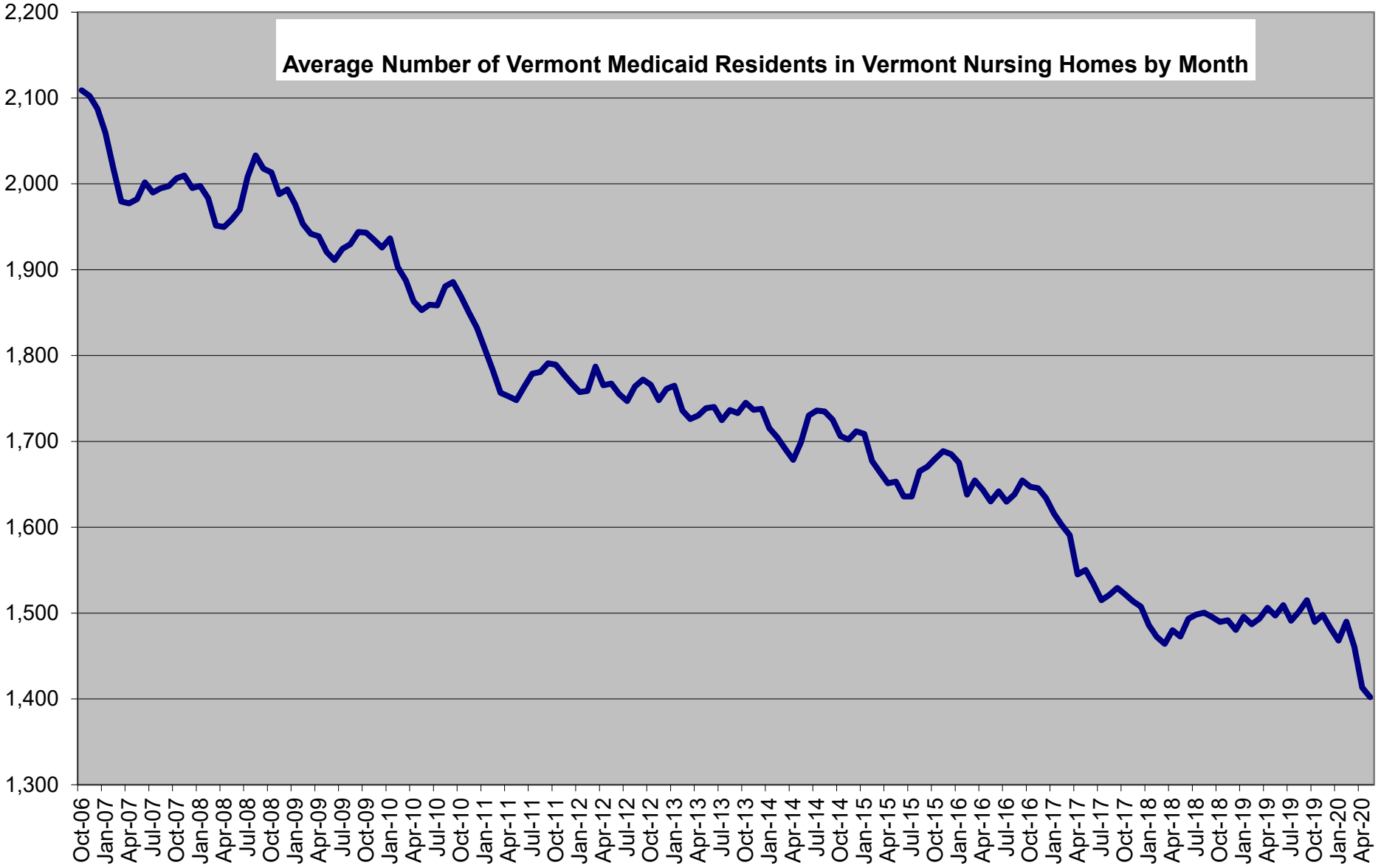
Nursing Home	Census Month Licensed Capacity	Vermont Medicaid	Out of state Medicaid	Self Pay	Medicare	VHAP Managed Care	Other managed Care	VA	Commercial Insurance	Hospice	Other	Total	Check Column	Difference	Ave. No. of Beds Filled This Month	Ave. No. of Empty Beds This Month	Percent of Empty Beds This Month
Bel-Aire	58	50.17%	0.00%	25.86%	6.90%	0.00%	0.00%	0.00%	0.00%	0.00%	0.00%	82.93%	82.93%	0.00%	48	10	17%
Bennington	91	43.78%	9.89%	5.49%	5.64%	0.00%	0.07%	2.80%	0.43%	3.23%	0.00%	71.32%	71.32%	0.00%	65	26	29%
Berlin	115	55.57%	0.00%	5.81%	6.14%	0.00%	0.65%	0.00%	0.00%	4.60%	0.76%	73.52%	73.52%	0.00%	85	30	26%
Birchwood Terrace	144	32.48%	0.00%	5.17%	8.36%	0.00%	0.92%	1.39%	0.00%	6.92%	0.00%	55.24%	55.24%	0.00%	80	64	44%
Brookside-Bradford	Closed	0.00%	0.00%	0.00%	0.00%	0.00%	0.00%	0.00%	0.00%	0.00%	0.00%	0.00%	0.00%	0.00%			
Brookside-WRJ	Closed	0.00%	0.00%	0.00%	0.00%	0.00%	0.00%	0.00%	0.00%	0.00%	0.00%	0.00%	0.00%	0.00%			
Burlington	126	27.55%	0.00%	0.79%	5.56%	0.00%	0.54%	0.00%	0.00%	3.81%	0.00%	38.25%	38.25%	0.00%	48	78	62%
Cedar Hill	39	15.38%	0.00%	54.43%	4.96%	0.00%	0.00%	5.13%	0.00%	7.69%	0.00%	87.59%	87.59%	0.00%	34	5	13%
Centers for Living & Rehab	130	27.87%	5.51%	9.55%	16.67%	0.45%	0.27%	0.00%	0.00%	0.99%	0.00%	61.32%	61.32%	0.00%	80	50	38%
Crescent Manor	90	47.28%	4.44%	4.73%	3.80%	0.00%	1.11%	0.00%	0.00%	2.40%	0.00%	63.76%	63.76%	0.00%	57	33	37%
Derby Green	Closed	0.00%	0.00%	0.00%	0.00%	0.00%	0.00%	0.00%	0.00%	0.00%	0.00%	0.00%	0.00%	0.00%			
Franklin County Rehab	64	41.33%	0.00%	15.63%	13.96%	0.00%	0.00%	0.00%	0.00%	0.00%	0.00%	70.92%	70.92%	0.00%	45	19	30%
Gifford	30	85.81%	0.00%	6.67%	0.00%	0.00%	0.00%	0.00%	0.00%	6.67%	0.00%	99.14%	99.14%	0.00%	30	0	0%
Gill Odd Fellows	46	49.23%	0.00%	11.85%	2.10%	0.00%	0.00%	0.00%	0.00%	6.52%	0.00%	69.71%	69.71%	0.00%	32	14	30%
Green Mountain	73	46.58%	0.00%	16.00%	7.69%	0.00%	0.00%	0.00%	0.00%	0.75%	0.00%	71.01%	71.01%	0.00%	52	21	29%
Greensboro	30	66.67%	0.00%	6.99%	2.26%	0.00%	0.00%	0.00%	0.00%	3.33%	0.00%	79.25%	79.25%	0.00%	24	6	20%
Helen Porter	98	48.35%	0.00%	9.18%	10.17%	0.00%	0.43%	0.00%	0.16%	9.08%	0.00%	77.39%	77.39%	0.00%	76	22	22%
Maple Lane	71	67.83%	0.00%	4.23%	3.09%	0.00%	0.00%	0.00%	0.00%	0.00%	0.00%	75.15%	75.15%	0.00%	53	18	25%
Mayo	50	49.94%	0.00%	31.81%	0.06%	0.00%	0.00%	0.00%	0.00%	6.00%	0.00%	87.81%	87.81%	0.00%	44	6	12%
McGirr	Closed	0.00%	0.00%	0.00%	0.00%	0.00%	0.00%	0.00%	0.00%	0.00%	0.00%	0.00%	0.00%	0.00%			
Morrisville Center	Closed	0.00%	0.00%	0.00%	0.00%	0.00%	0.00%	0.00%	0.00%	0.00%	0.00%	0.00%	0.00%	0.00%			
Mountain View	158	48.90%	0.00%	6.47%	9.80%	0.00%	0.16%	0.00%	0.20%	9.96%	0.00%	75.50%	75.50%	0.00%	119	39	25%
Mt. Ascutney	Closed	0.00%	0.00%	0.00%	0.00%	0.00%	0.00%	0.00%	0.00%	0.00%	0.00%	0.00%	0.00%	0.00%			
Newport	50	58.19%	0.00%	6.45%	2.58%	0.00%	0.00%	0.00%	0.00%	0.00%	0.00%	67.23%	67.23%	0.00%	34	16	32%
Pine Heights at Brattleboro	80	44.40%	0.00%	10.89%	16.41%	0.00%	3.67%	0.00%	0.00%	1.73%	0.20%	77.30%	77.30%	0.00%	62	18	23%
Pine Knoll	60	63.60%	0.00%	5.00%	5.65%	0.00%	0.00%	0.00%	0.00%	0.00%	0.00%	74.25%	74.25%	0.00%	45	15	25%
Pines at Rutland	125	50.45%	0.00%	4.49%	20.80%	0.00%	0.00%	3.48%	2.53%	5.06%	0.00%	86.81%	86.81%	0.00%	109	16	13%
Prospect	Closed	0.00%	0.00%	0.00%	0.00%	0.00%	0.00%	0.00%	0.00%	0.00%	0.00%	0.00%	0.00%	0.00%			
Redstone Villa	30	38.92%	0.00%	4.62%	10.86%	0.00%	0.00%	0.00%	0.00%	0.00%	0.00%	54.41%	54.41%	0.00%	16	14	47%
Rowan Court	96	59.34%	0.00%	9.38%	11.86%	0.00%	0.10%	0.00%	0.00%	3.26%	0.00%	83.94%	83.94%	0.00%	81	15	16%
Rutland Healthcare	103	59.32%	0.00%	2.91%	5.10%	0.00%	0.00%	0.00%	0.63%	7.89%	0.97%	76.82%	76.82%	0.00%	79	24	23%
Sager	Closed	0.00%	0.00%	0.00%	0.00%	0.00%	0.00%	0.00%	0.00%	0.00%	0.00%	0.00%	0.00%	0.00%			
Springfield	96	43.75%	0.00%	5.38%	9.31%	0.00%	0.13%	1.04%	0.00%	9.78%	0.00%	69.39%	69.39%	0.00%	67	29	30%
St. Albans Healthcare	93	50.64%	0.00%	4.30%	3.47%	0.00%	0.66%	7.53%	0.00%	2.15%	0.00%	68.75%	68.75%	0.00%	64	29	31%
St. Johnsbury	99	46.40%	0.00%	9.97%	7.69%	0.00%	0.91%	5.18%	0.13%	5.77%	0.36%	76.41%	76.41%	0.00%	76	23	23%
Starr Farm	150	66.15%	0.00%	-2.95%	15.25%	0.00%	0.00%	3.33%	4.90%	0.45%	0.00%	87.14%	87.14%	0.00%	131	19	13%
Stratton House	Closed	0.00%	0.00%	0.00%	0.00%	0.00%	0.00%	0.00%	0.00%	0.00%	0.00%	0.00%	0.00%	0.00%			
The Manor	72	54.57%	0.00%	18.86%	6.41%	0.00%	0.00%	0.00%	0.00%	5.96%	0.00%	85.80%	85.80%	0.00%	62	10	14%
Thompson House	43	68.42%	0.00%	22.96%	1.65%	0.00%	0.00%	0.00%	0.00%	0.00%	0.00%	93.02%	93.02%	0.00%	40	3	7%
Union House	44	75.00%	0.00%	11.36%	0.00%	0.00%	0.00%	6.82%	0.00%	0.00%	0.00%	93.18%	93.18%	0.00%	41	3	7%
Vernon Green	60	46.29%	0.00%	24.30%	5.70%	0.00%	0.00%	0.00%	0.00%	0.00%	0.00%	76.29%	76.29%	0.00%	46	14	23%
Veterans Home	130	37.97%	3.08%	17.47%	2.03%	0.00%	0.00%	23.82%	0.00%	1.54%	0.00%	85.91%	85.91%	0.00%	112	18	14%
Woodridge	153	44.21%	0.00%	17.04%	10.44%	0.00%	0.00%	1.86%	0.57%	0.00%	0.00%	74.11%	74.11%	0.00%	113	40	26%
Totals	2,897	51.67%	1.23%	10.61%	13.44%	0.03%	0.85%	2.17%	0.26%	4.07%	0.00%	84.33%			2,150	747	26%

Ave. No. of Empty Beds This M

Standardized Days from 10/1/06 to 5/31/20

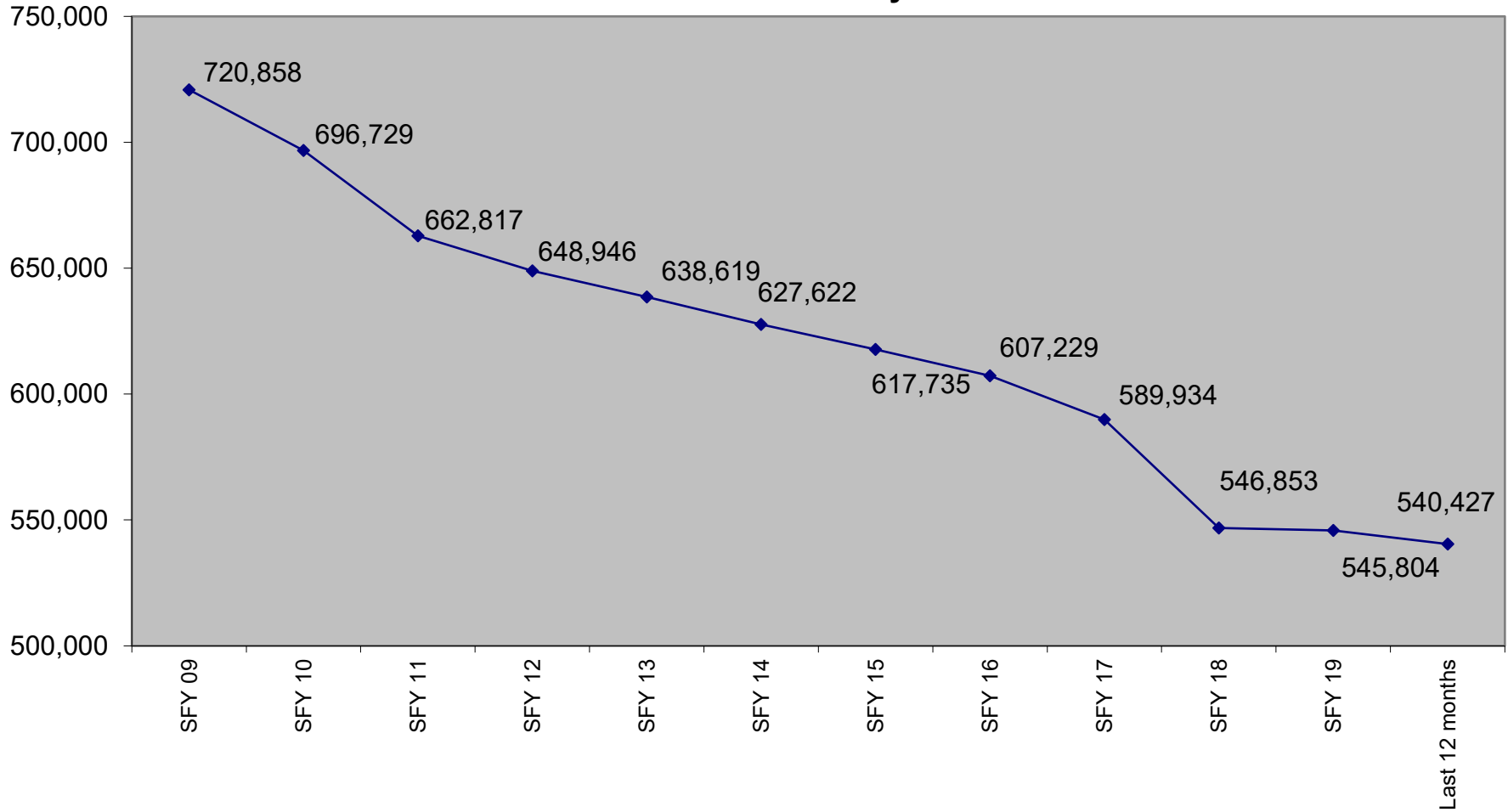


Average Number of Vermont Medicaid Residents in Vermont Nursing Homes by Month



Month

Annual Medicaid Days



Annual Medicaid Days from SFY 2009 to Present

Utilization Statistics- Payor source as a Percentage of Reported Days

Month: May 2020	HIGHLIGHTS	Over 70% Medicaid		Over 15% Private Medicare		Medicaid for Children and Adults (formerly Vt Health Access Managed Care)	Other managed Care	VA	Commercial Insurance	Hospice	Other	Total
		Reported Days	Vermont medicaid	Out of state medicaid	Self Pay							
Nursing Home												
Bel-Aire	1,491	60%	0%	31%	8%	0%	0%	0%	0%	0%	0%	100%
Bennington	2,012	61%	14%	8%	8%	0%	0%	4%	1%	5%	0%	100%
Berlin	2,621	76%	0%	8%	8%	0%	1%	0%	0%	6%	1%	100%
Birchwood Terrace	2,466	59%	0%	9%	15%	0%	2%	3%	0%	13%	0%	100%
Burlington	1,494	72%	0%	2%	15%	0%	1%	0%	0%	10%	0%	100%
Cedar Hill	1,059	18%	0%	62%	6%	0%	0%	6%	0%	9%	0%	100%
Centers for Living & Rehab	2,471	45%	9%	16%	27%	1%	0%	0%	0%	2%	0%	100%
Crescent Manor	1,779	74%	7%	7%	6%	0%	2%	0%	0%	4%	0%	100%
Franklin County Rehab	1,407	58%	0%	22%	20%	0%	0%	0%	0%	0%	0%	100%
Gifford	922	87%	0%	7%	0%	0%	0%	0%	0%	7%	0%	100%
Gill Odd Fellows	994	71%	0%	17%	3%	0%	0%	0%	0%	9%	0%	100%
Green Mountain	1,607	66%	0%	23%	11%	0%	0%	0%	0%	1%	0%	100%
Greensboro	737	84%	0%	9%	3%	0%	0%	0%	0%	4%	0%	100%
Helen Porter	2,351	62%	0%	12%	13%	0%	1%	0%	0%	12%	0%	100%
Maple Lane	1,654	90%	0%	6%	4%	0%	0%	0%	0%	0%	0%	100%
Mayo	1,361	57%	0%	36%	0%	0%	0%	0%	0%	7%	0%	100%
Mountain View	3,698	65%	0%	9%	13%	0%	0%	0%	0%	13%	0%	100%
Newport	1,042	87%	0%	10%	4%	0%	0%	0%	0%	0%	0%	100%
Pine Heights at Brattleboro	1,917	57%	0%	14%	21%	0%	5%	0%	0%	2%	0%	100%
Pine Knoll	1,381	86%	0%	7%	8%	0%	0%	0%	0%	0%	0%	100%
Pines at Rutland	3,364	58%	0%	5%	24%	0%	0%	4%	3%	6%	0%	100%
Redstone Villa	506	72%	0%	8%	20%	0%	0%	0%	0%	0%	0%	100%
Rowan Court	2,498	71%	0%	11%	14%	0%	0%	0%	0%	4%	0%	100%
Rutland Healthcare	2,453	77%	0%	4%	7%	0%	0%	0%	1%	10%	1%	100%
Springfield	2,065	63%	0%	8%	13%	0%	0%	2%	0%	14%	0%	100%
St. Albans Healthcare	1,982	74%	0%	6%	5%	0%	1%	11%	0%	3%	0%	100%
St. Johnsbury	2,345	61%	0%	13%	10%	0%	1%	7%	0%	8%	0%	100%
Starr Farm	4,052	76%	0%	-3%	17%	0%	0%	4%	6%	1%	0%	100%
The Manor	1,915	64%	0%	22%	7%	0%	0%	0%	0%	7%	0%	100%
Thompson House	1,240	74%	0%	25%	2%	0%	0%	0%	0%	0%	0%	100%
Union House	1,271	80%	0%	12%	0%	0%	0%	7%	0%	0%	0%	100%
Vernon Green	1,419	61%	0%	32%	7%	0%	0%	0%	0%	0%	0%	100%
Veterans Home	3,462	44%	4%	20%	2%	0%	0%	28%	0%	2%	0%	100%
Woodridge	3,515	60%	0%	23%	14%	0%	0%	3%	1%	0%	0%	100%
Total	66,551	65%	1%	13%	11%	0.0%	0.4%	3.1%	0.6%	5.0%	0.1%	100%

Proofing

65% Medicaid
11% Medicare
13% Self Pay

Utilization Statistics- Payor source as a Percentage of Reported Days

Sorted by Percentage of Medicaid Utilization

Nursing Home	Reported Days	HIGHLIGHTS		Out of state Medicaid	Self Pay	Medicare	Medicaid for Children and Adults (formerly Vt Health Access Managed Care)	Other managed Care	VA	Commercial Insurance	Hospice	Other	Total
		Over 70% Medicaid											
Maple Lane	1,654	90%		0%	6%	4%	0%	0%	0%	0%	0%	0%	100%
Newport	1,042	87%		0%	10%	4%	0%	0%	0%	0%	0%	0%	100%
Gifford	922	87%		0%	7%	0%	0%	0%	0%	0%	7%	0%	100%
Pine Knoll	1,381	86%		0%	7%	8%	0%	0%	0%	0%	0%	0%	100%
Greensboro	737	84%		0%	9%	3%	0%	0%	0%	0%	4%	0%	100%
Union House	1,271	80%		0%	12%	0%	0%	0%	7%	0%	0%	0%	100%
Rutland Healthcare	2,453	77%		0%	4%	7%	0%	0%	0%	1%	10%	1%	100%
Starr Farm	4,052	76%		0%	-3%	17%	0%	0%	4%	6%	1%	0%	100%
Berlin	2,621	76%		0%	8%	8%	0%	1%	0%	0%	6%	1%	100%
Crescent Manor	1,779	74%		7%	7%	6%	0%	2%	0%	0%	4%	0%	100%
St. Albans Healthcare	1,982	74%		0%	6%	5%	0%	1%	11%	0%	3%	0%	100%
Thompson House	1,240	74%		0%	25%	2%	0%	0%	0%	0%	0%	0%	100%
Burlington	1,494	72%		0%	2%	15%	0%	1%	0%	0%	10%	0%	100%
Redstone Villa	506	72%		0%	8%	20%	0%	0%	0%	0%	0%	0%	100%
Rowan Court	2,498	71%		0%	11%	14%	0%	0%	0%	0%	4%	0%	100%
Gill Odd Fellows	994	71%		0%	17%	3%	0%	0%	0%	0%	9%	0%	100%
Green Mountain	1,607	66%		0%	23%	11%	0%	0%	0%	0%	1%	0%	100%
Mountain View	3,698	65%		0%	9%	13%	0%	0%	0%	0%	13%	0%	100%
The Manor	1,915	64%		0%	22%	7%	0%	0%	0%	0%	7%	0%	100%
Springfield	2,065	63%		0%	8%	13%	0%	0%	2%	0%	14%	0%	100%
Helen Porter	2,351	62%		0%	12%	13%	0%	1%	0%	0%	12%	0%	100%
Bennington	2,012	61%	14%	8%	8%	8%	0%	0%	4%	1%	5%	0%	100%
St. Johnsbury	2,345	61%	0%	13%	10%	10%	0%	1%	7%	0%	8%	0%	100%
Vernon Green	1,419	61%	0%	32%	7%	7%	0%	0%	0%	0%	0%	0%	100%
Bel-Aire	1,491	60%	0%	31%	8%	8%	0%	0%	0%	0%	0%	0%	100%
Woodridge	3,515	60%	0%	23%	14%	14%	0%	0%	3%	1%	0%	0%	100%
Birchwood Terrace	2,466	59%	0%	9%	15%	15%	0%	2%	3%	0%	13%	0%	100%
Franklin County Rehab	1,407	58%	0%	22%	20%	20%	0%	0%	0%	0%	0%	0%	100%
Pines at Rutland	3,364	58%	0%	5%	24%	24%	0%	0%	4%	3%	6%	0%	100%
Pine Heights at Brattleboro	1,917	57%	0%	14%	21%	21%	0%	5%	0%	0%	2%	0%	100%
Mayo	1,361	57%	0%	36%	0%	0%	0%	0%	0%	0%	7%	0%	100%
Centers for Living & Rehab	2,471	45%	9%	16%	16%	27%	1%	0%	0%	0%	2%	0%	100%
Veterans Home	3,462	44%	4%	20%	2%	2%	0%	0%	28%	0%	2%	0%	100%
Cedar Hill	1,059	18%	0%	62%	6%	6%	0%	0%	6%	0%	9%	0%	100%
Total	66,551	65%	1%	13%	11%	11%	0%	0%	3%	1%	5%	0%	100%

Utilization Statistics- Payor source as a Percentage of Reported Days

Sorted by Percentage Self Pay Utilization

Month: May 2020

HIGHLIGHTS

Over 15%
Self Pay

Nursing Home	Reported Days	Vermont Medicaid	Out of state Medicaid	Self Pay	Medicare	Medicaid for Children and Adults (formerly Vt Health Access Managed Care)	Other managed Care	VA	Commercial Insurance	Hospice	Other	Total
Cedar Hill	1,059	18%	0%	62%	6%	0%	0%	6%	0%	9%	0%	100%
Mayo	1,361	57%	0%	36%	0%	0%	0%	0%	0%	7%	0%	100%
Vernon Green	1,419	61%	0%	32%	7%	0%	0%	0%	0%	0%	0%	100%
Bel-Aire	1,491	60%	0%	31%	8%	0%	0%	0%	0%	0%	0%	100%
Thompson House	1,240	74%	0%	25%	2%	0%	0%	0%	0%	0%	0%	100%
Woodridge	3,515	60%	0%	23%	14%	0%	0%	3%	1%	0%	0%	100%
Green Mountain	1,607	66%	0%	23%	11%	0%	0%	0%	0%	1%	0%	100%
Franklin County Rehab	1,407	58%	0%	22%	20%	0%	0%	0%	0%	0%	0%	100%
The Manor	1,915	64%	0%	22%	7%	0%	0%	0%	0%	7%	0%	100%
Veterans Home	3,462	44%	4%	20%	2%	0%	0%	28%	0%	2%	0%	100%
Gill Odd Fellows	994	71%	0%	17%	3%	0%	0%	0%	0%	9%	0%	100%
Centers for Living & Rehab	2,471	45%	9%	16%	27%	1%	0%	0%	0%	2%	0%	100%
Pine Heights at Brattleboro	1,917	57%	0%	14%	21%	0%	5%	0%	0%	2%	0%	100%
St. Johnsbury	2,345	61%	0%	13%	10%	0%	1%	7%	0%	8%	0%	100%
Union House	1,271	80%	0%	12%	0%	0%	0%	7%	0%	0%	0%	100%
Helen Porter	2,351	62%	0%	12%	13%	0%	1%	0%	0%	12%	0%	100%
Rowan Court	2,498	71%	0%	11%	14%	0%	0%	0%	0%	4%	0%	100%
Newport	1,042	87%	0%	10%	4%	0%	0%	0%	0%	0%	0%	100%
Birchwood Terrace	2,466	59%	0%	9%	15%	0%	2%	3%	0%	13%	0%	100%
Greensboro	737	84%	0%	9%	3%	0%	0%	0%	0%	4%	0%	100%
Mountain View	3,698	65%	0%	9%	13%	0%	0%	0%	0%	13%	0%	100%
Redstone Villa	506	72%	0%	8%	20%	0%	0%	0%	0%	0%	0%	100%
Berlin	2,621	76%	0%	8%	8%	0%	1%	0%	0%	6%	1%	100%
Springfield	2,065	63%	0%	8%	13%	0%	0%	2%	0%	14%	0%	100%
Bennington	2,012	61%	14%	8%	8%	0%	0%	4%	1%	5%	0%	100%
Crescent Manor	1,779	74%	7%	7%	6%	0%	2%	0%	0%	4%	0%	100%
Pine Knoll	1,381	86%	0%	7%	8%	0%	0%	0%	0%	0%	0%	100%
Gifford	922	87%	0%	6.7%	0%	0%	0%	0%	0%	7%	0%	100%
St. Albans Healthcare	1,982	74%	0%	6%	5%	0%	1%	11%	0%	3%	0%	100%
Maple Lane	1,654	90%	0%	6%	4%	0%	0%	0%	0%	0%	0%	100%
Pines at Rutland	3,364	58%	0%	5%	24%	0%	0%	4%	3%	6%	0%	100%
Rutland Healthcare	2,453	77%	0%	4%	7%	0%	0%	0%	1%	10%	1%	100%
Burlington	1,494	72%	0%	2%	15%	0%	1%	0%	0%	10%	0%	100%
Starr Farm	4,052	76%	0%	-3%	17%	0%	0%	4%	6%	1%	0%	100%
Total	66,551	65%	1%	13%	11%	0%	0%	3%	1%	5%	0%	100%

Utilization Statistics- Payor source as a Percentage of Reported Days

Sorted by Percentage Medicare Utilization

Month: May 2020

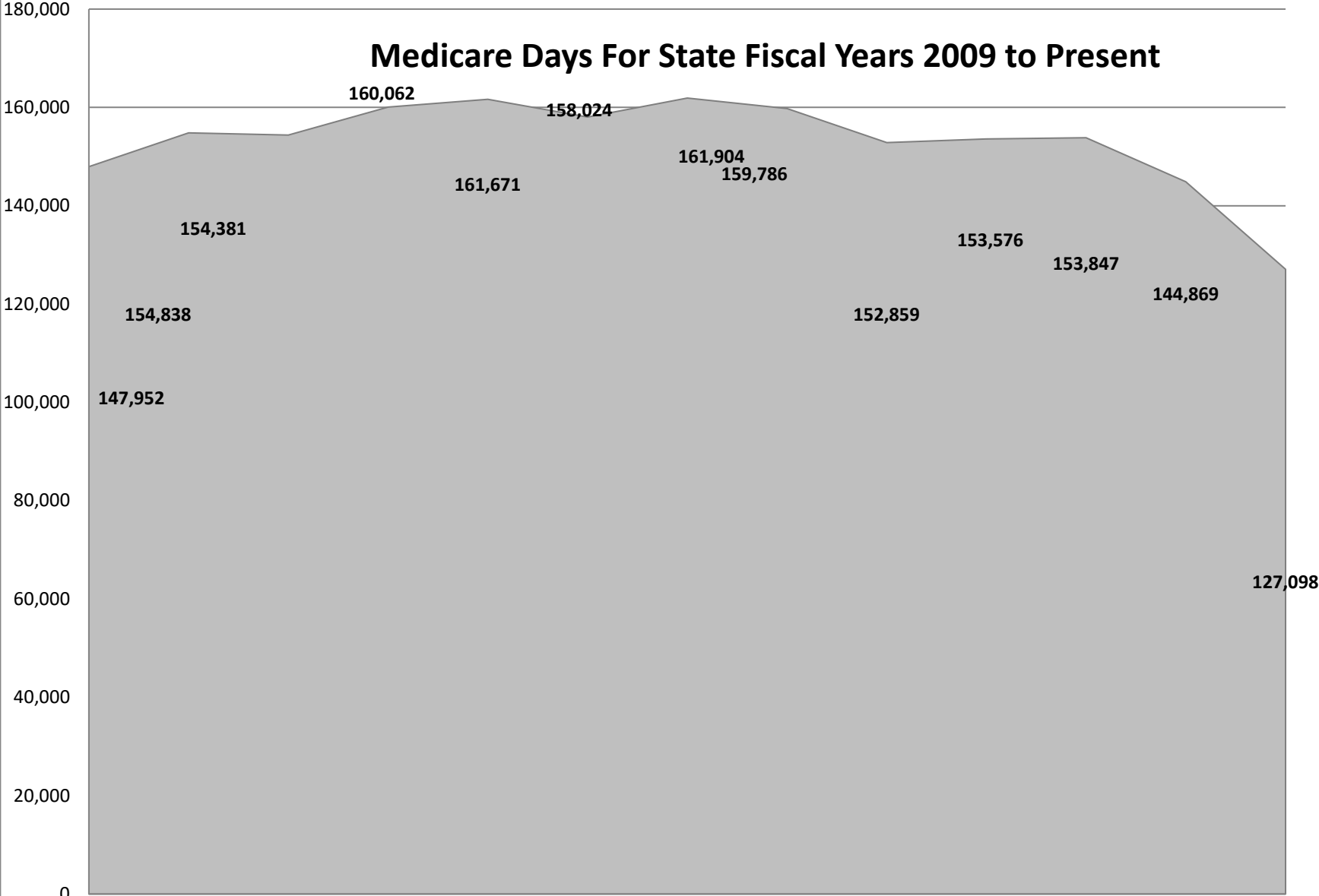
HIGHLIGHTS

Over 15% Medicare

Nursing Home	Reported Days	Vermont Medicaid	Out of state Medicaid	Self Pay	Medicare	Medicaid for Children and Adults (formerly Vt Health Access Managed Care)	Other managed Care	VA	Commercial Insurance	Hospice	Other	Total
Centers for Living & Rehab	2,471	45%	9%	16%	27%	1%	0%	0%	0%	2%	0%	100%
Pines at Rutland	3,364	58%	0%	5%	24%	0%	0%	4%	3%	6%	0%	100%
Pine Heights at Brattleboro	1,917	57%	0%	14%	21%	0%	5%	0%	0%	2%	0%	100%
Redstone Villa	506	72%	0%	8%	20%	0%	0%	0%	0%	0%	0%	100%
Franklin County Rehab	1,407	58%	0%	22%	20%	0%	0%	0%	0%	0%	0%	100%
Starr Farm	4,052	76%	0%	-3%	17%	0%	0%	4%	6%	1%	0%	100%
Birchwood Terrace	2,466	59%	0%	9%	15%	0%	2%	3%	0%	13%	0%	100%
Burlington	1,494	72%	0%	2%	14.5%	0%	1%	0%	0%	10%	0%	100%
Rowan Court	2,498	71%	0%	11%	14%	0%	0%	0%	0%	4%	0%	100%
Woodridge	3,515	60%	0%	23%	14%	0%	0%	3%	1%	0%	0%	100%
Springfield	2,065	63%	0%	8%	13%	0%	0%	2%	0%	14%	0%	100%
Helen Porter	2,351	62%	0%	12%	13%	0%	1%	0%	0%	12%	0%	100%
Mountain View	3,698	65%	0%	9%	13%	0%	0%	0%	0%	13%	0%	100%
Green Mountain	1,607	66%	0%	23%	11%	0%	0%	0%	0%	1%	0%	100%
St. Johnsbury	2,345	61%	0%	13%	10%	0%	1%	7%	0%	8%	0%	100%
Berlin	2,621	76%	0%	8%	8%	0%	1%	0%	0%	6%	1%	100%
Bel-Aire	1,491	60%	0%	31%	8%	0%	0%	0%	0%	0%	0%	100%
Bennington	2,012	61%	14%	8%	8%	0%	0%	4%	1%	5%	0%	100%
Pine Knoll	1,381	86%	0%	7%	8%	0%	0%	0%	0%	0%	0%	100%
Vernon Green	1,419	61%	0%	32%	7%	0%	0%	0%	0%	0%	0%	100%
The Manor	1,915	64%	0%	22%	7%	0%	0%	0%	0%	7%	0%	100%
Rutland Healthcare	2,453	77%	0%	4%	7%	0%	0%	0%	1%	10%	1%	100%
Crescent Manor	1,779	74%	7%	7%	6%	0%	2%	0%	0%	4%	0%	100%
Cedar Hill	1,059	18%	0%	62%	6%	0%	0%	6%	0%	9%	0%	100%
St. Albans Healthcare	1,982	74%	0%	6%	5%	0%	1%	11%	0%	3%	0%	100%
Maple Lane	1,654	90%	0%	6%	4%	0%	0%	0%	0%	0%	0%	100%
Newport	1,042	87%	0%	10%	4%	0%	0%	0%	0%	0%	0%	100%
Gill Odd Fellows	994	71%	0%	17%	3%	0%	0%	0%	0%	9%	0%	100%
Greensboro	737	84%	0%	9%	3%	0%	0%	0%	0%	4%	0%	100%
Veterans Home	3,462	44%	4%	20%	2%	0%	0%	28%	0%	2%	0%	100%
Thompson House	1,240	74%	0%	25%	2%	0%	0%	0%	0%	0%	0%	100%
Mayo	1,361	57%	0%	36%	0%	0%	0%	0%	0%	7%	0%	100%
Union House	1,271	80%	0%	12%	0%	0%	0%	7%	0%	0%	0%	100%
Gifford	922	87%	0%	7%	0%	0%	0%	0%	0%	7%	0%	100%
Total	66,551	65%	1%	13%	11%	0%	0%	3%	1%	5%	0%	100%

Days in month

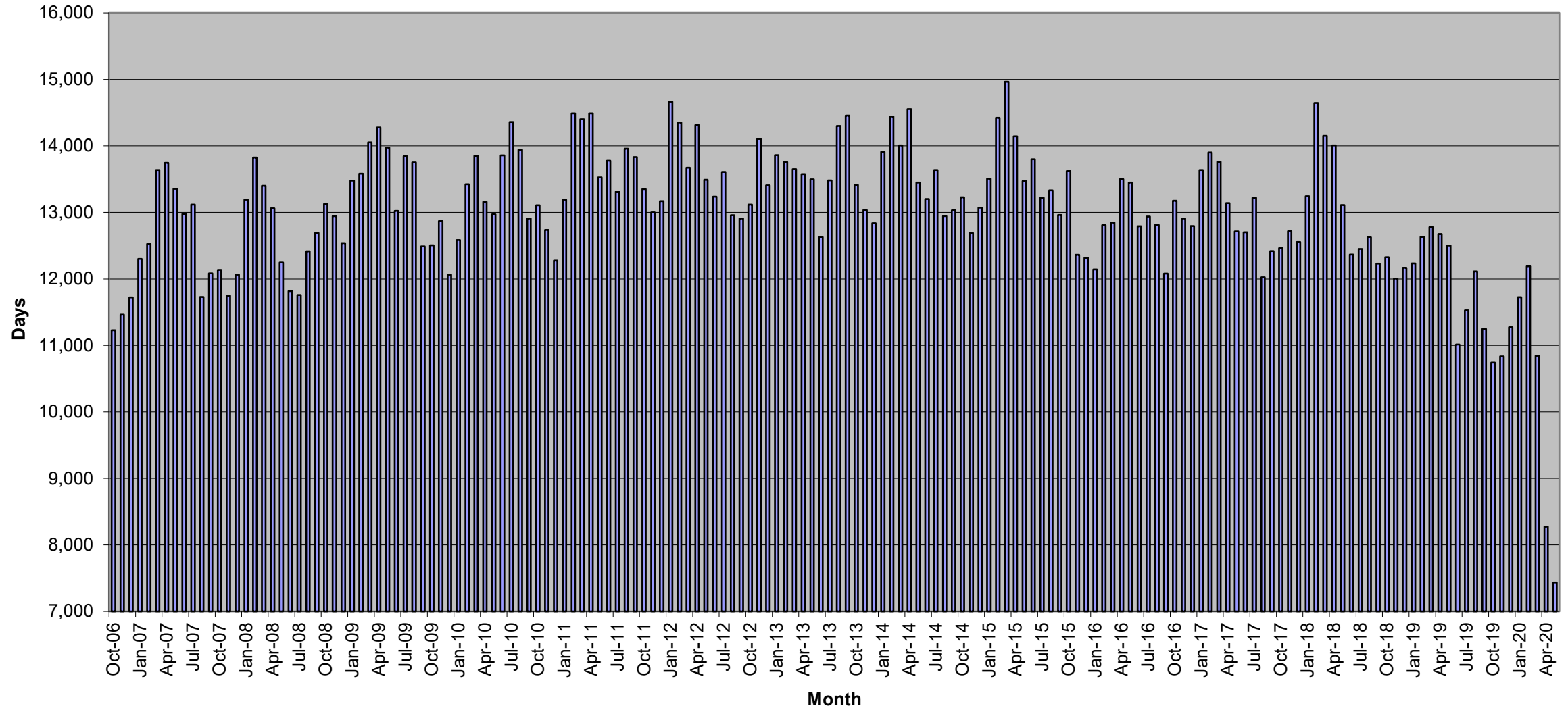
Medicare Days For State Fiscal Years 2009 to Present



Medicare SFY 08 Medicare SFY 09 Medicare SFY 10 Medicare SFY 11 Medicare SFY 12 Medicare SFY 13 Medicare SFY 14 Medicare SFY 15 Medicare SFY 16 Medicare SFY 17 Medicare SFY 18 Medicare SFY 19 Last 12 months

Time Period

Standardized Medicare Part A Monthly Days (Standardized for 31 day month)
Seasonal Cycles in Medicare Days



Nursing Facility Licensed Beds

CURRENT NUMBER OF LICENSED BEDS

Per notice from Licensing and Protection

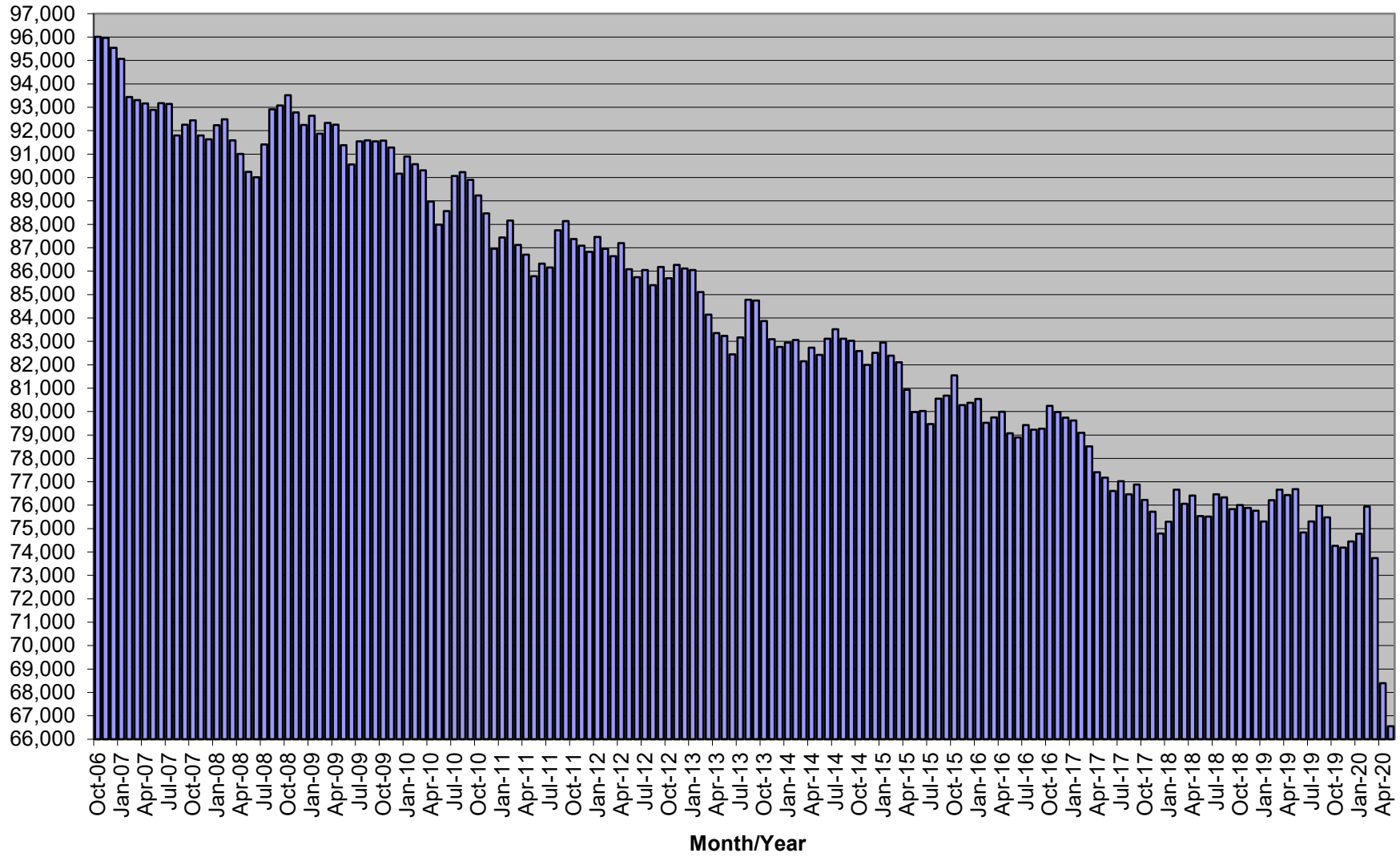
	7/1/2009	4/1/2010	12/1/2010	4/1/2011	8/25/2011	1/19/2012	5/1/2012	7/1/2012	9/1/2013	10/1/2014	4/1/2015
	New columns are added only										
Bel-Aire	44	44	44	44	44	44	44	44	44	44	44
Bennington	100	100	100	100	100	100	100	100	100	100	100
Berlin	141	141	141	141	141	141	141	141	141	141	141
Birchwood Terrace	160	150	150	144	144	144	144	144	144	144	144
Brookside-Bradford	0	0	0	0	0	0	0	0	0	0	0
Brookside-WRJ	67	67	67	67	67	67	67	67	67	67	67
Burlington	126	126	126	126	126	126	126	126	126	126	126
Cedar Hill	39	39	39	39	39	39	39	39	39	39	39
Centers for Living & Rehab	150	150	150	150	150	150	150	150	150	130	130
Clark	0	0	0	0	0	0	0	0	0	0	0
Crescent Manor	90	90	90	90	90	90	90	90	90	90	90
Derby Green	23	23	23	23	23	23	23	23	23	23	23
Franklin County Rehab	64	64	64	64	64	64	64	64	64	64	64
Gifford	30	30	30	30	30	30	30	30	30	30	30
Gill Odd Fellows	56	56	46	46	46	46	46	46	46	46	46
Green Mountain	73	73	73	73	73	73	73	73	73	73	73
Greensboro	30	30	30	30	30	30	30	30	30	30	30
Helen Porter	105	105	105	105	105	105	105	105	105	105	105
Linden Lodge	0	0	0	0	0	0	0	0	0	0	0
Maple Lane	71	71	71	71	71	71	71	71	71	71	71
Mayo	50	50	50	50	50	50	50	50	50	50	50
McGirr	30	30	30	30	30	30	0	0	0	0	0
Morrisville Center	0	0	0	0	0	0	0	0	0	0	0
Mountain View	158	158	158	158	158	158	158	158	158	158	158
Mt. Ascutney	25	25	25	25	25	25	25	25	0	0	0
Newport	50	50	50	50	50	50	50	50	50	50	50
Pine Heights at Brattleboro	80	80	80	80	80	80	80	80	80	80	80
Pine Knoll	60	60	60	60	60	60	60	60	60	60	60
Pines at Rutland	125	125	125	125	125	125	125	125	125	125	125
Prospect	21	21	21	21	21	0	0	0	0	0	0
Redstone Villa	30	30	30	30	30	30	30	30	30	30	30
Rowan Court	96	96	96	96	96	96	96	96	96	96	96
Rutland Healthcare	127	123	123	123	123	123	123	123	123	123	123
Sager	0	0	0	0	0	0	0	0	0	0	0
Springfield	102	102	102	102	102	102	102	102	102	102	102
St. Albans Healthcare	120	115	115	115	115	115	115	115	115	115	115
St. Johnsbury	110	110	110	110	110	110	110	110	110	110	110
Starr Farm	150	150	150	150	150	150	150	150	150	150	150
Stratton House	0	0	0	0	0	0	0	0	0	0	0
The Manor	72	72	72	72	72	72	72	72	72	72	72
Thompson House	43	43	43	43	43	43	43	43	43	43	43
Union House	44	44	44	44	44	44	44	44	44	44	44
Vernon Green	60	60	60	60	60	60	60	60	60	60	60
Veterans Home	177	177	177	177	177	177	177	171	171	171	130
Woodridge	153	153	153	153	153	153	153	153	153	153	153
Total	3,252	3,233	3,223	3,217	3,217	3,196	3,166	3,160	3,135	3,115	3,074
Plus facilities not participating in Medicaid											
Arbors	12	12	12	12	12	12	12	12	12	12	12
Mertens	14	14	14	14	14	14	14	14	14	14	14
Wake Robin	48	48	48	48	51	51	51	51	51	51	51
Grand Total	3,326	3,307	3,297	3,291	3,294	3,273	3,243	3,237	3,212	3,192	3,151

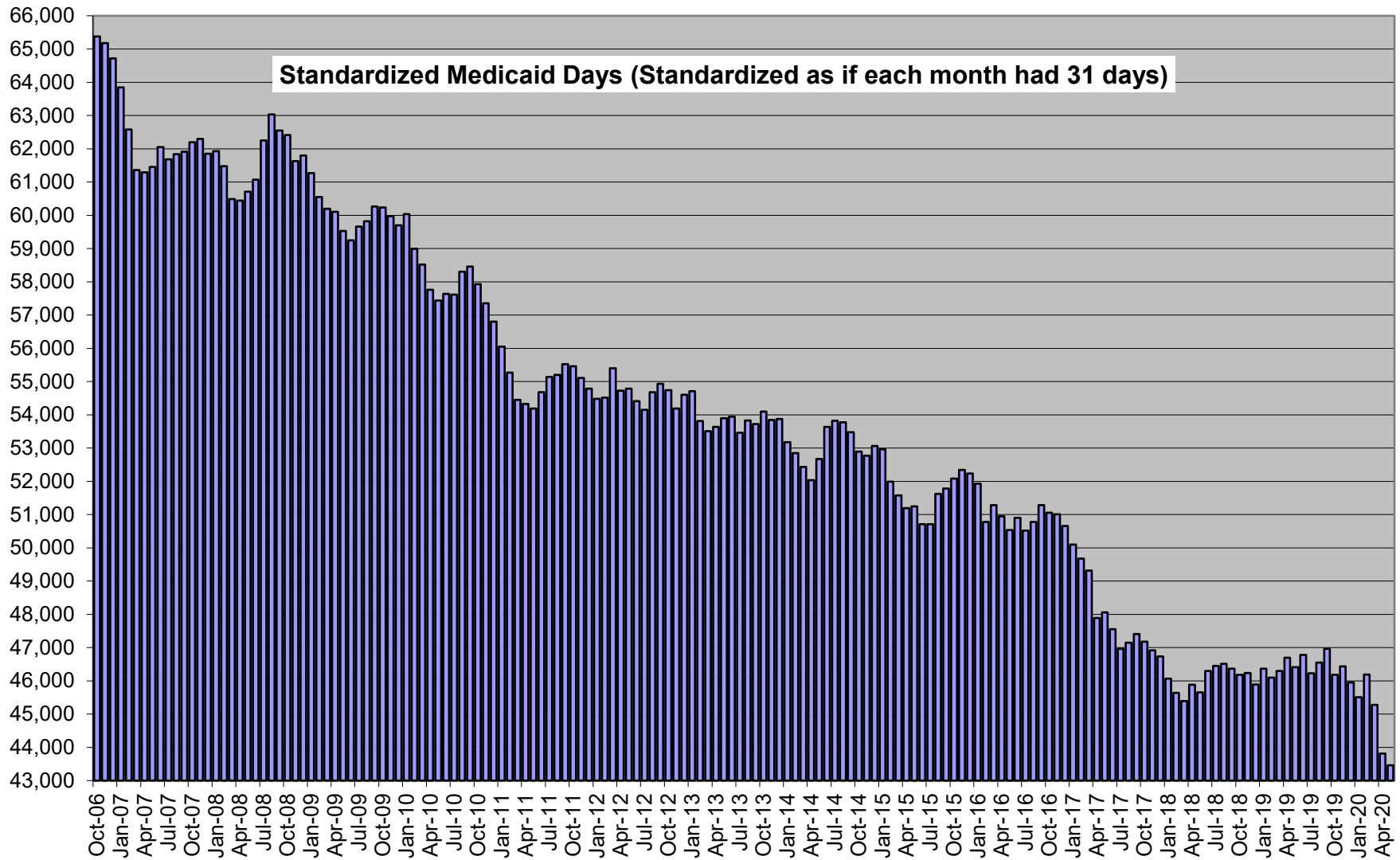
MEDICAID PARTICIPATING FACILITIES ONLY

Number of
Beds April 1,
2020

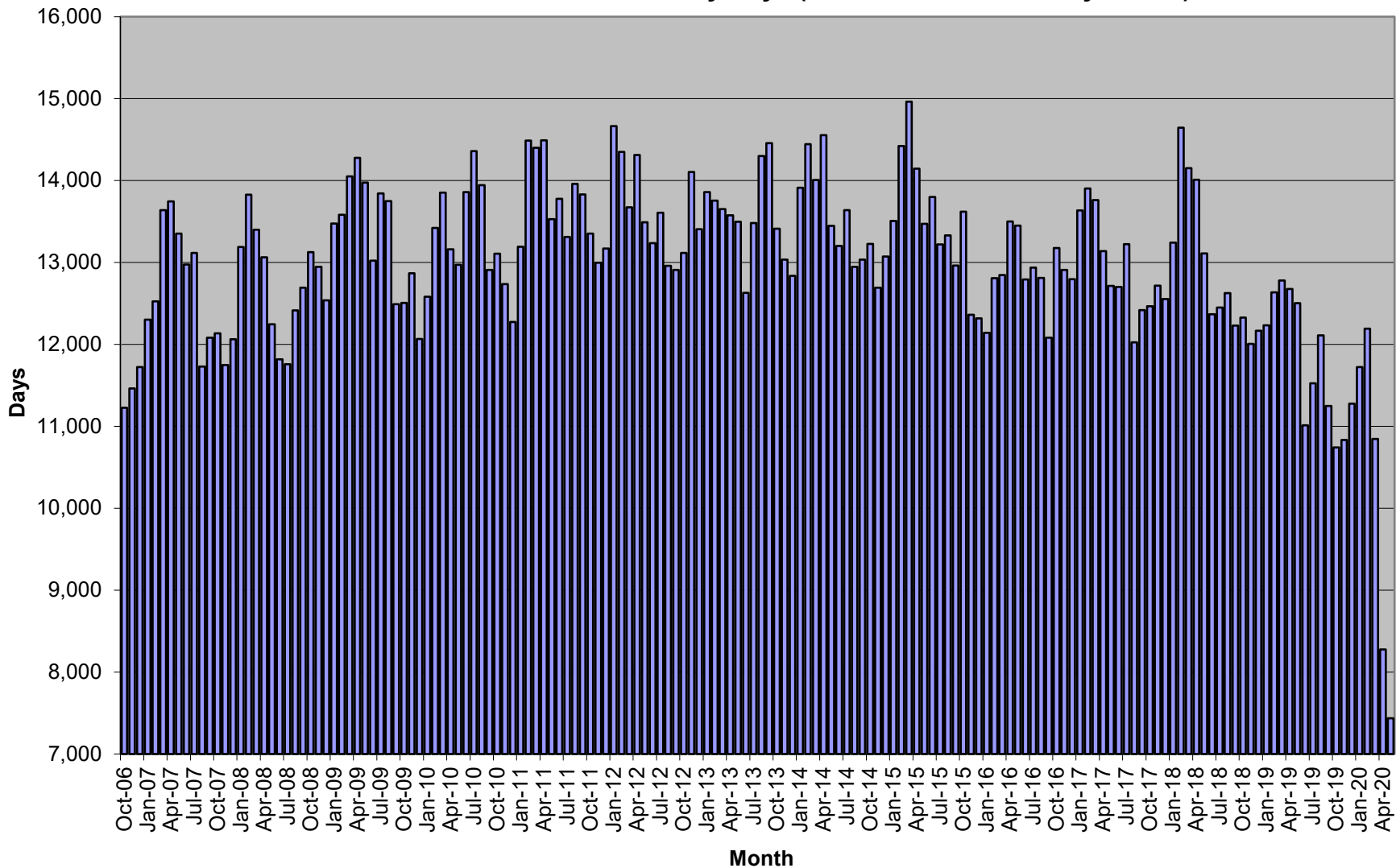
<u>County</u>	<u>Alphabetical List of Nursing Facilities</u>		<u>County</u>	<u>Nursing Facilities Sorted by County</u>	<u>Number of Beds in NFs Participating in Medicaid</u>
Orleans	Bel-Aire	58	Addison	Helen Porter	98
Bennington	Bennington	91	Bennington	Bennington	91
Washington	Berlin	115	Bennington	Centers for Living & Rehab	130
Chittenden	Birchwood Terrace	144	Bennington	Crescent Manor	90
Windsor	Brookside-WRJ	0	Bennington	Prospect	0
Chittenden	Burlington	126	Bennington	Veterans Home	130
Windsor	Cedar Hill	39	Caledonia	Pine Knoll	60
Bennington	Centers for Living & Rehab	130	Caledonia	St. Johnsbury	99
Lamoille	The Manor	72	Chittenden	Birchwood Terrace	144
Bennington	Crescent Manor	90	Chittenden	Burlington	126
Orleans	Derby Green	0	Chittenden	Green Mountain	73
Windham	Pine Heights at Brattleboro	80	Chittenden	Starr Farm	150
Rutland	Pines at Rutland	125	Franklin	Franklin County Rehab	64
Franklin	Franklin County Rehab	64	Franklin	St. Albans Healthcare	93
Orange	Gifford	30	Franklin	Redstone Villa	30
Windsor	Gill Odd Fellows	46	Lamoille	The Manor	72
Chittenden	Green Mountain	73	Orange	Gifford	30
Orleans	Greensboro	30	Orleans	Bel-Aire	58
Rutland	Rutland Healthcare	103	Orleans	Derby Green	0
Franklin	St. Albans Healthcare	93	Orleans	Greensboro	30
Addison	Helen Porter	98	Orleans	Maple Lane	71
Orleans	Maple Lane	71	Orleans	Newport	50
Washington	Mayo	50	Orleans	Union House	44
Windham	McGirr	0	Rutland	Pines at Rutland	125
Rutland	Mountain View	158	Rutland	Rutland Healthcare	103
Windsor	Mt. Ascutney	0	Rutland	Mountain View	158
Orleans	Newport	50	Washington	Berlin	115
Caledonia	Pine Knoll	60	Washington	Mayo	50
Bennington	Prospect	0	Washington	Rowan Court	96
Franklin	Redstone Villa	30	Washington	Woodridge	153
Washington	Rowan Court	96	Windham	Pine Heights at Brattleboro	80
Windsor	Springfield	96	Windham	McGirr	0
Caledonia	St. Johnsbury	99	Windham	Thompson House	43
Chittenden	Starr Farm	150	Windham	Vernon Green	60
Windham	Thompson House	43	Windsor	Brookside-WRJ	0
Orleans	Union House	44	Windsor	Cedar Hill	39
Windham	Vernon Green	60	Windsor	Gill Odd Fellows	46
Bennington	Veterans Home	130	Windsor	Mt. Ascutney	0
Washington	Woodridge	153	Windsor	Springfield	96
	Total	<u>2,897</u>			<u>2,897</u>

Total Nursing Facility Resident Days (Standardized for 31 days in each month)

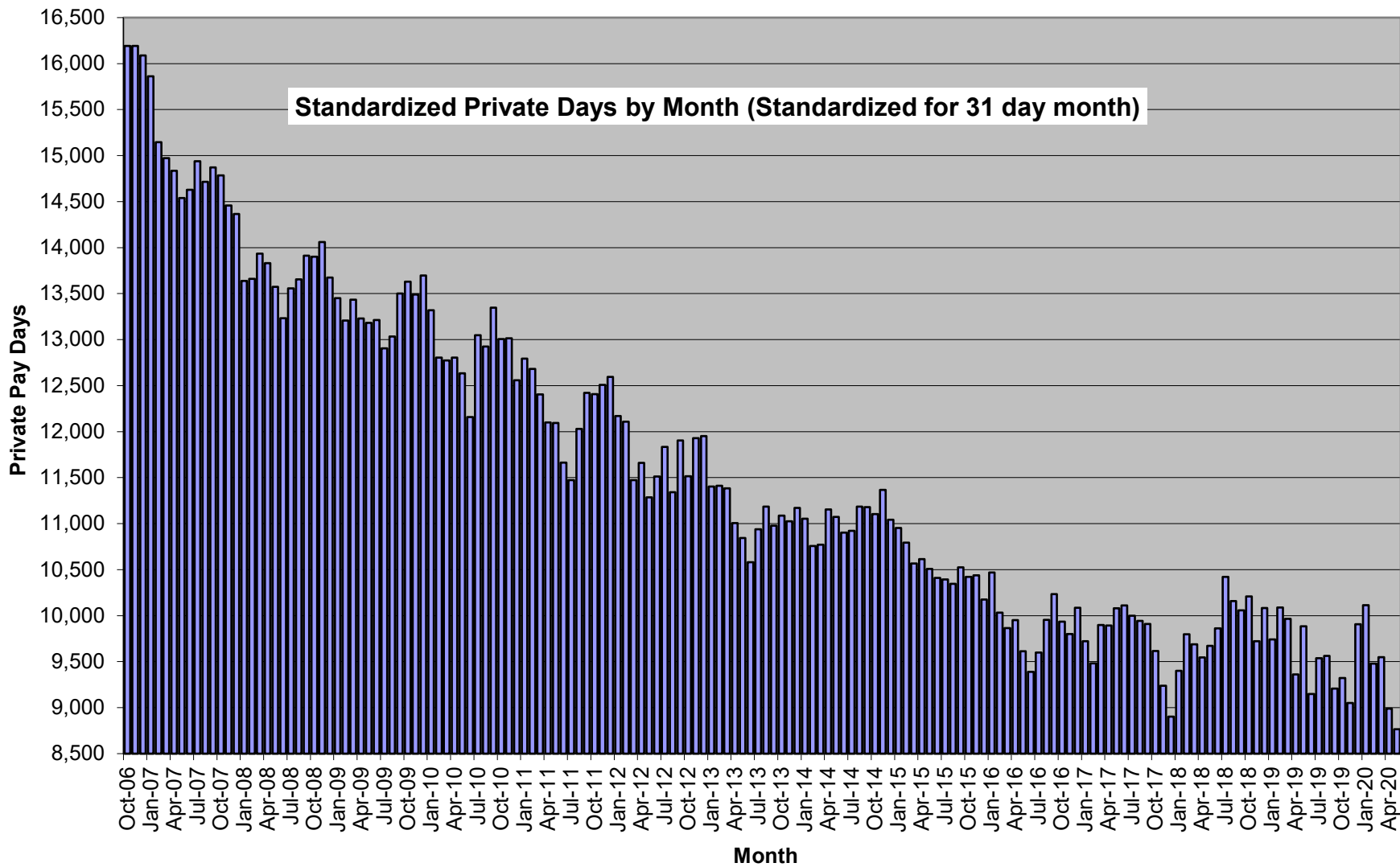




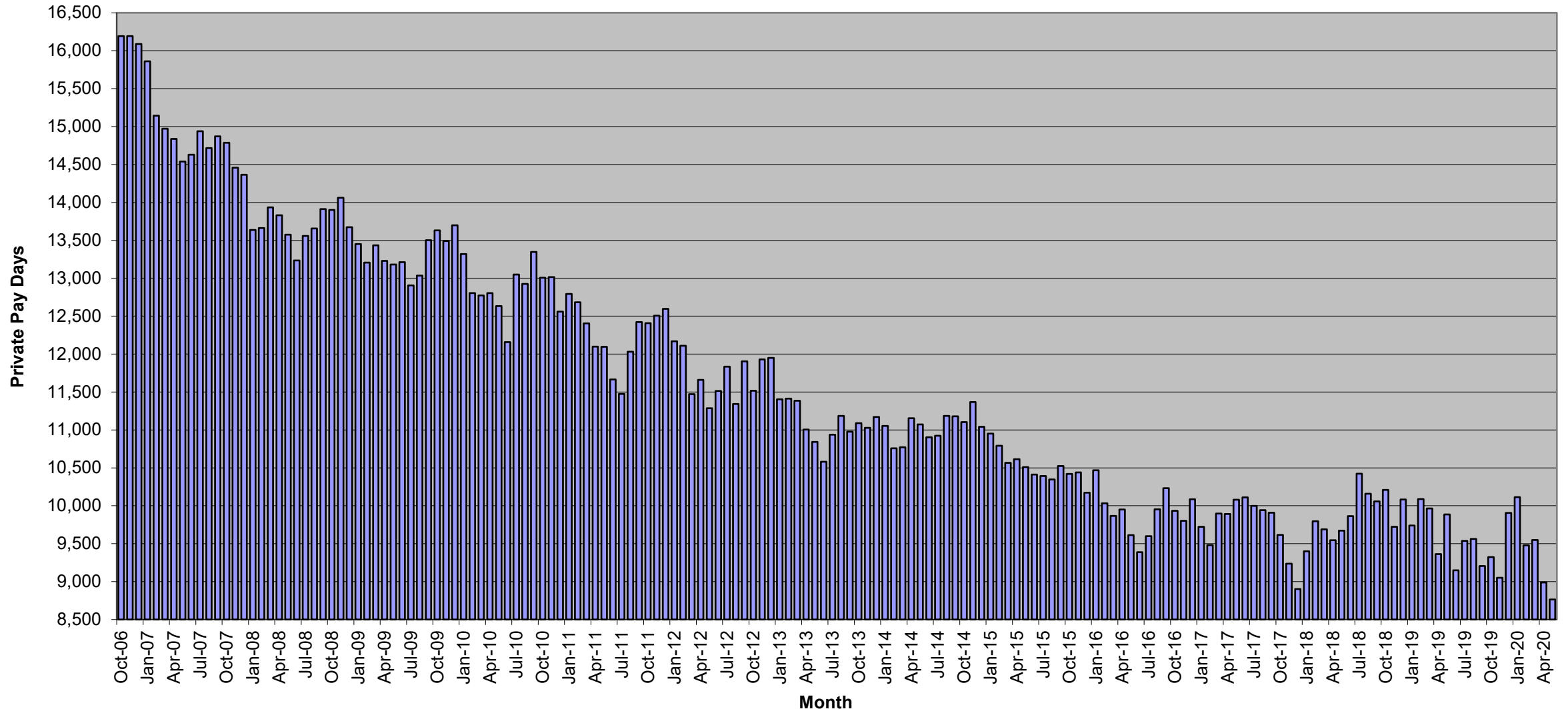
Standardized Medicare Part A Monthly Days (Standardized for 31 day month)



Standardized Private Days by Month (Standardized for 31 day month)



Standardized Private Days by Month Back to January 2004 (Standardized for 31 day month)



A	
1	Total Resident Days
2	Division of Rate Setting Schedule of Rep
3	
4	
5	Nursing Home
6	
7	Bel-Aire
8	Bennington
9	Berlin
10	Birchwood Terrace
11	Brookside-Bradford
12	Brookside-WRJ
13	Burlington
14	Cedar Hill
15	Centers for Living & Rehab
16	Clark
17	Crescent Manor
18	Derby Green
19	Franklin County Rehab
20	Gifford
21	Gill Odd Fellows
22	Green Mountain
23	Greensboro
24	Helen Porter
25	Linden Lodge
26	Maple Lane
27	Mayo
28	McGirr
29	Morrisville Center
30	Mountain View
31	Mt. Ascutney
32	Newport
33	Pine Heights at Brattleboro
34	Pine Knoll
35	Pines at Rutland
36	Prospect
37	Redstone Villa
38	Rowan Court
39	Rutland Healthcare
40	Sager
41	Springfield
42	St. Albans Healthcare
43	St. Johnsbury
44	Starr Farm
45	Stratton House
46	The Manor

C:\Users\Hope.Smith\AppData\Local\Microsoft\Windows\NetCache\Content.Outlook\E1OKP7BJ\COPY of May 2020 census with name changes.xlsx20-Totaldays by month

	A
1	Total Resident Days
2	Division of Rate Setting Schedule of Rep
3	
4	
5	Nursing Home
47	Thompson House
48	Union House
49	Vernon Green
50	Veterans Home
51	Woodridge
52	
53	Totals

	720,858	696,729	662,817	648,946	638,619	627,622
--	---------	---------	---------	---------	---------	---------

**Percent of OOS
days to total days
over the last 12
months**

0.80%



Totals		147,952	154,838	154,381	160,062	161,671	158,024	161,904
--------	--	---------	---------	---------	---------	---------	---------	---------

Average no. of Residents

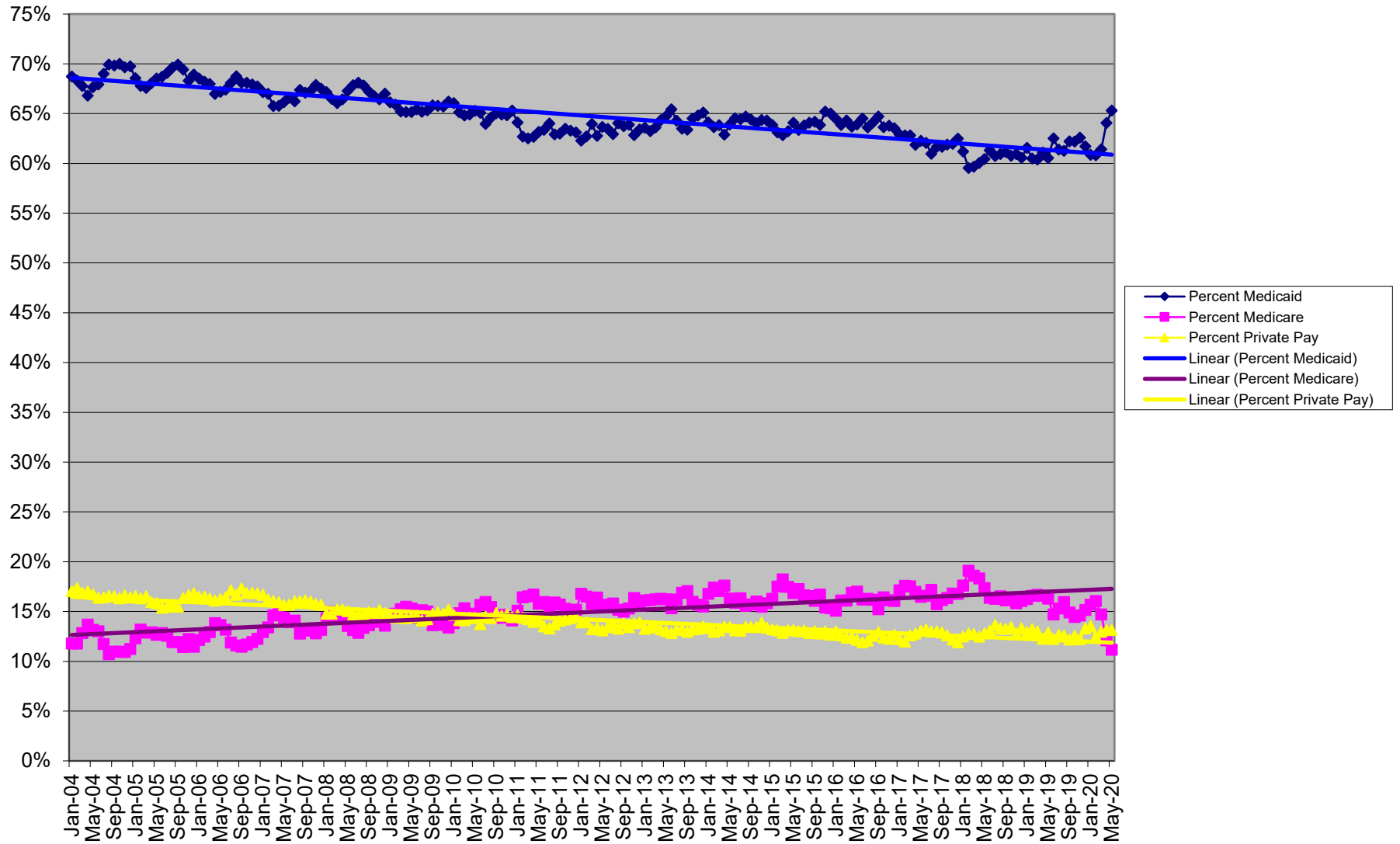




1	2	3	4	5	6	7	8	9	10	11	12
---	---	---	---	---	---	---	---	---	----	----	----



History of the Percent of Resident Days by Payor Group



	Jan-04	Feb-04	Mar-04	Apr-04	May-04	Jun-04	Jul-04	Aug-04
Medicare Days	11,604	10,758	12,567	13,092	13,026	12,481	11,575	10,571
Medicaid Days	67,696	62,407	66,343	63,874	66,926	65,178	68,043	68,943
Private Days	16,806	15,859	16,515	16,272	16,554	15,702	16,199	16,352
Total Days	98,491	91,343	97,890	95,611	98,933	95,943	98,602	98,592

	<u>Jan-04</u>	<u>Feb-04</u>	<u>Mar-04</u>	<u>Apr-04</u>	<u>May-04</u>	<u>Jun-04</u>	<u>Jul-04</u>	<u>Aug-04</u>
Percent Medicaid	69%	68%	68%	67%	68%	68%	69%	70%
Percent Medicare	12%	12%	13%	14%	13%	13%	12%	11%
Percent Private Pay	17%	17%	17%	17%	17%	16%	16%	17%

Sep-04	Oct-04	Nov-04	Dec-04	Jan-05	Feb-05	Mar-05	Apr-05	May-05	Jun-05
10,393	10,717	10,361	10,939	12,016	11,644	12,457	11,804	12,010	11,876
66,245	68,409	66,037	67,841	66,869	59,898	65,318	62,281	64,987	63,578
15,675	15,955	15,772	15,947	16,152	14,436	15,975	14,600	15,010	14,243
94,886	97,730	94,814	97,273	97,563	88,385	96,662	91,519	94,847	92,536

<u>Sep-04</u>	<u>Oct-04</u>	<u>Nov-04</u>	<u>Dec-04</u>	<u>Jan-05</u>	<u>Feb-05</u>	<u>Mar-05</u>	<u>Apr-05</u>	<u>May-05</u>	<u>Jun-05</u>
70%	70%	70%	70%	69%	68%	68%	68%	69%	69%
11%	11%	11%	11%	12%	13%	13%	13%	13%	13%
17%	16%	17%	16%	17%	16%	17%	16%	16%	15%

Jul-05	Aug-05	Sep-05	Oct-05	Nov-05	Dec-05	Jan-06	Feb-06	Mar-06	Apr-06
12,078	11,508	11,224	11,070	11,448	10,976	11,656	10,868	12,395	12,770
66,482	67,053	65,678	67,205	63,911	66,048	65,884	59,416	65,138	61,801
14,890	15,122	14,543	15,824	15,595	16,135	15,844	14,377	15,605	14,849
96,212	96,316	93,944	96,789	93,582	95,822	96,139	87,130	95,836	92,257

<u>Jul-05</u>	<u>Aug-05</u>	<u>Sep-05</u>	<u>Oct-05</u>	<u>Nov-05</u>	<u>Dec-05</u>	<u>Jan-06</u>	<u>Feb-06</u>	<u>Mar-06</u>	<u>Apr-06</u>
69%	70%	70%	69%	68%	69%	69%	68%	68%	67%
13%	12%	12%	11%	12%	11%	12%	12%	13%	14%
15%	16%	15%	16%	17%	17%	16%	17%	16%	16%

Nov-08	Dec-08	Jan-09	Feb-09	Mar-09	Apr-09	May-09	Jun-09	Jul-09	Aug-09
12,528	12,537	13,476	12,268	14,052	13,817	13,976	12,602	13,844	13,749
59,639	61,800	61,267	54,692	60,196	58,168	59,534	57,337	59,659	59,822
13,608	13,674	13,452	11,929	13,434	12,803	13,181	12,786	12,906	13,035
89,793	92,241	92,641	82,979	92,327	89,282	91,380	87,641	91,544	91,583

<u>Nov-08</u>	<u>Dec-08</u>	<u>Jan-09</u>	<u>Feb-09</u>	<u>Mar-09</u>	<u>Apr-09</u>	<u>May-09</u>	<u>Jun-09</u>	<u>Jul-09</u>	<u>Aug-09</u>
66%	67%	66%	66%	65%	65%	65%	65%	65%	65%
14%	14%	15%	15%	15%	15%	15%	14%	15%	15%
15%	15%	15%	14%	15%	14%	14%	15%	14%	14%

Sep-09	Oct-09	Nov-09	Dec-09	Jan-10	Feb-10	Mar-10	Apr-10	May-10	Jun-10
12,088	12,505	12,454	12,065	12,583	12,123	13,853	12,735	12,971	13,411
58,322	60,235	58,042	59,698	60,036	53,286	58,516	55,894	57,439	55,780
13,066	13,630	13,055	13,698	13,319	11,566	12,773	12,391	12,633	11,766
88,590	91,573	88,338	90,163	90,902	81,807	90,306	86,099	87,980	85,713

<u>Sep-09</u>	<u>Oct-09</u>	<u>Nov-09</u>	<u>Dec-09</u>	<u>Jan-10</u>	<u>Feb-10</u>	<u>Mar-10</u>	<u>Apr-10</u>	<u>May-10</u>	<u>Jun-10</u>
66%	66%	66%	66%	66%	65%	65%	65%	65%	65%
14%	14%	14%	13%	14%	15%	15%	15%	15%	16%
15%	15%	15%	15%	15%	14%	14%	14%	14%	14%

Jul-10	Aug-10	Sep-10	Oct-10	Nov-10	Dec-10	Jan-11	Feb-11	Mar-11	Apr-11
14,360	13,944	12,492	13,107	12,325	12,275	13,193	13,086	14,400	14,022
57,614	58,304	56,570	57,929	55,502	56,800	56,048	49,923	54,450	52,573
13,049	12,926	12,917	13,007	12,595	12,559	12,793	11,455	12,405	11,708
90,063	90,234	87,004	89,234	85,615	86,959	87,441	79,627	87,117	83,905

<u>Jul-10</u>	<u>Aug-10</u>	<u>Sep-10</u>	<u>Oct-10</u>	<u>Nov-10</u>	<u>Dec-10</u>	<u>Jan-11</u>	<u>Feb-11</u>	<u>Mar-11</u>	<u>Apr-11</u>
64%	65%	65%	65%	65%	65%	64%	63%	62.5%	62.7%
16%	15%	14%	15%	14%	14%	15%	16%	17%	17%
14%	14%	15%	15%	15%	14%	15%	14%	14%	14%

May-11	Jun-11	Jul-11	Aug-11	Sep-11	Oct-11	Nov-11	Dec-11	Jan-12	Feb-12
13,527	13,331	13,311	13,960	13,385	13,352	12,579	13,170	14,664	13,425
54,186	52,918	55,141	55,202	53,729	55,465	53,330	54,787	54,480	51,004
12,095	11,288	11,474	12,030	12,021	12,407	12,104	12,596	12,169	11,328
85,784	83,534	86,158	87,745	85,291	87,370	84,273	86,821	87,455	81,346

<u>May-11</u>	<u>Jun-11</u>	<u>Jul-11</u>	<u>Aug-11</u>	<u>Sep-11</u>	<u>Oct-11</u>	<u>Nov-11</u>	<u>Dec-11</u>	<u>Jan-12</u>	<u>Feb-12</u>
63.2%	63.3%	64.0%	62.9%	63.0%	63.5%	63.3%	63.1%	62.3%	62.7%
16%	16%	15%	16%	16%	15%	15%	15%	17%	17%
14%	14%	13%	14%	14%	14%	14%	15%	14%	14%

Mar-12	Apr-12	May-12	Jun-12	Jul-12	Aug-12	Sep-12	Oct-12	Nov-12	Dec-12
13,673	13,851	13,491	12,810	13,607	12,959	12,493	13,117	13,650	13,405
55,404	52,958	54,790	52,656	54,155	54,681	53,159	54,740	52,445	54,603
11,473	11,284	11,287	11,142	11,834	11,341	11,520	11,516	11,544	11,950
86,641	84,386	86,079	82,979	86,047	85,400	83,396	85,694	83,478	86,108

<u>Mar-12</u>	<u>Apr-12</u>	<u>May-12</u>	<u>Jun-12</u>	<u>Jul-12</u>	<u>Aug-12</u>	<u>Sep-12</u>	<u>Oct-12</u>	<u>Nov-12</u>	<u>Dec-12</u>
64%	63%	64%	63%	63%	64%	64%	64%	63%	63%
16%	16%	16%	15%	16%	15%	15%	15%	16%	16%
13%	13%	13%	13%	14%	13%	14%	13%	14%	14%

Apr-16	May-16	Jun-16	Jul-16	Aug-16	Sep-16	Oct-16	Nov-16	Dec-16	Jan-17
13,065	13,449	12,380	12,938	12,811	11,691	13,176	12,491	12,795	13,636
49,305	50,534	49,258	50,521	50,783	49,633	51,059	49,366	50,660	50,094
9,630	9,612	9,086	9,598	9,953	9,903	9,935	9,485	10,086	9,723
77,411	79,075	76,356	79,427	79,229	76,715	80,243	77,397	79,739	79,619

<u>Apr-16</u>	<u>May-16</u>	<u>Jun-16</u>	<u>Jul-16</u>	<u>Aug-16</u>	<u>Sep-16</u>	<u>Oct-16</u>	<u>Nov-16</u>	<u>Dec-16</u>	<u>Jan-17</u>
64%	64%	65%	64%	64%	65%	64%	64%	64%	63%
17%	17%	16%	16%	16%	15%	16%	16%	16%	17%
12%	12%	12%	12%	13%	13%	12%	12%	13%	12%

Dec-17	Jan-18	Feb-18	Mar-18	Apr-18	May-18	Jun-18	Jul-18	Aug-18	Sep-18
12,553	13,243	13,228	14,151	13,557	13,110	11,968	12,450	12,625	11,835
46,733	46,065	41,224	45,390	44,404	45,652	44,802	46,447	46,509	44,868
8,902	9,399	8,849	9,689	9,239	9,672	9,545	10,422	10,158	9,732
74,787	75,290	69,247	76,062	73,946	75,538	73,076	76,462	76,331	73,387
<u>Dec-17</u>	<u>Jan-18</u>	<u>Feb-18</u>	<u>Mar-18</u>	<u>Apr-18</u>	<u>May-18</u>	<u>Jun-18</u>	<u>Jul-18</u>	<u>Aug-18</u>	<u>Sep-18</u>
62%	61%	60%	60%	60%	60%	61%	61%	61%	61%
17%	18%	19%	19%	18%	17%	16%	16%	17%	16%
12%	12%	13%	13%	12%	13%	13%	14%	13%	13%

Oct-18	Nov-18	Dec-18	Jan-19	Feb-19	Mar-19	Apr-19	May-19	Jun-19	Jul-19
12,327	11,618	12,166	12,231	11,411	12,779	12,267	12,503	10,657	11,526
46,178	44,746	45,888	46,365	41,634	46,296	45,186	46,414	45,273	46,226
10,209	9,409	10,083	9,741	9,113	9,965	9,060	9,885	8,854	9,536
76,007	73,439	75,761	75,304	68,835	76,657	73,962	76,682	72,420	75,309

<u>Oct-18</u>	<u>Nov-18</u>	<u>Dec-18</u>	<u>Jan-19</u>	<u>Feb-19</u>	<u>Mar-19</u>	<u>Apr-19</u>	<u>May-19</u>	<u>Jun-19</u>	<u>Jul-19</u>
61%	61%	61%	62%	60%	60%	61%	61%	63%	61%
16%	16%	16%	16%	17%	17%	17%	16%	15%	15%
13%	13%	13%	13%	13%	13%	12%	13%	12%	13%

Aug-19	Sep-19	Oct-19	Nov-19	Dec-19	Jan-20	Feb-20	Mar-20	Apr-20	May-20
12,111	10,886	10,742	10,484	11,275	11,724	11,404	10,845	8,009	7,435
46,551	45,449	46,179	44,935	45,954	45,509	43,211	45,278	42,399	43,463
9,562	8,909	9,323	8,758	9,906	10,114	8,868	9,549	8,698	8,765
75,972	73,045	74,263	71,792	74,453	74,774	71,041	73,740	66,185	66,551

<u>Aug-19</u>	<u>Sep-19</u>	<u>Oct-19</u>	<u>Nov-19</u>	<u>Dec-19</u>	<u>Jan-20</u>	<u>Feb-20</u>	<u>Mar-20</u>	<u>Apr-20</u>	<u>May-20</u>
61%	62%	62%	63%	62%	61%	61%	61%	64%	65%
16%	15%	14%	15%	15%	16%	16%	15%	12%	11%
13%	12%	13%	12%	13%	14%	12%	13%	13%	13%

Start with tab 20 to tab 23 to update these

On tab 21 be sure to update formula in OOS days on row 64 and update formulas in the % of OOS box

go to next to last tab "data for % private days" and copy formula over one more month

update graph on tab 24-Trend % by Payor

update tabs 12 to 19 (edit the horizontal axis first for best result)

Tab 11 will update automatically within a state fiscal year but must be changed to a new year of data to show last twelve months for comparison. Do this around October when there is enough new data. - c

Tab 6 will update automatically within a state fiscal year but must be changed to a new year. Do this around October of each new fiscal year when there will enough data to show a change. data is from tab

Update tab 2 references to data file, change month name at top and on the tab

Work back from tab 2 to tab 10. On tab 7, update starting from column c and going down to the total line

Then do tab 1 update. When adding a column for the new month copy info all the way down to days in the month over to the new column. The days in the month is at line 89 as of

5/16/15 but this line will change if there are more bed changes.

Go back to tab 2 to make sure that there is no difference between the total occupancy on that tab and the comparison column with data from tab 1, formulas will need to be changed in col. N on tab 2

data is from
21-Monthly