

New Order

<u>New Tab #</u>	<u>Old Tab #</u>	<u>Table of Contents</u>
1	1	Total occupancy percentage by month by facility
2	2	Monthly occupancy as a portion of available capacity
3	3	Most recent month's days by facility and by payor group
4	13	Line chart of trends in Private, Medicaid and Medicare Days
5	6-A	Average Number of Vermont Medicaid Residents in Vermont facilities by Month
6	8	Line chart showing trend of annual Medicaid days from SFY 05 to most current 12 month period
7	15	Monthly occupancy by payor group as a portion of actual resident days
8	16	Monthly occupancy showing highest to lowest Medicaid utilization
9	16-A	Monthly occupancy showing highest to lowest Self Pay utilization
10	16-B	Monthly occupancy showing highest to lowest Medicare utilization
11	10-A	Year to Year Comparison of Medicare Days
12	10-B	Cycles in Medicare Days
13	14	Current Number of Beds
14	17	Beds by County
15	5	Bar chart comparing monthly total days from July 05 to present
16	7	Bar chart comparing monthly Medicaid days from July 05 to present
17	10	Bar chart comparing monthly Medicare days from July 05 to present
18	12	Bar chart comparing monthly Private days from July 05 to present
19	12-A	Trend in Private Pay
20	4	Total days by month
21	6	Vermont Medicaid days by month
22	9	Medicare days by month
23	11	Private days by month
24	18	Historical Percentages Showing Each Payor Source as a Percent of Total Days

HOLD DOWN THE CONTROL KEY  
TO GO FROM TAB TO TAB

TO BACK UP, HOLD DOWN THE C  
UP KEY.

**YTD Utilization- Based on Capacity**

Division of Rate Setting Schedule of Reported Resident Days by the Month

Nursing Home	Capacity as of Jan 98	1 Jan-04	2 Feb-04	3 Mar-04	4 Apr-04	5 May-04	6 Jun-04	7 Jul-04	8 Aug-04	9 Sep-04	10 Oct-04	11 Nov-04	12 Dec-04	1 Jan-05	2 Feb-05	3 Mar-05
Bel-Aire	44	96.85%	97.02%	93.40%	93.11%	97.80%	99.47%	97.73%	98.83%	99.62%	97.73%	95.83%	93.40%	94.50%	94.32%	94.43%
Bennington	100	89.06%	87.72%	88.32%	89.03%	89.23%	89.70%	90.10%	91.32%	89.80%	84.13%	84.77%	89.10%	91.45%	92.11%	87.29%
Berlin	152	87.73%	83.98%	76.19%	80.79%	84.91%	86.14%	84.72%	81.47%	77.57%	82.81%	85.18%	84.57%	85.57%	87.50%	83.51%
Birchwood Terrace	160	91.79%	91.14%	91.75%	94.58%	97.08%	96.83%	97.04%	98.23%	98.02%	94.78%	95.40%	94.80%	96.09%	93.62%	93.08%
Brookside-WRJ	67	94.22%	96.35%	97.35%	96.22%	94.03%	95.42%	93.93%	94.46%	94.48%	91.24%	87.86%	89.60%	89.74%	92.75%	89.31%
Burlington	168	91.30%	88.96%	88.00%	91.47%	92.53%	92.60%	87.42%	76.67%	71.69%	74.39%	79.15%	78.09%	82.10%	86.61%	82.85%
Cedar Hill	39	97.93%	93.02%	96.20%	95.73%	98.84%	99.74%	99.92%	99.26%	98.55%	96.53%	91.11%	97.77%	94.21%	98.08%	99.01%
Centers for Living & Rehab	150	89.51%	92.92%	92.43%	91.24%	92.67%	89.96%	95.31%	95.18%	94.47%	92.97%	94.07%	94.32%	92.22%	92.64%	90.11%
Crescent Manor	90	87.67%	85.67%	87.60%	89.85%	88.10%	87.48%	90.97%	91.86%	89.15%	90.79%	88.70%	87.99%	94.55%	97.18%	93.76%
Derby Green	23	94.25%	92.05%	97.90%	100.00%	100.00%	99.57%	97.19%	97.48%	96.38%	95.79%	98.84%	98.32%	92.57%	93.01%	94.53%
Franklin County Rehab	64	96.37%	98.28%	98.69%	96.61%	91.63%	96.04%	93.60%	97.43%	97.92%	94.15%	97.81%	94.20%	97.73%	97.66%	97.08%
Gifford	20	100.00%	100.00%	97.42%	100.00%	100.00%	99.50%	100.00%	95.81%	98.00%	97.90%	100.00%	98.55%	99.35%	98.57%	100.00%
Gill Odd Fellows	56	95.74%	93.60%	87.38%	84.94%	82.09%	80.83%	88.13%	88.13%	89.35%	89.80%	77.44%	81.74%	84.74%	92.60%	92.80%
Green Mountain	73	87.49%	88.71%	85.73%	88.58%	94.21%	91.74%	81.93%	84.67%	88.68%	86.70%	90.32%	89.84%	93.50%	92.95%	86.39%
Greensboro	30	93.33%	96.67%	96.67%	96.67%	95.70%	91.78%	93.44%	94.52%	95.33%	92.37%	93.33%	92.80%	93.33%	92.74%	93.66%
Helen Porter	118	91.21%	90.44%	92.60%	95.49%	96.59%	98.32%	94.90%	96.71%	95.43%	95.88%	94.35%	94.81%	96.47%	95.10%	96.53%
Maple Lane	71	96.46%	94.51%	95.00%	97.23%	93.91%	93.33%	93.14%	97.55%	96.95%	96.27%	96.20%	93.64%	95.55%	95.77%	94.05%
Mayo	50	98.13%	99.10%	95.55%	95.80%	96.58%	98.67%	93.74%	98.19%	97.40%	98.00%	100.00%	99.42%	99.03%	99.00%	98.58%
McGirr	30	98.49%	97.93%	94.84%	96.33%	90.75%	92.33%	89.35%	97.74%	92.89%	93.12%	91.11%	91.83%	92.37%	85.71%	83.01%
Mountain View	166	97.28%	97.40%	97.10%	97.03%	95.55%	96.49%	97.05%	95.84%	96.14%	95.30%	96.08%	94.44%	92.83%	93.33%	96.68%
Mt. Ascutney	66	94.77%	92.33%	93.05%	89.37%	90.27%	93.45%	94.44%	95.49%	94.37%	98.55%	96.72%	98.44%	97.11%	92.73%	84.20%
Newport	60	74.84%	78.51%	83.87%	77.94%	74.89%	75.89%	73.71%	75.43%	75.06%	77.85%	77.89%	74.03%	68.49%	67.44%	65.65%
Pine Heights at Brattleboro	124	98.67%	97.76%	96.81%	99.04%	98.95%	98.67%	95.36%	95.89%	94.92%	99.19%	97.04%	98.43%	93.99%	95.13%	96.25%
Pine Knoll	60	92.85%	84.66%	86.67%	90.72%	93.71%	93.50%	91.99%	91.72%	95.61%	93.17%	97.39%	100.32%	98.87%	98.87%	100.32%
Pines at Rutland	125	97.32%	96.74%	94.43%	92.88%	92.28%	95.47%	95.17%	95.12%	96.77%	97.50%	94.80%	91.74%	94.92%	98.06%	92.88%
Prospect	21	98.46%	97.21%	95.24%	95.24%	95.24%	95.24%	95.24%	94.78%	95.56%	96.77%	89.52%	85.87%	85.71%	92.52%	87.86%
Redstone Villa	30	99.57%	98.16%	96.77%	99.78%	93.76%	90.56%	93.98%	97.85%	99.11%	99.03%	95.33%	94.19%	92.37%	95.95%	92.58%
Rowan Court	104	95.29%	95.95%	95.32%	97.56%	94.08%	94.36%	90.07%	88.46%	86.28%	90.04%	90.93%	90.11%	88.49%	88.67%	80.77%
Rutland Healthcare	127	91.01%	88.95%	90.09%	89.79%	93.50%	91.60%	91.19%	91.08%	91.34%	91.97%	90.89%	92.13%	91.36%	90.02%	89.81%
Springfield	102	95.79%	94.22%	96.24%	96.70%	96.96%	96.18%	95.79%	97.72%	95.03%	93.77%	92.65%	91.33%	84.57%	83.58%	88.30%
St. Albans Healthcare	120	89.65%	90.09%	95.08%	93.53%	91.21%	88.42%	92.04%	95.05%	95.75%	95.83%	96.31%	94.33%	95.86%	95.21%	95.62%
St. Johnsbury	110	94.19%	96.65%	97.89%	97.24%	93.43%	96.94%	96.01%	95.48%	94.85%	93.90%	94.15%	93.43%	94.60%	92.99%	95.43%
Starr Farm	150	84.84%	86.09%	93.46%	94.00%	96.09%	95.44%	96.30%	96.58%	98.60%	95.42%	96.60%	94.80%	97.01%	96.07%	97.70%
The Manor	40	90.32%	92.59%	93.95%	96.08%	98.15%	99.25%	97.18%	95.89%	96.50%	88.87%	97.42%	95.56%	97.98%	96.88%	97.58%
Thompson House	43	96.70%	95.83%	98.05%	97.98%	98.42%	99.53%	97.00%	95.57%	98.14%	98.72%	98.29%	99.10%	99.47%	98.59%	98.20%
Union House	44	87.83%	86.44%	90.18%	85.76%	91.06%	87.35%	89.66%	93.62%	98.26%	96.48%	94.62%	94.35%	93.04%	92.21%	93.62%
Vernon Green	60	97.80%	102.70%	101.18%	101.94%	96.51%	98.39%	99.62%	99.89%	99.44%	97.37%	100.11%	97.37%	99.14%	98.21%	95.70%
Veterans Home	184	87.54%	90.27%	91.41%	92.79%	92.74%	91.36%	91.64%	90.92%	90.07%	88.59%	89.73%	84.84%	83.03%	82.07%	82.91%
Woodridge	153	95.95%	94.88%	96.18%	96.80%	95.57%	97.67%	96.46%	97.32%	95.86%	98.25%	98.00%	97.20%	97.11%	96.92%	97.34%
Totals	3749	90.80%	90.02%	92.36%	93.22%	93.34%	93.54%	93.03%	93.02%	92.51%	92.21%	92.44%	91.78%	92.05%	92.33%	91.20%

**YTD Utilization- Based on Capacity**

Division of Rate Setting Schedule of Reported Resident

Nursing Home	Between 90% and 85%												Between 90% and 85%			
	Between 85% and 80%												Between 85% and 80%			
	Between 80% and 50%												Between 80% and 50%			
	4	5	6	7	8	9	10	11	12	1	2	3	4	5	6	7
Apr-05	May-05	Jun-05	Jul-05	Aug-05	Sep-05	Oct-05	Nov-05	Dec-05	Jan-06	Feb-06	Mar-06	Apr-06	May-06	Jun-06	Jul-06	
Bel-Aire	84.09%	91.06%	95.15%	94.43%	90.32%	83.79%	87.68%	89.47%	87.76%	89.96%	94.81%	96.70%	94.32%	85.78%	89.92%	91.20%
Bennington	87.23%	89.39%	88.53%	90.90%	89.52%	92.60%	91.87%	91.13%	90.29%	93.90%	91.36%	90.48%	90.57%	89.32%	91.47%	90.74%
Berlin	82.39%	85.72%	82.17%	81.07%	81.43%	84.41%	85.29%	85.39%	82.45%	77.46%	84.07%	81.81%	82.50%	78.37%	77.79%	79.82%
Birchwood Terrace	88.85%	89.86%	88.92%	92.84%	92.50%	93.52%	92.80%	94.63%	94.15%	94.92%	94.20%	94.01%	94.81%	96.59%	96.33%	96.27%
Brookside-WRJ	92.89%	93.02%	94.93%	95.33%	94.22%	95.87%	97.11%	93.53%	96.44%	92.01%	90.67%	92.01%	89.15%	82.52%	89.00%	88.06%
Burlington	75.75%	72.66%	73.02%	76.61%	79.13%	79.76%	80.55%	82.46%	85.08%	83.29%	80.93%	73.18%	75.06%	74.12%	78.97%	80.80%
Cedar Hill	94.62%	95.62%	94.02%	92.39%	101.24%	100.34%	99.34%	97.78%	97.11%	94.71%	92.58%	94.13%	95.73%	101.82%	102.56%	100.08%
Centers for Living & Rehab	89.89%	91.55%	93.84%	93.94%	93.46%	91.82%	89.31%	90.13%	89.16%	92.32%	95.24%	93.51%	94.20%	90.65%	94.40%	94.60%
Crescent Manor	93.11%	90.97%	93.89%	95.27%	95.66%	96.56%	95.41%	95.78%	92.26%	91.76%	92.86%	91.65%	94.56%	98.10%	97.11%	96.31%
Derby Green	92.75%	97.19%	97.97%	97.05%	99.30%	97.68%	94.67%	94.49%	93.83%	92.29%	93.01%	98.60%	97.68%	99.86%	100.00%	100.00%
Franklin County Rehab	96.09%	88.36%	96.56%	95.97%	95.92%	94.84%	96.52%	96.41%	90.32%	94.81%	96.09%	94.76%	92.34%	94.76%	95.78%	96.32%
Gifford	100.00%	100.00%	100.00%	100.00%	100.00%	100.00%	98.06%	99.67%	100.00%	100.00%	100.00%	98.87%	99.17%	99.35%	100.00%	98.39%
Gill Odd Fellows	91.73%	96.14%	97.56%	96.31%	98.85%	98.39%	96.49%	87.62%	80.82%	86.58%	85.33%	83.01%	87.14%	88.71%	91.07%	90.96%
Green Mountain	78.72%	75.87%	73.65%	81.66%	84.84%	90.46%	94.12%	92.60%	92.18%	91.25%	87.72%	90.85%	87.63%	91.29%	88.72%	92.84%
Greensboro	96.67%	96.67%	96.67%	96.67%	96.67%	95.56%	93.12%	92.67%	91.94%	92.47%	95.36%	90.00%	91.56%	92.58%	92.78%	92.47%
Helen Porter	92.79%	90.48%	89.87%	94.78%	90.60%	91.81%	91.06%	94.44%	95.88%	96.13%	95.20%	96.87%	96.73%	97.45%	97.02%	99.17%
Maple Lane	94.41%	95.46%	96.15%	98.05%	95.37%	95.40%	94.23%	95.45%	96.14%	94.78%	96.93%	95.59%	93.19%	92.78%	95.87%	94.59%
Mayo	97.33%	96.52%	96.80%	97.55%	99.61%	99.47%	99.42%	98.47%	99.94%	99.68%	99.93%	99.68%	99.20%	99.29%	99.33%	96.26%
McGirr	82.22%	84.41%	80.22%	80.00%	83.23%	79.56%	80.22%	81.56%	82.37%	87.31%	92.86%	90.11%	87.89%	88.28%	83.56%	88.92%
Mountain View	94.54%	92.15%	95.18%	92.27%	90.98%	92.29%	94.75%	94.30%	92.38%	91.43%	89.54%	87.95%	90.24%	88.87%	92.55%	90.54%
Mt. Ascutney	85.46%	87.82%	86.32%	86.93%	84.04%	82.36%	85.43%	85.57%	82.04%	94.52%	95.00%	94.19%	96.53%	95.16%	95.20%	93.35%
Newport	63.06%	64.68%	71.44%	69.25%	68.87%	67.28%	75.03%	71.47%	71.23%	71.61%	72.29%	72.58%	69.20%	68.77%	71.93%	74.26%
Pine Heights at Brattleboro	94.63%	94.11%	91.88%	93.71%	91.94%	94.25%	90.44%	86.08%	89.60%	98.67%	95.31%	97.50%	97.63%	93.39%	95.42%	96.21%
Pine Knoll	99.39%	98.12%	97.72%	93.92%	96.83%	98.11%	98.28%	97.28%	99.30%	100.65%	98.81%	99.03%	97.61%	97.74%	99.67%	99.52%
Pines at Rutland	91.23%	90.94%	90.88%	92.67%	94.17%	94.32%	94.04%	96.48%	91.35%	93.65%	95.91%	95.95%	94.43%	93.96%	94.21%	96.52%
Prospect	81.59%	85.71%	90.16%	96.01%	95.24%	92.06%	94.01%	95.08%	86.64%	90.48%	93.71%	95.24%	93.65%	98.62%	100.00%	100.00%
Redstone Villa	95.67%	94.95%	92.44%	95.59%	96.88%	92.44%	89.57%	95.11%	94.52%	93.87%	89.52%	94.62%	92.11%	94.84%	97.11%	90.11%
Rowan Court	76.60%	79.03%	83.69%	79.90%	79.71%	85.93%	86.88%	84.46%	86.01%	86.41%	86.16%	86.14%	80.54%	79.22%	82.60%	82.35%
Rutland Healthcare	89.11%	89.28%	89.97%	89.89%	89.28%	91.94%	94.39%	93.62%	95.45%	95.58%	93.87%	93.68%	93.86%	93.78%	94.70%	93.27%
Springfield	85.92%	86.40%	92.94%	91.90%	95.29%	94.74%	90.42%	87.35%	91.62%	87.89%	90.90%	91.08%	87.03%	87.73%	88.89%	89.34%
St. Albans Healthcare	94.22%	88.84%	87.00%	93.04%	92.12%	93.06%	92.42%	95.58%	94.57%	96.40%	95.80%	98.06%	97.19%	95.00%	96.92%	96.08%
St. Johnsbury	93.55%	94.84%	92.15%	91.52%	93.64%	95.21%	93.17%	94.88%	87.30%	93.37%	94.06%	96.07%	93.61%	94.87%	93.94%	90.41%
Starr Farm	96.96%	95.72%	97.62%	97.59%	95.18%	94.98%	96.62%	96.56%	93.87%	94.34%	93.83%	92.84%	93.91%	93.53%	92.91%	93.33%
The Manor	94.08%	94.19%	93.50%	96.05%	96.85%	97.00%	98.39%	97.75%	98.31%	98.47%	96.34%	95.48%	85.92%	96.77%	97.58%	97.50%
Thompson House	96.74%	99.40%	99.38%	97.75%	95.20%	92.17%	94.22%	97.13%	97.00%	94.45%	93.27%	91.22%	93.41%	91.82%	90.85%	96.02%
Union House	94.62%	96.26%	93.33%	95.09%	90.03%	94.55%	92.60%	88.79%	90.98%	89.66%	93.43%	95.31%	94.70%	93.99%	91.59%	90.62%
Vernon Green	93.56%	95.48%	101.00%	99.09%	96.56%	96.83%	99.03%	100.17%	100.00%	99.35%	99.05%	98.23%	98.94%	98.33%	97.61%	97.74%
Veterans Home	82.19%	85.05%	86.85%	86.85%	86.47%	86.34%	82.59%	81.99%	82.07%	81.59%	84.76%	83.78%	83.84%	84.85%	85.58%	84.69%
Woodridge	94.90%	95.93%	95.32%	94.56%	97.05%	97.47%	96.58%	97.76%	95.34%	93.86%	94.77%	93.00%	90.74%	96.23%	96.23%	95.40%
Totals	89.23%	89.49%	90.22%	90.78%	90.87%	91.59%	91.59%	91.50%	90.67%	91.19%	91.50%	90.90%	90.42%	90.40%	91.43%	91.27%

**YTD Utilization- Based on Capacity**

Division of Rate Setting Schedule of Reported Resident

**Low Occupancy Indicators**

6

Between 90% and 85%

Between 85% and 80%

Between 80% and 50%

	8	9	10	11	12	1	2	3	4	5	6	7	8	9	10	11
Nursing Home	Aug-06	Sep-06	Oct-06	Nov-06	Dec-06	Jan-07	Feb-07	Mar-07	Apr-07	May-07	Jun-07	Jul-07	Aug-07	Sep-07	Oct-07	Nov-07
Bel-Aire	95.75%	93.41%	94.65%	96.59%	95.09%	95.38%	93.59%	93.62%	96.06%	94.94%	96.21%	93.99%	90.03%	96.21%	94.87%	97.27%
Bennington	89.81%	86.63%	85.97%	89.30%	87.16%	92.45%	90.54%	92.77%	91.10%	91.13%	92.07%	90.32%	90.42%	90.43%	94.06%	90.70%
Berlin	78.71%	81.49%	84.68%	82.85%	83.96%	84.38%	84.96%	85.12%	84.82%	83.21%	83.20%	83.49%	84.00%	85.68%	83.28%	82.21%
Birchwood Terrace	96.61%	95.79%	96.27%	97.17%	93.23%	93.69%	93.79%	90.93%	93.15%	93.81%	95.98%	95.04%	93.95%	94.46%	92.58%	92.19%
Brookside-WRJ	90.85%	88.91%	82.91%	93.58%	90.32%	94.75%	95.36%	93.07%	93.93%	92.39%	91.99%	92.83%	92.39%	92.49%	87.29%	90.85%
Burlington	74.14%	72.72%	95.08%	93.57%	93.86%	93.16%	92.15%	91.83%	92.51%	89.14%	89.97%	91.07%	89.12%	94.66%	91.30%	90.13%
Cedar Hill	99.83%	101.62%	98.59%	95.04%	96.11%	98.59%	102.29%	101.49%	98.46%	99.17%	98.97%	97.44%	95.53%	99.15%	100.00%	101.28%
Centers for Living & Rehab	94.54%	92.11%	91.61%	90.82%	87.83%	90.88%	88.50%	92.73%	91.47%	92.37%	89.62%	90.90%	89.78%	88.73%	92.19%	93.20%
Crescent Manor	96.06%	96.96%	93.41%	93.63%	92.65%	92.26%	93.25%	94.91%	94.85%	94.62%	96.48%	98.82%	96.38%	96.85%	97.35%	94.11%
Derby Green	98.32%	98.99%	100.00%	98.41%	100.00%	100.00%	100.00%	100.00%	100.00%	99.86%	99.86%	99.02%	97.76%	100.00%	99.44%	100.00%
Franklin County Rehab	96.22%	94.32%	93.90%	92.03%	91.08%	89.82%	87.83%	90.37%	95.05%	95.56%	93.85%	95.21%	93.09%	95.16%	89.62%	92.71%
Gifford	100.00%	80.14%	91.94%	99.00%	99.68%	99.78%	98.45%	99.57%	100.00%	100.00%	100.00%	96.67%	97.42%	100.00%	98.92%	98.56%
Gill Odd Fellows	97.58%	98.57%	95.16%	86.61%	81.39%	80.76%	81.38%	82.60%	79.82%	77.71%	75.77%	77.88%	71.43%	73.21%	78.92%	76.13%
Green Mountain	95.58%	98.81%	96.20%	91.69%	94.26%	93.99%	91.49%	92.27%	88.63%	95.45%	95.21%	97.75%	96.29%	96.76%	96.20%	95.98%
Greensboro	91.29%	91.44%	94.09%	96.44%	91.72%	95.16%	96.31%	99.14%	93.22%	93.33%	93.67%	92.04%	93.76%	96.00%	91.61%	93.89%
Helen Porter	96.99%	99.02%	95.98%	97.87%	97.02%	96.59%	96.94%	94.65%	95.68%	96.62%	95.30%	98.68%	95.76%	94.73%	93.46%	91.05%
Maple Lane	94.64%	98.08%	99.23%	97.65%	98.05%	98.23%	97.74%	97.00%	99.39%	96.41%	98.17%	97.55%	95.87%	96.43%	100.00%	99.53%
Mayo	98.90%	98.13%	99.23%	96.47%	98.45%	97.03%	97.86%	99.29%	99.13%	99.23%	99.13%	97.68%	91.94%	91.40%	98.71%	98.73%
McGirr	94.30%	89.22%	98.49%	97.56%	98.06%	97.42%	93.57%	96.88%	92.78%	97.53%	100.00%	97.74%	99.03%	94.33%	93.01%	89.44%
Mountain View	91.18%	92.09%	91.84%	90.32%	89.80%	91.55%	92.04%	90.28%	90.06%	89.68%	90.84%	89.39%	81.83%	80.06%	85.78%	86.51%
Mt. Ascutney	96.00%	91.53%	91.23%	93.73%	92.90%	93.68%	92.86%	92.84%	92.33%	92.13%	91.80%	88.19%	88.00%	83.27%	78.84%	78.00%
Newport	72.06%	78.67%	84.06%	89.47%	85.42%	87.48%	90.64%	92.32%	86.67%	86.19%	85.33%	80.71%	77.87%	86.33%	89.10%	90.93%
Pine Heights at Brattleboro	98.15%	99.17%	93.27%	89.75%	92.18%	97.10%	92.10%	97.34%	95.71%	95.24%	93.75%	89.88%	93.10%	97.88%	96.09%	94.46%
Pine Knoll	99.09%	100.06%	99.41%	99.78%	96.88%	98.55%	97.62%	93.33%	94.39%	95.54%	94.72%	98.06%	99.84%	93.17%	96.51%	92.22%
Pines at Rutland	95.02%	95.39%	95.56%	93.57%	91.74%	92.98%	94.57%	91.97%	90.56%	87.79%	85.28%	83.95%	82.76%	80.19%	79.56%	81.36%
Prospect	100.00%	98.41%	100.00%	98.10%	98.46%	94.01%	90.48%	92.01%	99.21%	96.62%	93.97%	90.48%	95.24%	95.24%	95.24%	99.05%
Redstone Villa	98.60%	98.00%	95.48%	97.11%	97.10%	96.02%	89.52%	91.51%	93.11%	95.70%	95.56%	95.05%	90.54%	96.89%	93.33%	94.00%
Rowan Court	85.67%	78.78%	72.83%	79.13%	86.10%	90.01%	88.12%	82.17%	84.29%	81.58%	83.69%	86.07%	86.66%	82.53%	85.42%	85.06%
Rutland Healthcare	93.01%	94.93%	93.85%	92.36%	93.88%	93.35%	93.17%	91.85%	86.93%	88.65%	93.20%	91.03%	91.57%	92.47%	91.97%	92.49%
Springfield	83.05%	83.66%	85.07%	84.44%	89.12%	84.25%	85.15%	83.78%	86.93%	83.90%	83.76%	83.87%	86.78%	86.44%	84.16%	82.12%
St. Albans Healthcare	96.42%	96.97%	98.33%	97.81%	96.85%	95.56%	94.08%	93.06%	92.94%	93.82%	96.94%	95.24%	95.05%	94.50%	95.30%	96.31%
St. Johnsbury	84.69%	81.24%	87.07%	92.79%	93.84%	93.31%	90.26%	88.18%	88.91%	89.09%	81.52%	82.08%	82.52%	88.03%	86.69%	81.45%
Starr Farm	95.31%	96.51%	97.40%	98.02%	94.84%	94.00%	94.64%	96.00%	95.58%	94.45%	98.22%	97.10%	95.59%	95.49%	95.81%	95.62%
The Manor	94.44%	93.83%	95.65%	95.08%	97.10%	97.10%	96.88%	97.90%	99.00%	95.73%	98.17%	99.52%	97.34%	99.50%	97.90%	97.58%
Thompson House	97.67%	96.12%	99.25%	97.36%	97.00%	97.97%	98.01%	96.40%	93.41%	96.25%	96.28%	98.35%	97.60%	98.29%	96.85%	99.38%
Union House	95.23%	91.59%	97.58%	95.68%	96.85%	95.01%	99.92%	99.27%	98.64%	98.75%	98.26%	97.51%	96.33%	98.03%	97.29%	95.98%
Vernon Green	99.30%	100.06%	95.22%	95.56%	97.42%	98.39%	94.40%	94.84%	96.06%	98.71%	97.61%	98.06%	91.88%	95.11%	96.18%	98.39%
Veterans Home	86.69%	86.14%	86.43%	87.25%	86.13%	85.97%	86.06%	86.41%	87.75%	87.34%	87.30%	88.80%	85.83%	85.20%	85.08%	82.32%
Woodridge	94.50%	96.38%	95.66%	92.75%	92.66%	93.34%	89.31%	91.19%	90.26%	89.96%	91.81%	93.67%	93.49%	91.74%	93.74%	90.78%
Totals	91.20%	91.20%	91.93%	91.88%	91.48%	91.03%	91.92%	91.80%	91.66%	91.38%	91.66%	91.63%	90.31%	90.76%	90.94%	90.30%

**YTD Utilization- Based on Capacity**

Division of Rate Setting Schedule of Reported Resident

	<table border="0" style="width:100%; text-align:center;"> <tr> <td colspan="4">Between 90% and 85%</td> <td colspan="4">Between 90% and 85%</td> </tr> <tr> <td colspan="4">Between 85% and 80%</td> <td colspan="4">Between 85% and 80%</td> </tr> <tr> <td colspan="4">Between 80% and 50%</td> <td colspan="4">Between 80% and 50%</td> </tr> </table>												Between 90% and 85%				Between 90% and 85%				Between 85% and 80%				Between 85% and 80%				Between 80% and 50%				Between 80% and 50%			
	Between 90% and 85%				Between 90% and 85%																															
	Between 85% and 80%				Between 85% and 80%																															
	Between 80% and 50%				Between 80% and 50%																															
12	1	2	3	4	5	6	7	8	9	10	11																									
Dec-07	Jan-08	Feb-08	Mar-08	Apr-08	May-08	Jun-08	Jul-08	Aug-08	Sep-08	Oct-08	Nov-08																									
Nursing Home																																				
Bel-Aire	97.36%	95.89%	96.16%	97.95%	96.67%	94.79%	91.89%	91.57%	<b>87.46%</b>	90.00%	90.18%	94.32%																								
Bennington	<b>88.45%</b>	<b>89.39%</b>	90.41%	<b>87.10%</b>	<b>81.90%</b>	<b>80.74%</b>	<b>88.30%</b>	<b>88.68%</b>	<b>86.61%</b>	90.73%	90.16%	<b>87.57%</b>																								
Berlin	<b>82.28%</b>	<b>84.70%</b>	<b>82.49%</b>	<b>80.01%</b>	<b>84.21%</b>	<b>86.09%</b>	<b>78.20%</b>	<b>86.09%</b>	<b>86.09%</b>	<b>81.94%</b>	<b>84.49%</b>	<b>84.40%</b>																								
Birchwood Terrace	93.51%	94.82%	96.88%	95.38%	95.63%	96.88%	95.52%	92.68%	97.14%	97.29%	97.26%	96.58%																								
Brookside-WRJ	90.71%	93.16%	97.27%	94.46%	<b>86.92%</b>	<b>83.15%</b>	<b>87.66%</b>	<b>87.96%</b>	90.66%	91.34%	93.84%	97.26%																								
Burlington	<b>86.89%</b>	<b>87.89%</b>	<b>86.23%</b>	<b>87.74%</b>	<b>87.22%</b>	<b>89.63%</b>	90.03%	91.53%	91.30%	<b>88.76%</b>	92.83%	91.24%																								
Cedar Hill	100.25%	100.08%	99.03%	97.60%	98.38%	98.43%	98.89%	98.76%	97.68%	99.15%	99.01%	98.03%																								
Centers for Living & Rehab	92.84%	92.15%	90.74%	91.51%	<b>86.27%</b>	<b>89.81%</b>	<b>89.69%</b>	93.87%	94.52%	94.53%	93.59%	<b>89.56%</b>																								
Crescent Manor	93.73%	95.41%	97.51%	96.56%	93.00%	90.68%	<b>89.85%</b>	91.58%	95.45%	94.70%	96.09%	95.74%																								
Derby Green	100.00%	100.00%	100.00%	100.00%	100.00%	100.00%	100.00%	99.58%	99.58%	100.00%	100.00%	100.00%																								
Franklin County Rehab	91.83%	94.81%	93.00%	93.85%	93.96%	90.73%	91.51%	93.90%	<b>89.36%</b>	91.20%	94.00%	91.82%																								
Gifford	100.00%	100.00%	99.43%	100.00%	100.00%	100.00%	100.00%	100.00%	96.77%	98.67%	97.20%	96.78%																								
Gill Odd Fellows	93.03%	<b>79.78%</b>	<b>82.82%</b>	<b>79.55%</b>	<b>73.81%</b>	<b>72.87%</b>	<b>72.74%</b>	<b>73.27%</b>	<b>74.88%</b>	<b>76.43%</b>	<b>79.38%</b>	<b>71.61%</b>																								
Green Mountain	92.27%	95.93%	93.34%	94.61%	<b>87.44%</b>	92.62%	91.96%	<b>87.36%</b>	94.56%	95.84%	97.17%	94.34%																								
Greensboro	95.38%	91.94%	92.87%	97.53%	98.00%	92.69%	96.44%	94.62%	94.73%	98.67%	99.78%	98.44%																								
Helen Porter	93.52%	95.94%	93.10%	91.06%	96.41%	95.24%	93.21%	97.20%	97.94%	97.90%	96.80%	96.70%																								
Maple Lane	98.36%	97.59%	98.49%	97.64%	96.76%	92.55%	90.80%	<b>86.64%</b>	<b>88.91%</b>	<b>89.53%</b>	93.91%	95.45%																								
Mayo	98.26%	99.68%	99.45%	97.03%	96.93%	98.26%	98.53%	98.19%	99.10%	100.00%	98.90%	99.60%																								
McGirr	90.11%	<b>88.71%</b>	91.49%	<b>85.81%</b>	<b>87.11%</b>	<b>85.48%</b>	91.78%	93.55%	95.16%	96.44%	94.41%	94.11%																								
Mountain View	<b>85.06%</b>	<b>89.29%</b>	<b>88.95%</b>	<b>87.27%</b>	<b>85.84%</b>	<b>84.98%</b>	<b>83.96%</b>	<b>85.85%</b>	<b>89.53%</b>	<b>89.52%</b>	<b>87.25%</b>	<b>89.70%</b>																								
Mt. Ascutney	<b>72.52%</b>	100.00%	95.17%	91.43%	91.43%	91.43%	91.43%	91.43%	91.43%	<b>89.05%</b>	98.65%	96.77%																								
Newport	96.58%	93.29%	92.83%	92.77%	93.40%	<b>88.90%</b>	90.87%	<b>86.97%</b>	<b>82.97%</b>	<b>86.40%</b>	<b>80.06%</b>	<b>85.67%</b>																								
Pine Heights at Brattleboro	97.78%	97.90%	94.35%	93.55%	94.63%	91.05%	<b>89.21%</b>	92.22%	96.57%	92.50%	93.67%	93.88%																								
Pine Knoll	90.81%	92.10%	<b>89.02%</b>	94.03%	95.56%	96.40%	96.67%	<b>88.92%</b>	<b>87.63%</b>	<b>86.67%</b>	96.61%	90.83%																								
Pines at Rutland	<b>79.10%</b>	<b>80.26%</b>	<b>81.30%</b>	<b>79.07%</b>	<b>82.08%</b>	<b>78.22%</b>	<b>79.57%</b>	<b>81.32%</b>	<b>85.06%</b>	<b>84.19%</b>	<b>81.99%</b>	<b>84.43%</b>																								
Prospect	100.00%	96.01%	95.24%	93.86%	95.08%	95.55%	94.29%	98.00%	98.00%	96.67%	94.93%	96.35%																								
Redstone Villa	97.10%	96.67%	97.47%	93.01%	95.00%	93.23%	95.67%	96.67%	92.80%	92.00%	93.98%	98.00%																								
Rowan Court	<b>86.20%</b>	<b>85.05%</b>	<b>85.08%</b>	<b>84.21%</b>	92.50%	94.05%	92.47%	91.43%	94.22%	98.19%	97.45%	94.44%																								
Rutland Healthcare	91.82%	92.58%	94.33%	91.41%	93.99%	<b>87.38%</b>	90.68%	90.98%	93.62%	95.64%	93.40%	<b>87.80%</b>																								
Springfield	<b>85.20%</b>	<b>84.57%</b>	<b>80.43%</b>	<b>79.89%</b>	<b>83.07%</b>	<b>89.25%</b>	<b>88.17%</b>	<b>80.55%</b>	<b>83.78%</b>	<b>83.20%</b>	<b>89.78%</b>	<b>89.71%</b>																								
St. Albans Healthcare	92.72%	91.40%	91.75%	91.32%	<b>86.28%</b>	<b>82.07%</b>	<b>83.22%</b>	<b>87.50%</b>	<b>89.54%</b>	<b>86.08%</b>	<b>83.84%</b>	<b>80.36%</b>																								
St. Johnsbury	<b>83.49%</b>	<b>84.57%</b>	<b>89.78%</b>	90.53%	91.67%	<b>87.21%</b>	<b>83.24%</b>	<b>84.28%</b>	<b>84.13%</b>	<b>84.52%</b>	<b>87.80%</b>	<b>89.91%</b>																								
Starr Farm	97.85%	97.42%	98.39%	95.57%	96.02%	97.38%	92.87%	92.41%	94.77%	96.87%	95.29%	94.67%																								
The Manor	98.71%	98.23%	98.97%	98.79%	98.00%	98.87%	97.25%	98.48%	98.21%	96.85%	99.10%	99.07%																								
Thompson House	90.92%	96.02%	96.79%	97.15%	93.80%	94.67%	93.41%	93.25%	98.35%	97.98%	98.20%	98.22%																								
Union House	97.21%	96.55%	96.16%	95.16%	99.77%	99.71%	97.27%	95.45%	93.77%	94.62%	97.07%	94.24%																								
Vernon Green	99.68%	98.98%	99.94%	97.74%	96.22%	97.85%	96.78%	96.29%	99.57%	99.56%	99.46%	96.94%																								
Veterans Home	<b>79.56%</b>	<b>83.58%</b>	<b>87.12%</b>	<b>87.41%</b>	<b>88.59%</b>	<b>86.08%</b>	<b>89.19%</b>	<b>89.87%</b>	91.31%	90.94%	91.29%	90.73%																								
Woodridge	<b>88.24%</b>	91.44%	93.40%	93.97%	93.57%	90.93%	92.51%	90.89%	92.79%	94.90%	93.30%	93.92%																								
Totals	90.15%	91.35%	91.60%	90.71%	90.67%	<b>89.90%</b>	<b>89.67%</b>	<b>90.17%</b>	<b>91.66%</b>	<b>91.82%</b>	<b>92.37%</b>	<b>91.64%</b>																								

**YTD Utilization- Based on Capacity**

Division of Rate Setting Schedule of Reported Resident

	Between 90% and 85%						Between 90% and 85%				
	Between 85% and 80%						Between 85% and 80%				
	Between 80% and 50%						Between 80% and 50%				
Nursing Home	12 Dec-08	1 Jan-09	2 Feb-09	3 Mar-09	4 Apr-09	5 May-09	6 Jun-09	7 Jul-09	8 Aug-09	9 Sep-09	10 Oct-09
Bel-Aire	88.20%	88.42%	87.50%	94.35%	94.70%	95.67%	97.73%	94.57%	94.21%	96.89%	97.43%
Bennington	87.87%	90.81%	92.89%	90.35%	89.07%	87.52%	90.23%	88.58%	86.10%	88.37%	88.39%
Berlin	84.15%	82.66%	79.46%	77.17%	80.00%	83.07%	81.99%	78.61%	81.42%	79.98%	79.84%
Birchwood Terrace	95.54%	95.91%	94.84%	94.88%	97.67%	96.47%	95.56%	97.24%	96.37%	97.48%	95.93%
Brookside-WRJ	97.21%	97.06%	93.18%	93.31%	89.15%	91.04%	92.69%	93.93%	95.09%	94.78%	90.03%
Burlington	89.61%	91.78%	89.43%	86.30%	88.36%	84.13%	81.77%	84.10%	86.30%	85.03%	86.71%
Cedar Hill	98.26%	98.35%	98.81%	99.09%	97.18%	98.10%	94.27%	97.35%	95.62%	102.56%	98.35%
Centers for Living & Rehab	90.30%	95.16%	88.71%	90.62%	86.49%	86.52%	85.24%	81.20%	79.94%	80.22%	81.53%
Crescent Manor	92.44%	93.41%	94.92%	93.44%	91.78%	90.90%	91.30%	96.09%	98.28%	96.44%	95.09%
Derby Green	98.18%	99.30%	97.83%	100.00%	100.00%	99.86%	98.99%	100.00%	100.00%	100.00%	100.00%
Franklin County Rehab	93.95%	96.52%	95.93%	96.57%	93.18%	93.40%	94.32%	90.88%	93.65%	87.50%	89.77%
Gifford	93.66%	96.67%	99.29%	98.71%	99.67%	100.00%	99.78%	98.92%	99.46%	99.78%	100.00%
Gill Odd Fellows	75.69%	76.56%	78.76%	80.24%	84.94%	91.36%	81.49%	86.35%	85.37%	79.82%	78.63%
Green Mountain	91.52%	92.05%	91.59%	94.92%	96.30%	93.11%	92.37%	95.58%	91.87%	91.87%	88.73%
Greensboro	97.96%	97.42%	93.45%	94.09%	95.89%	97.63%	100.00%	99.25%	97.20%	94.44%	90.32%
Helen Porter	94.29%	91.86%	91.60%	94.90%	94.44%	91.27%	92.57%	96.62%	96.68%	95.59%	91.71%
Maple Lane	94.09%	95.05%	97.59%	95.37%	88.69%	88.19%	83.52%	86.05%	92.87%	96.90%	97.18%
Mayo	99.35%	99.48%	98.57%	98.58%	99.47%	98.19%	99.87%	99.23%	98.77%	99.27%	99.61%
McGirr	94.30%	96.02%	97.14%	98.82%	89.33%	92.80%	91.22%	88.28%	74.41%	74.33%	85.27%
Mountain View	88.67%	88.50%	88.51%	90.56%	89.46%	88.50%	86.97%	93.73%	95.59%	97.00%	96.61%
Mt. Ascutney	94.48%	91.47%	90.32%	90.32%	98.45%	92.74%	88.45%	97.81%	97.42%	100.00%	100.00%
Newport	81.68%	77.48%	78.93%	78.58%	81.00%	80.13%	83.67%	82.65%	82.97%	84.13%	86.71%
Pine Heights at Brattleboro	91.09%	89.11%	89.64%	88.79%	90.29%	91.33%	90.21%	88.75%	86.65%	87.71%	88.95%
Pine Knoll	92.90%	97.69%	90.95%	87.74%	84.06%	86.61%	85.39%	89.09%	88.49%	88.67%	88.49%
Pines at Rutland	88.62%	89.26%	88.89%	91.17%	90.08%	87.25%	86.35%	92.08%	93.26%	96.91%	96.44%
Prospect	98.46%	100.00%	91.50%	89.55%	84.76%	90.63%	87.14%	96.93%	94.78%	89.68%	93.70%
Redstone Villa	87.20%	92.47%	91.67%	89.89%	93.11%	99.35%	95.33%	95.81%	94.62%	83.78%	85.38%
Rowan Court	92.81%	96.30%	95.09%	96.30%	96.81%	93.68%	95.31%	93.45%	93.01%	93.37%	93.95%
Rutland Healthcare	86.44%	88.06%	88.25%	92.23%	91.92%	92.53%	88.24%	91.24%	88.62%	91.21%	90.45%
Springfield	88.93%	88.24%	85.22%	89.94%	91.18%	89.78%	85.78%	83.08%	81.56%	85.07%	83.62%
St. Albans Healthcare	81.21%	82.77%	86.28%	84.60%	81.06%	75.38%	78.97%	87.18%	87.82%	85.97%	84.25%
St. Johnsbury	87.27%	81.06%	87.53%	91.32%	91.76%	88.15%	90.18%	88.33%	82.61%	80.58%	88.12%
Starr Farm	95.85%	97.10%	95.48%	94.09%	96.56%	94.60%	94.38%	94.80%	95.83%	94.80%	94.58%
The Manor	99.73%	98.79%	99.21%	99.01%	97.82%	98.84%	98.19%	99.28%	97.72%	99.63%	98.52%
Thompson House	98.12%	97.37%	96.76%	96.62%	97.36%	96.77%	92.09%	94.67%	98.27%	97.91%	95.27%
Union House	97.51%	96.26%	96.02%	92.89%	95.83%	92.23%	93.11%	92.30%	93.04%	94.17%	94.06%
Vernon Green	99.68%	97.58%	97.26%	98.49%	98.72%	97.10%	92.28%	94.73%	97.80%	99.50%	97.74%
Veterans Home	89.30%	88.34%	86.60%	88.30%	87.80%	86.73%	86.21%	87.52%	87.63%	86.42%	86.97%
Woodridge	94.14%	94.50%	92.09%	90.30%	94.62%	94.05%	93.29%	93.15%	96.18%	93.07%	95.80%
Totals	91.11%	91.50%	90.74%	91.19%	91.21%	90.34%	89.53%	90.50%	90.54%	90.81%	90.84%



**YTD Utilization- Based on Capacity**

Division of Rate Setting Schedule of Reported Resident

	<div style="display: flex; justify-content: space-between;"> <span>Between 90% and 85%</span> <span>Between 90% a</span> </div> <div style="display: flex; justify-content: space-between;"> <span>Between 85% and 80%</span> <span>Between 85% a</span> </div> <div style="display: flex; justify-content: space-between;"> <span>Between 80% and 50%</span> <span>Between 80% a</span> </div>									
	11	12	1	2	3	4	5	6	7	8
	Nov-09	Dec-09	Jan-10	Feb-10	Mar-10	Apr-10	May-10	Jun-10	Jul-10	Aug-10
Nursing Home										
Bel-Aire	96.44%	95.53%	92.82%	96.19%	94.72%	90.23%	92.30%	93.86%	94.21%	95.75%
Bennington	90.13%	89.55%	89.10%	84.82%	89.87%	88.40%	85.13%	85.83%	87.87%	85.29%
Berlin	80.38%	75.82%	84.49%	80.55%	84.15%	80.52%	78.79%	80.69%	82.52%	84.33%
Birchwood Terrace	96.92%	90.89%	90.44%	90.20%	86.83%	91.20%	87.51%	93.04%	92.30%	89.40%
Brookside-WRJ	90.50%	89.65%	89.65%	92.00%	87.77%	86.07%	81.51%	81.59%	86.23%	84.26%
Burlington	82.14%	80.82%	84.23%	84.58%	85.23%	87.57%	89.89%	94.52%	89.94%	90.66%
Cedar Hill	99.74%	98.68%	93.22%	92.12%	95.62%	95.47%	94.79%	95.30%	95.12%	92.06%
Centers for Living & Rehab	84.38%	87.89%	92.47%	89.26%	87.66%	80.78%	79.66%	79.20%	82.39%	82.58%
Crescent Manor	95.52%	94.30%	95.16%	95.36%	92.72%	94.78%	90.22%	93.48%	94.70%	95.09%
Derby Green	100.00%	99.86%	100.00%	100.00%	100.00%	99.86%	99.44%	100.00%	100.00%	99.58%
Franklin County Rehab	91.15%	87.75%	94.30%	91.52%	85.84%	88.33%	87.85%	92.71%	96.22%	95.31%
Gifford	103.33%	99.25%	87.31%	100.00%	99.14%	99.22%	99.14%	98.00%	100.00%	99.68%
Gill Odd Fellows	71.67%	77.94%	82.20%	84.57%	79.61%	77.38%	74.31%	77.44%	77.71%	80.47%
Green Mountain	95.71%	95.63%	94.30%	93.00%	94.03%	93.29%	90.99%	88.49%	87.63%	85.06%
Greensboro	94.00%	91.61%	93.33%	90.60%	90.75%	92.56%	93.44%	92.22%	91.51%	94.62%
Helen Porter	90.54%	91.34%	92.75%	96.05%	91.03%	90.25%	89.43%	88.10%	88.60%	92.72%
Maple Lane	96.57%	95.68%	92.69%	94.57%	95.09%	91.60%	91.64%	94.13%	97.36%	97.68%
Mayo	98.93%	99.74%	98.19%	96.57%	98.71%	97.20%	92.97%	97.60%	98.13%	98.45%
McGirr	88.44%	85.16%	96.99%	93.10%	91.40%	90.44%	85.91%	87.33%	78.71%	77.20%
Mountain View	93.35%	93.51%	94.32%	93.04%	91.26%	89.77%	89.85%	89.43%	90.57%	90.98%
Mt. Ascutney	98.53%	99.61%	98.32%	98.71%	100.00%	98.00%	99.10%	95.73%	98.58%	100.00%
Newport	91.07%	90.58%	87.94%	91.07%	92.06%	92.47%	88.77%	89.07%	89.35%	84.71%
Pine Heights at Brattleboro	86.71%	88.39%	88.55%	91.83%	89.44%	90.50%	92.18%	94.38%	86.98%	86.41%
Pine Knoll	86.67%	87.15%	88.76%	82.32%	90.43%	87.67%	88.12%	78.61%	84.03%	86.56%
Pines at Rutland	92.24%	92.10%	92.65%	91.40%	92.72%	91.39%	90.66%	89.36%	94.19%	90.81%
Prospect	100.00%	100.00%	97.24%	99.49%	97.54%	96.67%	98.31%	100.00%	96.47%	95.24%
Redstone Villa	91.44%	93.55%	91.08%	91.79%	94.62%	84.56%	86.24%	88.78%	88.60%	89.14%
Rowan Court	95.35%	94.02%	93.48%	91.93%	95.60%	96.39%	97.61%	95.52%	97.55%	95.60%
Rutland Healthcare	90.03%	90.50%	86.13%	86.14%	86.97%	83.31%	83.95%	86.04%	89.06%	90.35%
Springfield	81.14%	76.63%	77.32%	81.69%	85.83%	81.27%	75.33%	72.39%	78.87%	83.30%
St. Albans Healthcare	84.22%	81.85%	84.27%	80.27%	76.05%	75.91%	75.99%	82.52%	86.51%	85.81%
St. Johnsbury	86.42%	84.19%	82.38%	89.06%	89.77%	88.94%	88.33%	85.48%	88.48%	89.94%
Starr Farm	95.64%	91.70%	93.66%	92.02%	88.28%	88.11%	88.62%	87.27%	90.09%	92.15%
The Manor	97.82%	96.51%	98.12%	98.46%	98.12%	99.33%	98.66%	98.80%	98.97%	99.28%
Thompson House	94.19%	95.12%	94.82%	95.68%	92.95%	91.86%	99.55%	99.84%	97.90%	99.02%
Union House	96.67%	99.12%	95.82%	96.59%	97.07%	98.03%	95.89%	94.47%	97.58%	98.31%
Vernon Green	95.44%	93.66%	98.12%	91.31%	94.41%	94.72%	90.27%	90.67%	99.95%	99.57%
Veterans Home	86.93%	85.26%	84.02%	81.64%	81.61%	83.69%	83.80%	81.98%	83.11%	83.76%
Woodridge	93.01%	91.78%	92.30%	94.58%	94.29%	94.47%	92.03%	93.44%	94.01%	94.39%
Totals	90.55%	89.44%	90.17%	89.84%	89.58%	88.77%	87.78%	88.37%	89.86%	90.03%

**YTD Utilization- Based on Capacity**

Division of Rate Setting Schedule of Reported Resident

	and 85%	Between 90% and 85%			Between 90% and 85%					
	and 80%	Between 85% and 80%			Between 85% and 80%					
	and 50%	Between 80% and 50%			Between 80% and 50%					
Nursing Home	9 Sep-10	10 Oct-10	11 Nov-10	12 Dec-10	1 Jan-11	2 Feb-11	3 Mar-11	4 Apr-11	5 May-11	6 Jun-11
Bel-Aire	95.83%	93.55%	91.52%	88.86%	88.49%	86.77%	84.75%	84.02%	89.44%	92.58%
Bennington	80.60%	86.42%	87.43%	85.61%	83.32%	85.07%	83.23%	84.13%	83.06%	84.27%
Berlin	86.41%	83.12%	84.00%	73.03%	73.16%	77.81%	79.18%	75.74%	73.16%	77.16%
Birchwood Terrace	93.69%	92.58%	90.02%	91.74%	91.35%	95.69%	92.86%	96.30%	93.50%	94.47%
Brookside-WRJ	89.25%	90.80%	87.81%	87.96%	89.26%	87.05%	84.30%	83.23%	75.40%	80.15%
Burlington	91.67%	89.53%	86.59%	79.57%	87.33%	90.84%	89.71%	88.31%	84.25%	86.48%
Cedar Hill	92.74%	97.19%	98.63%	92.89%	87.26%	97.07%	96.36%	95.47%	91.73%	87.35%
Centers for Living & Rehab	86.00%	79.68%	77.98%	82.65%	85.48%	82.57%	84.82%	83.67%	80.58%	80.24%
Crescent Manor	94.85%	93.66%	92.56%	88.28%	86.88%	85.91%	85.20%	84.70%	85.09%	86.85%
Derby Green	100.00%	99.58%	100.00%	100.00%	99.58%	100.00%	100.00%	100.00%	99.86%	98.12%
Franklin County Rehab	92.29%	92.89%	91.15%	89.31%	91.94%	90.57%	87.45%	91.25%	92.19%	89.58%
Gifford	99.22%	100.00%	100.00%	98.71%	100.00%	100.00%	98.06%	99.22%	100.00%	98.67%
Gill Odd Fellows	83.15%	81.05%	78.45%	82.26%	89.97%	75.70%	72.09%	74.71%	73.21%	79.06%
Green Mountain	83.06%	83.83%	89.36%	91.47%	88.91%	93.69%	91.25%	88.31%	87.01%	88.77%
Greensboro	92.22%	88.49%	92.56%	95.27%	93.76%	87.14%	90.65%	90.67%	96.88%	96.22%
Helen Porter	94.92%	88.57%	85.75%	89.06%	90.08%	96.46%	93.64%	87.97%	87.53%	88.98%
Maple Lane	95.54%	94.68%	93.10%	92.64%	89.91%	94.11%	90.60%	87.84%	88.01%	89.20%
Mayo	99.07%	99.29%	100.00%	97.68%	99.10%	99.43%	96.97%	96.73%	97.74%	99.07%
McGirr	76.22%	76.77%	78.56%	82.69%	86.88%	89.29%	88.71%	83.78%	79.03%	77.11%
Mountain View	89.83%	90.49%	88.38%	90.91%	90.67%	91.23%	90.02%	89.92%	86.32%	86.24%
Mt. Ascutney	99.47%	99.10%	98.80%	100.00%	98.84%	95.86%	97.81%	98.53%	100.00%	100.00%
Newport	84.60%	86.13%	90.80%	90.39%	90.65%	88.57%	89.03%	83.07%	83.48%	85.60%
Pine Heights at Brattleboro	85.46%	87.74%	81.79%	75.24%	73.99%	81.61%	87.90%	82.71%	86.29%	85.42%
Pine Knoll	89.11%	88.06%	83.50%	81.29%	78.71%	80.18%	74.68%	74.78%	64.57%	68.06%
Pines at Rutland	87.92%	87.54%	90.00%	96.05%	96.18%	92.03%	94.19%	93.17%	92.28%	91.63%
Prospect	95.56%	90.48%	90.63%	90.48%	94.78%	94.73%	95.85%	92.22%	92.01%	84.76%
Redstone Villa	93.11%	91.51%	91.89%	87.10%	84.30%	89.52%	93.55%	90.56%	93.01%	85.44%
Rowan Court	97.19%	95.50%	93.26%	94.49%	92.64%	94.42%	91.80%	92.29%	90.46%	91.88%
Rutland Healthcare	86.04%	88.80%	87.32%	85.63%	88.72%	87.37%	84.87%	85.99%	86.83%	82.68%
Springfield	83.89%	83.59%	87.39%	84.47%	84.03%	83.51%	87.13%	88.50%	86.46%	84.02%
St. Albans Healthcare	82.29%	80.39%	75.97%	70.66%	70.15%	73.48%	62.86%	63.97%	71.16%	71.13%
St. Johnsbury	91.21%	91.55%	88.45%	84.96%	87.42%	81.46%	82.58%	81.24%	78.86%	81.79%
Starr Farm	90.64%	92.45%	91.13%	88.77%	88.77%	90.79%	87.94%	90.98%	90.11%	87.62%
The Manor	94.63%	98.25%	96.39%	94.62%	98.21%	96.43%	98.34%	98.84%	96.73%	97.69%
Thompson House	96.67%	94.75%	96.67%	95.12%	94.52%	97.26%	94.37%	94.34%	95.65%	96.90%
Union House	96.29%	96.48%	96.97%	95.60%	93.48%	92.21%	90.18%	93.56%	92.08%	93.86%
Vernon Green	92.06%	87.31%	87.39%	85.38%	87.85%	89.76%	87.96%	92.44%	95.54%	95.22%
Veterans Home	81.15%	81.30%	82.98%	81.98%	82.19%	83.11%	83.14%	85.42%	86.86%	88.27%
Woodridge	96.19%	93.59%	93.66%	91.25%	90.30%	89.31%	88.24%	86.91%	85.28%	87.41%
Totals	89.70%	89.04%	88.27%	87.03%	87.52%	88.24%	87.19%	86.94%	86.02%	86.55%



**YTD Utilization- Based on Capacity**

Division of Rate Setting Schedule of Reported Resident

Between 90% and 85%

Between 85% and 80%

Between 80% and 50%

Nursing Home	7 Jul-11	8 Aug-11	9 Sep-11	10 Oct-11	11 Nov-11	12 Dec-11	1 Jan-12	2 Feb-12	3 Mar-12	4 Apr-12
Bel-Aire	88.42%	82.77%	92.50%	85.70%	79.09%	88.12%	88.49%	92.01%	84.46%	86.97%
Bennington	84.68%	84.90%	88.93%	84.94%	84.90%	80.06%	84.94%	86.93%	83.65%	83.83%
Berlin	77.12%	79.30%	79.36%	78.52%	79.55%	78.56%	80.39%	80.56%	80.99%	83.52%
Birchwood Terrace	96.42%	96.73%	96.27%	93.21%	93.54%	94.22%	94.22%	99.43%	93.79%	94.05%
Brookside-WRJ	74.29%	79.97%	85.72%	83.63%	80.60%	89.31%	90.27%	81.78%	80.50%	93.78%
Burlington	85.43%	89.61%	91.85%	88.27%	82.51%	87.25%	87.86%	91.60%	86.25%	84.84%
Cedar Hill	89.41%	92.14%	90.26%	91.48%	91.62%	95.78%	90.41%	89.39%	90.32%	102.05%
Centers for Living & Rehab	78.15%	74.22%	77.13%	73.63%	73.49%	69.94%	75.33%	77.15%	77.61%	75.18%
Crescent Manor	88.82%	88.78%	88.48%	86.99%	87.56%	85.84%	86.31%	91.34%	93.01%	91.52%
Derby Green	100.00%	99.16%	98.55%	98.60%	96.23%	98.04%	98.32%	97.30%	99.72%	99.71%
Franklin County Rehab	84.17%	89.72%	90.10%	88.31%	89.43%	93.40%	91.78%	91.49%	90.98%	90.52%
Gifford	100.00%	100.00%	100.00%	98.39%	99.89%	100.00%	93.55%	100.00%	93.55%	96.89%
Gill Odd Fellows	80.58%	81.35%	85.36%	80.01%	77.90%	77.21%	80.08%	71.81%	68.30%	64.42%
Green Mountain	89.39%	90.72%	88.77%	87.05%	86.21%	85.29%	90.63%	90.08%	86.35%	86.94%
Greensboro	97.42%	98.49%	100.00%	96.34%	97.22%	98.06%	95.05%	94.94%	91.29%	90.22%
Helen Porter	86.08%	92.69%	89.78%	92.14%	93.97%	91.21%	92.75%	88.54%	94.90%	95.46%
Maple Lane	85.19%	92.82%	96.01%	95.18%	94.60%	95.82%	95.00%	97.33%	98.55%	97.18%
Mayo	94.58%	95.87%	98.00%	93.68%	93.87%	91.35%	84.39%	80.83%	82.32%	82.47%
McGirr	76.88%	81.72%	87.78%	91.72%	96.11%	98.28%	93.76%	83.79%	70.11%	55.33%
Mountain View	87.91%	88.95%	89.16%	93.57%	93.65%	91.81%	95.12%	93.89%	93.18%	96.86%
Mt. Ascutney	100.00%	97.68%	99.20%	98.84%	98.80%	99.35%	97.29%	98.34%	99.23%	99.73%
Newport	86.26%	89.48%	85.80%	88.97%	85.67%	85.94%	82.77%	77.10%	83.61%	88.87%
Pine Heights at Brattleboro	92.22%	92.58%	96.29%	93.39%	94.29%	98.10%	95.48%	96.64%	99.48%	95.54%
Pine Knoll	73.06%	72.53%	79.67%	77.90%	78.22%	83.92%	80.70%	87.07%	88.71%	90.56%
Pines at Rutland	88.95%	91.56%	91.23%	91.85%	96.21%	96.10%	93.39%	91.23%	91.12%	92.51%
Prospect	83.41%	92.47%	90.63%	90.48%	87.94%	69.43%	30.26%	0.00%	0.00%	0.00%
Redstone Villa	91.29%	89.35%	90.33%	89.35%	90.78%	85.91%	79.25%	78.28%	84.30%	76.22%
Rowan Court	92.78%	96.44%	98.13%	96.37%	93.89%	87.57%	92.34%	92.60%	94.02%	93.82%
Rutland Healthcare	83.32%	81.04%	84.85%	82.22%	84.07%	81.41%	82.66%	81.61%	79.39%	82.95%
Springfield	82.07%	82.54%	82.19%	87.73%	83.40%	81.97%	84.38%	79.68%	80.93%	84.97%
St. Albans Healthcare	72.59%	75.57%	74.06%	76.38%	76.93%	74.81%	73.49%	70.64%	75.43%	76.67%
St. Johnsbury	81.85%	82.87%	84.61%	78.24%	75.30%	80.00%	80.53%	76.99%	75.87%	77.00%
Starr Farm	84.37%	92.49%	89.87%	87.53%	91.07%	87.57%	91.57%	95.52%	94.09%	93.71%
The Manor	99.10%	97.98%	98.01%	97.80%	96.53%	95.74%	97.54%	98.52%	98.52%	98.61%
Thompson House	98.87%	99.25%	97.21%	99.10%	94.11%	92.42%	96.10%	95.99%	98.65%	95.35%
Union House	96.26%	98.39%	88.03%	91.64%	95.15%	96.33%	97.36%	96.94%	98.46%	96.14%
Vernon Green	99.25%	100.05%	98.17%	99.95%	98.44%	98.39%	99.30%	98.05%	97.96%	93.78%
Veterans Home	87.77%	87.15%	85.35%	84.11%	83.24%	81.85%	80.81%	79.52%	80.34%	80.94%
Woodridge	86.17%	87.12%	82.96%	86.84%	86.51%	89.71%	93.78%	91.03%	90.66%	90.22%
Totals	86.39%	87.99%	88.38%	87.61%	87.32%	87.06%	87.69%	87.77%	87.45%	88.01%

**YTD Utilization- Based on Capacity**

Division of Rate Setting Schedule of Reported Resident

	Between 90% and 85%				Between 90% and 85%					
	Between 85% and 80%				Between 85% and 80%					
	Between 80% and 50%				Between 80% and 50%					
Nursing Home	5 May-12	6 Jun-12	7 Jul-12	8 Aug-12	9 Sep-12	10 Oct-12	11 Nov-12	12 Dec-12	1 Jan-13	2 Feb-13
Bel-Aire	92.08%	88.41%	87.24%	77.71%	81.89%	88.86%	84.77%	84.09%	85.19%	84.50%
Bennington	88.32%	85.00%	85.16%	85.55%	82.70%	82.03%	81.93%	80.00%	87.32%	87.36%
Berlin	79.98%	81.32%	79.41%	80.00%	80.73%	80.14%	83.57%	85.15%	82.09%	80.83%
Birchwood Terrace	93.23%	94.75%	95.03%	96.42%	96.62%	94.80%	96.20%	97.89%	96.71%	96.88%
Brookside-WRJ	94.17%	93.08%	95.86%	91.82%	95.07%	95.04%	94.48%	91.57%	91.53%	89.02%
Burlington	89.32%	88.44%	89.99%	92.60%	92.12%	90.12%	92.22%	91.76%	91.99%	91.47%
Cedar Hill	89.25%	86.07%	94.46%	93.88%	90.34%	87.43%	94.96%	89.58%	96.44%	94.41%
Centers for Living & Rehab	73.59%	69.67%	69.18%	68.69%	73.53%	72.80%	71.93%	73.44%	71.57%	73.00%
Crescent Manor	87.49%	87.11%	90.18%	95.20%	89.81%	90.14%	89.04%	87.92%	88.35%	86.75%
Derby Green	99.16%	95.36%	97.19%	97.76%	96.52%	99.02%	100.00%	96.21%	93.55%	94.72%
Franklin County Rehab	88.36%	87.76%	84.98%	84.22%	83.33%	91.68%	91.56%	94.91%	90.47%	90.74%
Gifford	93.55%	98.56%	99.46%	96.77%	100.00%	99.03%	98.67%	98.49%	97.96%	98.45%
Gill Odd Fellows	73.84%	75.22%	74.05%	78.89%	80.58%	84.15%	86.30%	89.97%	86.12%	89.29%
Green Mountain	84.93%	83.97%	89.53%	88.11%	89.27%	89.66%	92.05%	90.46%	92.00%	92.03%
Greensboro	87.42%	86.11%	98.39%	93.33%	90.44%	91.18%	97.33%	96.67%	96.34%	99.17%
Helen Porter	95.27%	95.27%	96.71%	97.08%	92.00%	92.84%	94.63%	89.68%	88.76%	92.72%
Maple Lane	97.73%	99.06%	94.78%	94.96%	95.07%	93.91%	92.54%	95.32%	97.32%	94.22%
Mayo	85.81%	86.40%	87.23%	88.58%	90.00%	87.10%	87.93%	85.55%	96.39%	98.50%
McGirr	0.00%	0.00%	0.00%	0.00%	0.00%	0.00%	0.00%	0.00%	0.00%	0.00%
Mountain View	95.86%	92.53%	94.77%	88.89%	90.89%	95.43%	92.41%	91.53%	89.49%	88.90%
Mt. Ascutney	96.90%	99.07%	98.06%	98.97%	99.33%	97.03%	97.33%	98.84%	101.29%	103.57%
Newport	93.42%	89.73%	95.55%	94.39%	91.00%	88.45%	90.93%	93.03%	91.42%	93.57%
Pine Heights at Brattleboro	90.52%	86.50%	83.83%	87.58%	88.25%	85.44%	91.50%	88.39%	93.10%	91.38%
Pine Knoll	85.91%	85.06%	81.51%	84.62%	91.72%	87.58%	82.22%	88.44%	88.44%	88.81%
Pines at Rutland	91.77%	96.85%	96.95%	94.94%	94.53%	93.14%	93.57%	95.69%	91.51%	88.31%
Prospect	0.00%	0.00%	0.00%	0.00%	0.00%	0.00%	0.00%	0.00%	0.00%	0.00%
Redstone Villa	80.00%	82.89%	79.14%	79.25%	76.89%	81.61%	87.56%	89.35%	79.57%	84.29%
Rowan Court	96.67%	95.66%	91.70%	90.22%	97.26%	96.77%	95.45%	93.85%	96.24%	86.35%
Rutland Healthcare	82.61%	79.59%	79.60%	79.46%	81.79%	79.94%	80.68%	77.58%	79.33%	72.71%
Springfield	87.13%	85.23%	83.08%	82.54%	80.78%	79.95%	86.76%	87.63%	87.44%	86.27%
St. Albans Healthcare	77.25%	77.51%	73.13%	71.89%	76.49%	71.53%	73.19%	72.48%	71.61%	65.47%
St. Johnsbury	71.61%	75.45%	82.84%	84.05%	87.30%	86.63%	85.36%	88.65%	89.35%	83.12%
Starr Farm	92.95%	95.16%	93.20%	93.87%	94.87%	90.84%	92.78%	92.52%	93.16%	93.38%
The Manor	97.09%	99.49%	99.10%	98.88%	97.08%	98.03%	97.04%	99.24%	97.98%	99.55%
Thompson House	95.27%	98.60%	101.58%	95.35%	101.94%	96.70%	97.21%	95.87%	96.17%	96.59%
Union House	96.55%	91.74%	96.26%	97.21%	96.89%	99.41%	96.59%	95.23%	96.11%	95.78%
Vernon Green	91.18%	89.39%	89.46%	86.88%	93.94%	92.42%	96.83%	96.51%	92.74%	93.33%
Veterans Home	79.46%	78.74%	83.68%	80.12%	79.06%	75.91%	74.52%	72.31%	69.87%	71.41%
Woodridge	88.40%	89.41%	87.05%	83.66%	82.77%	86.82%	83.81%	83.85%	86.27%	85.88%
Totals	87.71%	87.36%	87.84%	87.18%	87.97%	87.48%	88.06%	87.90%	87.83%	86.88%

**YTD Utilization- Based on Capacity**

Division of Rate Setting Schedule of Reported Resident

	Between 90% and 85%				Between 90% and 85%					
	Between 85% and 80%				Between 85% and 80%					
	Between 80% and 50%				Between 80% and 50%					
Nursing Home	3 Mar-13	4 Apr-13	5 May-13	6 Jun-13	7 Jul-13	8 Aug-13	9 Sep-13	10 Oct-13	11 Nov-13	12 Dec-13
Bel-Aire	76.98%	88.64%	89.59%	88.94%	95.38%	94.50%	94.77%	97.51%	97.27%	88.93%
Bennington	88.29%	86.57%	83.23%	82.33%	80.29%	84.74%	85.40%	82.90%	78.90%	80.90%
Berlin	82.50%	79.67%	78.04%	76.88%	81.26%	79.64%	81.80%	77.56%	73.22%	72.32%
Birchwood Terrace	94.96%	97.66%	95.16%	96.16%	92.76%	96.01%	94.42%	92.72%	95.42%	93.73%
Brookside-WRJ	88.83%	90.00%	81.08%	81.84%	87.24%	88.25%	91.89%	95.19%	91.49%	89.50%
Burlington	92.29%	89.95%	86.71%	86.22%	90.91%	90.89%	90.58%	92.40%	90.93%	89.91%
Cedar Hill	98.18%	91.71%	99.92%	100.09%	93.88%	95.12%	95.30%	97.02%	93.42%	97.44%
Centers for Living & Rehab	71.81%	67.84%	63.94%	63.04%	63.78%	66.19%	65.60%	64.09%	62.36%	59.59%
Crescent Manor	83.51%	84.74%	84.73%	84.07%	86.77%	84.01%	88.67%	87.42%	86.48%	84.19%
Derby Green	92.29%	98.84%	96.77%	99.28%	98.46%	99.86%	99.57%	99.02%	99.28%	99.02%
Franklin County Rehab	90.68%	89.22%	92.24%	89.64%	93.60%	95.11%	93.59%	95.61%	92.55%	92.94%
Gifford	96.02%	99.67%	99.14%	99.44%	98.92%	99.25%	98.89%	97.42%	99.11%	96.67%
Gill Odd Fellows	87.10%	83.62%	90.04%	89.64%	88.78%	87.31%	91.88%	89.20%	86.96%	88.43%
Green Mountain	91.91%	92.15%	91.74%	89.13%	88.86%	93.06%	89.27%	92.13%	93.33%	92.49%
Greensboro	90.43%	93.33%	94.84%	93.56%	96.02%	96.34%	95.89%	89.46%	85.00%	83.55%
Helen Porter	91.92%	91.24%	89.55%	88.83%	94.78%	90.14%	90.67%	90.54%	89.65%	93.30%
Maple Lane	93.78%	93.00%	90.10%	91.27%	90.00%	94.64%	92.58%	86.10%	90.89%	92.50%
Mayo	97.74%	98.13%	96.52%	97.40%	97.68%	96.77%	97.00%	98.39%	99.27%	98.26%
McGirr	0.00%	0.00%	0.00%	0.00%	0.00%	0.00%	0.00%	0.00%	0.00%	0.00%
Mountain View	85.50%	84.22%	85.79%	79.18%	83.28%	87.73%	90.59%	88.46%	86.84%	88.30%
Mt. Ascutney	94.06%	68.40%	29.16%	23.33%	17.81%	10.97%	0.00%	0.00%	0.00%	0.00%
Newport	86.13%	81.27%	81.94%	77.87%	82.90%	82.39%	88.27%	86.45%	86.27%	83.81%
Pine Heights at Brattleboro	87.26%	86.33%	89.64%	85.50%	80.00%	91.17%	85.54%	81.69%	83.88%	79.19%
Pine Knoll	88.39%	87.44%	91.83%	86.44%	86.51%	88.71%	86.06%	88.44%	92.72%	94.25%
Pines at Rutland	86.66%	85.17%	91.43%	95.25%	95.10%	97.29%	95.68%	96.67%	96.88%	98.04%
Prospect	0.00%	0.00%	0.00%	0.00%	0.00%	0.00%	0.00%	0.00%	0.00%	0.00%
Redstone Villa	80.00%	80.00%	74.73%	88.89%	90.32%	88.17%	92.00%	93.87%	81.78%	70.65%
Rowan Court	88.94%	89.69%	88.68%	79.83%	75.34%	83.80%	85.97%	78.53%	78.33%	72.24%
Rutland Healthcare	73.14%	74.15%	76.16%	75.37%	73.75%	73.91%	74.36%	73.62%	72.30%	77.89%
Springfield	84.69%	83.14%	79.82%	80.98%	83.11%	88.01%	84.54%	78.37%	80.33%	81.15%
St. Albans Healthcare	66.00%	68.61%	69.09%	69.71%	67.71%	72.54%	73.36%	74.39%	72.87%	66.23%
St. Johnsbury	81.67%	81.21%	84.05%	82.94%	84.55%	87.16%	82.76%	84.63%	82.30%	83.70%
Starr Farm	92.34%	92.56%	94.28%	93.67%	92.99%	93.55%	93.69%	91.83%	92.36%	90.54%
The Manor	98.43%	96.90%	98.84%	99.07%	97.04%	98.07%	98.15%	97.49%	98.80%	95.07%
Thompson House	94.75%	100.78%	96.70%	94.73%	91.30%	93.32%	87.21%	89.87%	96.20%	97.45%
Union House	98.53%	98.86%	100.00%	98.48%	94.35%	93.99%	94.85%	98.24%	96.74%	95.23%
Vernon Green	93.98%	91.67%	95.54%	93.61%	92.85%	94.73%	93.72%	96.34%	94.39%	95.32%
Veterans Home	69.42%	67.95%	68.44%	69.43%	73.08%	74.04%	76.12%	76.93%	76.02%	78.44%
Woodridge	88.02%	84.18%	87.90%	89.76%	92.18%	90.41%	90.92%	88.99%	85.80%	90.36%
Totals	85.89%	85.09%	84.97%	84.16%	84.89%	86.54%	87.20%	86.30%	85.50%	85.15%

**YTD Utilization- Based on Capacity**

Division of Rate Setting Schedule of Reported Resident

	1	2	3	4	5	6	7	8	9	10
Nursing Home	Jan-14	Feb-14	Mar-14	Apr-14	May-14	Jun-14	Jul-14	Aug-14	Sep-14	Oct-14
Bel-Aire	89.59%	95.62%	94.72%	95.15%	95.60%	93.86%	93.11%	93.77%	93.18%	97.29%
Bennington	81.61%	81.21%	81.29%	85.57%	87.10%	84.53%	84.61%	85.03%	85.47%	86.90%
Berlin	72.20%	74.37%	74.90%	72.79%	78.52%	77.21%	78.79%	70.46%	72.29%	71.79%
Birchwood Terrace	97.33%	94.97%	90.48%	96.34%	95.18%	94.58%	92.05%	93.08%	93.45%	94.80%
Brookside-WRJ	91.48%	92.86%	85.99%	89.15%	83.39%	85.37%	84.88%	88.54%	90.05%	92.68%
Burlington	90.09%	91.35%	86.79%	90.19%	88.43%	90.11%	89.09%	87.79%	90.13%	88.56%
Cedar Hill	94.87%	95.24%	96.61%	102.56%	94.29%	94.02%	95.70%	94.04%	90.26%	86.77%
Centers for Living & Rehab	60.32%	64.79%	63.40%	66.69%	70.67%	67.53%	65.94%	67.29%	66.60%	78.66%
Crescent Manor	81.76%	82.86%	80.22%	80.63%	80.29%	82.56%	81.65%	77.99%	81.89%	84.37%
Derby Green	99.58%	99.38%	99.72%	100.00%	100.00%	100.00%	99.72%	99.72%	100.00%	99.30%
Franklin County Rehab	92.24%	92.69%	93.50%	92.03%	92.49%	95.63%	94.46%	92.69%	90.57%	91.99%
Gifford	98.92%	99.05%	97.85%	97.11%	97.85%	99.67%	100.00%	96.67%	103.33%	99.35%
Gill Odd Fellows	88.99%	85.64%	91.30%	93.41%	96.56%	87.61%	86.54%	82.61%	83.91%	81.42%
Green Mountain	91.74%	90.31%	89.70%	86.44%	83.52%	88.36%	91.43%	93.15%	92.15%	89.44%
Greensboro	90.32%	93.81%	94.09%	88.00%	85.59%	84.67%	81.40%	90.75%	87.44%	80.22%
Helene Porter	94.96%	93.23%	85.50%	89.27%	91.61%	92.83%	92.26%	93.95%	91.17%	89.89%
Maple Lane	94.18%	93.61%	94.68%	97.23%	93.50%	93.99%	95.23%	97.27%	94.79%	89.05%
Mayo	98.39%	98.50%	97.87%	96.40%	97.29%	98.27%	99.94%	98.13%	96.07%	97.61%
McGirr	0.00%	0.00%	0.00%	0.00%	0.00%	0.00%	0.00%	0.00%	0.00%	0.00%
Mountain View	91.08%	89.40%	90.12%	86.94%	82.79%	89.18%	92.28%	89.10%	91.29%	91.61%
Mt. Ascutney	0.00%	0.00%	0.00%	0.00%	0.00%	0.00%	0.00%	0.00%	0.00%	0.00%
Newport	79.35%	75.07%	77.29%	82.53%	76.32%	78.20%	79.35%	84.84%	80.53%	85.23%
Pine Heights at Brattleboro	81.98%	83.57%	86.25%	85.42%	89.80%	93.04%	95.81%	94.56%	94.33%	92.14%
Pine Knoll	92.58%	96.13%	91.88%	91.39%	92.74%	87.50%	84.03%	82.74%	86.00%	88.12%
Pines at Rutland	97.88%	94.37%	96.13%	92.99%	92.77%	93.71%	95.54%	97.37%	95.81%	93.75%
Prospect	0.00%	0.00%	0.00%	0.00%	0.00%	0.00%	0.00%	0.00%	0.00%	0.00%
Redstone Villa	74.62%	76.31%	77.96%	82.33%	71.08%	78.89%	85.59%	85.81%	82.33%	67.63%
Rowan Court	70.60%	73.14%	72.38%	71.08%	73.62%	71.22%	73.99%	77.52%	76.15%	74.53%
Rutland Healthcare	79.12%	74.59%	74.17%	74.50%	76.58%	73.74%	75.43%	75.95%	75.91%	77.50%
Springfield	81.69%	81.48%	81.53%	81.37%	79.79%	84.87%	87.98%	83.81%	83.66%	85.58%
St. Albans Healthcare	63.79%	67.70%	69.76%	68.93%	65.58%	68.72%	73.10%	74.42%	71.07%	70.66%
St. Johnsbury	86.19%	84.64%	86.60%	86.39%	85.51%	82.42%	85.60%	82.79%	82.24%	81.91%
Starr Farm	90.97%	91.29%	89.78%	91.67%	92.28%	92.07%	91.23%	88.92%	92.58%	91.81%
The Manor	95.83%	96.63%	97.22%	97.50%	97.45%	98.15%	97.72%	99.42%	97.96%	97.54%
Thompson House	98.87%	97.43%	97.90%	99.15%	94.30%	95.12%	98.50%	99.40%	98.29%	95.50%
Union House	98.09%	98.13%	95.31%	93.41%	94.43%	96.74%	94.57%	94.06%	92.95%	92.89%
Vernon Green	93.01%	93.51%	95.00%	99.11%	95.75%	97.72%	95.75%	98.23%	97.39%	93.92%
Veterans Home	76.70%	77.30%	75.14%	74.37%	73.84%	72.59%	70.23%	70.70%	71.35%	72.36%
Woodridge	85.14%	84.36%	80.48%	79.43%	79.55%	85.95%	84.36%	83.26%	81.18%	78.01%
Totals	85.35%	85.46%	84.53%	85.13%	84.81%	85.52%	85.94%	85.52%	85.42%	85.53%

**YTD Utilization- Based on Capacity**

Division of Rate Setting Schedule of Reported Resident

Nursing Home	11 Nov-14	12 Dec-14	1 Jan-15	2 Feb-15	3 Mar-15	4 Apr-15	5 May-15	6 Jun-15	7 Jul-15	8 Aug-15
Bel-Aire	96.29%	90.84%	89.59%	91.23%	91.42%	89.09%	87.46%	87.88%	96.92%	89.30%
Bennington	88.93%	88.00%	82.65%	77.46%	80.68%	78.10%	75.71%	76.17%	77.68%	82.74%
Berlin	73.22%	70.19%	73.30%	75.48%	71.77%	71.65%	70.46%	70.28%	72.43%	71.84%
Birchwood Terrace	96.34%	95.50%	98.16%	96.78%	96.84%	94.07%	91.33%	87.64%	89.09%	88.42%
Brookside-WRJ	92.24%	89.41%	89.31%	92.59%	87.24%	84.23%	82.72%	83.33%	84.69%	85.46%
Burlington	88.02%	94.27%	94.52%	92.77%	92.40%	90.85%	91.07%	89.71%	86.64%	88.56%
Cedar Hill	88.38%	92.80%	89.74%	87.09%	89.16%	92.99%	91.40%	88.63%	84.78%	89.74%
Centers for Living & Rehab	77.72%	75.46%	75.11%	77.01%	71.71%	69.87%	75.96%	77.21%	72.01%	72.70%
Crescent Manor	82.59%	82.62%	81.11%	84.37%	85.81%	80.96%	83.05%	78.81%	80.79%	78.85%
Derby Green	99.42%	100.00%	98.74%	97.98%	95.37%	98.41%	99.16%	98.84%	99.58%	100.00%
Franklin County Rehab	91.88%	93.50%	94.00%	93.75%	96.42%	91.46%	90.47%	95.00%	90.57%	92.84%
Gifford	98.33%	98.49%	96.24%	99.17%	94.95%	97.89%	96.24%	95.67%	100.00%	97.96%
Gill Odd Fellows	80.14%	83.17%	81.35%	81.13%	79.03%	75.58%	75.46%	79.13%	82.89%	83.52%
Green Mountain	87.95%	90.10%	94.21%	90.12%	88.20%	85.98%	85.64%	78.86%	76.58%	90.76%
Greensboro	79.67%	76.77%	83.23%	89.29%	86.67%	89.00%	88.39%	96.22%	91.72%	90.54%
Helen Porter	93.46%	93.95%	95.27%	89.83%	90.38%	85.87%	89.55%	87.81%	88.88%	89.95%
Maple Lane	91.22%	92.37%	92.00%	92.35%	89.10%	90.38%	96.41%	96.85%	96.37%	97.86%
Mayo	98.60%	96.06%	89.68%	87.57%	90.32%	97.40%	94.13%	96.60%	97.03%	96.06%
McGirr	0.00%	0.00%	0.00%	0.00%	0.00%	0.00%	0.00%	0.00%	0.00%	0.00%
Mountain View	86.31%	87.16%	90.08%	89.53%	92.16%	88.16%	89.63%	86.52%	86.08%	85.08%
Mt. Ascutney	0.00%	0.00%	0.00%	0.00%	0.00%	0.00%	0.00%	0.00%	0.00%	0.00%
Newport	80.60%	86.45%	90.45%	88.36%	85.48%	84.20%	86.97%	82.27%	86.26%	95.35%
Pine Heights at Brattleboro	88.29%	95.28%	96.17%	96.74%	93.71%	94.17%	84.48%	83.21%	80.44%	84.07%
Pine Knoll	81.06%	87.58%	91.45%	91.13%	93.87%	92.33%	91.02%	83.83%	86.02%	85.48%
Pines at Rutland	90.69%	91.95%	94.50%	95.37%	95.15%	93.20%	90.53%	92.56%	91.77%	87.82%
Prospect	0.00%	0.00%	0.00%	0.00%	0.00%	0.00%	0.00%	0.00%	0.00%	0.00%
Redstone Villa	73.22%	72.15%	74.09%	69.52%	66.45%	60.56%	60.00%	62.89%	63.98%	64.62%
Rowan Court	67.71%	71.40%	69.89%	68.08%	67.27%	69.31%	65.66%	67.01%	68.88%	70.50%
Rutland Healthcare	73.69%	76.58%	75.58%	79.73%	80.83%	78.48%	78.28%	78.81%	78.08%	80.41%
Springfield	85.49%	81.75%	81.40%	85.40%	86.56%	87.29%	82.86%	85.52%	78.37%	86.34%
St. Albans Healthcare	70.14%	68.27%	69.90%	72.20%	72.15%	71.62%	71.16%	70.78%	64.43%	66.62%
St. Johnsbury	79.09%	80.73%	81.03%	76.88%	82.82%	80.55%	82.82%	82.79%	83.61%	79.79%
Starr Farm	90.60%	93.78%	96.30%	94.67%	92.06%	87.80%	84.41%	86.91%	87.25%	91.16%
The Manor	98.61%	99.06%	97.22%	93.06%	98.03%	99.17%	96.86%	97.73%	98.12%	97.40%
Thompson House	99.77%	95.27%	98.35%	99.34%	96.62%	96.82%	95.95%	94.88%	86.27%	83.57%
Union House	88.86%	89.66%	93.26%	94.07%	93.11%	91.97%	75.81%	85.83%	90.76%	91.64%
Vernon Green	97.72%	94.95%	97.04%	96.73%	95.11%	95.56%	91.51%	91.33%	87.96%	86.61%
Veterans Home	70.94%	70.91%	69.42%	68.34%	68.70%	90.85%	90.62%	90.79%	89.13%	92.38%
Woodridge	85.10%	83.58%	81.32%	75.51%	74.47%	77.06%	74.34%	78.37%	78.58%	77.67%
Totals	84.91%	85.45%	85.90%	85.32%	85.02%	84.93%	83.93%	83.98%	83.39%	84.53%

**YTD Utilization- Based on Capacity**

Division of Rate Setting Schedule of Reported Resident

	Between 90% and 85%									
	Between 85% and 80%									
	Between 80% and 50%									
Nursing Home	9 Sep-15	10 Oct-15	11 Nov-15	12 Dec-15	1 Jan-16	2 Feb-16	3 Mar-16	4 Apr-16	5 May-16	
Bel-Aire	90.83%	90.69%	95.38%	94.94%	89.81%	92.48%	81.74%	86.67%	86.95%	
Bennington	85.17%	86.42%	80.77%	80.52%	82.32%	78.93%	79.32%	78.93%	75.26%	
Berlin	67.90%	72.29%	72.67%	70.33%	70.12%	68.75%	67.92%	65.93%	64.97%	
Birchwood Terrace	91.13%	93.46%	91.55%	90.12%	92.88%	88.34%	94.33%	92.82%	91.69%	
Brookside-WRJ	94.28%	89.26%	93.13%	89.99%	83.53%	78.23%	79.20%	81.59%	80.36%	
Burlington	87.59%	89.91%	91.14%	91.78%	91.30%	86.37%	82.23%	85.71%	85.15%	
Cedar Hill	88.97%	91.40%	94.44%	94.46%	95.37%	96.99%	95.04%	95.47%	90.32%	
Centers for Living & Rehab	69.97%	68.19%	66.05%	73.80%	73.30%	72.52%	71.09%	75.64%	73.75%	
Crescent Manor	77.59%	74.70%	77.00%	78.57%	78.14%	78.20%	80.65%	80.37%	78.42%	
Derby Green	100.00%	99.44%	99.28%	98.88%	100.00%	100.00%	96.91%	99.42%	94.11%	
Franklin County Rehab	90.68%	88.10%	94.43%	93.80%	93.85%	91.33%	92.44%	95.63%	92.39%	
Gifford	100.00%	100.00%	98.00%	99.25%	98.06%	100.00%	97.42%	98.67%	99.14%	
Gill Odd Fellows	87.17%	90.18%	87.25%	85.06%	90.25%	91.23%	88.43%	82.10%	85.97%	
Green Mountain	84.52%	80.95%	80.55%	85.73%	79.45%	77.85%	80.78%	78.86%	79.67%	
Greensboro	97.00%	98.49%	100.00%	96.34%	96.99%	93.45%	95.59%	95.44%	97.42%	
Helen Porter	89.49%	92.66%	87.78%	87.77%	90.29%	88.28%	85.68%	84.67%	85.16%	
Maple Lane	97.28%	94.37%	92.96%	91.87%	88.91%	87.13%	92.50%	91.03%	91.50%	
Mayo	98.73%	99.03%	97.87%	98.13%	98.58%	97.66%	97.87%	98.40%	98.71%	
McGirr	0.00%	0.00%	0.00%	0.00%	0.00%	0.00%	0.00%	0.00%	0.00%	
Mountain View	82.30%	86.22%	77.47%	82.71%	83.73%	84.64%	86.97%	88.86%	88.04%	
Mt. Ascutney	0.00%	0.00%	0.00%	0.00%	0.00%	0.00%	0.00%	0.00%	0.00%	
Newport	94.20%	94.84%	96.00%	94.84%	94.84%	91.10%	90.84%	90.27%	91.61%	
Pine Heights at Brattleboro	77.17%	82.34%	77.13%	81.13%	82.30%	79.57%	77.66%	69.96%	73.15%	
Pine Knoll	91.28%	89.57%	89.50%	90.32%	85.48%	93.39%	92.58%	95.72%	99.73%	
Pines at Rutland	88.13%	93.32%	91.25%	88.62%	89.47%	91.67%	91.07%	91.20%	89.52%	
Prospect	0.00%	0.00%	0.00%	0.00%	0.00%	0.00%	0.00%	0.00%	0.00%	
Redstone Villa	60.22%	57.85%	55.56%	60.54%	59.35%	56.44%	61.83%	57.78%	52.04%	
Rowan Court	72.08%	70.40%	70.35%	69.62%	71.47%	71.91%	70.46%	70.59%	72.78%	
Rutland Healthcare	79.89%	78.89%	76.72%	72.67%	72.31%	72.13%	73.91%	90.61%	90.04%	
Springfield	88.27%	86.56%	85.75%	86.91%	86.37%	86.54%	85.71%	87.94%	81.47%	
St. Albans Healthcare	65.33%	69.51%	71.16%	71.30%	69.31%	65.88%	66.09%	66.38%	67.52%	
St. Johnsbury	83.85%	80.59%	80.33%	79.21%	77.16%	70.78%	74.63%	78.18%	74.46%	
Starr Farm	89.67%	93.70%	90.60%	90.52%	92.43%	91.01%	94.58%	93.53%	91.25%	
The Manor	99.63%	99.24%	99.35%	97.40%	97.49%	97.56%	96.68%	98.56%	97.67%	
Thompson House	84.65%	88.15%	83.10%	89.12%	82.60%	84.68%	85.07%	80.78%	80.27%	
Union House	90.61%	94.21%	93.79%	95.31%	95.09%	93.26%	93.91%	91.52%	92.45%	
Vernon Green	87.50%	88.55%	90.00%	89.57%	93.12%	94.43%	95.81%	94.56%	94.03%	
Veterans Home	93.36%	90.25%	90.85%	92.16%	91.24%	91.96%	93.13%	92.54%	92.38%	
Woodridge	80.98%	84.48%	79.69%	73.50%	80.33%	80.48%	76.20%	76.14%	73.67%	
Totals	84.66%	85.57%	84.24%	84.34%	84.48%	83.37%	83.63%	84.41%	83.46%	



**YTD Utilization- Based on Capacity**

Division of Rate Setting Schedule of Reported Resident

Between 90% and 85%

Between 85% and 80%

Between 80% and 50%

Prepared by  
DRS Manag

	6	7	8	9	10	11	12	1
Nursing Home	Jun-16	Jul-16	Aug-16	Sep-16	Oct-16	Nov-16	Dec-16	Jan-17
Bel-Aire	80.98%	81.67%	76.54%	75.08%	87.68%	89.32%	90.91%	88.64%
Bennington	75.23%	77.68%	80.52%	81.03%	82.74%	82.77%	80.87%	86.78%
Berlin	64.56%	64.81%	63.99%	64.07%	65.80%	67.23%	67.83%	82.72%
Birchwood Terrace	90.35%	88.31%	93.17%	94.40%	94.87%	92.48%	95.00%	96.42%
Brookside-WRJ	81.39%	82.04%	86.33%	83.18%	83.05%	79.40%	79.01%	78.19%
Burlington	85.08%	84.84%	83.90%	88.39%	90.07%	88.84%	88.40%	88.04%
Cedar Hill	92.91%	96.94%	90.82%	88.46%	93.13%	95.21%	89.41%	86.93%
Centers for Living & Rehab	72.05%	72.08%	76.65%	77.51%	72.78%	66.31%	71.99%	74.76%
Crescent Manor	78.74%	79.14%	79.71%	82.85%	82.08%	79.15%	77.38%	72.08%
Derby Green	97.97%	100.00%	99.02%	98.84%	98.60%	94.64%	97.62%	98.88%
Franklin County Rehab	91.30%	92.74%	94.05%	94.64%	93.04%	96.35%	90.83%	93.09%
Gifford	100.00%	100.00%	100.00%	99.22%	100.00%	100.00%	99.35%	94.84%
Gill Odd Fellows	85.94%	91.30%	87.38%	86.45%	94.53%	89.78%	91.80%	85.83%
Green Mountain	82.69%	81.18%	81.88%	79.91%	81.04%	81.37%	79.63%	76.18%
Greensboro	88.00%	87.96%	87.42%	90.44%	88.17%	90.89%	90.97%	90.43%
Helen Porter	87.21%	85.16%	87.96%	84.48%	86.64%	84.25%	85.44%	87.53%
Maple Lane	89.86%	88.28%	87.10%	86.10%	88.05%	88.45%	90.96%	95.09%
Mayo	94.53%	99.10%	97.16%	96.73%	92.52%	93.87%	95.94%	95.42%
McGirr	0.00%	0.00%	0.00%	0.00%	0.00%	0.00%	0.00%	0.00%
Mountain View	88.80%	89.47%	87.36%	86.10%	89.67%	88.76%	90.51%	89.32%
Mt. Ascutney	0.00%	0.00%	0.00%	0.00%	0.00%	0.00%	0.00%	0.00%
Newport	82.27%	78.71%	78.65%	79.33%	80.58%	82.40%	79.61%	78.84%
Pine Heights at Brattleboro	79.33%	76.33%	79.11%	81.29%	80.16%	82.25%	88.02%	92.94%
Pine Knoll	93.50%	92.47%	91.72%	84.11%	81.77%	83.50%	75.00%	73.01%
Pines at Rutland	92.08%	93.68%	93.14%	91.41%	93.91%	90.21%	91.05%	92.88%
Prospect	0.00%	0.00%	0.00%	0.00%	0.00%	0.00%	0.00%	0.00%
Redstone Villa	65.11%	59.78%	69.78%	66.67%	72.80%	73.00%	70.54%	73.87%
Rowan Court	70.66%	68.38%	67.41%	68.96%	66.47%	68.26%	68.35%	70.97%
Rutland Healthcare	90.23%	93.55%	88.73%	89.84%	96.43%	94.82%	91.20%	92.14%
Springfield	84.51%	89.47%	83.59%	84.18%	86.15%	86.31%	81.91%	81.18%
St. Albans Healthcare	66.87%	69.79%	69.00%	67.19%	67.69%	69.19%	69.12%	84.88%
St. Johnsbury	78.64%	75.13%	72.73%	75.76%	78.45%	78.82%	76.04%	82.21%
Starr Farm	88.29%	90.37%	90.00%	88.58%	91.08%	91.33%	90.30%	91.81%
The Manor	98.52%	96.68%	98.57%	99.86%	97.58%	95.88%	97.76%	95.65%
Thompson House	85.50%	85.67%	82.60%	88.76%	84.25%	83.80%	82.82%	81.02%
Union House	94.47%	96.70%	96.19%	97.42%	98.83%	98.86%	99.41%	97.58%
Vernon Green	85.83%	84.19%	84.84%	86.00%	85.81%	82.00%	82.85%	84.84%
Veterans Home	94.74%	93.47%	89.80%	90.62%	91.14%	92.74%	92.16%	90.12%
Woodridge	69.59%	76.05%	74.55%	76.17%	75.63%	81.53%	79.13%	82.46%
Totals	83.28%	83.82%	83.50%	83.70%	84.72%	84.44%	84.19%	86.18%

**Utilization Statistics- Payor source as a % of Total Capacity**

Division of Rate Setting Schedule of Reported Resident Days by the Month  
 Month: March 2017

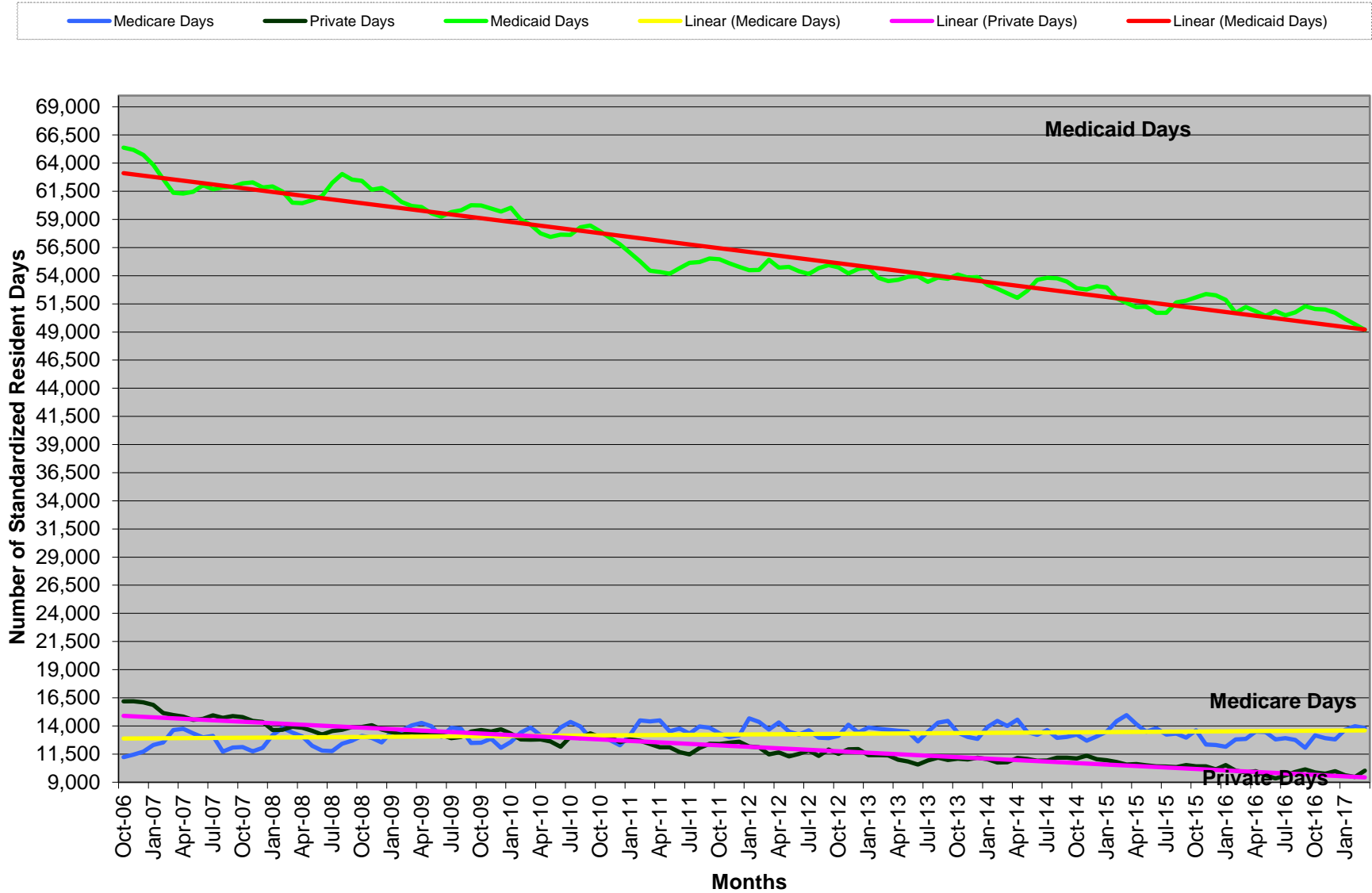
Between 90% and 85%  
 Between 85% and 80%  
 Between 80% and 50%

Nursing Home	Census Month Licensed Capacity	Vermont Medicaid	Out of state Medicaid	Self Pay	Medicare	VHAP Managed Care	Other managed Care	VA	Commercial Insurance	Hospice	Other	Total	Check Column	Difference	Ave. No. of Beds Filled This Month	Ave. No. of Empty Beds This Month	Percent of Empty Beds This Month
Bel-Aire	44	44.65%	0.00%	24.63%	15.25%	0.00%	0.07%	0.00%	0.00%	0.00%	0.00%	84.60%	84.60%	0.00%	37	7	16%
Bennington	91	53.39%	2.52%	7.69%	12.09%	0.00%	2.38%	1.49%	0.00%	4.96%	0.00%	84.51%	84.51%	0.00%	77	14	15%
Berlin	115	59.30%	0.00%	3.81%	17.92%	0.00%	2.30%	0.00%	0.00%	0.90%	0.00%	84.24%	84.24%	0.00%	97	18	16%
Birchwood Terrace	144	66.82%	0.00%	6.14%	10.53%	0.00%	0.34%	2.49%	0.00%	1.50%	0.00%	87.81%	87.81%	0.00%	126	18	13%
Brookside-Bradford	Closed	0.00%	0.00%	0.00%	0.00%	0.00%	0.00%	0.00%	0.00%	0.00%	0.00%	0.00%	0.00%	0.00%			
Brookside-WRJ	67	42.51%	0.00%	18.01%	4.96%	0.00%	0.00%	2.02%	0.00%	4.57%	0.00%	72.08%	72.08%	0.00%	48	19	28%
Burlington	126	38.71%	0.00%	5.27%	30.57%	0.00%	5.86%	0.00%	0.00%	8.55%	0.00%	88.97%	88.97%	0.00%	112	14	11%
Cedar Hill	39	33.33%	0.00%	24.98%	21.92%	0.00%	2.56%	3.89%	1.16%	0.00%	0.00%	87.84%	87.84%	0.00%	34	5	13%
Centers for Living & Rehab	130	37.17%	2.90%	10.52%	20.10%	0.50%	0.00%	0.00%	1.07%	0.00%	0.00%	72.26%	72.26%	0.00%	94	36	28%
Crescent Manor	90	54.37%	4.37%	4.44%	5.34%	0.00%	0.00%	0.00%	0.14%	1.54%	0.00%	70.22%	70.22%	0.00%	63	27	30%
Derby Green	23	87.80%	0.00%	8.70%	1.40%	0.00%	0.00%	0.00%	0.00%	0.00%	0.00%	97.90%	97.90%	0.00%	23	0	0%
Franklin County Rehab	64	48.24%	0.00%	11.54%	33.17%	0.00%	1.06%	0.00%	0.00%	0.00%	0.00%	94.00%	94.00%	0.00%	60	4	6%
Gifford	30	95.05%	0.00%	0.00%	0.00%	0.00%	0.00%	0.00%	0.00%	2.90%	0.00%	97.96%	97.96%	0.00%	29	1	3%
Gill Odd Fellows	46	59.82%	0.00%	8.70%	12.55%	0.00%	0.00%	0.00%	0.00%	3.37%	0.00%	84.43%	84.43%	0.00%	39	7	15%
Green Mountain	73	42.20%	0.00%	17.50%	12.51%	0.00%	0.00%	0.00%	0.00%	0.00%	0.00%	72.21%	72.21%	0.00%	53	20	27%
Greensboro	30	61.61%	0.00%	24.09%	8.49%	0.00%	0.00%	0.00%	0.00%	0.00%	0.00%	94.19%	94.19%	0.00%	28	2	7%
Helen Porter	105	54.84%	0.95%	11.15%	16.07%	0.00%	0.00%	0.00%	1.32%	3.20%	0.00%	87.53%	87.53%	0.00%	92	13	12%
Maple Lane	71	75.69%	0.00%	10.86%	8.22%	0.00%	0.00%	0.00%	0.00%	0.00%	0.00%	94.78%	94.78%	0.00%	67	4	6%
Mayo	50	42.71%	0.00%	32.39%	9.23%	0.00%	3.87%	0.00%	0.00%	0.00%	0.00%	88.19%	88.19%	0.00%	44	6	12%
McGirr	Closed	0.00%	0.00%	0.00%	0.00%	0.00%	0.00%	0.00%	0.00%	0.00%	0.00%	0.00%	0.00%	0.00%			
Morrisville Center	Closed	0.00%	0.00%	0.00%	0.00%	0.00%	0.00%	0.00%	0.00%	0.00%	0.00%	0.00%	0.00%	0.00%			
Mountain View	158	50.51%	0.00%	5.41%	19.97%	0.00%	0.94%	0.00%	0.00%	8.82%	0.00%	85.65%	85.65%	0.00%	135	23	15%
Mt. Ascutney	Closed	0.00%	0.00%	0.00%	0.00%	0.00%	0.00%	0.00%	0.00%	0.00%	0.00%	0.00%	0.00%	0.00%			
Newport	50	62.52%	0.00%	4.71%	5.61%	0.00%	0.00%	0.00%	0.00%	0.00%	0.00%	72.84%	72.84%	0.00%	36	14	28%
Pine Heights at Brattleboro	80	53.67%	0.00%	11.61%	20.48%	0.00%	0.00%	0.00%	3.79%	1.25%	0.00%	90.81%	90.81%	0.00%	73	7	9%
Pine Knoll	60	55.91%	0.00%	16.99%	7.37%	0.00%	0.00%	0.00%	0.00%	1.67%	0.00%	81.94%	81.94%	0.00%	49	11	18%
Pines at Rutland	125	59.43%	0.00%	6.35%	19.43%	0.00%	0.00%	2.22%	1.83%	1.65%	0.00%	90.92%	90.92%	0.00%	114	11	9%
Prospect	Closed	0.00%	0.00%	0.00%	0.00%	0.00%	0.00%	0.00%	0.00%	0.00%	0.00%	0.00%	0.00%	0.00%			
Redstone Villa	30	32.15%	0.00%	9.03%	17.85%	0.00%	3.12%	0.00%	0.00%	0.00%	0.00%	62.15%	62.15%	0.00%	19	11	37%
Rowan Court	96	55.01%	0.00%	6.25%	12.10%	0.00%	1.55%	0.00%	0.00%	0.00%	0.00%	74.90%	74.90%	0.00%	72	24	25%
Rutland Healthcare	103	68.56%	0.00%	2.47%	14.41%	0.00%	0.00%	0.00%	0.22%	6.98%	0.00%	92.64%	92.64%	0.00%	95	8	8%
Sager	Closed	0.00%	0.00%	0.00%	0.00%	0.00%	0.00%	0.00%	0.00%	0.00%	0.00%	0.00%	0.00%	0.00%			
Springfield	96	50.77%	0.00%	5.78%	19.39%	0.00%	0.00%	3.23%	0.37%	2.76%	0.00%	82.29%	82.29%	0.00%	79	17	18%
St. Albans Healthcare	93	68.02%	0.00%	3.68%	8.91%	0.00%	1.25%	1.87%	0.10%	0.17%	0.00%	84.01%	84.01%	0.00%	78	15	16%
St. Johnsbury	99	47.44%	0.00%	8.18%	17.43%	0.00%	2.93%	2.77%	0.00%	2.28%	0.29%	81.33%	81.33%	0.00%	81	18	18%
Starr Farm	150	49.76%	0.00%	9.59%	22.09%	0.00%	0.90%	2.11%	0.00%	2.95%	0.00%	87.40%	87.40%	0.00%	131	19	13%
Stratton House	Closed	0.00%	0.00%	0.00%	0.00%	0.00%	0.00%	0.00%	0.00%	0.00%	0.00%	0.00%	0.00%	0.00%			
The Manor	72	62.19%	0.00%	22.09%	10.53%	0.00%	0.00%	0.00%	0.00%	1.39%	0.00%	96.19%	96.19%	0.00%	69	3	4%
Thompson House	43	46.74%	0.00%	23.03%	18.08%	0.00%	0.00%	0.00%	0.00%	3.98%	0.00%	91.82%	91.82%	0.00%	39	4	9%
Union House	44	84.68%	0.00%	3.45%	4.25%	0.00%	0.00%	2.27%	0.00%	0.00%	0.00%	94.65%	94.65%	0.00%	42	2	5%
Vernon Green	60	42.10%	0.00%	27.26%	9.09%	0.00%	0.00%	0.00%	0.00%	0.00%	0.00%	78.44%	78.44%	0.00%	47	13	22%
Veterans Home	130	39.28%	7.69%	18.19%	3.20%	0.00%	0.00%	22.73%	0.00%	0.00%	0.00%	91.09%	91.09%	0.00%	118	12	9%
Woodridge	153	46.17%	0.00%	18.93%	19.14%	0.00%	0.00%	0.00%	1.14%	0.00%	0.00%	85.39%	85.39%	0.00%	131	22	14%
Totals	2,980	53.25%	0.70%	10.86%	14.96%	0.02%	0.86%	1.74%	0.37%	2.22%	0.01%	84.99%			2,531	449	15%

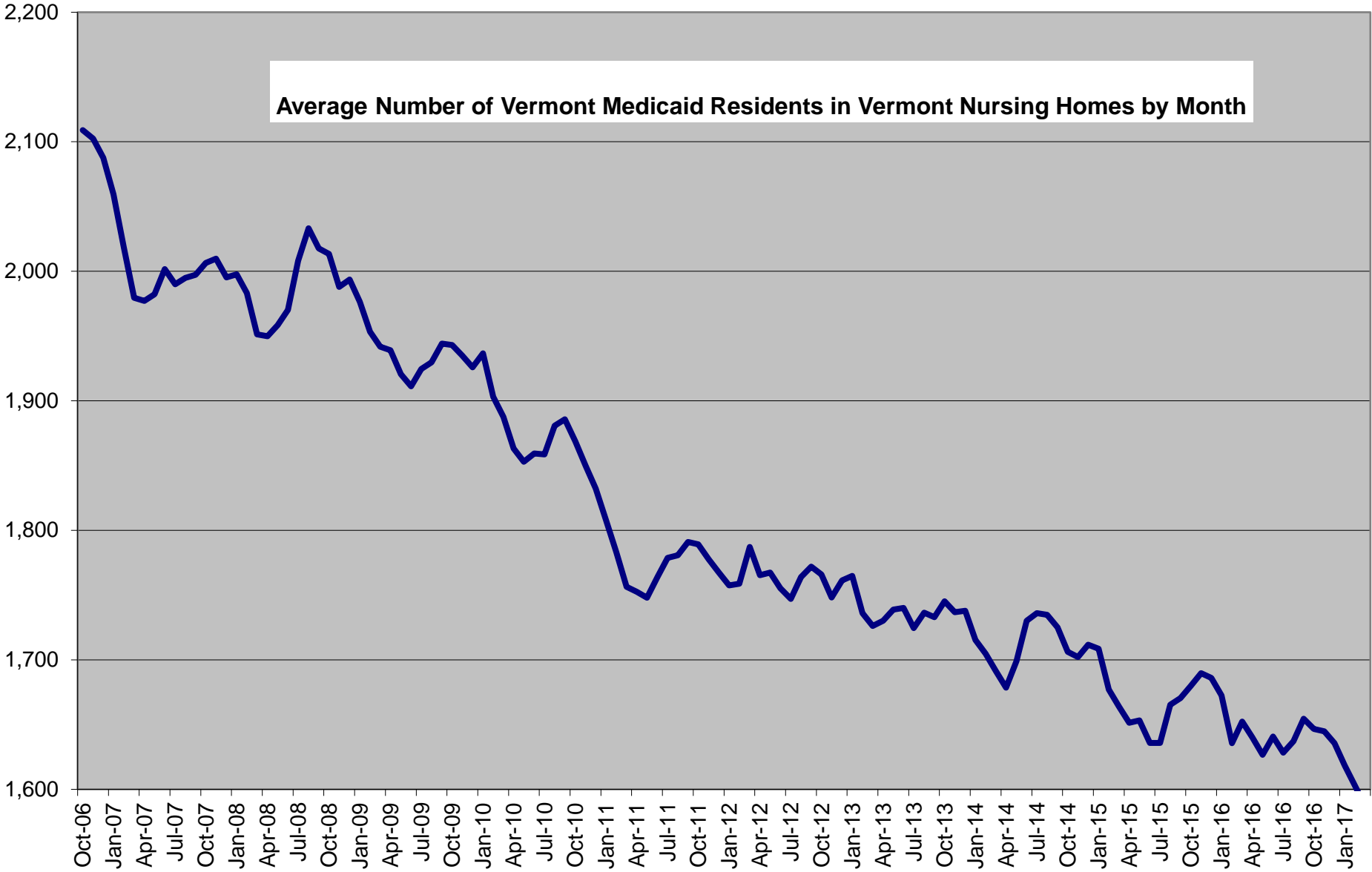
Ave. No. of Empty Beds This M



### Standardized Days from 10/1/06 to 3/31/17

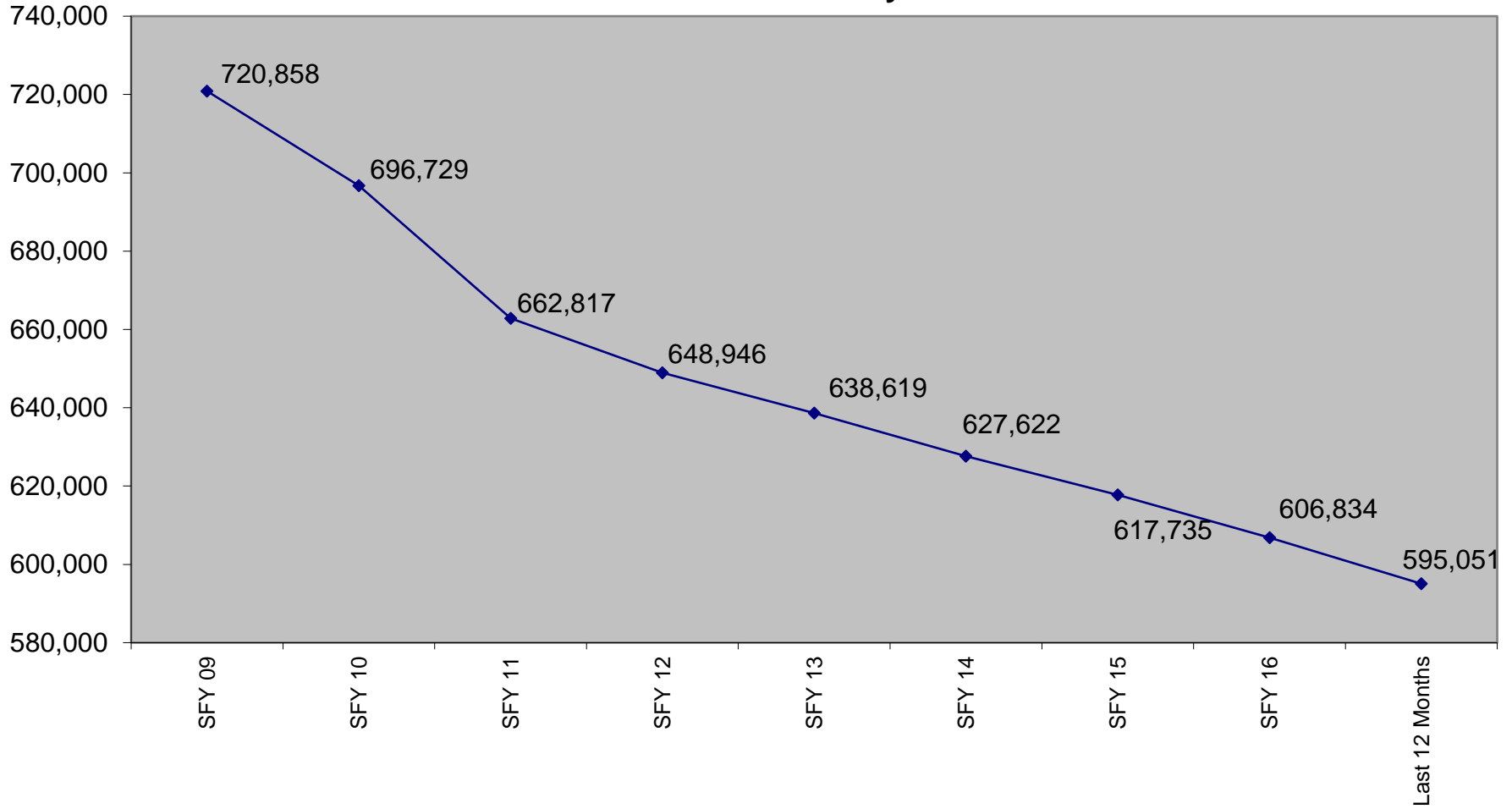


**Average Number of Vermont Medicaid Residents in Vermont Nursing Homes by Month**



**Month**

### Annual Medicaid Days



Annual Medicaid Days from SFY 2009 to Present



# Utilization Statistics- Payer source as a Percentage of Reported Days

Month: March 2017	HIGHLIGHTS	Over 70% Medicaid		Over 15% Private Medicare		Medicaid for Children and Adults (formerly Vt Health Access Managed Care)	Other managed Care	VA	Commercial Insurance	Hospice	Other	Total
		Reported Days	Vermont medicaid	Out of state medicaid	Self Pay							
Nursing Home												
Bel-Aire	1,154	53%	0%	29%	18%	0%	0%	0%	0%	0%	0%	100%
Bennington	2,384	63%	3%	9%	14%	0%	3%	2%	0%	6%	0%	100%
Berlin	3,003	70%	0%	5%	21%	0%	3%	0%	0%	1%	0%	100%
Birchwood Terrace	3,920	76%	0%	7%	12%	0%	0%	3%	0%	2%	0%	100%
Brookside-WRJ	1,497	59%	0%	25%	7%	0%	0%	3%	0%	6%	0%	100%
Burlington	3,475	44%	0%	6%	34%	0%	7%	0%	0%	10%	0%	100%
Cedar Hill	1,062	38%	0%	28%	25%	0%	3%	4%	1%	0%	0%	100%
Centers for Living & Rehab	2,912	51%	4%	15%	28%	1%	0%	0%	1%	0%	0%	100%
Crescent Manor	1,959	77%	6%	6%	8%	0%	0%	0%	0%	2%	0%	100%
Derby Green	698	90%	0%	9%	1%	0%	0%	0%	0%	0%	0%	100%
Franklin County Rehab	1,865	51%	0%	12%	35%	0%	1%	0%	0%	0%	0%	100%
Gifford	911	97%	0%	0%	0%	0%	0%	0%	0%	3%	0%	100%
Gill Odd Fellows	1,204	71%	0%	10%	15%	0%	0%	0%	0%	4%	0%	100%
Green Mountain	1,634	58%	0%	24%	17%	0%	0%	0%	0%	0%	0%	100%
Greensboro	876	65%	0%	26%	9%	0%	0%	0%	0%	0%	0%	100%
Helen Porter	2,849	63%	1%	13%	18%	0%	0%	0%	2%	4%	0%	100%
Maple Lane	2,086	80%	0%	11%	9%	0%	0%	0%	0%	0%	0%	100%
Mayo	1,367	48%	0%	37%	10%	0%	4%	0%	0%	0%	0%	100%
Mountain View	4,195	59%	0%	6%	23%	0%	1%	0%	0%	10%	0%	100%
Newport	1,129	86%	0%	6%	8%	0%	0%	0%	0%	0%	0%	100%
Pine Heights at Brattleboro	2,252	59%	0%	13%	23%	0%	0%	0%	4%	1%	0%	100%
Pine Knoll	1,524	68%	0%	21%	9%	0%	0%	0%	0%	2%	0%	100%
Pines at Rutland	3,523	65%	0%	7%	21%	0%	0%	2%	2%	2%	0%	100%
Redstone Villa	578	52%	0%	15%	29%	0%	5%	0%	0%	0%	0%	100%
Rowan Court	2,229	73%	0%	8%	16%	0%	2%	0%	0%	0%	0%	100%
Rutland Healthcare	2,958	74%	0%	3%	16%	0%	0%	0%	0%	8%	0%	100%
Springfield	2,449	62%	0%	7%	24%	0%	0%	4%	0%	3%	0%	100%
St. Albans Healthcare	2,422	81%	0%	4%	11%	0%	1%	2%	0%	0%	0%	100%
St. Johnsbury	2,496	58%	0%	10%	21%	0%	4%	3%	0%	3%	0%	100%
Starr Farm	4,064	57%	0%	11%	25%	0%	1%	2%	0%	3%	0%	100%
The Manor	2,147	65%	0%	23%	11%	0%	0%	0%	0%	1%	0%	100%
Thompson House	1,224	51%	0%	25%	20%	0%	0%	0%	0%	4%	0%	100%
Union House	1,291	89%	0%	4%	4%	0%	0%	2%	0%	0%	0%	100%
Vernon Green	1,459	54%	0%	35%	12%	0%	0%	0%	0%	0%	0%	100%
Veterans Home	3,671	43%	8%	20%	4%	0%	0%	25%	0%	0%	0%	100%
Woodridge	4,050	54%	0%	22%	22%	0%	0%	0%	1%	0%	0%	100%
Total	78,517	63%	1%	13%	18%	0.0%	1.0%	2.0%	0.4%	2.6%	0.0%	100%

Proofing

63% Medicaid  
18% Medicare  
13% Self Pay



# Utilization Statistics- Payor source as a Percentage of Reported Days

## Sorted by Percentage Self Pay Utilization

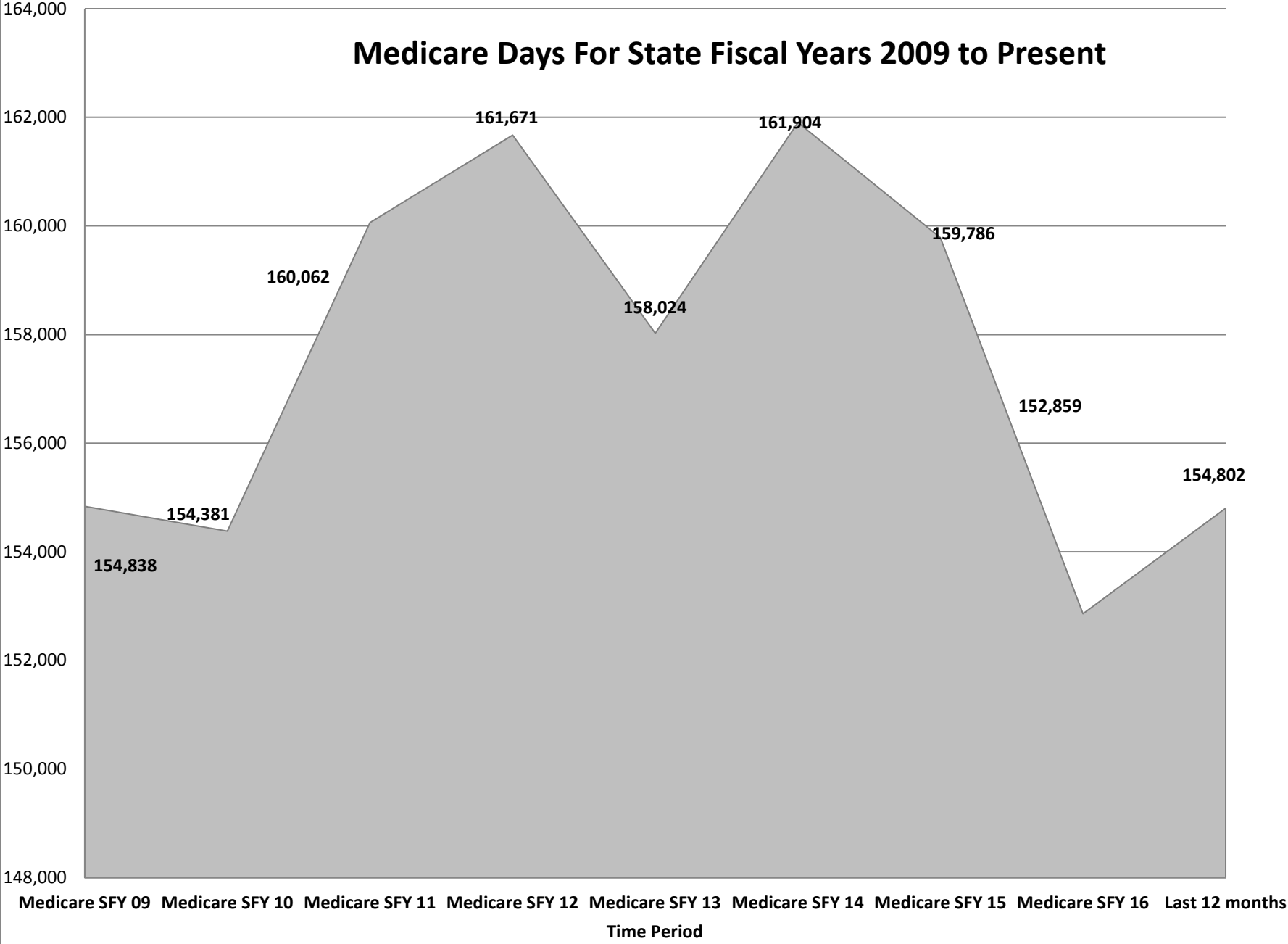
Nursing Home	Reported Days	Vermont Medicaid	Out of state Medicaid	Over 15% Self Pay	Medicare	Medicaid for Children and Adults (formerly Vt Health Access Managed Care)	Other managed Care	VA	Commercial Insurance	Hospice	Other	Total
				Self Pay								
Mayo	1,367	48%	0%	37%	10%	0%	4%	0%	0%	0%	0%	100%
Vernon Green	1,459	54%	0%	35%	12%	0%	0%	0%	0%	0%	0%	100%
Bel-Aire	1,154	53%	0%	29%	18%	0%	0%	0%	0%	0%	0%	100%
Cedar Hill	1,062	38%	0%	28%	25%	0%	3%	4%	1%	0%	0%	100%
Greensboro	876	65%	0%	26%	9%	0%	0%	0%	0%	0%	0%	100%
Thompson House	1,224	51%	0%	25%	20%	0%	0%	0%	0%	4%	0%	100%
Brookside-WRJ	1,497	59%	0%	25%	7%	0%	0%	3%	0%	6%	0%	100%
Green Mountain	1,634	58%	0%	24%	17%	0%	0%	0%	0%	0%	0%	100%
The Manor	2,147	65%	0%	23%	11%	0%	0%	0%	0%	1%	0%	100%
Woodridge	4,050	54%	0%	22%	22%	0%	0%	0%	1%	0%	0%	100%
Pine Knoll	1,524	68%	0%	21%	9%	0%	0%	0%	0%	2%	0%	100%
Veterans Home	3,671	43%	8%	20%	4%	0%	0%	25%	0%	0%	0%	100%
Centers for Living & Rehab	2,912	51%	4%	14.6%	28%	1%	0%	0%	1%	0%	0%	100%
Redstone Villa	578	52%	0%	14.5%	29%	0%	5%	0%	0%	0%	0%	100%
Pine Heights at Brattleboro	2,252	59%	0%	13%	23%	0%	0%	0%	4%	1%	0%	100%
Helen Porter	2,849	63%	1%	13%	18%	0%	0%	0%	2%	4%	0%	100%
Franklin County Rehab	1,865	51%	0%	12%	35%	0%	1%	0%	0%	0%	0%	100%
Maple Lane	2,086	80%	0%	11%	9%	0%	0%	0%	0%	0%	0%	100%
Starr Farm	4,064	57%	0%	11%	25%	0%	1%	2%	0%	3%	0%	100%
Gill Odd Fellows	1,204	71%	0%	10%	15%	0%	0%	0%	0%	4%	0%	100%
St. Johnsbury	2,496	58%	0%	10%	21%	0%	4%	3%	0%	3%	0%	100%
Bennington	2,384	63%	3%	9%	14%	0%	3%	2%	0%	6%	0%	100%
Derby Green	698	90%	0%	9%	1%	0%	0%	0%	0%	0%	0%	100%
Rowan Court	2,229	73%	0%	8%	16%	0%	2%	0%	0%	0%	0%	100%
Springfield	2,449	62%	0%	7%	24%	0%	0%	4%	0%	3%	0%	100%
Birchwood Terrace	3,920	76%	0%	7%	12%	0%	0%	3%	0%	2%	0%	100%
Pines at Rutland	3,523	65%	0%	7%	21%	0%	0%	2%	2%	2%	0%	100%
Newport	1,129	86%	0%	6%	8%	0%	0%	0%	0%	0%	0%	100%
Crescent Manor	1,959	77%	6%	6%	8%	0%	0%	0%	0%	2%	0%	100%
Mountain View	4,195	59%	0%	6%	23%	0%	1%	0%	0%	10%	0%	100%
Burlington	3,475	44%	0%	6%	34%	0%	7%	0%	0%	10%	0%	100%
Berlin	3,003	70%	0%	5%	21%	0%	3%	0%	0%	1%	0%	100%
St. Albans Healthcare	2,422	81%	0%	4%	11%	0%	1%	2%	0%	0%	0%	100%
Union House	1,291	89%	0%	4%	4%	0%	0%	2%	0%	0%	0%	100%
Rutland Healthcare	2,958	74%	0%	3%	16%	0%	0%	0%	0%	8%	0%	100%
Gifford	911	97%	0%	0%	0%	0%	0%	0%	0%	3%	0%	100%
Total	78,517	63%	1%	13%	18%	0%	1%	2%	0%	3%	0%	100%

# Utilization Statistics- Payor source as a Percentage of Reported Days

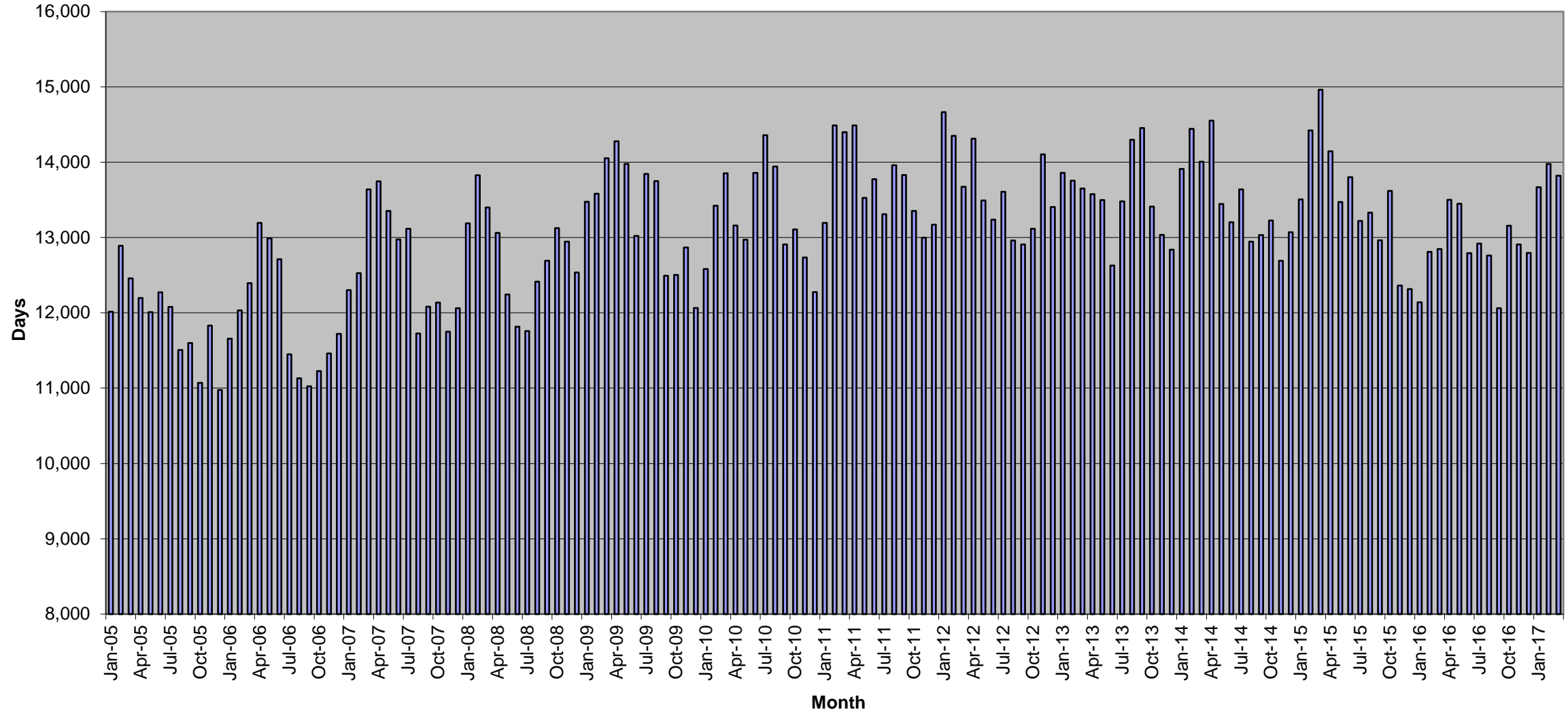
## Sorted by Percentage Medicare Utilization

Nursing Home	Reported Days	HIGHLIGHTS										Total
		Vermont Medicaid	Out of state Medicaid	Self Pay	Medicare	Over 15% Medicare	Medicaid for Children and Adults (formerly Vt Health Access Managed Care)	Other managed Care	VA	Commercial Insurance	Hospice	
Franklin County Rehab	1,865	51%	0%	12%	35%	0%	1%	0%	0%	0%	0%	100%
Burlington	3,475	44%	0%	6%	34%	0%	7%	0%	0%	10%	0%	100%
Redstone Villa	578	52%	0%	15%	29%	0%	5%	0%	0%	0%	0%	100%
Centers for Living & Rehab	2,912	51%	4%	15%	28%	1%	0%	0%	1%	0%	0%	100%
Starr Farm	4,064	57%	0%	11%	25%	0%	1%	2%	0%	3%	0%	100%
Cedar Hill	1,062	38%	0%	28%	25%	0%	3%	4%	1%	0%	0%	100%
Springfield	2,449	62%	0%	7%	24%	0%	0%	4%	0%	3%	0%	100%
Mountain View	4,195	59%	0%	6%	23%	0%	1%	0%	0%	10%	0%	100%
Pine Heights at Brattleboro	2,252	59%	0%	13%	23%	0%	0%	0%	4%	1%	0%	100%
Woodridge	4,050	54%	0%	22%	22%	0%	0%	0%	1%	0%	0%	100%
St. Johnsbury	2,496	58%	0%	10%	21%	0%	4%	3%	0%	3%	0%	100%
Pines at Rutland	3,523	65%	0%	7%	21%	0%	0%	2%	2%	2%	0%	100%
Berlin	3,003	70%	0%	5%	21%	0%	3%	0%	0%	1%	0%	100%
Thompson House	1,224	51%	0%	25%	20%	0%	0%	0%	0%	4%	0%	100%
Helen Porter	2,849	63%	1%	13%	18%	0%	0%	0%	2%	4%	0%	100%
Bel-Aire	1,154	53%	0%	29%	18%	0%	0%	0%	0%	0%	0%	100%
Green Mountain	1,634	58%	0%	24%	17%	0%	0%	0%	0%	0%	0%	100%
Rowan Court	2,229	73%	0%	8%	16%	0%	2%	0%	0%	0%	0%	100%
Rutland Healthcare	2,958	74%	0%	3%	16%	0%	0%	0%	0%	8%	0%	100%
Gill Odd Fellows	1,204	71%	0%	10%	14.9%	0%	0%	0%	0%	4%	0%	100%
Bennington	2,384	63%	3%	9%	14%	0%	3%	2%	0%	6%	0%	100%
Birchwood Terrace	3,920	76%	0%	7%	12%	0%	0%	3%	0%	2%	0%	100%
Vernon Green	1,459	54%	0%	35%	12%	0%	0%	0%	0%	0%	0%	100%
The Manor	2,147	65%	0%	23%	11%	0%	0%	0%	0%	1%	0%	100%
St. Albans Healthcare	2,422	81%	0%	4%	11%	0%	1%	2%	0%	0%	0%	100%
Mayo	1,367	48%	0%	37%	10%	0%	4%	0%	0%	0%	0%	100%
Greensboro	876	65%	0%	26%	9%	0%	0%	0%	0%	0%	0%	100%
Pine Knoll	1,524	68%	0%	21%	9%	0%	0%	0%	0%	2%	0%	100%
Maple Lane	2,086	80%	0%	11%	9%	0%	0%	0%	0%	0%	0%	100%
Newport	1,129	86%	0%	6%	8%	0%	0%	0%	0%	0%	0%	100%
Crescent Manor	1,959	77%	6%	6%	8%	0%	0%	0%	0%	2%	0%	100%
Brookside-WRJ	1,497	59%	0%	25%	7%	0%	0%	3%	0%	6%	0%	100%
Union House	1,291	89%	0%	4%	4%	0%	0%	2%	0%	0%	0%	100%
Veterans Home	3,671	43%	8%	20%	4%	0%	0%	25%	0%	0%	0%	100%
Derby Green	698	90%	0%	9%	1%	0%	0%	0%	0%	0%	0%	100%
Gifford	911	97%	0%	0%	0%	0%	0%	0%	0%	3%	0%	100%
Total	78,517	63%	1%	13%	18%	0%	1%	2%	0%	3%	0%	100%

# Medicare Days For State Fiscal Years 2009 to Present



**Standardized Medicare Part A Monthly Days (Standardized for 31 day month)**  
**Seasonal Cycles in Medicare Days**





Nursing Facility Licensed Beds

**CURRENT NUMBER OF LICENSED BEDS**

Per notice from Licensing and Protection

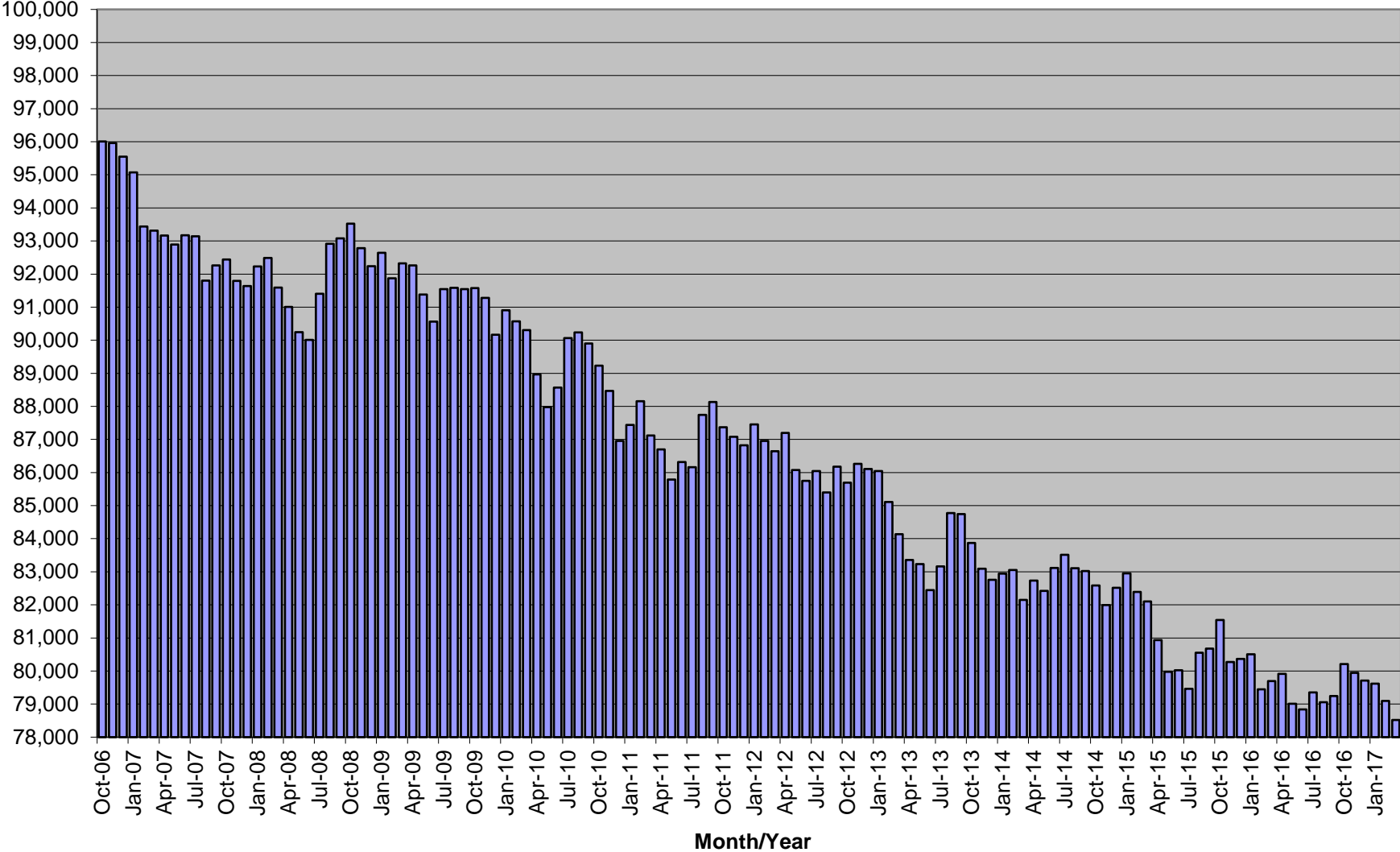
	7/1/2009	4/1/2010	12/1/2010	4/1/2011	8/25/2011	1/19/2012	5/1/2012	7/1/2012	9/1/2013	10/1/2014	4/1/2015
Bel-Aire	44	44	44	44	44	44	44	44	44	44	44
Bennington	100	100	100	100	100	100	100	100	100	100	100
Berlin	141	141	141	141	141	141	141	141	141	141	141
Birchwood Terrace	160	150	150	144	144	144	144	144	144	144	144
Brookside-Bradford	0	0	0	0	0	0	0	0	0	0	0
Brookside-WRJ	67	67	67	67	67	67	67	67	67	67	67
Burlington	126	126	126	126	126	126	126	126	126	126	126
Cedar Hill	39	39	39	39	39	39	39	39	39	39	39
Centers for Living & Rehab	150	150	150	150	150	150	150	150	150	130	130
Clark	0	0	0	0	0	0	0	0	0	0	0
Crescent Manor	90	90	90	90	90	90	90	90	90	90	90
Derby Green	23	23	23	23	23	23	23	23	23	23	23
Franklin County Rehab	64	64	64	64	64	64	64	64	64	64	64
Gifford	30	30	30	30	30	30	30	30	30	30	30
Gill Odd Fellows	56	56	46	46	46	46	46	46	46	46	46
Green Mountain	73	73	73	73	73	73	73	73	73	73	73
Greensboro	30	30	30	30	30	30	30	30	30	30	30
Helen Porter	105	105	105	105	105	105	105	105	105	105	105
Linden Lodge	0	0	0	0	0	0	0	0	0	0	0
Maple Lane	71	71	71	71	71	71	71	71	71	71	71
Mayo	50	50	50	50	50	50	50	50	50	50	50
McGirr	30	30	30	30	30	30	0	0	0	0	0
Morrisville Center	0	0	0	0	0	0	0	0	0	0	0
Mountain View	158	158	158	158	158	158	158	158	158	158	158
Mt. Ascutney	25	25	25	25	25	25	25	25	0	0	0
Newport	50	50	50	50	50	50	50	50	50	50	50
Pine Heights at Brattleboro	80	80	80	80	80	80	80	80	80	80	80
Pine Knoll	60	60	60	60	60	60	60	60	60	60	60
Pines at Rutland	125	125	125	125	125	125	125	125	125	125	125
Prospect	21	21	21	21	21	0	0	0	0	0	0
Redstone Villa	30	30	30	30	30	30	30	30	30	30	30
Rowan Court	96	96	96	96	96	96	96	96	96	96	96
Rutland Healthcare	127	123	123	123	123	123	123	123	123	123	123
Sager	0	0	0	0	0	0	0	0	0	0	0
Springfield	102	102	102	102	102	102	102	102	102	102	102
St. Albans Healthcare	120	115	115	115	115	115	115	115	115	115	115
St. Johnsbury	110	110	110	110	110	110	110	110	110	110	110
Starr Farm	150	150	150	150	150	150	150	150	150	150	150
Stratton House	0	0	0	0	0	0	0	0	0	0	0
The Manor	72	72	72	72	72	72	72	72	72	72	72
Thompson House	43	43	43	43	43	43	43	43	43	43	43
Union House	44	44	44	44	44	44	44	44	44	44	44
Vernon Green	60	60	60	60	60	60	60	60	60	60	60
Veterans Home	177	177	177	177	177	177	177	171	171	171	130
Woodridge	153	153	153	153	153	153	153	153	153	153	153
<b>Total</b>	<b>3,252</b>	<b>3,233</b>	<b>3,223</b>	<b>3,217</b>	<b>3,217</b>	<b>3,196</b>	<b>3,166</b>	<b>3,160</b>	<b>3,135</b>	<b>3,115</b>	<b>3,074</b>
<b>Plus facilities not participating in Medicaid</b>											
Arbors	12	12	12	12	12	12	12	12	12	12	12
Mertens	14	14	14	14	14	14	14	14	14	14	14
Wake Robin	48	48	48	48	51	51	51	51	51	51	51
<b>Grand Total</b>	<b>3,326</b>	<b>3,307</b>	<b>3,297</b>	<b>3,291</b>	<b>3,294</b>	<b>3,273</b>	<b>3,243</b>	<b>3,237</b>	<b>3,212</b>	<b>3,192</b>	<b>3,151</b>

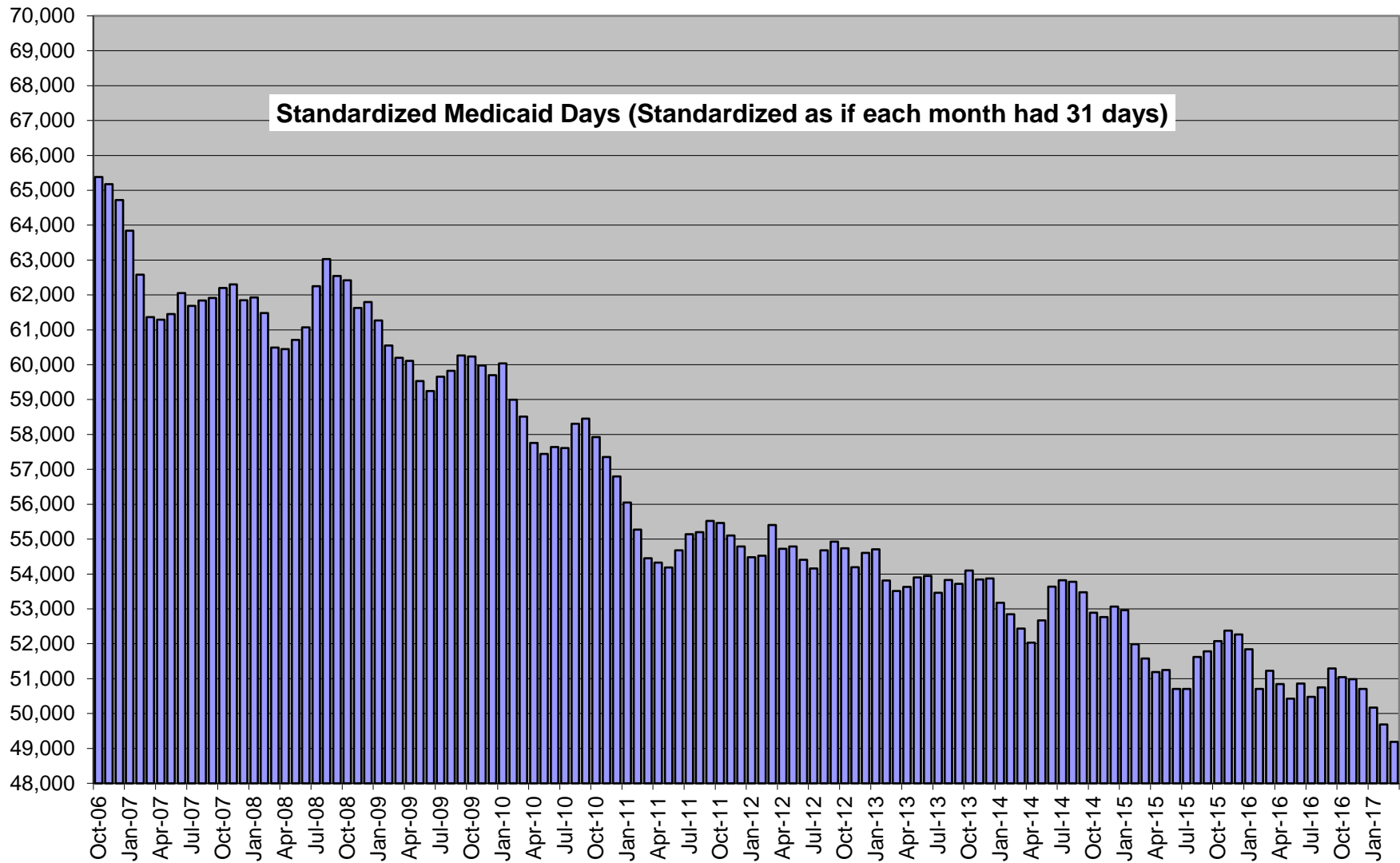
New columns are added only

**MEDICAID PARTICIPATING FACILITIES ONLY**

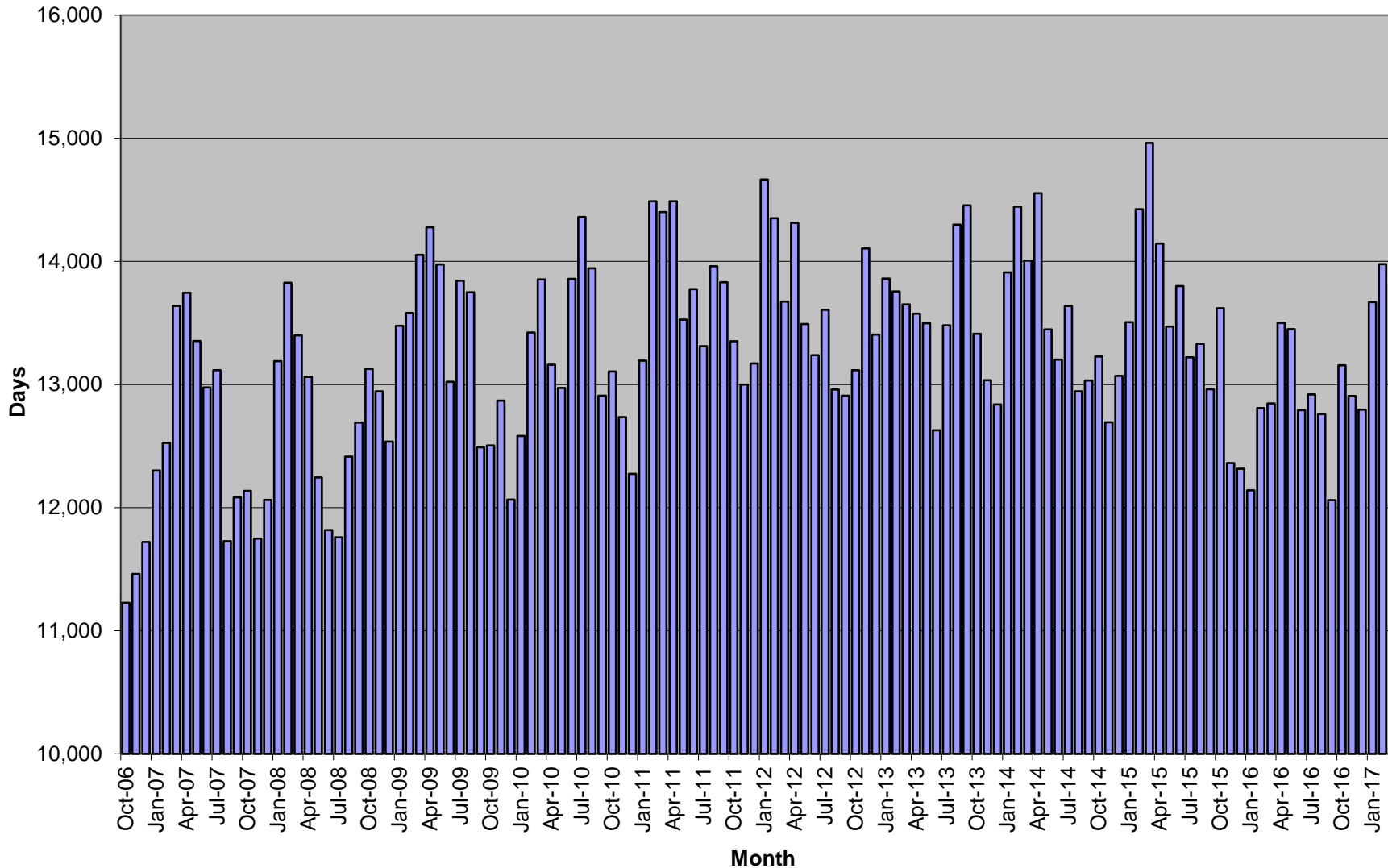
<u>Alphabetical List of Nursing Facilities</u>		Number of Beds January 1, 2017	<u>County</u>	<u>Nursing Facilities Sorted by County</u>	<u>Number of Beds in NFs Participating in Medicaid</u>		
Orleans	Bel-Aire	44	Addison	Helen Porter	105	Addison	105
Bennington	Bennington	91	Bennington	Bennington	91	Bennington	441
Washington	Berlin	115	Bennington	Centers for Living & Rehab	130	Caledonia	159
Chittenden	Birchwood Terrace	144	Bennington	Crescent Manor	90	Chittenden	493
Windsor	Brookside-WRJ	67	Bennington	Prospect	0	Franklin	187
Chittenden	Burlington	126	Bennington	Veterans Home	130	Lamoille	72
Windsor	Cedar Hill	39	Caledonia	Pine Knoll	60	Orange	30
Bennington	Centers for Living & Rehab	130	Caledonia	St. Johnsbury	99	Orleans	262
Lamoille	The Manor	72	Chittenden	Birchwood Terrace	144	Rutland	386
Bennington	Crescent Manor	90	Chittenden	Burlington	126	Washington	414
Orleans	Derby Green	23	Chittenden	Green Mountain	73	Windham	183
Windham	Pine Heights at Brattleboro	80	Chittenden	Starr Farm	150	Windsor	248
Rutland	Pines at Rutland	125	Franklin	Franklin County Rehab	64		
Franklin	Franklin County Rehab	64	Franklin	St. Albans Healthcare	93	Total	<u>2,980</u>
Orange	Gifford	30	Franklin	Redstone Villa	30		
Windsor	Gill Odd Fellows	46	Lamoille	The Manor	72		
Chittenden	Green Mountain	73	Orange	Gifford	30		
Orleans	Greensboro	30	Orleans	Bel-Aire	44		
Rutland	Rutland Healthcare	103	Orleans	Derby Green	23		
Franklin	St. Albans Healthcare	93	Orleans	Greensboro	30		
Addison	Helen Porter	105	Orleans	Maple Lane	71		
Orleans	Maple Lane	71	Orleans	Newport	50		
Washington	Mayo	50	Orleans	Union House	44		
Windham	McGirr	0	Rutland	Pines at Rutland	125		
Rutland	Mountain View	158	Rutland	Rutland Healthcare	103		
Windsor	Mt. Ascutney	0	Rutland	Mountain View	158		
Orleans	Newport	50	Washington	Berlin	115		
Caledonia	Pine Knoll	60	Washington	Mayo	50		
Bennington	Prospect	0	Washington	Rowan Court	96		
Franklin	Redstone Villa	30	Washington	Woodridge	153		
Washington	Rowan Court	96	Windham	Pine Heights at Brattleboro	80		
Windsor	Springfield	96	Windham	McGirr	0		
Caledonia	St. Johnsbury	99	Windham	Thompson House	43		
Chittenden	Starr Farm	150	Windham	Vernon Green	60		
Windham	Thompson House	43	Windsor	Brookside-WRJ	67		
Orleans	Union House	44	Windsor	Cedar Hill	39		
Windham	Vernon Green	60	Windsor	Gill Odd Fellows	46		
Bennington	Veterans Home	130	Windsor	Mt. Ascutney	0		
Washington	Woodridge	153	Windsor	Springfield	96		
	Total	<u>2,980</u>			<u>2,980</u>		

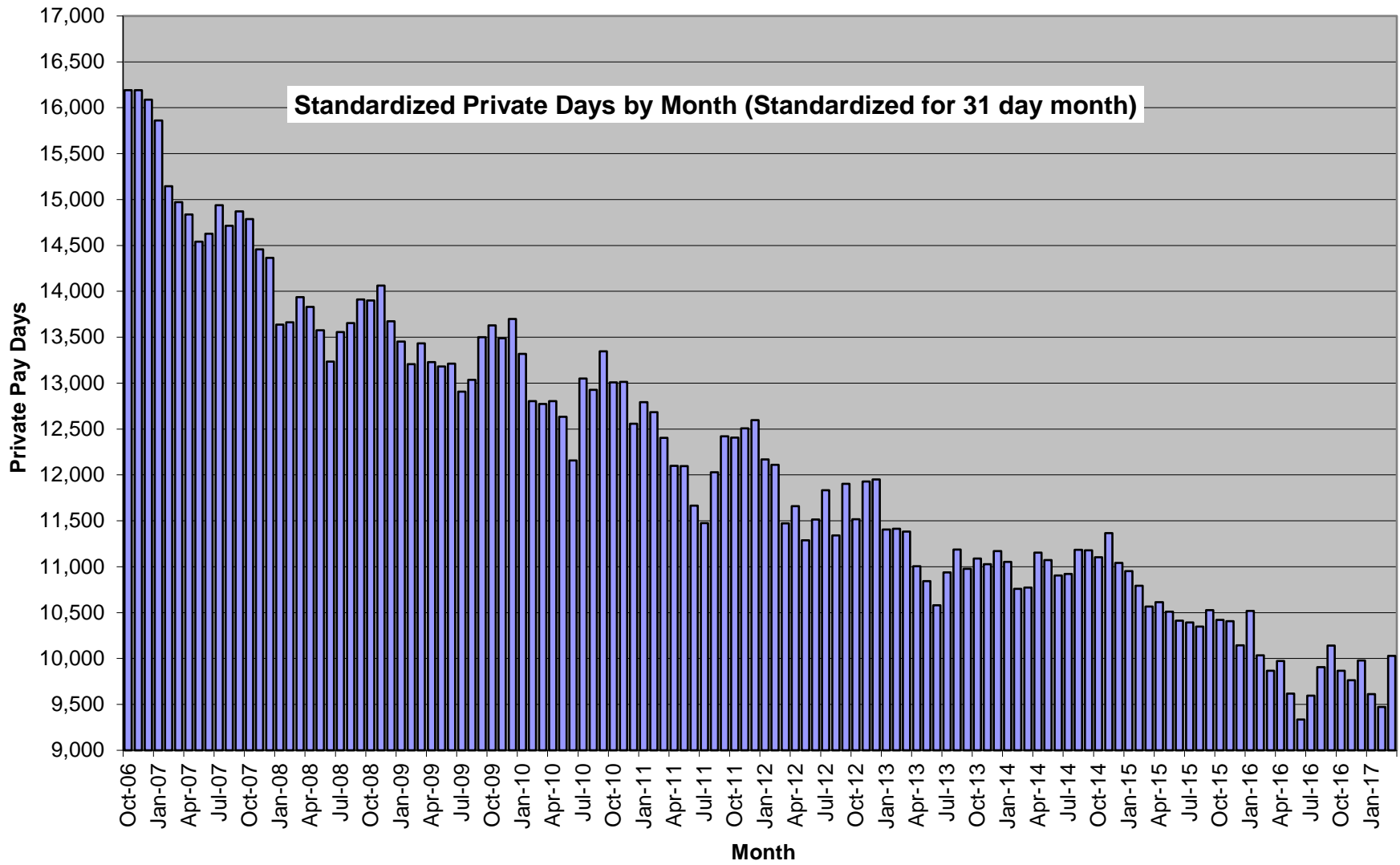
**Total Nursing Facility Resident Days (Standardized for 31 days in each month)**





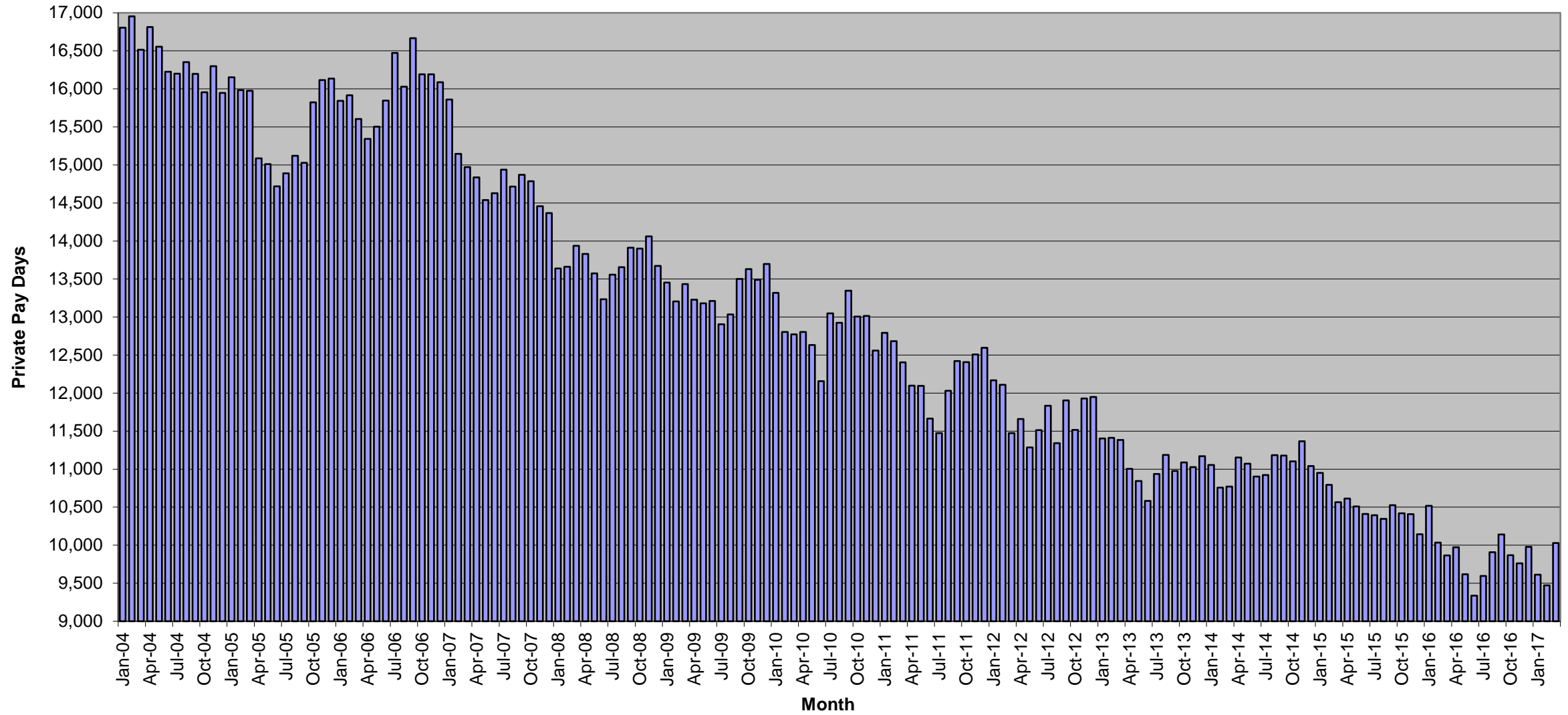
Standardized Medicare Part A Monthly Days (Standardized for 31 day month)







Standardized Private Days by Month Back to January 2004 (Standardized for 31 day month)



A	
1	<b>Total Resident Days</b>
2	Division of Rate Setting Schedule of Rep
3	
4	
5	Nursing Home
6	
7	Bel-Aire
8	Bennington
9	Berlin
10	Birchwood Terrace
11	Brookside-Bradford
12	Brookside-WRJ
13	Burlington
14	Cedar Hill
15	Centers for Living & Rehab
16	Clark
17	Crescent Manor
18	Derby Green
19	Franklin County Rehab
20	Gifford
21	Gill Odd Fellows
22	Green Mountain
23	Greensboro
24	Helen Porter
25	Linden Lodge
26	Maple Lane
27	Mayo
28	McGirr
29	Morrisville Center
30	Mountain View
31	Mt. Ascutney
32	Newport
33	Pine Heights at Brattleboro
34	Pine Knoll
35	Pines at Rutland
36	Prospect
37	Redstone Villa
38	Rowan Court
39	Rutland Healthcare
40	Sager
41	Springfield
42	St. Albans Healthcare
43	St. Johnsbury
44	Star Farm
45	Stratton House
46	The Manor

\\F:\DAIL\_Websites\DAL\BResources\Documents&Reports\Nursing Home Census YTD Utilization from  
 Rate Setting March 2017 census.xlsx20-Totaldays by month

	A
1	<b>Total Resident Days</b>
2	Division of Rate Setting Schedule of Rep
3	
4	
5	Nursing Home
47	Thompson House
48	Union House
49	Vernon Green
50	Veterans Home
51	Woodridge
52	
53	Totals

	720,858	696,729	662,817	648,946	638,619	627,622
--	---------	---------	---------	---------	---------	---------

Decrease in Days from prior year            -5,172            -24,129            -33,912            -13,871            -10,327            -10,997

**Decrease in Ave. Residents from prior year            -14            -66            -93            -38            -28            -30**

Decrease in Ave # of residents since SFY 05            -185            -251            -344            -382            -410            -440

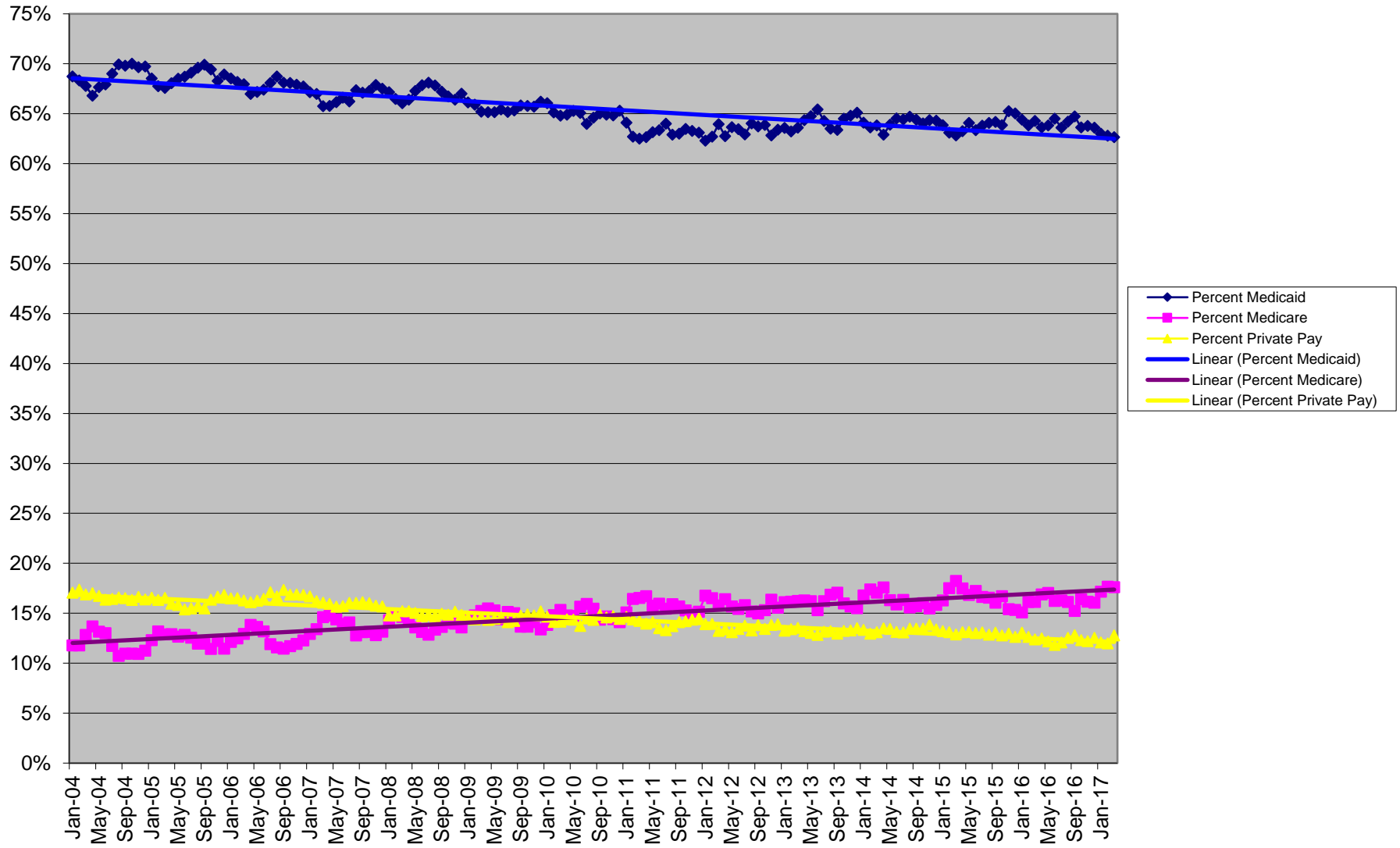
**Percent of OOS days to total days**    5.52%

Over the Last 12 months

Totals		154,838	154,381	160,062	161,671	158,024	161,904
Increase in Days from prior year		6,886	-457	5,681	1,609	-3,647	3,880
Increase in Ave. Residents from prior year		19	(1)	16	4	(10)	11
Cumulative Increase in Ave # of residents since SFY 05		50.6	49.4	64.9	69.3	59.3	70.0



### History of the Percent of Resident Days by Payor Group



	Jan-04	Feb-04	Mar-04	Apr-04	May-04	Jun-04	Jul-04	Aug-04
Medicare Days	11,604	10,758	12,567	13,092	13,026	12,481	11,575	10,571
Medicaid Days	67,696	62,407	66,343	63,874	66,926	65,178	68,043	68,943
Private Days	16,806	15,859	16,515	16,272	16,554	15,702	16,199	16,352
Total Days	98,491	91,343	97,890	95,611	98,933	95,943	98,602	98,592

	<u>Jan-04</u>	<u>Feb-04</u>	<u>Mar-04</u>	<u>Apr-04</u>	<u>May-04</u>	<u>Jun-04</u>	<u>Jul-04</u>	<u>Aug-04</u>
Percent Medicaid	69%	68%	68%	67%	68%	68%	69%	70%
Percent Medicare	12%	12%	13%	14%	13%	13%	12%	11%
Percent Private Pay	17%	17%	17%	17%	17%	16%	16%	17%



Sep-04	Oct-04	Nov-04	Dec-04	Jan-05	Feb-05	Mar-05	Apr-05	May-05	Jun-05
10,393	10,717	10,361	10,939	12,016	11,644	12,457	11,804	12,010	11,876
66,245	68,409	66,037	67,841	66,869	59,898	65,318	62,281	64,987	63,578
15,675	15,955	15,772	15,947	16,152	14,436	15,975	14,600	15,010	14,243
94,886	97,730	94,814	97,273	97,563	88,385	96,662	91,519	94,847	92,536

<u>Sep-04</u>	<u>Oct-04</u>	<u>Nov-04</u>	<u>Dec-04</u>	<u>Jan-05</u>	<u>Feb-05</u>	<u>Mar-05</u>	<u>Apr-05</u>	<u>May-05</u>	<u>Jun-05</u>
70%	70%	70%	70%	69%	68%	68%	68%	69%	69%
11%	11%	11%	11%	12%	13%	13%	13%	13%	13%
17%	16%	17%	16%	17%	16%	17%	16%	16%	15%

Jul-05	Aug-05	Sep-05	Oct-05	Nov-05	Dec-05	Jan-06	Feb-06	Mar-06	Apr-06
12,078	11,508	11,224	11,070	11,448	10,976	11,656	10,868	12,395	12,770
66,482	67,053	65,678	67,205	63,911	66,048	65,884	59,416	65,138	61,801
14,890	15,122	14,543	15,824	15,595	16,135	15,844	14,377	15,605	14,849
96,212	96,316	93,944	96,789	93,582	95,822	96,139	87,130	95,836	92,257

<u>Jul-05</u>	<u>Aug-05</u>	<u>Sep-05</u>	<u>Oct-05</u>	<u>Nov-05</u>	<u>Dec-05</u>	<u>Jan-06</u>	<u>Feb-06</u>	<u>Mar-06</u>	<u>Apr-06</u>
69%	70%	70%	69%	68%	69%	69%	68%	68%	67%
13%	12%	12%	11%	12%	11%	12%	12%	13%	14%
15%	16%	15%	16%	17%	17%	16%	17%	16%	16%







<b>Nov-08</b>	<b>Dec-08</b>	<b>Jan-09</b>	<b>Feb-09</b>	<b>Mar-09</b>	<b>Apr-09</b>	<b>May-09</b>	<b>Jun-09</b>	<b>Jul-09</b>	<b>Aug-09</b>
12,528	12,537	13,476	12,268	14,052	13,817	13,976	12,602	13,844	13,749
59,639	61,800	61,267	54,692	60,196	58,168	59,534	57,337	59,659	59,822
13,608	13,674	13,452	11,929	13,434	12,803	13,181	12,786	12,906	13,035
89,793	92,241	92,641	82,979	92,327	89,282	91,380	87,641	91,544	91,583

<b><u>Nov-08</u></b>	<b><u>Dec-08</u></b>	<b><u>Jan-09</u></b>	<b><u>Feb-09</u></b>	<b><u>Mar-09</u></b>	<b><u>Apr-09</u></b>	<b><u>May-09</u></b>	<b><u>Jun-09</u></b>	<b><u>Jul-09</u></b>	<b><u>Aug-09</u></b>
66%	67%	66%	66%	65%	65%	65%	65%	65%	65%
14%	14%	15%	15%	15%	15%	15%	14%	15%	15%
15%	15%	15%	14%	15%	14%	14%	15%	14%	14%

<b>Sep-09</b>	<b>Oct-09</b>	<b>Nov-09</b>	<b>Dec-09</b>	<b>Jan-10</b>	<b>Feb-10</b>	<b>Mar-10</b>	<b>Apr-10</b>	<b>May-10</b>	<b>Jun-10</b>
12,088	12,505	12,454	12,065	12,583	12,123	13,853	12,735	12,971	13,411
58,322	60,235	58,042	59,698	60,036	53,286	58,516	55,894	57,439	55,780
13,066	13,630	13,055	13,698	13,319	11,566	12,773	12,391	12,633	11,766
88,590	91,573	88,338	90,163	90,902	81,807	90,306	86,099	87,980	85,713

<b><u>Sep-09</u></b>	<b><u>Oct-09</u></b>	<b><u>Nov-09</u></b>	<b><u>Dec-09</u></b>	<b><u>Jan-10</u></b>	<b><u>Feb-10</u></b>	<b><u>Mar-10</u></b>	<b><u>Apr-10</u></b>	<b><u>May-10</u></b>	<b><u>Jun-10</u></b>
66%	66%	66%	66%	66%	65%	65%	65%	65%	65%
14%	14%	14%	13%	14%	15%	15%	15%	15%	16%
15%	15%	15%	15%	15%	14%	14%	14%	14%	14%



<b>Jul-10</b>	<b>Aug-10</b>	<b>Sep-10</b>	<b>Oct-10</b>	<b>Nov-10</b>	<b>Dec-10</b>	<b>Jan-11</b>	<b>Feb-11</b>	<b>Mar-11</b>	<b>Apr-11</b>
14,360	13,944	12,492	13,107	12,325	12,275	13,193	13,086	14,400	14,022
57,614	58,304	56,570	57,929	55,502	56,800	56,048	49,923	54,450	52,573
13,049	12,926	12,917	13,007	12,595	12,559	12,793	11,455	12,405	11,708
90,063	90,234	87,004	89,234	85,615	86,959	87,441	79,627	87,117	83,905

<b><u>Jul-10</u></b>	<b><u>Aug-10</u></b>	<b><u>Sep-10</u></b>	<b><u>Oct-10</u></b>	<b><u>Nov-10</u></b>	<b><u>Dec-10</u></b>	<b><u>Jan-11</u></b>	<b><u>Feb-11</u></b>	<b><u>Mar-11</u></b>	<b><u>Apr-11</u></b>
64%	65%	65%	65%	65%	65%	64%	63%	62.5%	62.7%
16%	15%	14%	15%	14%	14%	15%	16%	17%	17%
14%	14%	15%	15%	15%	14%	15%	14%	14%	14%

<b>May-11</b>	<b>Jun-11</b>	<b>Jul-11</b>	<b>Aug-11</b>	<b>Sep-11</b>	<b>Oct-11</b>	<b>Nov-11</b>	<b>Dec-11</b>	<b>Jan-12</b>	<b>Feb-12</b>
13,527	13,331	13,311	13,960	13,385	13,352	12,579	13,170	14,664	13,425
54,186	52,918	55,141	55,202	53,729	55,465	53,330	54,787	54,480	51,004
12,095	11,288	11,474	12,030	12,021	12,407	12,104	12,596	12,169	11,328
85,784	83,534	86,158	87,745	85,291	87,370	84,273	86,821	87,455	81,346

<b><u>May-11</u></b>	<b><u>Jun-11</u></b>	<b><u>Jul-11</u></b>	<b><u>Aug-11</u></b>	<b><u>Sep-11</u></b>	<b><u>Oct-11</u></b>	<b><u>Nov-11</u></b>	<b><u>Dec-11</u></b>	<b><u>Jan-12</u></b>	<b><u>Feb-12</u></b>
63.2%	63.3%	64.0%	62.9%	63.0%	63.5%	63.3%	63.1%	62.3%	62.7%
16%	16%	15%	16%	16%	15%	15%	15%	17%	17%
14%	14%	13%	14%	14%	14%	14%	15%	14%	14%

<b>Mar-12</b>	<b>Apr-12</b>	<b>May-12</b>	<b>Jun-12</b>	<b>Jul-12</b>	<b>Aug-12</b>	<b>Sep-12</b>	<b>Oct-12</b>	<b>Nov-12</b>	<b>Dec-12</b>
13,673	13,851	13,491	12,810	13,607	12,959	12,493	13,117	13,650	13,405
55,404	52,958	54,790	52,656	54,155	54,681	53,159	54,740	52,445	54,603
11,473	11,284	11,287	11,142	11,834	11,341	11,520	11,516	11,544	11,950
86,641	84,386	86,079	82,979	86,047	85,400	83,396	85,694	83,478	86,108

<b><u>Mar-12</u></b>	<b><u>Apr-12</u></b>	<b><u>May-12</u></b>	<b><u>Jun-12</u></b>	<b><u>Jul-12</u></b>	<b><u>Aug-12</u></b>	<b><u>Sep-12</u></b>	<b><u>Oct-12</u></b>	<b><u>Nov-12</u></b>	<b><u>Dec-12</u></b>
64%	63%	64%	63%	63%	64%	64%	64%	63%	63%
16%	16%	16%	15%	16%	15%	15%	15%	16%	16%
13%	13%	13%	13%	14%	13%	14%	13%	14%	14%











<b>Apr-16</b>	<b>May-16</b>	<b>Jun-16</b>	<b>Jul-16</b>	<b>Aug-16</b>	<b>Sep-16</b>	<b>Oct-16</b>	<b>Nov-16</b>	<b>Dec-16</b>	<b>Jan-17</b>
13,065	13,449	12,380	12,920	12,760	11,672	13,157	12,491	12,795	13,669
49,203	50,429	49,221	50,478	50,752	49,636	51,045	49,343	50,705	50,170
9,652	9,617	9,035	9,596	9,907	9,813	9,868	9,448	9,979	9,613
77,335	79,013	76,297	79,354	79,054	76,685	80,212	77,367	79,708	79,614

<b><u>Apr-16</u></b>	<b><u>May-16</u></b>	<b><u>Jun-16</u></b>	<b><u>Jul-16</u></b>	<b><u>Aug-16</u></b>	<b><u>Sep-16</u></b>	<b><u>Oct-16</u></b>	<b><u>Nov-16</u></b>	<b><u>Dec-16</u></b>	<b><u>Jan-17</u></b>
64%	64%	65%	64%	64%	65%	64%	64%	64%	63%
17%	17%	16%	16%	16%	15%	16%	16%	16%	17%
12%	12%	12%	12%	13%	13%	12%	12%	13%	12%

<b>Feb-17</b>	<b>Mar-17</b>
12,624	13,820
44,877	49,192
8,555	10,029
71,443	78,517

<b><u>Feb-17</u></b>	<b><u>Mar-17</u></b>
63%	63%
18%	18%
12%	13%

Start with tab 20 to tab 23 to update these

On tab 21 be sure to update formula in OOS days on row 64 and update formulas in the % of OOS box

go to next to last tab "data for % private days" and copy formula over one more month

update graph on tab 24-Trend % by Payor

update tabs 12 to 19 (edit the horizontal axis first for best result)

Tab 11 will update automatically within a state fiscal year but must be changed to a new year of data to show last twelve months for comparison. Do this around October when there is enough new data. - c

Tab 6 will update automatically within a state fiscal year but must be changed to a new year. Do this around October of each new fiscal year when there will enough data to show a change. data is from tab

Update tab 2 references to data file, change month name at top and on the tab

Work back from tab 2 to tab 10. On tab 7, update starting from column c and going down to the total line

Then do tab 1 update. When adding a column for the new month copy info all the way down to days in the month over to the new column. The days in the month is at line 89 as of

5/16/15 but this line will change if there are more bed changes.

Go back to tab 2 to make sure that there is no difference between the total occupancy on that tab and the comparison column with data from tab 1, formulas will need to be changed in col. N on tab 2

data is from  
21-Monthly