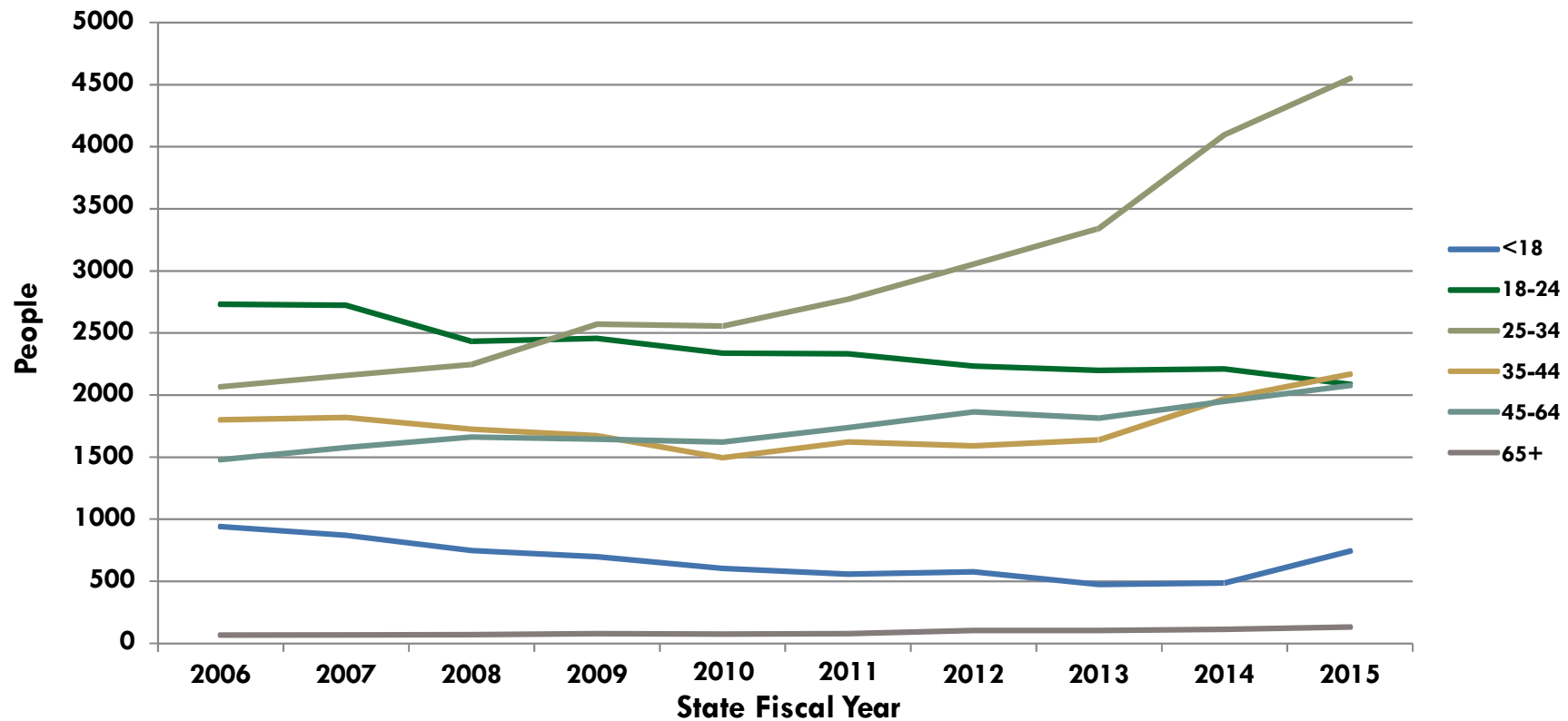


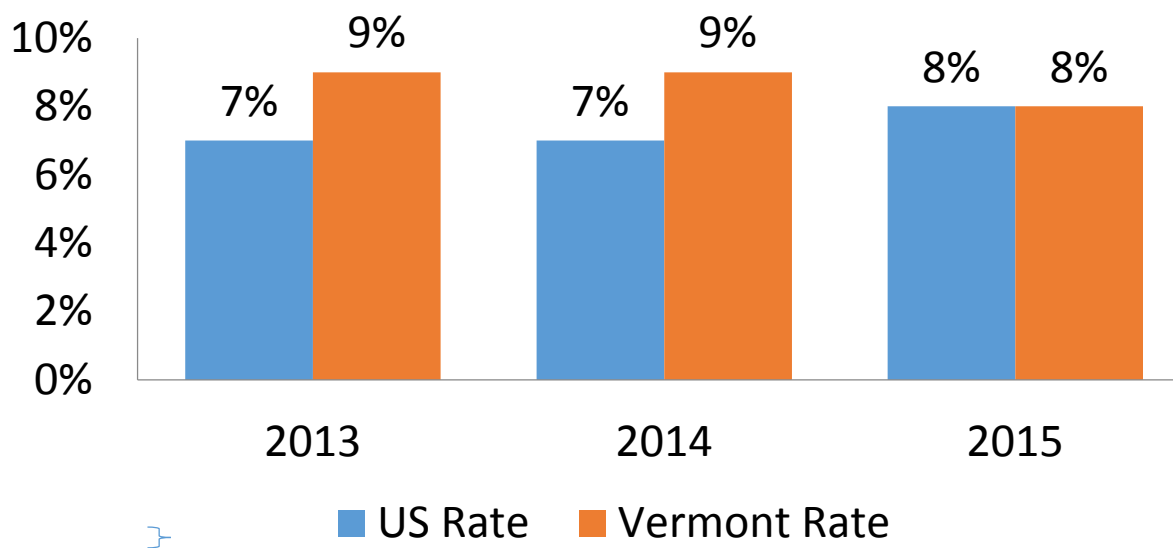
People Treated for Substance Abuse by Age and Fiscal Year



Age Category	2006	2007	2008	2009	2010	2011	2012	2013	2014	2015
<18	941	870	748	697	604	557	576	474	485	743
18-24	2731	2722	2432	2456	2337	2332	2233	2198	2210	2087
25-34	2067	2159	2246	2570	2555	2772	3054	3341	4095	4548
35-44	1799	1818	1724	1672	1495	1621	1590	1638	1968	2167
45-64	1480	1578	1663	1645	1622	1739	1865	1815	1950	2078
65+	67	68	70	78	75	78	104	104	114	132

Data Source: Vermont Substance Abuse Treatment Information System (SATIS). This reflects only people receiving treatment at state-funded treatment facilities.

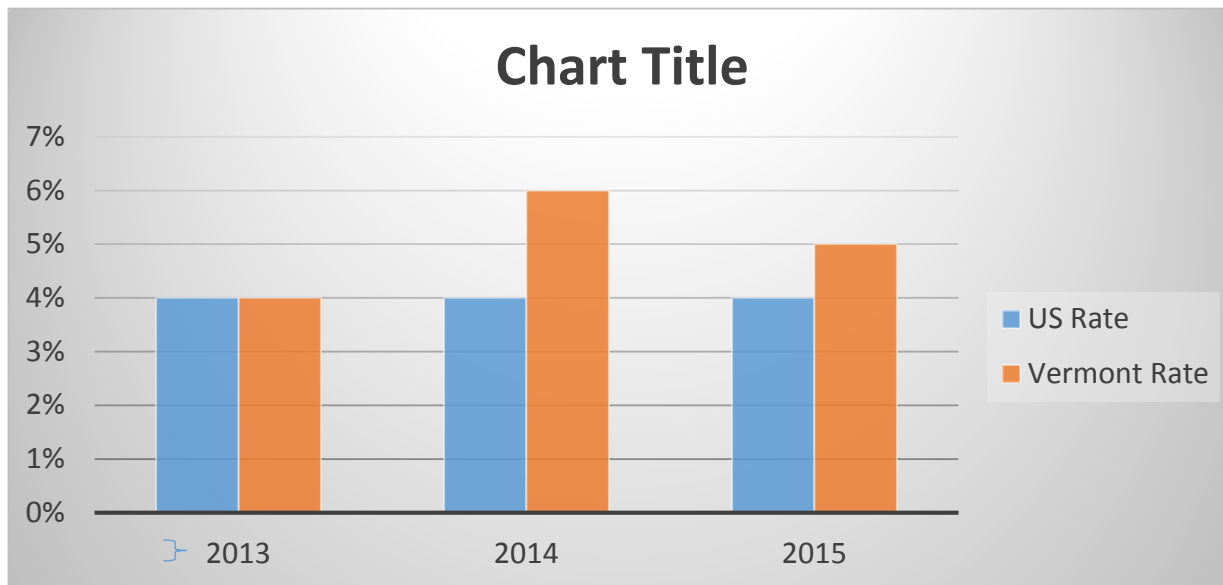
Percent of Older Adults (age 65 or older) Reporting Binge Drinking



AMOUNT OF SUBSTANCE USE AMONG VERMONT OLDER ADULTS

older men: 4 or more drinks on one occasion in last month
older women: 3 or more drinks on one occasion in last month

Percent of Older Adults (age 65 or older) Reporting Chronic Drinking



AMOUNT OF SUBSTANCE USE AMONG VERMONT OLDER ADULTS

* men: more than 60 drinks in a month and women: more than 30 drinks in a month